

Converting Colors

HunterLab(11.1322, 2.2693,
4.8714)

Have a look what the booklet for
HunterLab(11.1322, 2.2693, 4.8714)
contains.

HunterLab(11.1322, 2.2693, 4.8714)	3
<i>Conversions</i>	4
<i>Details</i>	6
<i>Harmonies</i>	12
<i>Previews</i>	24
<i>Color Blindness Simulation</i>	28
<i>CSS Examples</i>	31

Color

**HunterLab(11.1322, 2.2693,
4.8714)**

Conversions

Conversions Part 1

Format	Color
Hex	291A0D
RGB	41, 26, 13
RGB Percent	16%, 10%, 5%
CMY	0.8392, 0.8980, 0.9490
CMYK	0.00, 0.37, 0.68, 0.84
HSL	28°, 52%, 11%
HSV	28°, 68%, 16%
XYZ	1.3565, 1.2393, 0.5485
YIQ	29.0030, 13.1130, -0.8630

Conversions

Conversions Part 2

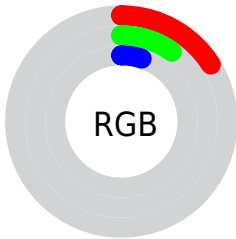
Format	Color
RYB	41, 37, 13
Decimal	2693645
CIELab	10.84, 5.57, 10.85
CIElCh	11, 12.200, 62.811
Yxy	1.2393, 0.4314, 0.3941
Android (android.graphics.Color)	4280883725 (0xFF291A0D)
YUV	29.0030, -7.8895, 10.5214
Hunter-Lab	11.1322, 2.2693, 4.8714

Details

The HunterLab color **11.1322, 2.2693, 4.8714** is a dark color, and the websafe version is hex **333333**. A complement of this color would be **10.3736, -1.2659, -5.6200**, and the grayscale version is **11.1063, -0.5926, 0.6034**.

A 20% lighter version of the original color is **25.6281, 2.3207, 7.1770**, and 0.0000, NaN, NaN is the 20% darker color. If you saturate the color by 10%, you get **10.6592, 2.8793, 5.1969**, and if you desaturate by 10%, it is **11.6280, 1.7004, 4.4699**.

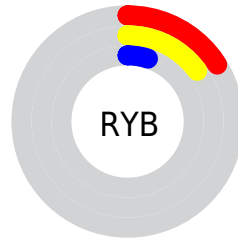
Distribution



Red (16%)

Green (10%)

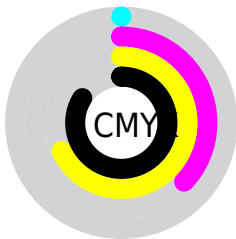
Blue (5%)



Red (16%)

Yellow (15%)

Blue (5%)

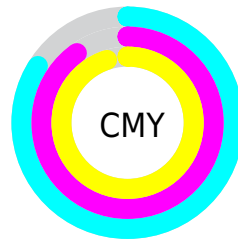


Cyan (0%)

Magenta (37%)

Yellow (68%)

Black (84%)



Cyan (84%)

Magenta (90%)

Yellow (95%)

Brightness & Saturation Gradients

These gradients show how the HunterLab color 11.1322, 2.2693, 4.8714 changes by changing the brightness by 10 percent. The first figure shows a shift by +10% for each color and the second figure -10%.

Similar to the brightness gradients but the following saturation gradients show a change of the HunterLab color 11.1322, 2.2693, 4.8714 by changing the saturation by 10% instead.

■ 11.1322, 2.2693,
4.8714

■ 11.1322, 2.2693,
4.8714

■ 101.0938, 0.3588,
15.4914

■ 3.0573, 7.7817,
2.1401

■ 25.6625, 2.3358,
7.2176

0.0000, NaN, NaN

0.0000, NaN, NaN

■ 34.3039, 2.2311,
8.4389

0.0000, NaN, NaN

■ 43.7431, 2.0550,
9.6305

0.0000, NaN, NaN

■ 53.9176, 1.8169,
10.8063

0.0000, NaN, NaN

0.0000, NaN, NaN

■ 64.7776, 1.5235,
11.9753

0.0000, NaN, NaN


■ 76.2824, 1.1800,


0.0000, NaN, NaN


13.1433

 88.3975, 0.7907,
14.3144

 11.1322, 2.2693,
4.8714


 11.1322, 2.2693,
4.8714

 10.6592, 2.8793,
5.1969


 11.6280, 1.7004,
4.4699


 10.2025, 3.4944,
5.5469


 12.1446, 1.1756,
3.9927

 9.7611, 4.0981,
5.9643

 12.6807, 0.6932,
3.4459

 9.6873, 4.1998,
6.0428

 13.2349, 0.2518,
2.8354

 13.8061, -0.1509,
2.1667

■ 14.3930, -0.5171,
1.4447

■ 14.9946, -0.8489,
0.6742

■ 15.6098, -1.1487,
-0.1407

■ 16.2379, -1.4187,
-0.9961

Harmonies

Analogous

The Analogous color harmony consists of three colors that are next to each other on the color wheel.



11.1325, 4.8845, 3.2924



11.1322, 2.2693, 4.8714



11.1325, -0.8861, 5.3680

Triad

The Triadic color harmony groups three colors that are evenly spaced from another and form a triangle on the color wheel.



11.1325, 2.2688, 4.8715



11.1325, -5.9553, 0.3236



11.1325, 2.8311, -5.3067

Complementary

The Complementary color scheme is a pair of colors which are on the opposite of each other on the color wheel.



11.1322, 2.2693, 4.8714



10.3736, -1.2659, -5.6200

Split Complementary

Split-complementary colors differ from the complementary color scheme. The scheme consists of three colors, the original color and two neighbors of the complement color.



11.1325, -0.3001, -6.6958



11.1322, 2.2693, 4.8714



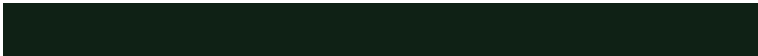
11.1325, -5.1839, -2.9343

Square

The Square scheme is like the rectangle color scheme, but the four colors are evenly spaced on the color wheel.



11.1325, 2.2688, 4.8715



11.1325, -5.4259, 2.9065



11.1325, -3.1949, -5.7270



11.1325, 5.2334, -2.3161

Rectangle

The Rectangle color scheme consists of four colors that form a rectangle on the color wheel.



11.1322, 2.2693, 4.8714



11.1325, -2.8174, 5.0182



11.1325, -3.1949, -5.7270



11.1325, 1.8175, -6.0085

Sweetspot

The Sweet Spot groups the original color and five complimentary colors.



11.1325, 2.2688, 4.8715



17.4464, -0.0447, 3.0347



9.1926, 8.6279, -1.4332



9.8723, -0.0195, 1.7287



57.4755, -3.0668, 3.1228



10.7914, -0.5758, 0.5863

Same Dimension

The Same Dimension uses a secret algorithm to generate beautiful new colors.



11.1325, 2.2688, 4.8715



13.1262, 4.4316, 6.9157



14.1110, -2.7793, 7.0466



8.2099, -0.3012, 0.8085



18.2965, 10.8833, 11.4648



47.6783, 34.2849, 29.9793

Inverse Universe

The Inverse Universe completely reimagines the original color for something new.



10.3736, -1.2659, -5.6200



11.9205, -1.0304, -9.7570



7.5539, 3.9999, -11.7409



8.1563, -0.5582, 0.0683



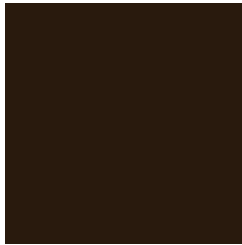
15.8904, 0.8074, -21.6046



40.7795, 6.4908, -64.9825

Previews

White Background



This preview shows how the HunterLab color 11.1322, 2.2693, 4.8714 looks on a white background.

Color Contrast Check

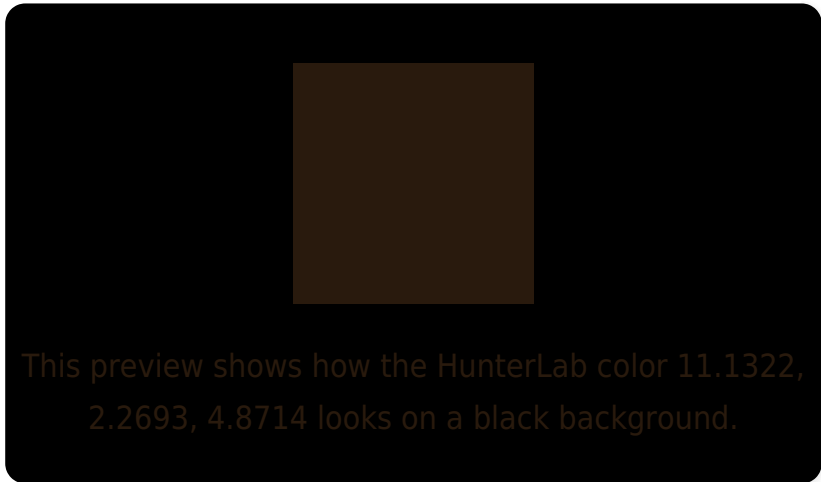
Large Text (above 18pt) WCAG AA ✓ Pass

Any Text WCAG AA ✓ Pass

Large Text (above 18pt) WCAG AAA ✓ Pass

Any Text WCAG AAA ✓ Pass

Black Background



Color Contrast Check

Large Text (above 18pt) WCAG AA × Fail

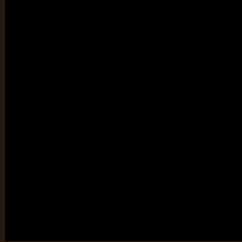
Any Text WCAG AA × Fail

Large Text (above 18pt) WCAG AAA × Fail

Any Text WCAG AAA × Fail

If you want to check with other color combinations, try the [Color Contrast Checker](#).

HunterLab 11.1322, 2.2693, 4.8714 Background



This preview shows how black text looks on a background with the HunterLab color 11.1322, 2.2693, 4.8714.



This preview shows how white text looks on a background with the HunterLab color 11.1322, 2.2693,

4.8714.

Color Blindness Simulation

Color vision deficiency is a very complex topic, and I could not describe the different causes any better than Wikipedia does, so if you want to learn more, you should check out their [article about color blindness](#).

Dichromacy



Original Color

11.1322, 2.2693, 4.8714

Protanopia

11.3295, -1.3814, 4.7828

Deuteranopia

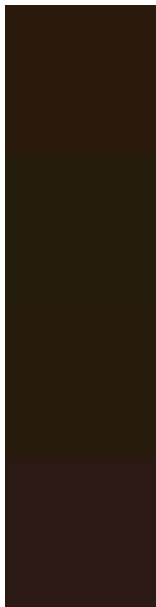
11.1820, 0.2987, 5.0512



Tritanopia

11.2342, 3.9975, 1.8348

Trichromacy



Original Color

11.1322, 2.2693, 4.8714

Protanomaly

11.3380, -0.2222, 4.8099

Deuteranomaly

11.0566, 0.9543, 4.9645

Tritanomaly

11.1429, 3.5328, 3.1531

Monochromacy



Original Color

11.1322, 2.2693, 4.8714

Achromatopsia

11.0844, -0.5914, 0.6022

Achromatomaly

11.0259, 0.0849, 2.4367

CSS Examples

Text

The CSS property to change the color of the text to HunterLab 11.1322, 2.2693, 4.8714 is called "color". The color property can be set on classes, ids or directly on the HTML element.

This example shows how text in the color `rgb(41, 26, 13)` looks like.

```
.text, #text, p{  
    color:rgb(41, 26, 13)  
}
```

If you want to add a text shadow in that color use the text-shadow property, you can generate a text shadow directly with our [CSS Text Shadow Generator](#).

Here you see how black text with a 4 pixel rgb(41, 26, 13) colored shadow looks like.

```
.shadow{ text-shadow: 4px 4px 2px rgb(41, 26, 13) }
```

Border

The CSS property to change the border of an element to HunterLab 11.1322, 2.2693, 4.8714 is called "border". The border property can be set on classes, ids or directly on the HTML element.

This example shows the color as border, it can be applied via the CSS property "border" or "border-color".

```
.border, #border, table{ border:4px solid rgb(41, 26, 13) }
```


If only the border color should be changed use the property border-color.

```
.border{ border-color:rgb(41, 26, 13) }
```

If you want to add a box shadow in that color use:

Here you see how a box with a 4 pixel rgb(41, 26, 13) colored shadow looks like.

```
.boxshadow{ -moz-box-shadow:4px 4px 4px  
4px rgb(41, 26, 13); -webkit-box-  
shadow:4px 4px 4px 4px rgb(41, 26, 13);  
box-shadow:4px 4px 4px 4px rgb(41, 26, 13)  
}
```

Background

The CSS property to change the background color of an element to HunterLab 11.1322, 2.2693, 4.8714 is called "background". The background property can be set on classes, ids or directly on the HTML element.

```
.background, #background, body{  
background: rgb(41, 26, 13) }
```

If only the background color should be changed can be used:

```
.background{ background-color: rgb(41, 26,  
13) }
```

This example shows the color as background, it is applied via the CSS property "background".

To optimize and compress your CSS code, you can use our [online CSS compressor and optimizer](#) based on csstidy. If you want to create a linear or radial gradient as background or border, check our [CSS Gradient Generator](#).

Hey! You found this booklet interesting? Support Converting Colors with the new Membership Option!

The pro membership hides all ads, plus gives you double the colors in the color bucket, and more awesome pro features!

[Learn more, Memberships starting at \\$2.50/m!](#)

**Follow me
on Twitter!**

@ConvertingColor