

Converting Colors

HunterLab(11.2797, 8.2741,
2.9744)

Have a look what the booklet for
HunterLab(11.2797, 8.2741, 2.9744)
contains.

HunterLab(11.2341, 8.3087, 3.0618)	3
<i>Conversions</i>	4
<i>Details</i>	6
<i>Harmonies</i>	12
<i>Previews</i>	24
<i>Color Blindness Simulation</i>	28
<i>CSS Examples</i>	31

Color

**HunterLab(11.2341, 8.3087,
3.0618)**

Conversions

Conversions Part 1

Format	Color
Hex	331416
RGB	51, 20, 22
RGB Percent	20%, 8%, 9%
CMY	0.8000, 0.9216, 0.9137
CMYK	0.00, 0.61, 0.57, 0.80
HSL	356°, 44%, 14%
HSV	356°, 61%, 20%
XYZ	1.7602, 1.2621, 0.9099
YIQ	29.4970, 17.8340, 7.1940

Conversions

Conversions Part 2

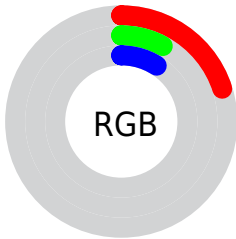
Format	Color
R_{YB}	51, 20, 22
Decimal	3347478
CIE _{Lab}	11.01, 15.87, 5.96
CIE _{LCh}	11, 16.957, 20.594
Yxy	1.2621, 0.4476, 0.3210
Android (android.graphics.Color)	4281537558 (0xFF331416)
YUV	29.4970, -3.6960, 18.8581
Hunter-Lab	11.2341, 8.3087, 3.0618

Details

The HunterLab color **11.2341, 8.3087, 3.0618** is a dark color, and the websafe version is hex **330000**. A complement of this color would be **16.5474, -7.0948, -0.3398**, and the grayscale version is **11.2458, -0.6000, 0.6110**.

A 20% lighter version of the original color is **25.6473, 9.7414, 4.7612**, and 0.0000, NaN, NaN is the 20% darker color. If you saturate the color by 10%, you get **10.4110, 9.8592, 3.5139**, and if you desaturate by 10%, it is **12.1717, 6.7135, 2.6341**.

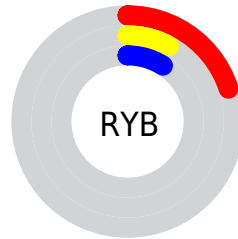
Distribution



 Red (20%)

 Green (8%)

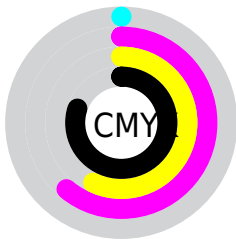
 Blue (9%)



 Red (20%)

 Yellow (8%)

 Blue (9%)

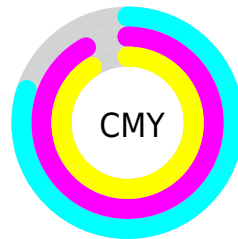



 Cyan (0%)

 Magenta (61%)

 Yellow (57%)

 Black (80%)



 Cyan (80%)

 Magenta (92%)

 Yellow (91%)

Brightness & Saturation Gradients

These gradients show how the HunterLab color 11.2341, 8.3087, 3.0618 changes by changing the brightness by 10 percent. The first figure shows a shift by +10% for each color and the second figure -10%.

Similar to the brightness gradients but the following saturation gradients show a change of the HunterLab color 11.2341, 8.3087, 3.0618 by changing the saturation by 10% instead.

■ 11.2341, 8.3087,
3.0618

■ 11.2341, 8.3087,
3.0618

■ 101.3062, 11.3333,
11.1452

■ 3.3404, 20.5278,
2.3383

■ 25.7970, 9.7350,
4.8170

0.0000, NaN, NaN

0.0000, NaN, NaN

■ 34.4521, 10.2347,
5.6835

0.0000, NaN, NaN

■ 43.9038, 10.6230,
6.5568

0.0000, NaN, NaN

■ 54.0899, 10.9158,
7.4419

0.0000, NaN, NaN

0.0000, NaN, NaN

■ 64.9608, 11.1250,
8.3418

0.0000, NaN, NaN

■ 76.4758, 11.2596,

0.0000, NaN, NaN

9.2584

■ 88.6006, 11.3271,
10.1926

■ 11.2341, 8.3087,
3.0618

■ 11.2341, 8.3087,
3.0618

■ 10.4110, 9.8592,
3.5139

■ 12.1717, 6.7135,
2.6341

■ 9.7174, 11.2985,
3.9726

■ 13.2077, 5.1216,
2.2391

■ 9.0704, 12.8270,
4.3709

■ 14.3284, 3.5591,
1.8804

■ 8.4322, 14.5258,
4.7863

■ 15.5220, 2.0389,
1.5573

■ 16.7787, 0.5657,
1.2675

■ 18.0902, -0.8613,
1.0077

■ 19.4500, -2.2452,
0.7743

■ 20.8524, -3.5904,
0.5641

■ 22.2930, -4.9015,
0.3741

Harmonies

Analogous

The Analogous color harmony consists of three colors that are next to each other on the color wheel.



11.2344, 8.8542, -0.7619



11.2341, 8.3087, 3.0618



11.2344, 5.1912, 5.6955

Triad

The Triadic color harmony groups three colors that are evenly spaced from another and form a triangle on the color wheel.



11.2344, 8.3080, 3.0620



11.2344, -6.3384, 4.8330



11.2344, -1.9291, -10.3493

Complementary

The Complementary color scheme is a pair of colors which are on the opposite of each other on the color wheel.



11.2341, 8.3087, 3.0618



16.5474, -7.0948, -0.3398

Split Complementary

Split-complementary colors differ from the complementary color scheme. The scheme consists of three colors, the original color and two neighbors of the complement color.



11.2344, -5.4135, -7.3944



11.2341, 8.3087, 3.0618



11.2344, -7.7451, 1.8308

Square

The Square scheme is like the rectangle color scheme, but the four colors are evenly spaced on the color wheel.



11.2344, 8.3080, 3.0620



11.2344, -3.3821, 6.7180



11.2344, -7.4132, -2.5475



11.2344, 2.4822, -9.6206

Rectangle

The Rectangle color scheme consists of four colors that form a rectangle on the color wheel.



11.2341, 8.3087, 3.0618



11.2344, 2.3034, 6.7624



11.2344, -7.4132, -2.5475



11.2344, -3.2356, -9.7219

Sweetspot

The Sweet Spot groups the original color and five complimentary colors.



11.2344, 8.3080, 3.0620



20.2938, 2.2739, 1.9351



11.7928, 11.3175, -8.2816



10.6505, 1.2785, 1.0375



59.5560, -3.1778, 3.2358



12.3795, -0.6605, 0.6726

Same Dimension

The Same Dimension uses a secret algorithm to generate beautiful new colors.



11.2344, 8.3080, 3.0620



12.8543, 13.8498, 4.8861



13.6613, 2.8459, 5.5952



9.4139, 0.1083, 0.6594



14.6589, 25.1899, 8.8055



38.3993, 65.8424, 24.1741

Inverse Universe

The Inverse Universe completely reimagines the original color for something new.



11.2344, 8.3080, 3.0620



12.8543, 13.8498, 4.8861



13.2155, -1.9829, -5.9427



9.4139, 0.1083, 0.6594



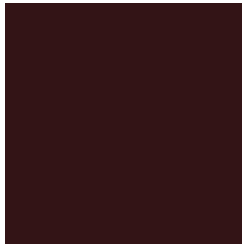
14.6589, 25.1899, 8.8055



38.3993, 65.8424, 24.1741

Previews

White Background



This preview shows how the HunterLab color 11.2341, 8.3087, 3.0618 looks on a white background.

Color Contrast Check

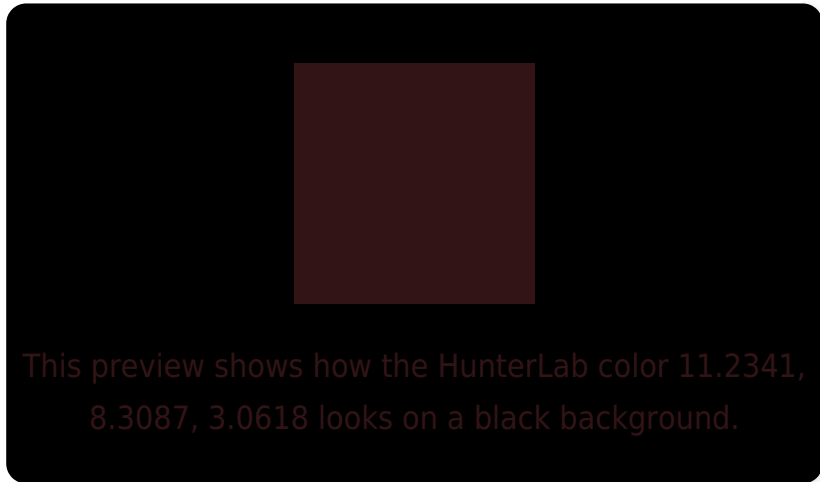
Large Text (above 18pt) WCAG AA ✓ Pass

Any Text WCAG AA ✓ Pass

Large Text (above 18pt) WCAG AAA ✓ Pass

Any Text WCAG AAA ✓ Pass

Black Background



Color Contrast Check

Large Text (above 18pt) WCAG AA × Fail

Any Text WCAG AA × Fail

Large Text (above 18pt) WCAG AAA × Fail

Any Text WCAG AAA × Fail

If you want to check with other color combinations, try the [Color Contrast Checker](#).

HunterLab 11.2341, 8.3087, 3.0618 Background



This preview shows how black text looks on a background with the HunterLab color 11.2341, 8.3087, 3.0618.

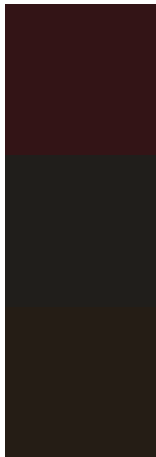


This preview shows how white text looks on a background with the HunterLab color 11.2341, 8.3087,

Color Blindness Simulation

Color vision deficiency is a very complex topic, and I could not describe the different causes any better than Wikipedia does, so if you want to learn more, you should check out their [article about color blindness](#).

Dichromacy



Original Color

11.2341, 8.3087, 3.0618

Protanopia

11.4663, -0.4858, 1.6953

Deuteranopia

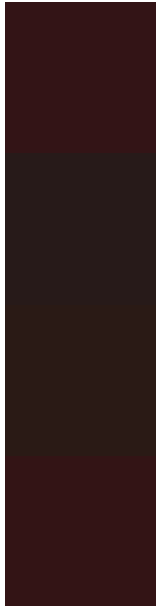
11.5160, 0.5811, 3.4536



Tritanopia

11.2172, 8.2296, 3.3061

Trichromacy



Original Color

11.2341, 8.3087, 3.0618

Protanomaly

11.1369, 2.6537, 2.0127

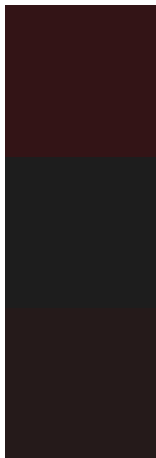
Deuteranomaly

11.3365, 3.1432, 3.3301

Tritanomaly

11.2172, 8.2296, 3.3061

Monochromacy



Original Color

11.2341, 8.3087, 3.0618

Achromatopsia

11.0844, -0.5914, 0.6022

Achromatomaly

10.9849, 2.2062, 1.5327

CSS Examples

Text

The CSS property to change the color of the text to HunterLab 11.2341, 8.3087, 3.0618 is called "color". The color property can be set on classes, ids or directly on the HTML element.

This example shows how text in the color `rgb(51, 20, 22)` looks like.

```
.text, #text, p{  
    color:rgb(51, 20, 22)  
}
```

If you want to add a text shadow in that color use the text-shadow property, you can generate a text shadow directly with our [CSS Text Shadow Generator](#).

Here you see how black text with a 4 pixel rgb(51, 20, 22) colored shadow looks like.

```
.shadow{ text-shadow: 4px 4px 2px rgb(51, 20, 22) }
```

Border

The CSS property to change the border of an element to HunterLab 11.2341, 8.3087, 3.0618 is called "border".

The border property can be set on classes, ids or directly on the HTML element.

This example shows the color as border, it can be applied via the CSS property "border" or "border-color".

```
.border, #border, table{ border:4px solid rgb(51, 20, 22) }
```


If only the border color should be changed use the property `border-color`.

```
.border{ border-color:rgb(51, 20, 22) }
```

If you want to add a box shadow in that color use:

Here you see how a box with a 4 pixel `rgb(51, 20, 22)` colored shadow looks like.

```
.boxshadow{ -moz-box-shadow:4px 4px 4px  
4px rgb(51, 20, 22); -webkit-box-  
shadow:4px 4px 4px 4px rgb(51, 20, 22);  
box-shadow:4px 4px 4px 4px rgb(51, 20, 22)  
}
```

Background

The CSS property to change the background color of an element to HunterLab 11.2341, 8.3087, 3.0618 is called "background". The background property can be set on classes, ids or directly on the HTML element.

```
.background, #background, body{  
background: rgb(51, 20, 22) }
```

If only the background color should be changed can be used:

```
.background{ background-color: rgb(51, 20,  
22) }
```

This example shows the color as background, it is applied via the CSS property "background".

To optimize and compress your CSS code, you can use our [online CSS compressor and optimizer](#) based on csstidy. If you want to create a linear or radial gradient as background or border, check our [CSS Gradient Generator](#).

Hey! You found this booklet interesting? Support Converting Colors with the new Membership Option!

The pro membership hides all ads, plus gives you double the colors in the color bucket, and more awesome pro features!

[Learn more, Memberships starting at \\$2.50/m!](#)

**Follow me
on Twitter!**

@ConvertingColor