

Converting Colors

HunterLab(11.4873, 7.0665,
3.0660)

Have a look what the booklet for
HunterLab(11.4873, 7.0665, 3.0660)
contains.

HunterLab(11.4621, 7.3026, 2.9977)	3
<i>Conversions</i>	4
<i>Details</i>	6
<i>Harmonies</i>	12
<i>Previews</i>	24
<i>Color Blindness Simulation</i>	28
<i>CSS Examples</i>	31

Color

**HunterLab(11.4621, 7.3026,
2.9977)**

Conversions

Conversions Part 1

Format	Color
Hex	321617
RGB	50, 22, 23
RGB Percent	20%, 9%, 9%
CMY	0.8039, 0.9137, 0.9098
CMYK	0.00, 0.56, 0.54, 0.80
HSL	358°, 39%, 14%
HSV	358°, 56%, 20%
XYZ	1.7570, 1.3138, 0.9716
YIQ	30.4860, 16.3670, 6.2470

Conversions

Conversions Part 2

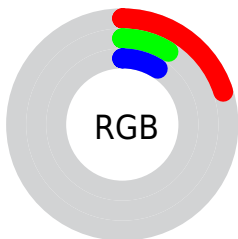
Format	Color
R_{YB}	50, 22, 23
Decimal	3282455
CIE Lab	11.37, 14.22, 5.71
CIE LCh	11, 15.325, 21.875
Yxy	1.3139, 0.4346, 0.3250
Android (android.graphics.Color)	4281472535 (0xFF321617)
YUV	30.4860, -3.6906, 17.1138
Hunter-Lab	11.4621, 7.3026, 2.9977

Details

The HunterLab color **11.4621, 7.3026, 2.9977** is a dark color, and the websafe version is hex **330000**. A complement of this color would be **16.3510, -6.4977, -0.5754**, and the grayscale version is **11.5532, -0.6165, 0.6277**.

A 20% lighter version of the original color is **25.9979, 8.6171, 4.7655**, and 0.0000, NaN, NaN is the 20% darker color. If you saturate the color by 10%, you get **10.5987, 8.8456, 3.4414**, and if you desaturate by 10%, it is **12.4300, 5.7454, 2.5728**.

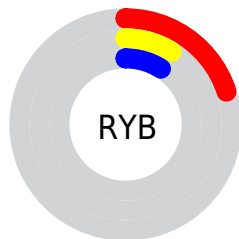
Distribution



 Red (20%)

 Green (9%)

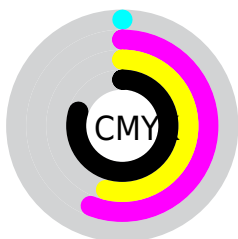
 Blue (9%)




 Red (20%)

 Yellow (9%)

 Blue (9%)

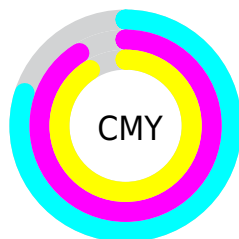



 Cyan (0%)

 Magenta (56%)

 Yellow (54%)

 Black (80%)



 Cyan (80%)

 Magenta (91%)

 Yellow (91%)

Brightness & Saturation Gradients

These gradients show how the HunterLab color 11.4621, 7.3026, 2.9977 changes by changing the brightness by 10 percent. The first figure shows a shift by +10% for each color and the second figure -10%.

Similar to the brightness gradients but the following saturation gradients show a change of the HunterLab color 11.4621, 7.3026, 2.9977 by changing the saturation by 10% instead.

■ 11.4621, 7.3026,
2.9977

■ 11.4621, 7.3026,
2.9977

■ 101.7795, 9.5394,
10.9464

■ 3.8974, 15.6922,
2.7282

■ 26.0974, 8.5169,
4.7126

0.0000, NaN, NaN

0.0000, NaN, NaN

■ 34.7828, 8.9202,
5.5616

0.0000, NaN, NaN

■ 44.2622, 9.2179,
6.4193

0.0000, NaN, NaN

■ 54.4740, 9.4252,
7.2903

0.0000, NaN, NaN

0.0000, NaN, NaN

■ 65.3691, 9.5532,
8.1772

0.0000, NaN, NaN

■ 76.9068, 9.6106,

0.0000, NaN, NaN

9.0816

■ 89.0533, 9.6041,
10.0045

■ 11.4621, 7.3026,
2.9977

■ 11.4621, 7.3026,
2.9977

■ 10.5987, 8.8456,
3.4414

■ 12.4300, 5.7454,
2.5728

■ 9.8544, 10.3214,
3.8887

■ 13.4872, 4.2102,
2.1737

■ 9.2131, 11.7407,
4.3053

■ 14.6215, 2.7144,
1.8036

■ 8.5423, 13.4167,
4.7585

■ 15.8222, 1.2656,
1.4620

■ 8.2584, 14.1901,
4.9697

■ 17.0804, -0.1351,
1.1473

■ 18.3891, -1.4903,
0.8568

■ 19.7421, -2.8039,
0.5878

■ 21.1346, -4.0806,
0.3377

■ 22.5625, -5.3253,
0.1040

Harmonies

Analogous

The Analogous color harmony consists of three colors that are next to each other on the color wheel.



11.4624, 7.8957, -0.4424



11.4621, 7.3026, 2.9977



11.4624, 4.4515, 5.2928

Triad

The Triadic color harmony groups three colors that are evenly spaced from another and form a triangle on the color wheel.



11.4624, 7.3019, 2.9979



11.4624, -5.9852, 4.3547



11.4624, -1.6637, -9.0524

Complementary

The Complementary color scheme is a pair of colors which are on the opposite of each other on the color wheel.



11.4621, 7.3026, 2.9977



16.3510, -6.4977, -0.5754

Split Complementary

Split-complementary colors differ from the complementary color scheme. The scheme consists of three colors, the original color and two neighbors of the complement color.



11.4624, -4.9256, -6.6189



11.4621, 7.3026, 2.9977



11.4624, -7.1923, 1.5967

Square

The Square scheme is like the rectangle color scheme, but the four colors are evenly spaced on the color wheel.



11.4624, 7.3019, 2.9979



11.4624, -3.3012, 6.0761



11.4624, -6.8310, -2.4000



11.4624, 2.3500, -8.2842

Rectangle

The Rectangle color scheme consists of four colors that form a rectangle on the color wheel.



11.4621, 7.3026, 2.9977



11.4624, 1.8418, 6.2002



11.4624, -6.8310, -2.4000



11.4624, -2.8757, -8.5589

Sweetspot

The Sweet Spot groups the original color and five complimentary colors.



11.4624, 7.3019, 2.9979



19.6969, 1.9317, 1.9235



12.0302, 10.2561, -7.2796



10.7975, 1.0754, 1.0592



59.5560, -3.1778, 3.2358



12.3795, -0.6605, 0.6726

Same Dimension

The Same Dimension uses a secret algorithm to generate beautiful new colors.



11.4624, 7.3019, 2.9979



12.9594, 11.9936, 4.5917



13.8375, 2.2235, 5.3128



9.4123, 0.0998, 0.6818



14.6397, 25.1186, 9.0906



38.3802, 65.7713, 24.4583

Inverse Universe

The Inverse Universe completely reimagines the original color for something new.



11.4624, 7.3019, 2.9979



12.9594, 11.9936, 4.5917



13.2254, -1.8093, -5.4104



9.4123, 0.0998, 0.6818



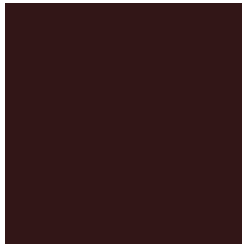
14.6397, 25.1186, 9.0906



38.3802, 65.7713, 24.4583

Previews

White Background



This preview shows how the HunterLab color 11.4621, 7.3026, 2.9977 looks on a white background.

Color Contrast Check

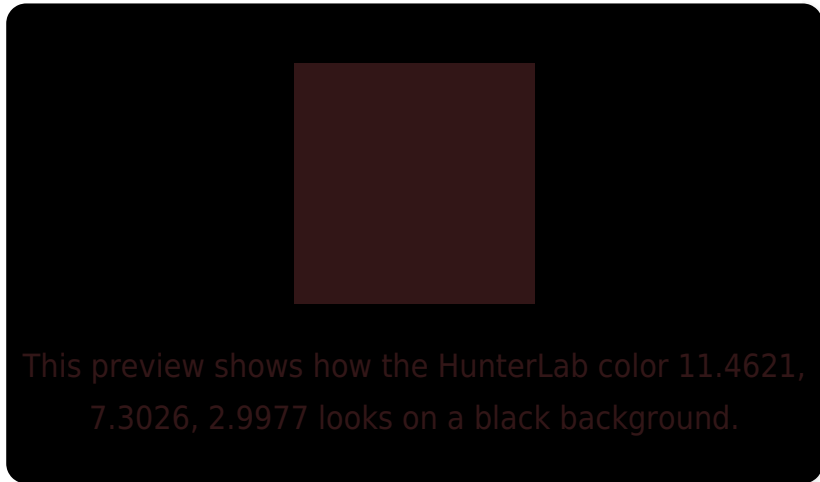
Large Text (above 18pt) WCAG AA ✓ Pass

Any Text WCAG AA ✓ Pass

Large Text (above 18pt) WCAG AAA ✓ Pass

Any Text WCAG AAA ✓ Pass

Black Background



Color Contrast Check

Large Text (above 18pt) WCAG AA × Fail

Any Text WCAG AA × Fail

Large Text (above 18pt) WCAG AAA × Fail

Any Text WCAG AAA × Fail

If you want to check with other color combinations, try the [Color Contrast Checker](#).

HunterLab 11.4621, 7.3026, 2.9977 Background



This preview shows how black text looks on a background with the HunterLab color 11.4621, 7.3026, 2.9977.



This preview shows how white text looks on a background with the HunterLab color 11.4621, 7.3026,

Color Blindness Simulation

Color vision deficiency is a very complex topic, and I could not describe the different causes any better than Wikipedia does, so if you want to learn more, you should check out their [article about color blindness](#).

Dichromacy



Original Color

11.4621, 7.3026, 2.9977

Protanopia

11.7577, -0.6121, 2.0056

Deuteranopia

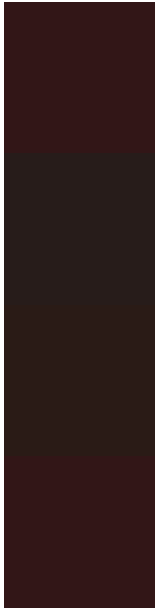
11.7464, 0.2934, 3.4119



Tritanopia

11.4621, 7.3026, 2.9977

Trichromacy



Original Color

11.4621, 7.3026, 2.9977

Protanomaly

11.5604, 1.9793, 2.1459

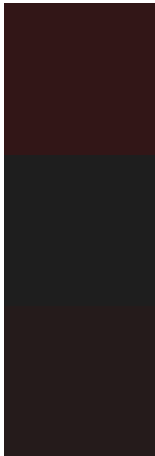
Deuteranomaly

11.5500, 2.8393, 3.2703

Tritanomaly

11.4621, 7.3026, 2.9977

Monochromacy



Original Color

11.4621, 7.3026, 2.9977

Achromatopsia

11.3943, -0.6080, 0.6191

Achromatomaly

11.2085, 1.9275, 1.4554

CSS Examples

Text

The CSS property to change the color of the text to HunterLab 11.4621, 7.3026, 2.9977 is called "color". The color property can be set on classes, ids or directly on the HTML element.

This example shows how text in the color `rgb(50, 22, 23)` looks like.

```
.text, #text, p{  
    color:rgb(50, 22, 23)  
}
```

If you want to add a text shadow in that color use the text-shadow property, you can generate a text shadow directly with our [CSS Text Shadow Generator](#).

Here you see how black text with a 4 pixel rgb(50, 22, 23) colored shadow looks like.

```
.shadow{ text-shadow: 4px 4px 2px rgb(50, 22, 23) }
```

Border

The CSS property to change the border of an element to HunterLab 11.4621, 7.3026, 2.9977 is called "border". The border property can be set on classes, ids or directly on the HTML element.

This example shows the color as border, it can be applied via the CSS property "border" or "border-color".

```
.border, #border, table{ border:4px solid rgb(50, 22, 23) }
```


If only the border color should be changed use the property `border-color`.

```
.border{ border-color:rgb(50, 22, 23) }
```

If you want to add a box shadow in that color use:

Here you see how a box with a 4 pixel `rgb(50, 22, 23)` colored shadow looks like.

```
.boxshadow{ -moz-box-shadow:4px 4px 4px  
4px rgb(50, 22, 23); -webkit-box-  
shadow:4px 4px 4px 4px rgb(50, 22, 23);  
box-shadow:4px 4px 4px 4px rgb(50, 22, 23)  
}
```

Background

The CSS property to change the background color of an element to HunterLab 11.4621, 7.3026, 2.9977 is called "background". The background property can be set on classes, ids or directly on the HTML element.

```
.background, #background, body{  
background: rgb(50, 22, 23) }
```

If only the background color should be changed can be used:

```
.background{ background-color: rgb(50, 22,  
23) }
```

This example shows the color as background, it is applied via the CSS property "background".

To optimize and compress your CSS code, you can use our [online CSS compressor and optimizer](#) based on csstidy. If you want to create a linear or radial gradient as background or border, check our [CSS Gradient Generator](#).

Hey! You found this booklet interesting? Support Converting Colors with the new Membership Option!

The pro membership hides all ads, plus gives you double the colors in the color bucket, and more awesome pro features!

[Learn more, Memberships starting at \\$2.50/m!](#)

**Follow me
on Twitter!**

@ConvertingColor