

Converting Colors

HunterLab(11.7762, 4.4106,
4.4537)

Have a look what the booklet for
HunterLab(11.7762, 4.4106, 4.4537)
contains.

HunterLab(11.7762, 4.4148, 4.4526)	3
<i>Conversions</i>	4
<i>Details</i>	6
<i>Harmonies</i>	12
<i>Previews</i>	24
<i>Color Blindness Simulation</i>	28
<i>CSS Examples</i>	31

Color

**HunterLab(11.7762, 4.4148,
4.4526)**

Conversions

Conversions Part 1

Format	Color
Hex	2F1A12
RGB	47, 26, 18
RGB Percent	18%, 10%, 7%
CMY	0.8157, 0.8980, 0.9294
CMYK	0.00, 0.45, 0.62, 0.82
HSL	17°, 45%, 13%
HSV	17°, 62%, 18%
XYZ	1.6509, 1.3868, 0.7529
YIQ	31.3670, 15.0840, 1.9640

Conversions

Conversions Part 2

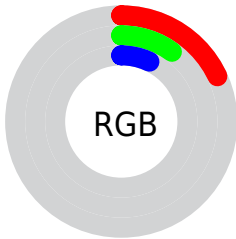
Format	Color
R_{YB}	47, 29, 18
Decimal	3086866
CIE Lab	11.87, 9.36, 9.70
CIE LCh	12, 13.476, 46.011
Yxy	1.3869, 0.4355, 0.3659
Android (android.graphics.Color)	4281276946 (0xFF2F1A12)
YUV	31.3670, -6.5899, 13.7101
Hunter-Lab	11.7762, 4.4148, 4.4526

Details

The HunterLab color **11.7762, 4.4148, 4.4526** is a dark color, and the websafe version is hex **333333**. A complement of this color would be **13.3595, -3.4975, -3.7644**, and the grayscale version is **11.8370, -0.6316, 0.6431**.

A 20% lighter version of the original color is **26.3859, 4.9666, 6.7399**, and 0.0000, NaN, NaN is the 20% darker color. If you saturate the color by 10%, you get **11.0956, 5.4435, 4.8431**, and if you desaturate by 10%, it is **12.5048, 3.4296, 3.9963**.

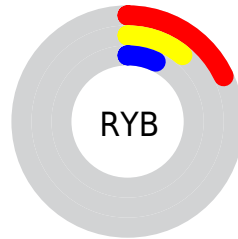
Distribution



Red (18%)

Green (10%)

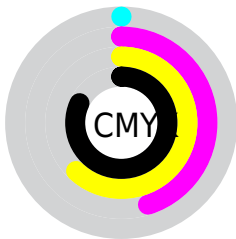
Blue (7%)



Red (18%)

Yellow (11%)

Blue (7%)

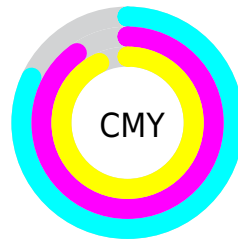


Cyan (0%)

Magenta (45%)

Yellow (62%)

Black (82%)



Cyan (82%)

Magenta (90%)

Yellow (93%)

Brightness & Saturation Gradients

These gradients show how the HunterLab color 11.7762, 4.4148, 4.4526 changes by changing the brightness by 10 percent. The first figure shows a shift by +10% for each color and the second figure -10%.

Similar to the brightness gradients but the following saturation gradients show a change of the HunterLab color 11.7762, 4.4148, 4.4526 by changing the saturation by 10% instead.

■ 11.7762, 4.4148,
4.4526

■ 11.7762, 4.4148,
4.4526

■ 102.4277, 4.3110,
14.5952

■ 4.5498, 8.7206,
3.1849

■ 26.5098, 4.9862,
6.7935

0.0000, NaN, NaN

0.0000, NaN, NaN

■ 35.2364, 5.1029,
7.9259

0.0000, NaN, NaN

■ 44.7537, 5.1328,
9.0390

0.0000, NaN, NaN

■ 55.0006, 5.0880,
10.1441

0.0000, NaN, NaN

0.0000, NaN, NaN

■ 65.9285, 4.9773,
11.2483

0.0000, NaN, NaN

■ 77.4973, 4.8075,

0.0000, NaN, NaN

12.3563

■ 89.6734, 4.5840,
13.4712

■ 11.7762, 4.4148,
4.4526

■ 11.7762, 4.4148,
4.4526

■ 11.0956, 5.4435,
4.8431

■ 12.5048, 3.4296,
3.9963

■ 10.4669, 6.5062,
5.1646

■ 13.2756, 2.4937,
3.4840

■ 9.8860, 7.5421,
5.5521

■ 14.0845, 1.6071,
2.9245

■ 9.4412, 8.3550,
5.9639

■ 14.9277, 0.7685,
2.3253

■ 15.8018, -0.0247,
1.6926

■ 16.7038, -0.7757,
1.0312

■ 17.6313, -1.4880,
0.3451

■ 18.5820, -2.1651,
-0.3624

■ 19.5540, -2.8102,
-1.0887

Harmonies

Analogous

The Analogous color harmony consists of three colors that are next to each other on the color wheel.



11.7765, 6.5561, 2.2724



11.7762, 4.4148, 4.4526



11.7765, 1.0408, 5.6427

Triad

The Triadic color harmony groups three colors that are evenly spaced from another and form a triangle on the color wheel.



11.7765, 4.4142, 4.4528



11.7765, -6.4691, 2.0847



11.7765, 1.2837, -7.3134

Complementary

The Complementary color scheme is a pair of colors which are on the opposite of each other on the color wheel.



11.7762, 4.4148, 4.4526



13.3595, -3.4975, -3.7644

Split Complementary

Split-complementary colors differ from the complementary color scheme. The scheme consists of three colors, the original color and two neighbors of the complement color.



11.7765, -2.2107, -7.4078



11.7762, 4.4148, 4.4526



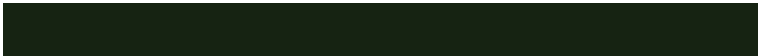
11.7765, -6.4203, -1.2633

Square

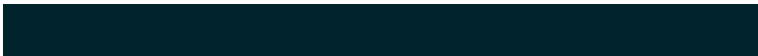
The Square scheme is like the rectangle color scheme, but the four colors are evenly spaced on the color wheel.



11.7765, 4.4142, 4.4528



11.7765, -5.0868, 4.3344



11.7765, -4.9445, -4.9520



11.7765, 4.6097, -4.7227

Rectangle

The Rectangle color scheme consists of four colors that form a rectangle on the color wheel.



11.7762, 4.4148, 4.4526



11.7765, -1.3249, 5.7573



11.7765, -4.9445, -4.9520



11.7765, 0.0835, -7.6592

Sweetspot

The Sweet Spot groups the original color and five complimentary colors.



11.7765, 4.4142, 4.4528



19.3683, 0.8175, 2.8590



10.8867, 9.7929, -3.7003



10.3261, 0.4595, 1.5452



58.5142, -3.1222, 3.1792



11.5809, -0.6179, 0.6292

Same Dimension

The Same Dimension uses a secret algorithm to generate beautiful new colors.



11.7765, 4.4142, 4.4528



13.7316, 7.8782, 6.4975



14.7694, -1.0931, 6.7844



8.8398, -0.1661, 0.7974



16.3152, 17.7006, 10.3633



41.7906, 52.2679, 26.6662

Inverse Universe

The Inverse Universe completely reimagines the original color for something new.



13.3595, -3.4975, -3.7644



16.1878, -4.6664, -6.3806



10.0953, 1.8747, -9.5408



8.9630, -0.7656, 0.1647



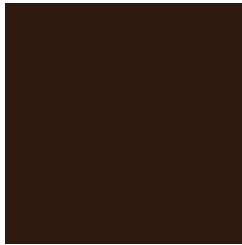
20.5274, -5.7199, -13.3097



53.2363, -13.0238, -38.4260

Previews

White Background



This preview shows how the HunterLab color 11.7762, 4.4148, 4.4526 looks on a white background.

Color Contrast Check

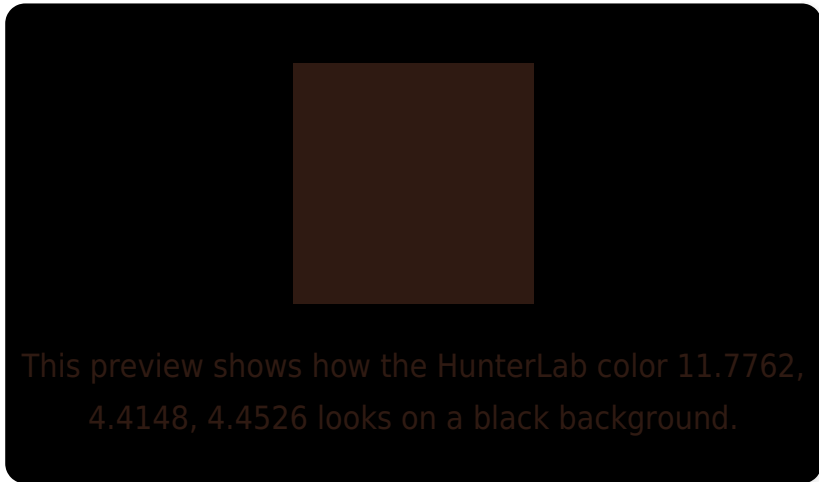
Large Text (above 18pt) WCAG AA ✓ Pass

Any Text WCAG AA ✓ Pass

Large Text (above 18pt) WCAG AAA ✓ Pass

Any Text WCAG AAA ✓ Pass

Black Background



Color Contrast Check

Large Text (above 18pt) WCAG AA × Fail

Any Text WCAG AA × Fail

Large Text (above 18pt) WCAG AAA × Fail

Any Text WCAG AAA × Fail

If you want to check with other color combinations, try the [Color Contrast Checker](#).

HunterLab 11.7762, 4.4148, 4.4526 Background



This preview shows how black text looks on a background with the HunterLab color 11.7762, 4.4148, 4.4526.



This preview shows how white text looks on a background with the HunterLab color 11.7762, 4.4148,

Color Blindness Simulation

Color vision deficiency is a very complex topic, and I could not describe the different causes any better than Wikipedia does, so if you want to learn more, you should check out their [article about color blindness](#).

Dichromacy



Original Color

11.7762, 4.4148, 4.4526

Protanopia

12.0036, -1.1404, 4.1076

Deuteranopia

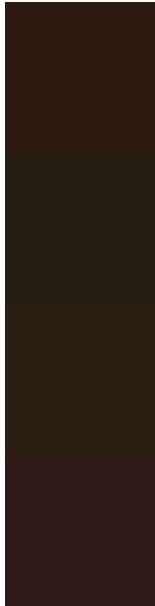
11.8336, 0.4413, 4.6425



Tritanopia

11.8439, 5.8644, 2.2101

Trichromacy



Original Color

11.7762, 4.4148, 4.4526

Protanomaly

11.8613, 0.5900, 4.2396

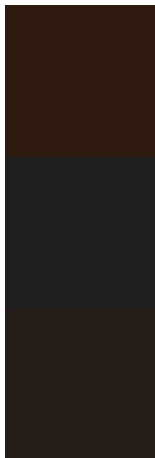
Deuteranomaly

11.8804, 1.6771, 4.7034

Tritanomaly

11.7881, 5.5888, 3.0152

Monochromacy



Original Color

11.7762, 4.4148, 4.4526

Achromatopsia

11.7056, -0.6246, 0.6360

Achromatomaly

11.6044, 1.0544, 2.1759

CSS Examples

Text

The CSS property to change the color of the text to HunterLab 11.7762, 4.4148, 4.4526 is called "color". The color property can be set on classes, ids or directly on the HTML element.

This example shows how text in the color `rgb(47, 26, 18)` looks like.

```
.text, #text, p{  
    color:rgb(47, 26, 18)  
}
```

If you want to add a text shadow in that color use the text-shadow property, you can generate a text shadow directly with our [CSS Text Shadow Generator](#).

Here you see how black text with a 4 pixel rgb(47, 26, 18) colored shadow looks like.

```
.shadow{ text-shadow: 4px 4px 2px rgb(47, 26, 18) }
```

Border

The CSS property to change the border of an element to HunterLab 11.7762, 4.4148, 4.4526 is called "border". The border property can be set on classes, ids or directly on the HTML element.

This example shows the color as border, it can be applied via the CSS property "border" or "border-color".

```
.border, #border, table{ border:4px solid rgb(47, 26, 18) }
```


If only the border color should be changed use the property `border-color`.

```
.border{ border-color:rgb(47, 26, 18) }
```

If you want to add a box shadow in that color use:

Here you see how a box with a 4 pixel `rgb(47, 26, 18)` colored shadow looks like.

```
.boxshadow{ -moz-box-shadow:4px 4px 4px  
4px rgb(47, 26, 18); -webkit-box-  
shadow:4px 4px 4px 4px rgb(47, 26, 18);  
box-shadow:4px 4px 4px 4px rgb(47, 26, 18)  
}
```

Background

The CSS property to change the background color of an element to HunterLab 11.7762, 4.4148, 4.4526 is called "background". The background property can be set on classes, ids or directly on the HTML element.

```
.background, #background, body{  
background: rgb(47, 26, 18) }
```

If only the background color should be changed can be used:

```
.background{ background-color: rgb(47, 26,  
18) }
```

This example shows the color as background, it is applied via the CSS property "background".

To optimize and compress your CSS code, you can use our [online CSS compressor and optimizer](#) based on csstidy. If you want to create a linear or radial gradient as background or border, check our [CSS Gradient Generator](#).

Hey! You found this booklet interesting? Support Converting Colors with the new Membership Option!

The pro membership hides all ads, plus gives you double the colors in the color bucket, and more awesome pro features!

[Learn more, Memberships starting at \\$2.50/m!](#)

**Follow me
on Twitter!**

@ConvertingColor