

Converting Colors

HunterLab(11.9082, 4.8701,
4.3466)

Have a look what the booklet for
HunterLab(11.9082, 4.8701, 4.3466)
contains.

HunterLab(11.8919, 4.7943, 4.3400)	3
<i>Conversions</i>	4
<i>Details</i>	6
<i>Harmonies</i>	12
<i>Previews</i>	24
<i>Color Blindness Simulation</i>	28
<i>CSS Examples</i>	31

Color

**HunterLab(11.8919, 4.7943,
4.3400)**

Conversions

Conversions Part 1

Format	Color
Hex	301A13
RGB	48, 26, 19
RGB Percent	19%, 10%, 7%
CMY	0.8118, 0.8980, 0.9255
CMYK	0.00, 0.46, 0.60, 0.81
HSL	14°, 43%, 13%
HSV	14°, 60%, 19%
XYZ	1.7058, 1.4142, 0.7991
YIQ	31.7800, 15.3590, 2.4870

Conversions

Conversions Part 2

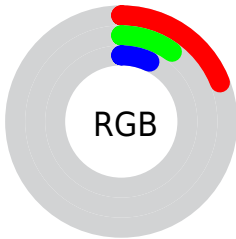
Format	Color
RYB	48, 28, 19
Decimal	3152403
CIELab	12.05, 10.00, 9.35
CIELCh	12, 13.686, 43.084
Yxy	1.4142, 0.4353, 0.3608
Android (android.graphics.Color)	4281342483 (0xFF301A13)
YUV	31.7800, -6.3005, 14.2249
Hunter-Lab	11.8919, 4.7943, 4.3400

Details

The HunterLab color **11.8919, 4.7943, 4.3400** is a dark color, and the websafe version is hex **330000**. A complement of this color would be **13.9198, -3.9070, -3.4015**, and the grayscale version is **11.9653, -0.6384, 0.6501**.

A 20% lighter version of the original color is **26.6082, 5.7234, 6.6585**, and 0.0000, NaN, NaN is the 20% darker color. If you saturate the color by 10%, you get **11.1728, 5.9040, 4.7453**, and if you desaturate by 10%, it is **12.6651, 3.7263, 3.8748**.

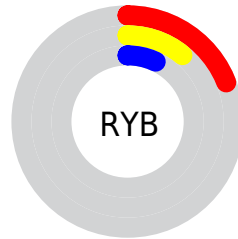
Distribution



Red (19%)

Green (10%)

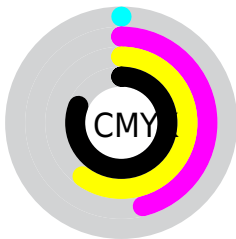
Blue (7%)



Red (19%)

Yellow (11%)

Blue (7%)

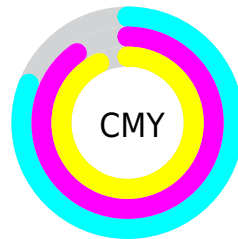


Cyan (0%)

Magenta (46%)

Yellow (60%)

Black (81%)



Cyan (81%)

Magenta (90%)

Yellow (93%)

Brightness & Saturation Gradients

These gradients show how the HunterLab color 11.8919, 4.7943, 4.3400 changes by changing the brightness by 10 percent. The first figure shows a shift by +10% for each color and the second figure -10%.

Similar to the brightness gradients but the following saturation gradients show a change of the HunterLab color 11.8919, 4.7943, 4.3400 by changing the saturation by 10% instead.

■ 11.8919, 4.7943,
4.3400

■ 11.8919, 4.7943,
4.3400

■ 102.6653, 4.9843,
14.3078

■ 4.7664, 8.8837,
3.3365

■ 26.6614, 5.4461,
6.6450

0.0000, NaN, NaN

0.0000, NaN, NaN

■ 35.4030, 5.5987,
7.7517

0.0000, NaN, NaN

■ 44.9341, 5.6622,
8.8419

0.0000, NaN, NaN

■ 55.1938, 5.6490,
9.9263

0.0000, NaN, NaN

0.0000, NaN, NaN

■ 66.1337, 5.5684,
11.0113

0.0000, NaN, NaN

■ 77.7139, 5.4272,

0.0000, NaN, NaN

12.1015

■ 89.9007, 5.2310,
13.1996

■ 11.8919, 4.7943,
4.3400

■ 11.8919, 4.7943,
4.3400

■ 11.1728, 5.9040,
4.7453

■ 12.6651, 3.7263,
3.8748

■ 10.5132, 7.0455,
5.0792

■ 13.4857, 2.7074,
3.3600

■ 9.9112, 8.1584,
5.4598

■ 14.3489, 1.7387,
2.8046

■ 9.3885, 9.1504,
5.9454

■ 15.2500, 0.8191,
2.2161

■ 16.1852, -0.0539,
1.6000

■ 17.1512, -0.8837,
0.9611

■ 18.1449, -1.6740,
0.3028

■ 19.1640, -2.4284,
-0.3721

■ 20.2061, -3.1507,
-1.0615

Harmonies

Analogous

The Analogous color harmony consists of three colors that are next to each other on the color wheel.



11.8922, 6.8009, 2.0302



11.8919, 4.7943, 4.3400



11.8922, 1.4247, 5.6457

Triad

The Triadic color harmony groups three colors that are evenly spaced from another and form a triangle on the color wheel.



11.8922, 4.7937, 4.3402



11.8922, -6.5057, 2.3918



11.8922, 0.9559, -7.6113

Complementary

The Complementary color scheme is a pair of colors which are on the opposite of each other on the color wheel.



11.8919, 4.7943, 4.3400



13.9198, -3.9070, -3.4015

Split Complementary

Split-complementary colors differ from the complementary color scheme. The scheme consists of three colors, the original color and two neighbors of the complement color.



11.8922, -2.5637, -7.4285



11.8919, 4.7943, 4.3400



11.8922, -6.5998, -0.9246

Square

The Square scheme is like the rectangle color scheme, but the four colors are evenly spaced on the color wheel.



11.8922, 4.7937, 4.3402



11.8922, -4.9625, 4.5657



11.8922, -5.2367, -4.7204



11.8922, 4.4158, -5.1641

Rectangle

The Rectangle color scheme consists of four colors that form a rectangle on the color wheel.



11.8919, 4.7943, 4.3400



11.8922, -1.0015, 5.8452



11.8922, -5.2367, -4.7204



11.8922, -0.2643, -7.8727

Sweetspot

The Sweet Spot groups the original color and five complimentary colors.



11.8922, 4.7937, 4.3402



19.3967, 0.8646, 2.6796



11.2065, 9.9533, -4.1325



10.3299, 0.4963, 1.4552



58.5142, -3.1222, 3.1792



11.5809, -0.6179, 0.6292

Same Dimension

The Same Dimension uses a secret algorithm to generate beautiful new colors.



11.8922, 4.7937, 4.3402



13.6352, 8.1980, 6.2152



14.8694, -0.7609, 6.6925



8.8232, -0.1379, 0.7789



15.9551, 18.7248, 10.1593



40.9350, 54.8430, 26.1841

Inverse Universe

The Inverse Universe completely reimagines the original color for something new.



13.9198, -3.9070, -3.4015



16.7004, -5.2189, -5.5748



10.5997, 1.4548, -9.0841



8.9801, -0.7935, 0.1850



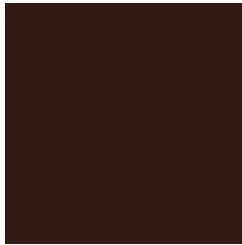
21.3369, -6.8649, -11.8499



55.5676, -16.3917, -34.0696

Previews

White Background



This preview shows how the HunterLab color 11.8919, 4.7943, 4.3400 looks on a white background.

Color Contrast Check

Large Text (above 18pt) WCAG AA ✓ Pass

Any Text WCAG AA ✓ Pass

Large Text (above 18pt) WCAG AAA ✓ Pass

Any Text WCAG AAA ✓ Pass

Black Background



Color Contrast Check

Large Text (above 18pt) WCAG AA × Fail

Any Text WCAG AA × Fail

Large Text (above 18pt) WCAG AAA × Fail

Any Text WCAG AAA × Fail

If you want to check with other color combinations, try the [Color Contrast Checker](#).

HunterLab 11.8919, 4.7943, 4.3400 Background



This preview shows how black text looks on a background with the HunterLab color 11.8919, 4.7943, 4.3400.



This preview shows how white text looks on a background with the HunterLab color 11.8919, 4.7943,

Color Blindness Simulation

Color vision deficiency is a very complex topic, and I could not describe the different causes any better than Wikipedia does, so if you want to learn more, you should check out their [article about color blindness](#).

Dichromacy



Original Color

11.8919, 4.7943, 4.3400

Protanopia

12.0187, -1.0569, 3.8875

Deuteranopia

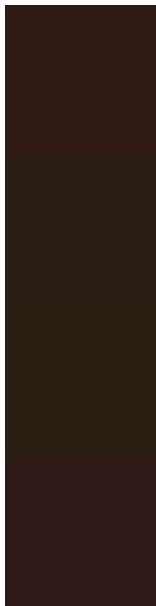
12.0623, 0.1394, 4.6223



Tritanopia

11.8439, 5.8644, 2.2101

Trichromacy



Original Color

11.8919, 4.7943, 4.3400

Protanomaly

11.9590, 0.9476, 4.1045

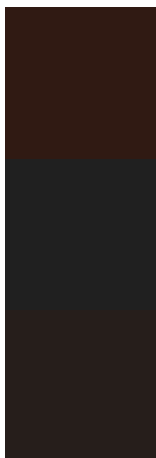
Deuteranomaly

11.8939, 1.7482, 4.5069

Tritanomaly

11.7881, 5.5888, 3.0152

Monochromacy



Original Color

11.8919, 4.7943, 4.3400

Achromatopsia

12.0183, -0.6413, 0.6530

Achromatomaly

11.9153, 1.0415, 2.2008

CSS Examples

Text

The CSS property to change the color of the text to HunterLab 11.8919, 4.7943, 4.3400 is called "color". The color property can be set on classes, ids or directly on the HTML element.

This example shows how text in the color `rgb(48, 26, 19)` looks like.

```
.text, #text, p{  
    color:rgb(48, 26, 19)  
}
```

If you want to add a text shadow in that color use the text-shadow property, you can generate a text shadow directly with our [CSS Text Shadow Generator](#).

Here you see how black text with a 4 pixel rgb(48, 26, 19) colored shadow looks like.

```
.shadow{ text-shadow: 4px 4px 2px rgb(48, 26, 19) }
```

Border

The CSS property to change the border of an element to HunterLab 11.8919, 4.7943, 4.3400 is called "border". The border property can be set on classes, ids or directly on the HTML element.

This example shows the color as border, it can be applied via the CSS property "border" or "border-color".

```
.border, #border, table{ border:4px solid rgb(48, 26, 19) }
```


If only the border color should be changed use the property `border-color`.

```
.border{ border-color:rgb(48, 26, 19) }
```

If you want to add a box shadow in that color use:

Here you see how a box with a 4 pixel `rgb(48, 26, 19)` colored shadow looks like.

```
.boxshadow{ -moz-box-shadow:4px 4px 4px  
4px rgb(48, 26, 19); -webkit-box-  
shadow:4px 4px 4px 4px rgb(48, 26, 19);  
box-shadow:4px 4px 4px 4px rgb(48, 26, 19)  
}
```

Background

The CSS property to change the background color of an element to HunterLab 11.8919, 4.7943, 4.3400 is called "background". The background property can be set on classes, ids or directly on the HTML element.

```
.background, #background, body{  
background: rgb(48, 26, 19) }
```

If only the background color should be changed can be used:

```
.background{ background-color: rgb(48, 26,  
19) }
```

This example shows the color as background, it is applied via the CSS property "background".

To optimize and compress your CSS code, you can use our [online CSS compressor and optimizer](#) based on csstidy. If you want to create a linear or radial gradient as background or border, check our [CSS Gradient Generator](#).

Hey! You found this booklet interesting? Support Converting Colors with the new Membership Option!

The pro membership hides all ads, plus gives you double the colors in the color bucket, and more awesome pro features!

[Learn more, Memberships starting at \\$2.50/m!](#)

**Follow me
on Twitter!**

@ConvertingColor