

Converting Colors

HunterLab(11.9364, 6.2207,
2.9485)

Have a look what the booklet for
HunterLab(11.9364, 6.2207, 2.9485)
contains.

HunterLab(12.0148, 6.2879, 2.9751)	3
<i>Conversions</i>	4
<i>Details</i>	6
<i>Harmonies</i>	12
<i>Previews</i>	24
<i>Color Blindness Simulation</i>	28
<i>CSS Examples</i>	31

Color

**HunterLab(12.0148, 6.2879,
2.9751)**

Conversions

Conversions Part 1

Format	Color
Hex	321919
RGB	50, 25, 25
RGB Percent	20%, 10%, 10%
CMY	0.8039, 0.9020, 0.9020
CMYK	0.00, 0.50, 0.50, 0.80
HSL	0°, 33%, 15%
HSV	0°, 50%, 20%
XYZ	1.8385, 1.4436, 1.1014
YIQ	32.4750, 14.9000, 5.3000

Conversions

Conversions Part 2

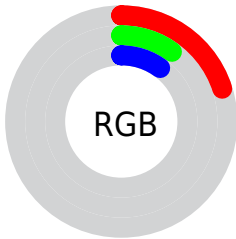
Format	Color
R_{YB}	50, 25, 25
Decimal	3283225
CIE _{Lab}	12.25, 12.47, 5.44
CIE _{LCh}	12, 13.609, 23.579
Yxy	1.4436, 0.4194, 0.3293
Android (android.graphics.Color)	4281473305 (0xFF321919)
YUV	32.4750, -3.6852, 15.3694
Hunter-Lab	12.0148, 6.2879, 2.9751

Details

The HunterLab color **12.0148, 6.2879, 2.9751** is a dark color, and the websafe version is hex **330000**. A complement of this color would be **16.4865, -5.9286, -0.7971**, and the grayscale version is **12.1754, -0.6496, 0.6615**.

A 20% lighter version of the original color is **26.9634, 7.1550, 4.7145**, and 0.0000, NaN, NaN is the 20% darker color. If you saturate the color by 10%, you get **11.0860, 7.8406, 3.4289**, and if you desaturate by 10%, it is **13.0402, 4.7489, 2.5337**.

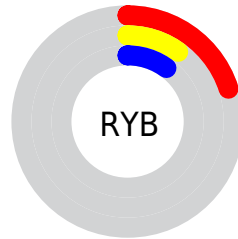
Distribution



Red (20%)

Green (10%)

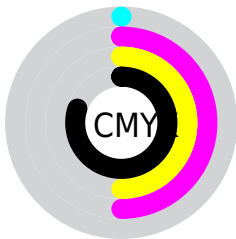
Blue (10%)



Red (20%)

Yellow (10%)

Blue (10%)

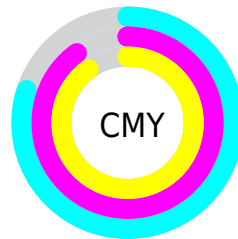


Cyan (0%)

Magenta (50%)

Yellow (50%)

Black (80%)



Cyan (80%)

Magenta (90%)

Yellow (90%)

Brightness & Saturation Gradients

These gradients show how the HunterLab color 12.0148, 6.2879, 2.9751 changes by changing the brightness by 10 percent. The first figure shows a shift by +10% for each color and the second figure -10%.

Similar to the brightness gradients but the following saturation gradients show a change of the HunterLab color 12.0148, 6.2879, 2.9751 by changing the saturation by 10% instead.

■ 12.0148, 6.2879,
2.9751

■ 12.0148, 6.2879,
2.9751

■ 102.9171, 7.6384,
10.7835

■ 4.9854, 10.6355,
3.4898

■ 26.8221, 7.2566,
4.6420

0.0000, NaN, NaN

0.0000, NaN, NaN

■ 35.5797, 7.5509,
5.4733

0.0000, NaN, NaN

■ 45.1253, 7.7472,
6.3155

0.0000, NaN, NaN

■ 55.3986, 7.8593,
7.1726

0.0000, NaN, NaN

0.0000, NaN, NaN

■ 66.3512, 7.8973,
8.0470

0.0000, NaN, NaN

■ 77.9434, 7.8692,

0.0000, NaN, NaN

8.9398

90.1416, 7.7812,
9.8519

12.0148, 6.2879,
2.9751

12.0148, 6.2879,
2.9751

11.0860, 7.8406,
3.4289

13.0402, 4.7489,
2.5337

10.2680, 9.3672,
3.8814

14.1477, 3.2487,
2.1108

9.5769, 10.8024,
4.3125

15.3262, 1.7974,
1.7094

8.9312, 12.2925,
4.7654

16.5661, 0.3974,
1.3296

8.2352, 14.1008,
5.3213

17.8595, -0.9530,
0.9703

■ 8.2351, 14.1008,
5.3213

■ 19.1997, -2.2579,
0.6296

■ 20.5816, -3.5222,
0.3056

■ 22.0006, -4.7510,
-0.0039

■ 23.4531, -5.9491,
-0.3007

Harmonies

Analogous

The Analogous color harmony consists of three colors that are next to each other on the color wheel.



12.0151, 6.9338, -0.0962



12.0148, 6.2879, 2.9751



12.0151, 3.6921, 4.9050

Triad

The Triadic color harmony groups three colors that are evenly spaced from another and form a triangle on the color wheel.



12.0151, 6.2872, 2.9753



12.0151, -5.6625, 3.9145



12.0151, -1.3967, -7.7687

Complementary

The Complementary color scheme is a pair of colors which are on the opposite of each other on the color wheel.



12.0148, 6.2879, 2.9751



16.4865, -5.9286, -0.7971

Split Complementary

Split-complementary colors differ from the complementary color scheme. The scheme consists of three colors, the original color and two neighbors of the complement color.



12.0151, -4.4369, -5.8436



12.0148, 6.2879, 2.9751



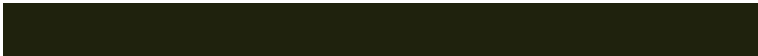
12.0151, -6.7082, 1.3587

Square

The Square scheme is like the rectangle color scheme, but the four colors are evenly spaced on the color wheel.



12.0151, 6.2872, 2.9753



12.0151, -3.2558, 5.4300



12.0151, -6.2870, -2.2489



12.0151, 2.2168, -6.9627

Rectangle

The Rectangle color scheme consists of four colors that form a rectangle on the color wheel.



12.0148, 6.2879, 2.9751



12.0151, 1.3524, 5.6305



12.0151, -6.2870, -2.2489



12.0151, -2.5138, -7.4050

Sweetspot

The Sweet Spot groups the original color and five complimentary colors.



12.0151, 6.2872, 2.9753



20.0140, 1.5097, 1.9515



12.6636, 9.3951, -6.1605



10.9458, 0.8727, 1.0830



59.5560, -3.1778, 3.2358



12.3795, -0.6605, 0.6726

Same Dimension

The Same Dimension uses a secret algorithm to generate beautiful new colors.



12.0151, 6.2872, 2.9753



13.6782, 10.4826, 4.5017



14.5009, 1.3117, 5.1979



9.4104, 0.0892, 0.7095



14.6163, 25.0287, 9.4447



38.3585, 65.6881, 24.7863

Inverse Universe

The Inverse Universe completely reimagines the original color for something new.



16.4865, -5.9286, -0.7971



20.5397, -8.5621, -1.3874



13.3844, -1.3662, -5.1438



9.8527, -1.0905, 0.3460



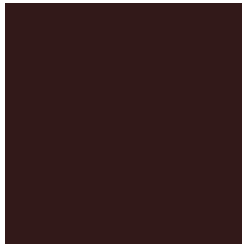
28.1265, -14.9102, -2.9687



73.8152, -39.1302, -7.7917

Previews

White Background



This preview shows how the HunterLab color 12.0148, 6.2879, 2.9751 looks on a white background.

Color Contrast Check

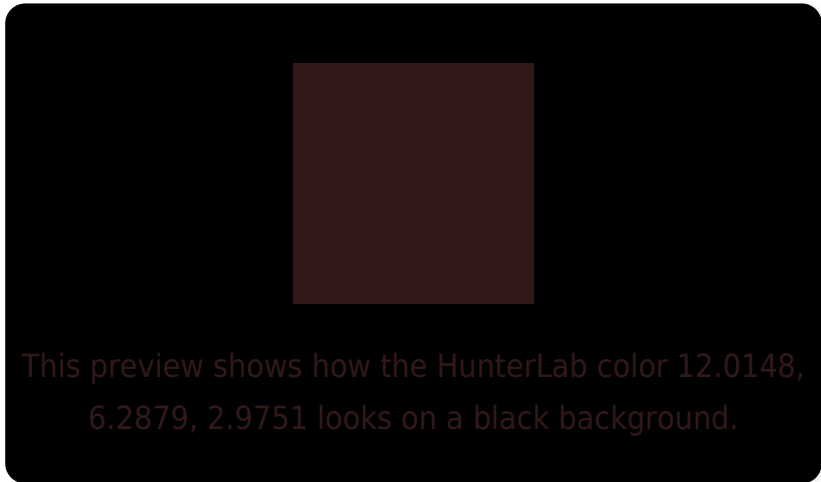
Large Text (above 18pt) WCAG AA ✓ Pass

Any Text WCAG AA ✓ Pass

Large Text (above 18pt) WCAG AAA ✓ Pass

Any Text WCAG AAA ✓ Pass

Black Background



Color Contrast Check

Large Text (above 18pt) WCAG AA × Fail

Any Text WCAG AA × Fail

Large Text (above 18pt) WCAG AAA × Fail

Any Text WCAG AAA × Fail

If you want to check with other color combinations, try the [Color Contrast Checker](#).

HunterLab 12.0148, 6.2879, 2.9751 Background



This preview shows how black text looks on a background with the HunterLab color 12.0148, 6.2879, 2.9751.

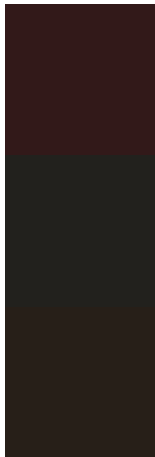


This preview shows how white text looks on a background with the HunterLab color 12.0148, 6.2879,

Color Blindness Simulation

Color vision deficiency is a very complex topic, and I could not describe the different causes any better than Wikipedia does, so if you want to learn more, you should check out their [article about color blindness](#).

Dichromacy



Original Color

12.0148, 6.2879, 2.9751

Protanopia

12.3146, -0.8908, 1.9762

Deuteranopia

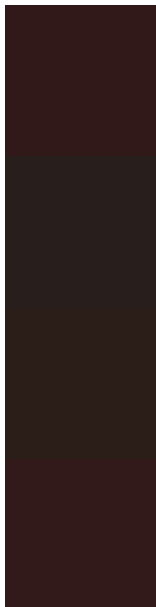
12.1542, 0.6354, 3.2851



Tritanopia

12.0520, 6.4698, 2.4385

Trichromacy



Original Color

12.0148, 6.2879, 2.9751

Protanomaly

12.0975, 1.6841, 2.0996

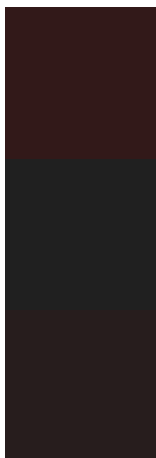
Deuteranomaly

12.0759, 2.5250, 3.2425

Tritanomaly

12.0331, 6.3774, 2.7111

Monochromacy



Original Color

12.0148, 6.2879, 2.9751

Achromatopsia

12.0183, -0.6413, 0.6530

Achromatomaly

11.8270, 1.9091, 1.4939

CSS Examples

Text

The CSS property to change the color of the text to HunterLab 12.0148, 6.2879, 2.9751 is called "color". The color property can be set on classes, ids or directly on the HTML element.

This example shows how text in the color `rgb(50, 25, 25)` looks like.

```
.text, #text, p{  
    color:rgb(50, 25, 25)  
}
```

If you want to add a text shadow in that color use the text-shadow property, you can generate a text shadow directly with our [CSS Text Shadow Generator](#).

Here you see how black text with a 4 pixel rgb(50, 25, 25) colored shadow looks like.

```
.shadow{ text-shadow: 4px 4px 2px rgb(50, 25, 25) }
```

Border

The CSS property to change the border of an element to HunterLab 12.0148, 6.2879, 2.9751 is called "border". The border property can be set on classes, ids or directly on the HTML element.

This example shows the color as border, it can be applied via the CSS property "border" or "border-color".

```
.border, #border, table{ border:4px solid rgb(50, 25, 25) }
```


If only the border color should be changed use the property `border-color`.

```
.border{ border-color:rgb(50, 25, 25) }
```

If you want to add a box shadow in that color use:

Here you see how a box with a 4 pixel `rgb(50, 25, 25)` colored shadow looks like.

```
.boxshadow{ -moz-box-shadow:4px 4px 4px  
4px rgb(50, 25, 25); -webkit-box-  
shadow:4px 4px 4px 4px rgb(50, 25, 25);  
box-shadow:4px 4px 4px 4px rgb(50, 25, 25)  
}
```

Background

The CSS property to change the background color of an element to HunterLab 12.0148, 6.2879, 2.9751 is called "background". The background property can be set on classes, ids or directly on the HTML element.

```
.background, #background, body{  
background: rgb(50, 25, 25) }
```

If only the background color should be changed can be used:

```
.background{ background-color: rgb(50, 25,  
25) }
```

This example shows the color as background, it is applied via the CSS property "background".

To optimize and compress your CSS code, you can use our [online CSS compressor and optimizer](#) based on csstidy. If you want to create a linear or radial gradient as background or border, check our [CSS Gradient Generator](#).

Hey! You found this booklet interesting? Support Converting Colors with the new Membership Option!

The pro membership hides all ads, plus gives you double the colors in the color bucket, and more awesome pro features!

[Learn more, Memberships starting at \\$2.50/m!](#)

**Follow me
on Twitter!**

@ConvertingColor