

Converting Colors

HunterLab(12.0839, 8.8568,
3.8410)

Have a look what the booklet for
HunterLab(12.0839, 8.8568, 3.8410)
contains.

HunterLab(12.0165, 8.7882, 3.8132)	3
<i>Conversions</i>	4
<i>Details</i>	6
<i>Harmonies</i>	12
<i>Previews</i>	24
<i>Color Blindness Simulation</i>	28
<i>CSS Examples</i>	31

Color

**HunterLab(12.0165, 8.7882,
3.8132)**

Conversions

Conversions Part 1

Format	Color
Hex	371616
RGB	55, 22, 22
RGB Percent	22%, 9%, 9%
CMY	0.7843, 0.9137, 0.9137
CMYK	0.00, 0.60, 0.60, 0.78
HSL	0°, 43%, 15%
HSV	0°, 60%, 22%
XYZ	2.0073, 1.4440, 0.9320
YIQ	31.8670, 19.6680, 6.9960

Conversions

Conversions Part 2

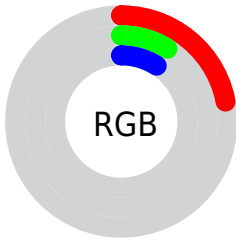
Format	Color
R_{YB}	55, 22, 22
Decimal	3610134
CIE _{Lab}	12.25, 16.45, 7.79
CIE _{LCh}	12, 18.199, 25.331
Yxy	1.4440, 0.4579, 0.3294
Android (android.graphics.Color)	4281800214 (0xFF371616)
YUV	31.8670, -4.8644, 20.2876
Hunter-Lab	12.0165, 8.7882, 3.8132

Details

The HunterLab color **12.0165, 8.7882, 3.8132** is a dark color, and the websafe version is hex **330000**. A complement of this color would be **17.8286, -7.3059, -1.1619**, and the grayscale version is **11.9873, -0.6396, 0.6513**.

A 20% lighter version of the original color is **26.8508, 10.0666, 6.0111**, and 0.0000, NaN, NaN is the 20% darker color. If you saturate the color by 10%, you get **11.1210, 10.4833, 4.3171**, and if you desaturate by 10%, it is **13.0413, 7.0535, 3.3062**.

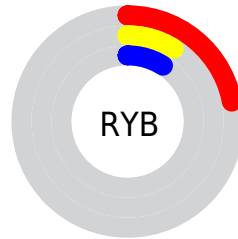
Distribution



 Red (22%)

 Green (9%)

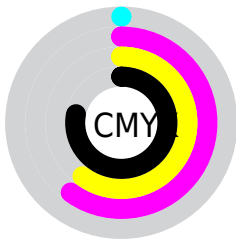
 Blue (9%)



 Red (22%)

 Yellow (9%)

 Blue (9%)

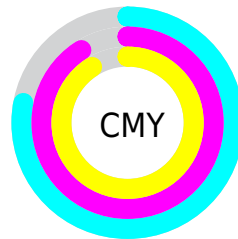


 Cyan (0%)

 Magenta (60%)

 Yellow (60%)

 Black (78%)



 Cyan (78%)

 Magenta (91%)

 Yellow (91%)

Brightness & Saturation Gradients

These gradients show how the HunterLab color 12.0165, 8.7882, 3.8132 changes by changing the brightness by 10 percent. The first figure shows a shift by +10% for each color and the second figure -10%.

Similar to the brightness gradients but the following saturation gradients show a change of the HunterLab color 12.0165, 8.7882, 3.8132 by changing the saturation by 10% instead.

■ 12.0165, 8.7882,
3.8132

■ 12.0165, 8.7882,
3.8132

■ 102.9206, 11.9598,
12.9277

■ 4.9884, 14.1019,
3.4919

■ 26.8243, 10.2426,
5.8818

0.0000, NaN, NaN

0.0000, NaN, NaN

■ 35.5821, 10.7589,
6.8761

0.0000, NaN, NaN

■ 45.1280, 11.1644,
7.8655

0.0000, NaN, NaN

■ 55.4014, 11.4746,
8.8576

0.0000, NaN, NaN

0.0000, NaN, NaN

■ 66.3542, 11.7010,
9.8574

0.0000, NaN, NaN

■ 77.9466, 11.8527,

0.0000, NaN, NaN

10.8677

90.1450, 11.9370,
11.8907

12.0165, 8.7882,
3.8132

12.0165, 8.7882,
3.8132

11.1210, 10.4833,
4.3171

13.0413, 7.0535,
3.3062

10.3720, 12.0632,
4.7925

14.1768, 5.3328,
2.8115

9.7146, 13.6003,
5.2602

15.4074, 3.6541,
2.3377

9.0127, 15.4325,
5.8237

16.7197, 2.0306,
1.8882

9.0127, 15.4326,
5.8238

18.1023, 0.4656,
1.4634

■ 19.5459, -1.0430,
1.0620

■ 21.0430, -2.4996,
0.6817

■ 22.5874, -3.9102,
0.3204

■ 24.1739, -5.2805,
-0.0245

Harmonies

Analogous

The Analogous color harmony consists of three colors that are next to each other on the color wheel.



12.0168, 9.8942, -0.0755



12.0165, 8.7882, 3.8132



12.0168, 5.0129, 6.2905

Triad

The Triadic color harmony groups three colors that are evenly spaced from another and form a triangle on the color wheel.



12.0168, 8.7874, 3.8134



12.0168, -7.2741, 4.6984



12.0168, -1.3769, -11.6419

Complementary

The Complementary color scheme is a pair of colors which are on the opposite of each other on the color wheel.



12.0165, 8.7882, 3.8132



17.8286, -7.3059, -1.1619

Split Complementary

Split-complementary colors differ from the complementary color scheme. The scheme consists of three colors, the original color and two neighbors of the complement color.



12.0168, -5.4123, -8.9213



12.0165, 8.7882, 3.8132



12.0168, -8.4633, 1.3406

Square

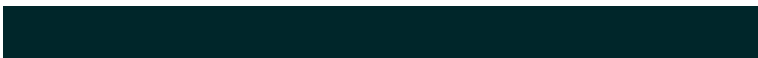
The Square scheme is like the rectangle color scheme, but the four colors are evenly spaced on the color wheel.



12.0168, 8.7874, 3.8134



12.0168, -4.3083, 6.8015



12.0168, -7.8386, -3.6931



12.0168, 3.5249, -10.1595

Rectangle

The Rectangle color scheme consists of four colors that form a rectangle on the color wheel.



12.0165, 8.7882, 3.8132



12.0168, 1.7619, 7.2005



12.0168, -7.8386, -3.6931



12.0168, -2.8703, -11.1662

Sweetspot

The Sweet Spot groups the original color and five complimentary colors.



12.0168, 8.7874, 3.8134



21.7890, 2.3927, 2.3757



12.8914, 12.7768, -8.4561



11.2962, 1.3509, 1.2687



60.6009, -3.2335, 3.2926



13.1868, -0.7036, 0.7165

Same Dimension

The Same Dimension uses a secret algorithm to generate beautiful new colors.



12.0168, 8.7874, 3.8134



13.8035, 14.6929, 5.9218



15.1280, 2.1932, 6.3853



10.1224, 0.1189, 0.7709



15.0504, 25.7723, 9.7252



38.8676, 66.5602, 25.1153

Inverse Universe

The Inverse Universe completely reimagines the original color for something new.



17.8286, -7.3059, -1.1619



22.7286, -10.5824, -1.9067



13.6558, -1.2887, -7.3007



10.6149, -1.1949, 0.3660



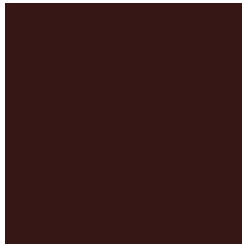
28.9620, -15.3532, -3.0568



74.7953, -39.6500, -7.8947

Previews

White Background



This preview shows how the HunterLab color 12.0165, 8.7882, 3.8132 looks on a white background.

Color Contrast Check

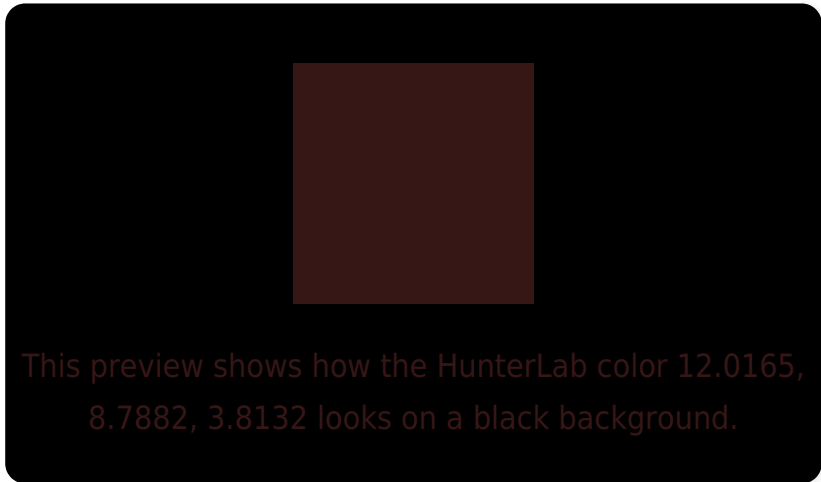
Large Text (above 18pt) WCAG AA ✓ Pass

Any Text WCAG AA ✓ Pass

Large Text (above 18pt) WCAG AAA ✓ Pass

Any Text WCAG AAA ✓ Pass

Black Background



Color Contrast Check

Large Text (above 18pt) WCAG AA × Fail

Any Text WCAG AA × Fail

Large Text (above 18pt) WCAG AAA × Fail

Any Text WCAG AAA × Fail

If you want to check with other color combinations, try the [Color Contrast Checker](#).

HunterLab 12.0165, 8.7882, 3.8132 Background



This preview shows how black text looks on a background with the HunterLab color 12.0165, 8.7882, 3.8132.



This preview shows how white text looks on a background with the HunterLab color 12.0165, 8.7882,

Color Blindness Simulation

Color vision deficiency is a very complex topic, and I could not describe the different causes any better than Wikipedia does, so if you want to learn more, you should check out their [article about color blindness](#).

Dichromacy



Original Color

12.0165, 8.7882, 3.8132

Protanopia

12.3457, -0.8597, 2.6126

Deuteranopia

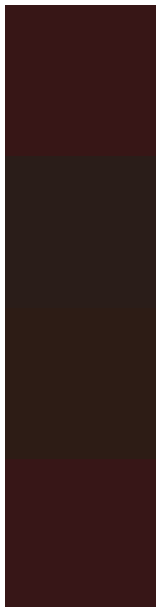
12.3881, 0.1916, 4.4693



Tritanopia

12.0329, 8.8650, 3.5757

Trichromacy



Original Color

12.0165, 8.7882, 3.8132

Protanomaly

12.0048, 2.3311, 2.8959

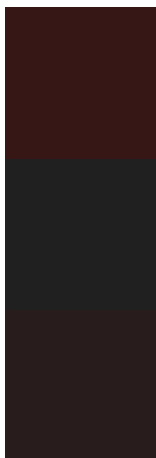
Deuteranomaly

12.0106, 3.2480, 3.9555

Tritanomaly

12.0329, 8.8650, 3.5757

Monochromacy



Original Color

12.0165, 8.7882, 3.8132

Achromatopsia

12.0183, -0.6413, 0.6530

Achromatomaly

11.6853, 2.4630, 1.6693

CSS Examples

Text

The CSS property to change the color of the text to HunterLab 12.0165, 8.7882, 3.8132 is called "color". The color property can be set on classes, ids or directly on the HTML element.

This example shows how text in the color `rgb(55, 22, 22)` looks like.

```
.text, #text, p{  
    color:rgb(55, 22, 22)  
}
```

If you want to add a text shadow in that color use the text-shadow property, you can generate a text shadow directly with our [CSS Text Shadow Generator](#).

Here you see how black text with a 4 pixel rgb(55, 22, 22) colored shadow looks like.

```
.shadow{ text-shadow: 4px 4px 2px rgb(55, 22, 22) }
```

Border

The CSS property to change the border of an element to HunterLab 12.0165, 8.7882, 3.8132 is called "border".

The border property can be set on classes, ids or directly on the HTML element.

This example shows the color as border, it can be applied via the CSS property "border" or "border-color".

```
.border, #border, table{ border:4px solid rgb(55, 22, 22) }
```


If only the border color should be changed use the property `border-color`.

```
.border{ border-color:rgb(55, 22, 22) }
```

If you want to add a box shadow in that color use:

Here you see how a box with a 4 pixel `rgb(55, 22, 22)` colored shadow looks like.

```
.boxshadow{ -moz-box-shadow:4px 4px 4px  
4px rgb(55, 22, 22); -webkit-box-  
shadow:4px 4px 4px 4px rgb(55, 22, 22);  
box-shadow:4px 4px 4px 4px rgb(55, 22, 22)  
}
```

Background

The CSS property to change the background color of an element to HunterLab 12.0165, 8.7882, 3.8132 is called "background". The background property can be set on classes, ids or directly on the HTML element.

```
.background, #background, body{  
background: rgb(55, 22, 22) }
```

If only the background color should be changed can be used:

```
.background{ background-color: rgb(55, 22,  
22) }
```

This example shows the color as background, it is applied via the CSS property "background".

To optimize and compress your CSS code, you can use our [online CSS compressor and optimizer](#) based on csstidy. If you want to create a linear or radial gradient as background or border, check our [CSS Gradient Generator](#).

Hey! You found this booklet interesting? Support Converting Colors with the new Membership Option!

The pro membership hides all ads, plus gives you double the colors in the color bucket, and more awesome pro features!

[Learn more, Memberships starting at \\$2.50/m!](#)

**Follow me
on Twitter!**

@ConvertingColor