

Converting Colors

HunterLab(12.0874, 9.0028,
4.3595)

Have a look what the booklet for
HunterLab(12.0874, 9.0028, 4.3595)
contains.

HunterLab(12.1040, 8.9620, 4.3735)	3
<i>Conversions</i>	4
<i>Details</i>	6
<i>Harmonies</i>	12
<i>Previews</i>	24
<i>Color Blindness Simulation</i>	28
<i>CSS Examples</i>	31

Color

**HunterLab(12.1040, 8.9620,
4.3735)**

Conversions

Conversions Part 1

Format	Color
Hex	381614
RGB	56, 22, 20
RGB Percent	22%, 9%, 8%
CMY	0.7804, 0.9137, 0.9216
CMYK	0.00, 0.61, 0.64, 0.78
HSL	3°, 47%, 15%
HSV	3°, 64%, 22%
XYZ	2.0441, 1.4651, 0.8369
YIQ	31.9380, 20.9060, 6.5860

Conversions

Conversions Part 2

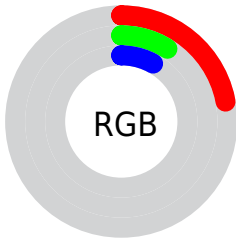
Format	Color
R_{YB}	56, 22, 20
Decimal	3675668
CIE Lab	12.38, 16.70, 9.38
CIE LCh	12, 19.153, 29.332
Yxy	1.4651, 0.4703, 0.3371
Android (android.graphics.Color)	4281865748 (0xFF381614)
YUV	31.9380, -5.8854, 21.1024
Hunter-Lab	12.1040, 8.9620, 4.3735

Details

The HunterLab color **12.1040, 8.9620, 4.3735** is a dark color, and the websafe version is hex **330000**. A complement of this color would be **17.5282, -7.0346, -1.9776**, and the grayscale version is **12.0123, -0.6409, 0.6527**.

A 20% lighter version of the original color is **26.9212, 10.1979, 6.7301**, and 0.0000, NaN, NaN is the 20% darker color. If you saturate the color by 10%, you get **11.2500, 10.6008, 4.8524**, and if you desaturate by 10%, it is **13.0798, 7.2909, 3.8628**.

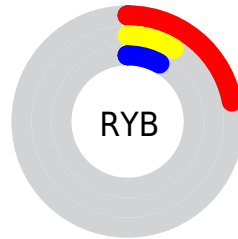
Distribution



Red (22%)

Green (9%)

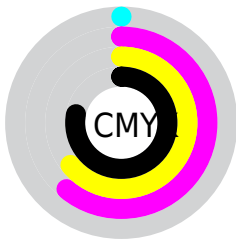
Blue (8%)



Red (22%)

Yellow (9%)

Blue (8%)

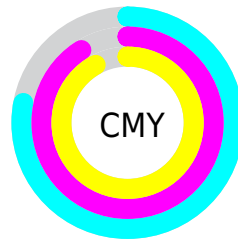


Cyan (0%)

Magenta (61%)

Yellow (64%)

Black (78%)



Cyan (78%)

Magenta (91%)

Yellow (92%)

Brightness & Saturation Gradients

These gradients show how the HunterLab color 12.1040, 8.9620, 4.3735 changes by changing the brightness by 10 percent. The first figure shows a shift by +10% for each color and the second figure -10%.

Similar to the brightness gradients but the following saturation gradients show a change of the HunterLab color 12.1040, 8.9620, 4.3735 by changing the saturation by 10% instead.

■ 12.1040, 8.9620,
4.3735

■ 12.1040, 8.9620,
4.3735

■ 103.0995, 12.2324,
14.3750

■ 5.1381, 13.8861,
3.5967

■ 26.9386, 10.4410,
6.6990

0.0000, NaN, NaN

0.0000, NaN, NaN

■ 35.7077, 10.9693,
7.8073

0.0000, NaN, NaN

■ 45.2639, 11.3862,
8.8994

0.0000, NaN, NaN

0.0000, NaN, NaN

■ 55.5470, 11.7073,
9.9857

0.0000, NaN, NaN

■ 66.5088, 11.9442,
11.0727

0.0000, NaN, NaN

■ 78.1096, 12.1061,

0.0000, NaN, NaN

12.1648

■ 90.3161, 12.2002,
13.2649

■ 12.1040, 8.9620,
4.3735

■ 12.1040, 8.9620,
4.3735

■ 11.2500, 10.6008,
4.8524

■ 13.0798, 7.2909,
3.8628

■ 10.5321, 12.1383,
5.2797

■ 14.1606, 5.6369,
3.3386

■ 9.9044, 13.5758,
5.7906

■ 15.3325, 4.0259,
2.8135

■ 9.5307, 14.4988,
6.1266

■ 16.5829, 2.4709,
2.2949

■ 17.9015, 0.9754,
1.7864

■ 19.2793, -0.4619,
1.2897

■ 20.7094, -1.8455,
0.8047

■ 22.1856, -3.1806,
0.3310

■ 23.7030, -4.4731,
-0.1325

Harmonies

Analogous

The Analogous color harmony consists of three colors that are next to each other on the color wheel.



12.1043, 10.5857, 0.5515



12.1040, 8.9620, 4.3735



12.1043, 4.6760, 6.8023

Triad

The Triadic color harmony groups three colors that are evenly spaced from another and form a triangle on the color wheel.



12.1043, 8.9612, 4.3737



12.1043, -7.8752, 4.5061



12.1043, -0.7587, -12.5734

Complementary

The Complementary color scheme is a pair of colors which are on the opposite of each other on the color wheel.



12.1040, 8.9620, 4.3735



17.5282, -7.0346, -1.9776

Split Complementary

Split-complementary colors differ from the complementary color scheme. The scheme consists of three colors, the original color and two neighbors of the complement color.



12.1043, -5.1834, -10.1870



12.1040, 8.9620, 4.3735



12.1043, -8.8597, 0.7653

Square

The Square scheme is like the rectangle color scheme, but the four colors are evenly spaced on the color wheel.



12.1043, 8.9612, 4.3737



12.1043, -5.0180, 6.8787



12.1043, -7.9592, -4.7522



12.1043, 4.4496, -10.3787

Rectangle

The Rectangle color scheme consists of four colors that form a rectangle on the color wheel.



12.1040, 8.9620, 4.3735



12.1043, 1.1911, 7.6063



12.1043, -7.9592, -4.7522



12.1043, -2.3806, -12.2692

Sweetspot

The Sweet Spot groups the original color and five complimentary colors.



12.1043, 8.9612, 4.3737



22.5445, 2.3912, 2.7275



12.6858, 13.7030, -8.3699



11.9725, 1.3939, 1.4990



61.6487, -3.2894, 3.3495



14.0024, -0.7471, 0.7608

Same Dimension

The Same Dimension uses a secret algorithm to generate beautiful new colors.



12.1043, 8.9612, 4.3737



14.1452, 15.3077, 6.7599



15.4770, 1.8544, 7.0340



10.1556, 0.0617, 0.8083



15.4137, 24.5489, 9.9276



39.2101, 65.3940, 25.3059

Inverse Universe

The Inverse Universe completely reimagines the original color for something new.



17.5282, -7.0346, -1.9776



22.5655, -10.1805, -3.2725



13.0696, -0.4835, -8.9276



10.5800, -1.1389, 0.3253



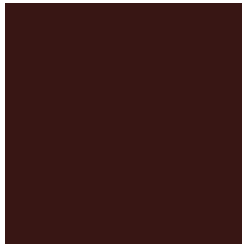
27.4525, -13.5374, -5.0898



70.5742, -34.5657, -13.5941

Previews

White Background



This preview shows how the HunterLab color 12.1040, 8.9620, 4.3735 looks on a white background.

Color Contrast Check

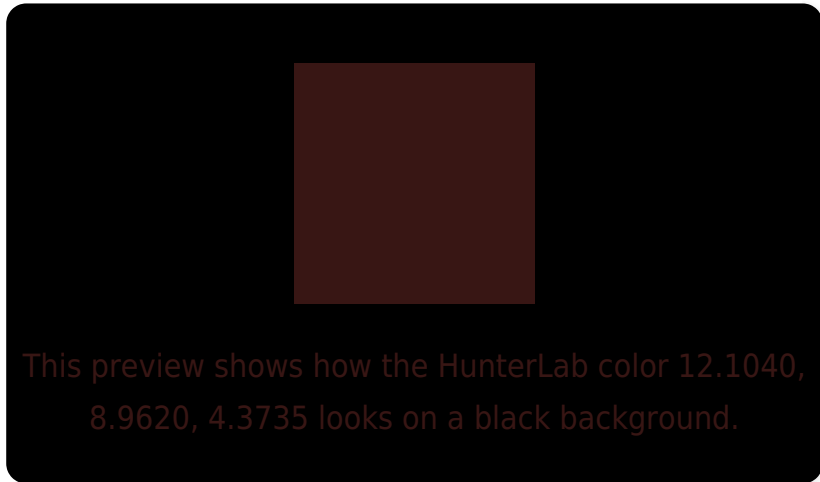
Large Text (above 18pt) WCAG AA ✓ Pass

Any Text WCAG AA ✓ Pass

Large Text (above 18pt) WCAG AAA ✓ Pass

Any Text WCAG AAA ✓ Pass

Black Background



Color Contrast Check

Large Text (above 18pt) WCAG AA × Fail

Any Text WCAG AA × Fail

Large Text (above 18pt) WCAG AAA × Fail

Any Text WCAG AAA × Fail

If you want to check with other color combinations, try the [Color Contrast Checker](#).

HunterLab 12.1040, 8.9620, 4.3735 Background



This preview shows how black text looks on a background with the HunterLab color 12.1040, 8.9620, 4.3735.



This preview shows how white text looks on a background with the HunterLab color 12.1040, 8.9620,

Color Blindness Simulation

Color vision deficiency is a very complex topic, and I could not describe the different causes any better than Wikipedia does, so if you want to learn more, you should check out their [article about color blindness](#).

Dichromacy



Original Color

12.1040, 8.9620, 4.3735

Protanopia

12.3642, -0.9019, 3.4591

Deuteranopia

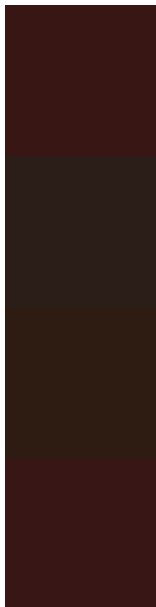
12.4423, 0.3212, 4.9456



Tritanopia

12.1509, 9.1810, 3.6927

Trichromacy



Original Color

12.1040, 8.9620, 4.3735

Protanomaly

12.0590, 2.4366, 3.4878

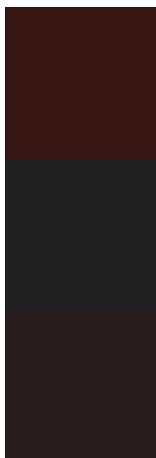
Deuteranomaly

12.0763, 3.3958, 4.4760

Tritanomaly

12.1347, 9.1053, 3.9280

Monochromacy



Original Color

12.1040, 8.9620, 4.3735

Achromatopsia

12.0183, -0.6413, 0.6530

Achromatomaly

11.7719, 2.7402, 1.7685

CSS Examples

Text

The CSS property to change the color of the text to HunterLab 12.1040, 8.9620, 4.3735 is called "color". The color property can be set on classes, ids or directly on the HTML element.

This example shows how text in the color `rgb(56, 22, 20)` looks like.

```
.text, #text, p{  
    color:rgb(56, 22, 20)  
}
```

If you want to add a text shadow in that color use the text-shadow property, you can generate a text shadow directly with our [CSS Text Shadow Generator](#).

Here you see how black text with a 4 pixel rgb(56, 22, 20) colored shadow looks like.

```
.shadow{ text-shadow: 4px 4px 2px rgb(56, 22, 20) }
```

Border

The CSS property to change the border of an element to HunterLab 12.1040, 8.9620, 4.3735 is called "border". The border property can be set on classes, ids or directly on the HTML element.

This example shows the color as border, it can be applied via the CSS property "border" or "border-color".

```
.border, #border, table{ border:4px solid rgb(56, 22, 20) }
```


If only the border color should be changed use the property `border-color`.

```
.border{ border-color:rgb(56, 22, 20) }
```

If you want to add a box shadow in that color use:

Here you see how a box with a 4 pixel `rgb(56, 22, 20)` colored shadow looks like.

```
.boxshadow{ -moz-box-shadow:4px 4px 4px  
4px rgb(56, 22, 20); -webkit-box-  
shadow:4px 4px 4px 4px rgb(56, 22, 20);  
box-shadow:4px 4px 4px 4px rgb(56, 22, 20)  
}
```

Background

The CSS property to change the background color of an element to HunterLab 12.1040, 8.9620, 4.3735 is called "background". The background property can be set on classes, ids or directly on the HTML element.

```
.background, #background, body{  
background: rgb(56, 22, 20) }
```

If only the background color should be changed can be used:

```
.background{ background-color: rgb(56, 22,  
20) }
```

This example shows the color as background, it is applied via the CSS property "background".

To optimize and compress your CSS code, you can use our [online CSS compressor and optimizer](#) based on csstidy. If you want to create a linear or radial gradient as background or border, check our [CSS Gradient Generator](#).

Hey! You found this booklet interesting? Support Converting Colors with the new Membership Option!

The pro membership hides all ads, plus gives you double the colors in the color bucket, and more awesome pro features!

[Learn more, Memberships starting at \\$2.50/m!](#)

**Follow me
on Twitter!**

@ConvertingColor