

Converting Colors

HunterLab(12.4014, 1.2697,
4.7144)

Have a look what the booklet for
HunterLab(12.4014, 1.2697, 4.7144)
contains.

HunterLab(12.4120, 1.3434, 4.7288)	3
<i>Conversions</i>	4
<i>Details</i>	6
<i>Harmonies</i>	12
<i>Previews</i>	24
<i>Color Blindness Simulation</i>	28
<i>CSS Examples</i>	31

Color

**HunterLab(12.4120, 1.3434,
4.7288)**

Conversions

Conversions Part 1

Format	Color
Hex	2B1F13
RGB	43, 31, 19
RGB Percent	17%, 12%, 7%
CMY	0.8314, 0.8784, 0.9255
CMYK	0.00, 0.28, 0.56, 0.83
HSL	30°, 39%, 12%
HSV	30°, 56%, 17%
XYZ	1.6038, 1.5406, 0.8289
YIQ	33.2200, 11.0040, -1.1880

Conversions

Conversions Part 2

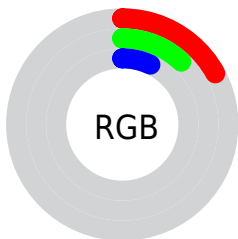
Format	Color
RYB	43, 43, 19
Decimal	2826003
CIELab	12.86, 3.83, 10.32
CIELCh	13, 11.011, 69.639
Yxy	1.5407, 0.4036, 0.3877
Android (android.graphics.Color)	4281016083 (0xFF2B1F13)
YUV	33.2200, -7.0105, 8.5771
Hunter-Lab	12.4120, 1.3434, 4.7288

Details

The HunterLab color **12.4120, 1.3434, 4.7288** is a dark color, and the websafe version is hex **333333**. A complement of this color would be **11.3700, -1.1439, -4.9318**, and the grayscale version is **12.4207, -0.6627, 0.6748**.

A 20% lighter version of the original color is **27.3732, 0.8621, 7.3198**, and 0.0000, NaN, NaN is the 20% darker color. If you saturate the color by 10%, you get **11.9109, 1.8764, 5.1780**, and if you desaturate by 10%, it is **12.9336, 0.8559, 4.1959**.

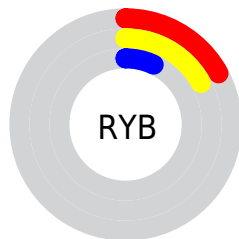
Distribution



Red (17%)

Green (12%)

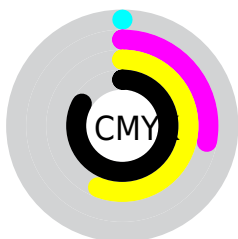
Blue (7%)



Red (17%)

Yellow (17%)

Blue (7%)

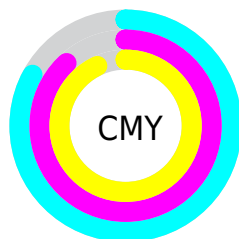


Cyan (0%)

Magenta (28%)

Yellow (56%)

Black (83%)



Cyan (83%)

Magenta (88%)

Yellow (93%)

Brightness & Saturation Gradients

These gradients show how the HunterLab color 12.4120, 1.3434, 4.7288 changes by changing the brightness by 10 percent. The first figure shows a shift by +10% for each color and the second figure -10%.

Similar to the brightness gradients but the following saturation gradients show a change of the HunterLab color 12.4120, 1.3434, 4.7288 by changing the saturation by 10% instead.

■ 12.4120, 1.3434,
4.7288

■ 12.4120, 1.3434,
4.7288

■ 103.7265, -1.5629,
15.2638

■ 5.6310, 2.6638,
3.9417

■ 27.3400, 1.1171,
7.2135

0.0000, NaN, NaN

0.0000, NaN, NaN

■ 36.1485, 0.8895,
8.3887

0.0000, NaN, NaN

■ 45.7407, 0.6006,
9.5415

0.0000, NaN, NaN

■ 56.0574, 0.2578,
10.6836

0.0000, NaN, NaN

0.0000, NaN, NaN

■ 67.0507, -0.1337,
11.8227

0.0000, NaN, NaN

■ 78.6813, -0.5698,

0.0000, NaN, NaN

12.9636

■ 90.9161, -1.0471,
14.1098

■ 12.4120, 1.3434,
4.7288

■ 12.4120, 1.3434,
4.7288

■ 11.9109, 1.8764,
5.1780

■ 12.9336, 0.8559,
4.1959

■ 11.4309, 2.4571,
5.5373

■ 13.4736, 0.4140,
3.5849

■ 10.9691, 3.0622,
5.8659

■ 14.0310, 0.0153,
2.9018

■ 10.5207, 3.6584,
6.2555

■ 14.6047, -0.3422,
2.1523

■ 10.3371, 3.9048,
6.4381

■ 15.1937, -0.6609,
1.3417

■ 15.7969, -0.9432,
0.4751

■ 16.4136, -1.1913,
-0.4432

■ 17.0428, -1.4076,
-1.4089

■ 17.6839, -1.5942,
-2.4185

Harmonies

Analogous

The Analogous color harmony consists of three colors that are next to each other on the color wheel.



12.4123, 3.9427, 3.6123



12.4120, 1.3434, 4.7288



12.4123, -1.5853, 4.9068

Triad

The Triadic color harmony groups three colors that are evenly spaced from another and form a triangle on the color wheel.



12.4123, 1.3429, 4.7290



12.4123, -5.7082, -0.2483



12.4123, 3.1091, -4.1576

Complementary

The Complementary color scheme is a pair of colors which are on the opposite of each other on the color wheel.



12.4120, 1.3434, 4.7288



11.3700, -1.1439, -4.9318

Split Complementary

Split-complementary colors differ from the complementary color scheme. The scheme consists of three colors, the original color and two neighbors of the complement color.



12.4123, 0.2872, -5.7949



12.4120, 1.3434, 4.7288



12.4123, -4.6818, -3.2189

Square

The Square scheme is like the rectangle color scheme, but the four colors are evenly spaced on the color wheel.



12.4123, 1.3429, 4.7290



12.4123, -5.4818, 2.3874



12.4123, -2.5490, -5.4165



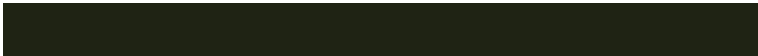
12.4123, 5.0258, -1.3210

Rectangle

The Rectangle color scheme consists of four colors that form a rectangle on the color wheel.



12.4120, 1.3434, 4.7288



12.4123, -3.3087, 4.4776



12.4123, -2.5490, -5.4165



12.4123, 2.2248, -4.8931

Sweetspot

The Sweet Spot groups the original color and five complimentary colors.



12.4123, 1.3429, 4.7290



18.5530, -0.3412, 2.9790



10.3840, 7.2082, -0.8770



10.0649, -0.1933, 1.5949



57.4755, -3.0668, 3.1228



10.7914, -0.5758, 0.5863

Same Dimension

The Same Dimension uses a secret algorithm to generate beautiful new colors.



12.4123, 1.3429, 4.7290



14.9380, 2.7895, 6.8939



15.1273, -3.1365, 6.8517



8.2251, -0.3268, 0.8253



18.8503, 9.6277, 11.7840



49.2134, 30.6238, 30.8612

Inverse Universe

The Inverse Universe completely reimagines the original color for something new.



11.3700, -1.1439, -4.9318



13.2750, -1.0920, -8.6065



8.8239, 3.5225, -9.8577



8.1409, -0.5328, 0.0499



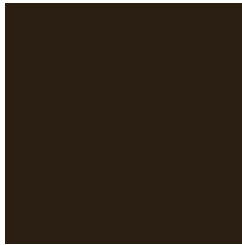
15.1768, 2.0979, -23.4986



38.7368, 10.4287, -70.9303

Previews

White Background



This preview shows how the HunterLab color 12.4120, 1.3434, 4.7288 looks on a white background.

Color Contrast Check

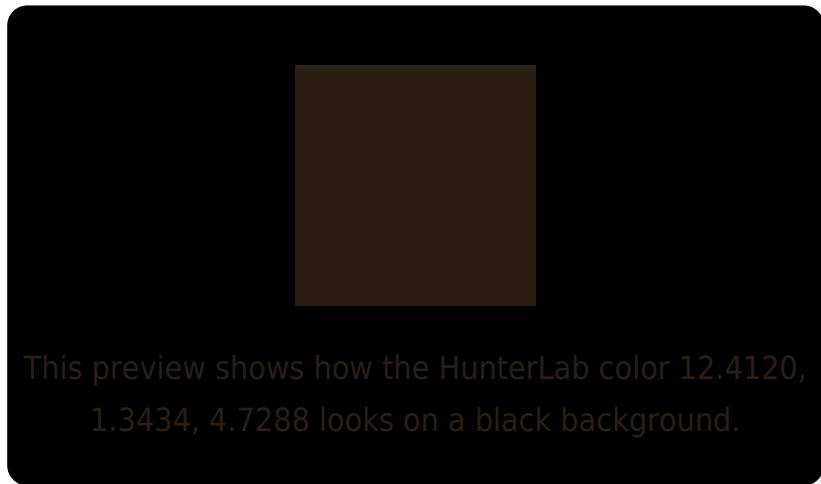
Large Text (above 18pt) WCAG AA ✓ Pass

Any Text WCAG AA ✓ Pass

Large Text (above 18pt) WCAG AAA ✓ Pass

Any Text WCAG AAA ✓ Pass

Black Background



Color Contrast Check

Large Text (above 18pt) WCAG AA × Fail

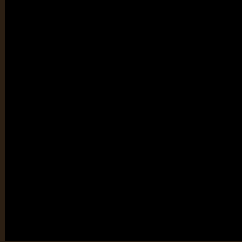
Any Text WCAG AA × Fail

Large Text (above 18pt) WCAG AAA × Fail

Any Text WCAG AAA × Fail

If you want to check with other color combinations, try the [Color Contrast Checker](#).

HunterLab 12.4120, 1.3434, 4.7288 Background



This preview shows how black text looks on a background with the HunterLab color 12.4120, 1.3434, 4.7288.



This preview shows how white text looks on a background with the HunterLab color 12.4120, 1.3434,

4.7288.

Color Blindness Simulation

Color vision deficiency is a very complex topic, and I could not describe the different causes any better than Wikipedia does, so if you want to learn more, you should check out their [article about color blindness](#).

Dichromacy



Original Color

12.4120, 1.3434, 4.7288

Protanopia

12.6011, -1.3528, 4.6271

Deuteranopia

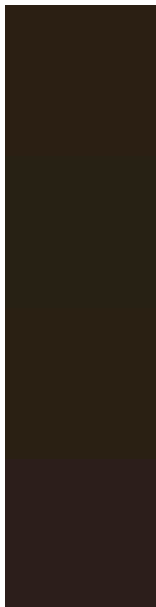
12.4558, 0.3937, 4.7494



Tritanopia

12.3227, 3.6224, 1.0818

Trichromacy



Original Color

12.4120, 1.3434, 4.7288

Protanomaly

12.5282, -0.4553, 4.5798

Deuteranomaly

12.5391, 0.6754, 4.8252

Tritanomaly

12.4224, 2.7002, 2.7529

Monochromacy



Original Color

12.4120, 1.3434, 4.7288

Achromatopsia

12.3323, -0.6580, 0.6700

Achromatomaly

12.2889, 0.1234, 2.2741

CSS Examples

Text

The CSS property to change the color of the text to HunterLab 12.4120, 1.3434, 4.7288 is called "color". The color property can be set on classes, ids or directly on the HTML element.

This example shows how text in the color `rgb(43, 31, 19)` looks like.

```
.text, #text, p{  
    color:rgb(43, 31, 19)  
}
```

If you want to add a text shadow in that color use the text-shadow property, you can generate a text shadow directly with our [CSS Text Shadow Generator](#).

Here you see how black text with a 4 pixel rgb(43, 31, 19) colored shadow looks like.

```
.shadow{ text-shadow: 4px 4px 2px rgb(43, 31, 19) }
```

Border

The CSS property to change the border of an element to HunterLab 12.4120, 1.3434, 4.7288 is called "border".

The border property can be set on classes, ids or directly on the HTML element.

This example shows the color as border, it can be applied via the CSS property "border" or "border-color".

```
.border, #border, table{ border:4px solid rgb(43, 31, 19) }
```


If only the border color should be changed use the property border-color.

```
.border{ border-color:rgb(43, 31, 19) }
```

If you want to add a box shadow in that color use:

Here you see how a box with a 4 pixel rgb(43, 31, 19) colored shadow looks like.

```
.boxshadow{ -moz-box-shadow:4px 4px 4px  
4px rgb(43, 31, 19); -webkit-box-  
shadow:4px 4px 4px 4px rgb(43, 31, 19);  
box-shadow:4px 4px 4px 4px rgb(43, 31, 19)  
}
```

Background

The CSS property to change the background color of an element to HunterLab 12.4120, 1.3434, 4.7288 is called "background". The background property can be set on classes, ids or directly on the HTML element.

```
.background, #background, body{  
background: rgb(43, 31, 19) }
```

If only the background color should be changed can be used:

```
.background{ background-color: rgb(43, 31,  
19) }
```

This example shows the color as background, it is applied via the CSS property "background".

To optimize and compress your CSS code, you can use our [online CSS compressor and optimizer](#) based on csstidy. If you want to create a linear or radial gradient as background or border, check our [CSS Gradient Generator](#).

Hey! You found this booklet interesting? Support Converting Colors with the new Membership Option!

The pro membership hides all ads, plus gives you double the colors in the color bucket, and more awesome pro features!

[Learn more, Memberships starting at \\$2.50/m!](#)

**Follow me
on Twitter!**

@ConvertingColor