

Converting Colors

HunterLab(12.4064, 2.6018,
4.8669)

Have a look what the booklet for
HunterLab(12.4064, 2.6018, 4.8669)
contains.

HunterLab(12.4622, 2.5432, 5.0011)	3
<i>Conversions</i>	4
<i>Details</i>	6
<i>Harmonies</i>	12
<i>Previews</i>	24
<i>Color Blindness Simulation</i>	28
<i>CSS Examples</i>	31

Color

**HunterLab(12.4622, 2.5432,
5.0011)**

Conversions

Conversions Part 1

Format	Color
Hex	2E1E12
RGB	46, 30, 18
RGB Percent	18%, 12%, 7%
CMY	0.8196, 0.8823, 0.9294
CMYK	0.00, 0.35, 0.61, 0.82
HSL	26°, 44%, 13%
HSV	26°, 61%, 18%
XYZ	1.7002, 1.5531, 0.7824
YIQ	33.4160, 13.3880, -0.3400

Conversions

Conversions Part 2

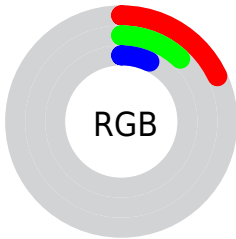
Format	Color
R_YB	46, 39, 18
Decimal	3022354
CIE Lab	12.94, 6.01, 11.12
CIE LCh	13, 12.644, 61.595
Yxy	1.5531, 0.4213, 0.3848
Android (android.graphics.Color)	4281212434 (0xFF2E1E12)
YUV	33.4160, -7.6001, 11.0362
Hunter-Lab	12.4622, 2.5432, 5.0011

Details

The HunterLab color **12.4622, 2.5432, 5.0011** is a dark color, and the websafe version is hex **333333**. A complement of this color would be **12.1237, -1.8614, -5.2027**, and the grayscale version is **12.4838, -0.6661, 0.6783**.

A 20% lighter version of the original color is **27.4790, 2.4404, 7.7513**, and 0.0000, NaN, NaN is the 20% darker color. If you saturate the color by 10%, you get **11.8829, 3.2772, 5.4115**, and if you desaturate by 10%, it is **13.0705, 1.8591, 4.5041**.

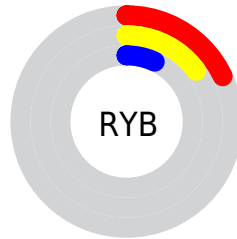
Distribution



Red (18%)

Green (12%)

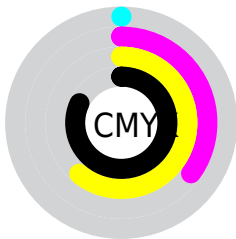
Blue (7%)



Red (18%)

Yellow (15%)

Blue (7%)

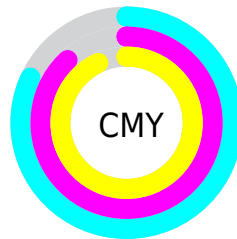


Cyan (0%)

Magenta (35%)

Yellow (61%)

Black (82%)



Cyan (82%)

Magenta (88%)

Yellow (93%)

Brightness & Saturation Gradients

These gradients show how the HunterLab color 12.4622, 2.5432, 5.0011 changes by changing the brightness by 10 percent. The first figure shows a shift by +10% for each color and the second figure -10%.

Similar to the brightness gradients but the following saturation gradients show a change of the HunterLab color 12.4622, 2.5432, 5.0011 by changing the saturation by 10% instead.

■ 12.4622, 2.5432,
5.0011

■ 12.4622, 2.5432,
5.0011

■ 103.8283, 0.7276,
15.9766

■ 5.7070, 4.2878,
3.9949

■ 27.4053, 2.6279,
7.6058

0.0000, NaN, NaN

0.0000, NaN, NaN

■ 36.2201, 2.5342,
8.8391

0.0000, NaN, NaN

■ 45.8183, 2.3693,
10.0442

0.0000, NaN, NaN

■ 56.1403, 2.1424,
11.2343

0.0000, NaN, NaN

0.0000, NaN, NaN

■ 67.1387, 1.8601,
12.4177

0.0000, NaN, NaN

■ 78.7742, 1.5276,

0.0000, NaN, NaN

13.6001

■ 91.0135, 1.1490,
14.7855

■ 12.4622, 2.5432,
5.0011

■ 12.4622, 2.5432,
5.0011

■ 11.8829, 3.2772,
5.4115

■ 13.0705, 1.8591,
4.5041

■ 11.3337, 4.0599,
5.7329

■ 13.7048, 1.2260,
3.9277

■ 10.8089, 4.8459,
6.0836

■ 14.3632, 0.6417,
3.2796

■ 10.3499, 5.5480,
6.4747

■ 15.0439, 0.1036,
2.5668

■ 15.7452, -0.3907,
1.7957

■ 16.4656, -0.8444,
0.9719

■ 17.2035, -1.2601,
0.1006

■ 17.9579, -1.6408,
-0.8138

■ 18.7276, -1.9891,
-1.7674

Harmonies

Analogous

The Analogous color harmony consists of three colors that are next to each other on the color wheel.



12.4625, 5.2970, 3.4760



12.4622, 2.5432, 5.0011



12.4625, -0.8441, 5.5060

Triad

The Triadic color harmony groups three colors that are evenly spaced from another and form a triangle on the color wheel.



12.4625, 2.5426, 5.0013



12.4625, -6.4632, 0.5070



12.4625, 2.8847, -5.7363

Complementary

The Complementary color scheme is a pair of colors which are on the opposite of each other on the color wheel.



12.4622, 2.5432, 5.0011



12.1237, -1.8614, -5.2027

Split Complementary

Split-complementary colors differ from the complementary color scheme. The scheme consists of three colors, the original color and two neighbors of the complement color.



12.4625, -0.4862, -7.1145



12.4622, 2.5432, 5.0011



12.4625, -5.6827, -2.9700

Square

The Square scheme is like the rectangle color scheme, but the four colors are evenly spaced on the color wheel.



12.4625, 2.5426, 5.0013



12.4625, -5.8316, 3.2511



12.4625, -3.5790, -5.9894



12.4625, 5.5087, -2.5958

Rectangle

The Rectangle color scheme consists of four colors that form a rectangle on the color wheel.



12.4622, 2.5432, 5.0011



12.4625, -2.9447, 5.2124



12.4625, -3.5790, -5.9894



12.4625, 1.7899, -6.4534

Sweetspot

The Sweet Spot groups the original color and five complimentary colors.



12.4625, 2.5426, 5.0013



19.0914, 0.0072, 3.0487



10.6343, 8.8605, -1.8709



10.5978, 0.0300, 1.7365



58.5142, -3.1222, 3.1792



11.5809, -0.6179, 0.6292

Same Dimension

The Same Dimension uses a secret algorithm to generate beautiful new colors.



12.4625, 2.5426, 5.0013



14.5287, 4.7079, 7.0606



15.4956, -2.6477, 7.3123



8.9137, -0.2909, 0.8792



18.2895, 12.5869, 11.4902



46.8486, 38.4187, 29.5405

Inverse Universe

The Inverse Universe completely reimagines the original color for something new.



12.1237, -1.8614, -5.2027



13.9952, -2.0420, -8.7400



9.1543, 3.4531, -11.0394



8.8875, -0.6421, 0.0750



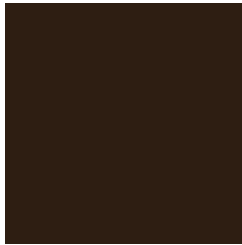
17.1031, -0.4046, -20.5039



43.4511, 2.7143, -60.1696

Previews

White Background



This preview shows how the HunterLab color 12.4622, 2.5432, 5.0011 looks on a white background.

Color Contrast Check

Large Text (above 18pt) WCAG AA ✓ Pass

Any Text WCAG AA ✓ Pass

Large Text (above 18pt) WCAG AAA ✓ Pass

Any Text WCAG AAA ✓ Pass

Black Background



Color Contrast Check

Large Text (above 18pt) WCAG AA × Fail

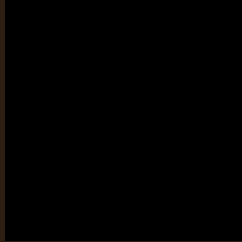
Any Text WCAG AA × Fail

Large Text (above 18pt) WCAG AAA × Fail

Any Text WCAG AAA × Fail

If you want to check with other color combinations, try the [Color Contrast Checker](#).

HunterLab 12.4622, 2.5432, 5.0011 Background



This preview shows how black text looks on a background with the HunterLab color 12.4622, 2.5432, 5.0011.



This preview shows how white text looks on a background with the HunterLab color 12.4622, 2.5432,

Color Blindness Simulation

Color vision deficiency is a very complex topic, and I could not describe the different causes any better than Wikipedia does, so if you want to learn more, you should check out their [article about color blindness](#).

Dichromacy



Original Color

12.4622, 2.5432, 5.0011

Protanopia

12.5872, -1.4295, 4.8292

Deuteranopia

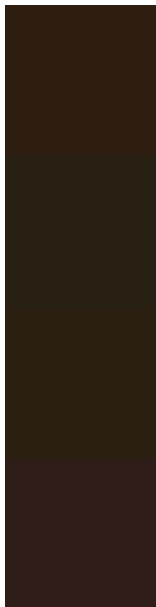
12.4423, 0.3212, 4.9456



Tritanopia

12.3846, 4.7731, 1.5088

Trichromacy



Original Color

12.4622, 2.5432, 5.0011

Protanomaly

12.5930, -0.2591, 4.8546

Deuteranomaly

12.3985, 1.2717, 4.9256

Tritanomaly

12.4806, 3.8759, 3.1157

Monochromacy



Original Color

12.4622, 2.5432, 5.0011

Achromatopsia

12.3323, -0.6580, 0.6700

Achromatomaly

12.3650, 0.3824, 2.3581

CSS Examples

Text

The CSS property to change the color of the text to HunterLab 12.4622, 2.5432, 5.0011 is called "color". The color property can be set on classes, ids or directly on the HTML element.

This example shows how text in the color `rgb(46, 30, 18)` looks like.

```
.text, #text, p{  
    color:rgb(46, 30, 18)  
}
```

If you want to add a text shadow in that color use the text-shadow property, you can generate a text shadow directly with our [CSS Text Shadow Generator](#).

Here you see how black text with a 4 pixel rgb(46, 30, 18) colored shadow looks like.

```
.shadow{ text-shadow: 4px 4px 2px rgb(46, 30, 18) }
```

Border

The CSS property to change the border of an element to HunterLab 12.4622, 2.5432, 5.0011 is called "border". The border property can be set on classes, ids or directly on the HTML element.

This example shows the color as border, it can be applied via the CSS property "border" or "border-color".

```
.border, #border, table{ border:4px solid rgb(46, 30, 18) }
```


If only the border color should be changed use the property border-color.

```
.border{ border-color:rgb(46, 30, 18) }
```

If you want to add a box shadow in that color use:

Here you see how a box with a 4 pixel rgb(46, 30, 18) colored shadow looks like.

```
.boxshadow{ -moz-box-shadow:4px 4px 4px  
4px rgb(46, 30, 18); -webkit-box-  
shadow:4px 4px 4px 4px rgb(46, 30, 18);  
box-shadow:4px 4px 4px 4px rgb(46, 30, 18)  
}
```

Background

The CSS property to change the background color of an element to HunterLab 12.4622, 2.5432, 5.0011 is called "background". The background property can be set on classes, ids or directly on the HTML element.

```
.background, #background, body{  
background: rgb(46, 30, 18) }
```

If only the background color should be changed can be used:

```
.background{ background-color: rgb(46, 30,  
18) }
```

This example shows the color as background, it is applied via the CSS property "background".

To optimize and compress your CSS code, you can use our [online CSS compressor and optimizer](#) based on csstidy. If you want to create a linear or radial gradient as background or border, check our [CSS Gradient Generator](#).

Hey! You found this booklet interesting? Support Converting Colors with the new Membership Option!

The pro membership hides all ads, plus gives you double the colors in the color bucket, and more awesome pro features!

[Learn more, Memberships starting at \\$2.50/m!](#)

**Follow me
on Twitter!**

@ConvertingColor