

# Converting Colors

HunterLab(12.5000, -0.7146,  
6.0248)

Have a look what the booklet for  
HunterLab(12.5000, -0.7146, 6.0248)  
contains.

<b>HunterLab(12.5115, -0.7046, 6.0489)</b> .....	3
<b><i>Conversions</i></b> .....	4
<b><i>Details</i></b> .....	6
<b><i>Harmonies</i></b> .....	12
<b><i>Previews</i></b> .....	24
<b><i>Color Blindness Simulation</i></b> .....	28
<b><i>CSS Examples</i></b> .....	31

# Color

**HunterLab(12.5115, -0.7046,  
6.0489)**

# Conversions

## Conversions Part 1

Format	Color
Hex	28210C
RGB	40, 33, 12
RGB Percent	16%, 13%, 5%
CMY	0.8431, 0.8706, 0.9529
CMYK	0.00, 0.17, 0.70, 0.84
HSL	45°, 54%, 10%
HSV	45°, 70%, 16%
XYZ	1.4853, 1.5654, 0.5717
YIQ	32.6990, 10.9130, -5.0470

# Conversions

## Conversions Part 2

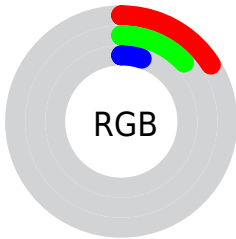
<b>Format</b>	<b>Color</b>
<b>R<sub>YB</sub></b>	21, 40, 12
Decimal	2629900
CIE <sub>Lab</sub>	13.02, -0.07, 14.27
CIE <sub>LCh</sub>	13, 14.268, 90.291
Yxy	1.5655, 0.4100, 0.4321
Android (android.graphics.Color)	4280819980 (0xFF28210C)
YUV	32.6990, -10.2046, 6.4030
Hunter-Lab	12.5115, -0.7046, 6.0489

# Details

The HunterLab color **12.5115, -0.7046, 6.0489** is a dark color, and the websafe version is hex **333333**. A complement of this color would be **8.3492, 1.7974, -9.0795**, and the grayscale version is **12.2665, -0.6545, 0.6665**.

A 20% lighter version of the original color is **27.4991, -1.5094, 9.1255**, and 0.0000, NaN, NaN is the 20% darker color. If you saturate the color by 10%, you get **12.2546, -0.5367, 6.4303**, and if you desaturate by 10%, it is **12.7775, -0.8378, 5.5840**.

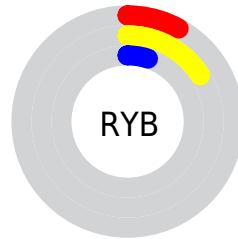
# Distribution



Red (16%)

Green (13%)

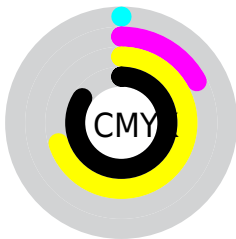
Blue (5%)



Red (8%)

Yellow (16%)

Blue (5%)

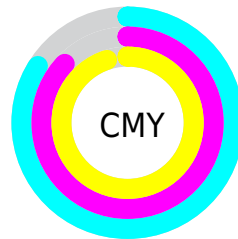


Cyan (0%)

Magenta (17%)

Yellow (70%)

Black (84%)



Cyan (84%)

Magenta (87%)

Yellow (95%)

# Brightness & Saturation Gradients

These gradients show how the HunterLab color 12.5115, -0.7046, 6.0489 changes by changing the brightness by 10 percent. The first figure shows a shift by +10% for each color and the second figure -10%.

Similar to the brightness gradients but the following saturation gradients show a change of the HunterLab color 12.5115, -0.7046, 6.0489 by changing the saturation by 10% instead.



12.5115, -0.7046,  
6.0489

12.5115, -0.7046,  
6.0489

103.9282, -5.6255,  
18.7013

5.7805, -0.3633,  
4.0463

27.4694, -1.5150,  
9.0456

0.0000, NaN, NaN

0.0000, NaN, NaN

36.2905, -1.9908,  
10.5130

0.0000, NaN, NaN

45.8943, -2.5081,  
11.9285

0.0000, NaN, NaN

56.2217, -3.0636,  
13.3108

0.0000, NaN, NaN

0.0000, NaN, NaN

67.2251, -3.6551,  
14.6721

0.0000, NaN, NaN

78.8653, -4.2803,

0.0000, NaN, NaN

16.0206

■ 91.1091, -4.9376,  
17.3622

■ 12.5115, -0.7046,  
6.0489

■ 12.5115, -0.7046,  
6.0489

■ 12.2546, -0.5367,  
6.4303

■ 12.7775, -0.8378,  
5.5840

■ 11.9998, -0.3672,  
6.8202

■ 13.0528, -0.9290,  
5.0205

■ 11.7463, -0.2022,  
7.2344

■ 13.3374, -0.9789,  
4.3597

■ 11.7463, -0.2022,  
7.2345

■ 13.6314, -0.9878,  
3.6037

■ 13.9344, -0.9565,  
2.7550

■ 14.2463, -0.8860,  
1.8164

■ 14.5668, -0.7772,  
0.7913

■ 14.8958, -0.6315,  
-0.3172

■ 15.2330, -0.4499,  
-1.5054

# Harmonies

## Analogous

The Analogous color harmony consists of three colors that are next to each other on the color wheel.



12.5118, 3.1393, 5.4277



12.5115, -0.7046, 6.0489



12.5118, -4.1255, 5.4038

# Triad

The Triadic color harmony groups three colors that are evenly spaced from another and form a triangle on the color wheel.



12.5118, -0.7051, 6.0490



12.5118, -6.3433, -3.3298



12.5118, 6.2869, -3.2505

# Complementary

The Complementary color scheme is a pair of colors which are on the opposite of each other on the color wheel.



12.5115, -0.7046, 6.0489



8.3492, 1.7974, -9.0795

# Split Complementary

Split-complementary colors differ from the complementary color scheme. The scheme consists of three colors, the original color and two neighbors of the complement color.



12.5118, 3.2106, -6.8758



12.5115, -0.7046, 6.0489



12.5118, -4.0688, -6.9303

# Square

The Square scheme is like the rectangle color scheme, but the four colors are evenly spaced on the color wheel.



12.5118, -0.7051, 6.0490



12.5118, -7.1353, 0.6460



12.5118, -0.6314, -8.3871



12.5118, 7.4561, 0.7160

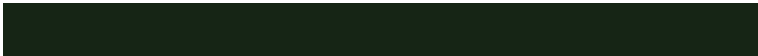


# Rectangle

The Rectangle color scheme consists of four colors that form a rectangle on the color wheel.



12.5115, -0.7046, 6.0489



12.5118, -5.7806, 4.3422



12.5118, -0.6314, -8.3871



12.5118, 5.4249, -4.5872

# Sweetspot

The Sweet Spot groups the original color and five complimentary colors.



12.5118, -0.7051, 6.0490



17.3188, -1.2078, 3.6892



8.7241, 7.7327, 1.3239



9.5391, -0.6632, 2.0022



56.4399, -3.0115, 3.0665



10.0114, -0.5342, 0.5439



# Same Dimension

The Same Dimension uses a secret algorithm to generate beautiful new colors.



12.5118, -0.7051, 6.0490



15.0300, -0.4289, 8.3296



13.6655, -4.9438, 6.8249



8.3322, -0.5050, 0.9426



23.3658, 0.7713, 14.4114



62.1724, 4.3321, 38.3862



# Inverse Universe

The Inverse Universe completely reimagines the original color for something new.



8.3492, 1.7974, -9.0795



8.6774, 3.9522, -15.9836



7.4472, 5.7360, -11.2930



8.0336, -0.3547, -0.0792



10.8629, 11.7985, -39.0472



26.9690, 39.5641, -119.1164



# Previews

## White Background



This preview shows how the HunterLab color 12.5115, -0.7046, 6.0489 looks on a white background.

## Color Contrast Check

Large Text (above 18pt) WCAG AA ✓ Pass

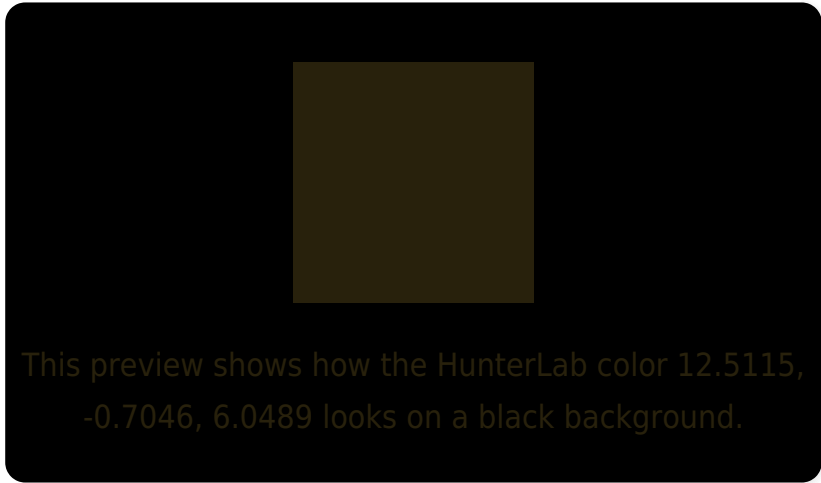
Any Text WCAG AA ✓ Pass

Large Text (above 18pt) WCAG AAA ✓ Pass

Any Text WCAG AAA ✓ Pass



# Black Background



## Color Contrast Check

Large Text (above 18pt) WCAG AA × Fail

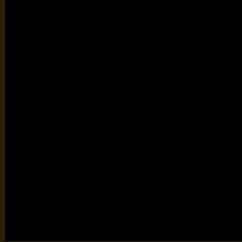
Any Text WCAG AA × Fail

Large Text (above 18pt) WCAG AAA × Fail

Any Text WCAG AAA × Fail

If you want to check with other color combinations, try the [Color Contrast Checker](#).

## HunterLab 12.5115, -0.7046, 6.0489 Background



This preview shows how black text looks on a background with the HunterLab color 12.5115, -0.7046, 6.0489.



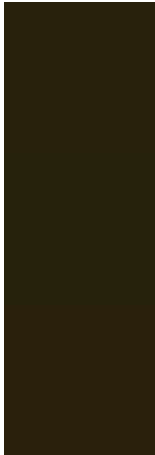
This preview shows how white text looks on a background with the HunterLab color 12.5115, -0.7046, 6.0489.



# Color Blindness Simulation

Color vision deficiency is a very complex topic, and I could not describe the different causes any better than Wikipedia does, so if you want to learn more, you should check out their [article about color blindness](#).

## Dichromacy



### Original Color

12.5115, -0.7046, 6.0489

### Protanopia

12.5804, -1.6164, 6.0844

### Deuteranopia

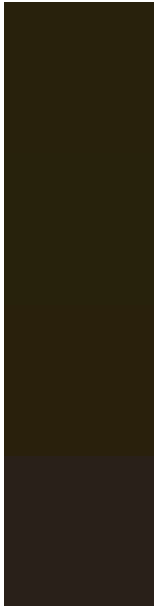
12.4572, 0.2341, 6.0247



## Tritanopia

12.5778, 2.3891, 1.0097

# Trichromacy



## Original Color

12.5115, -0.7046, 6.0489

## Protanomaly

12.6568, -1.3459, 6.1461

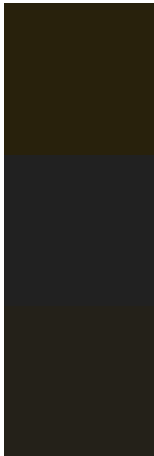
## Deuteranomaly

12.3733, -0.0525, 5.9567

## Tritanomaly

12.5484, 0.8916, 3.4024

# Monochromacy



## Original Color

12.5115, -0.7046, 6.0489

## Achromatopsia

12.3323, -0.6580, 0.6700

## Achromatomaly

12.3813, -0.8078, 3.2110

# CSS Examples

## Text

The CSS property to change the color of the text to HunterLab 12.5115, -0.7046, 6.0489 is called "color". The color property can be set on classes, ids or directly on the HTML element.

This example shows how text in the color `rgb(40, 33, 12)` looks like.

```
.text, #text, p{  
    color:rgb(40, 33, 12)  
}
```

If you want to add a text shadow in that color use the text-shadow property, you can generate a text shadow directly with our [CSS Text Shadow Generator](#).

Here you see how black text with a 4 pixel rgb(40, 33, 12) colored shadow looks like.

```
.shadow{ text-shadow: 4px 4px 2px rgb(40, 33, 12) }
```

## Border

The CSS property to change the border of an element to HunterLab 12.5115, -0.7046, 6.0489 is called "border". The border property can be set on classes, ids or directly on the HTML element.

This example shows the color as border, it can be applied via the CSS property "border" or "border-color".

```
.border, #border, table{ border:4px solid rgb(40, 33, 12) }
```



If only the border color should be changed use the property `border-color`.

```
.border{ border-color:rgb(40, 33, 12) }
```

If you want to add a box shadow in that color use:

Here you see how a box with a 4 pixel `rgb(40, 33, 12)` colored shadow looks like.

```
.boxshadow{ -moz-box-shadow:4px 4px 4px  
4px rgb(40, 33, 12); -webkit-box-  
shadow:4px 4px 4px 4px rgb(40, 33, 12);  
box-shadow:4px 4px 4px 4px rgb(40, 33, 12)  
}
```

# Background

The CSS property to change the background color of an element to HunterLab 12.5115, -0.7046, 6.0489 is called "background". The background property can be set on classes, ids or directly on the HTML element.

```
.background, #background, body{  
background: rgb(40, 33, 12) }
```

If only the background color should be changed can be used:

```
.background{ background-color: rgb(40, 33,  
12) }
```

This example shows the color as background, it is applied via the CSS property "background".

To optimize and compress your CSS code, you can use our [online CSS compressor and optimizer](#) based on csstidy. If you want to create a linear or radial gradient as background or border, check our [CSS Gradient Generator](#).

# Hey! You found this booklet interesting? Support Converting Colors with the new Membership Option!

The pro membership hides all ads, plus gives you double the colors in the color bucket, and more awesome pro features!

**[Learn more, Memberships starting at \\$2.50/m!](#)**

**Follow me  
on Twitter!**

@ConvertingColor