

Converting Colors

HunterLab(12.5239, 6.4180,
0.5211)

Have a look what the booklet for
HunterLab(12.5239, 6.4180, 0.5211)
contains.

HunterLab(12.5597, 6.3886, 0.7070)	3
<i>Conversions</i>	4
<i>Details</i>	6
<i>Harmonies</i>	12
<i>Previews</i>	24
<i>Color Blindness Simulation</i>	28
<i>CSS Examples</i>	31

Color

**HunterLab(12.5597, 6.3886,
0.7070)**

Conversions

Conversions Part 1

Format	Color
Hex	321B22
RGB	50, 27, 34
RGB Percent	20%, 11%, 13%
CMY	0.8039, 0.8941, 0.8667
CMYK	0.00, 0.46, 0.32, 0.80
HSL	342°, 30%, 15%
HSV	342°, 46%, 20%
XYZ	1.9960, 1.5775, 1.7126
YIQ	34.6750, 11.4610, 7.0530

Conversions

Conversions Part 2

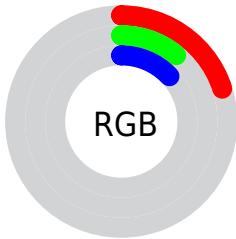
Format	Color
R_{YB}	50, 27, 34
Decimal	3283746
CIE _{Lab}	13.09, 12.55, 0.05
CIE _{LCh}	13, 12.549, 0.222
Yxy	1.5775, 0.3776, 0.2984
Android (android.graphics.Color)	4281473826 (0xFF321B22)
YUV	34.6750, -0.3328, 13.4400
Hunter-Lab	12.5597, 6.3886, 0.7070

Details

The HunterLab color **12.5597, 6.3886, 0.7070** is a dark color, and the websafe version is hex **333333**. A complement of this color would be **16.3971, -6.6104, 1.7236**, and the grayscale version is **12.8600, -0.6862, 0.6987**.

A 20% lighter version of the original color is **27.5643, 7.1830, 1.6072**, and 0.0000, NaN, NaN is the 20% darker color. If you saturate the color by 10%, you get **11.6121, 8.0152, 0.8443**, and if you desaturate by 10%, it is **13.5934, 4.7517, 0.6523**.

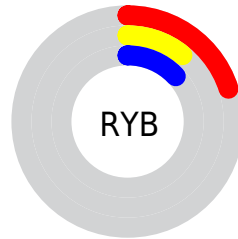
Distribution



Red (20%)

Green (11%)

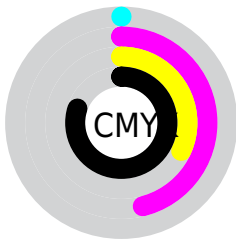
Blue (13%)



Red (20%)

Yellow (11%)

Blue (13%)

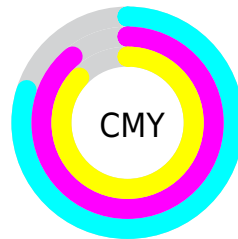


Cyan (0%)

Magenta (46%)

Yellow (32%)

Black (80%)



Cyan (80%)

Magenta (89%)

Yellow (87%)

Brightness & Saturation Gradients

These gradients show how the HunterLab color 12.5597, 6.3886, 0.7070 changes by changing the brightness by 10 percent. The first figure shows a shift by +10% for each color and the second figure -10%.

Similar to the brightness gradients but the following saturation gradients show a change of the HunterLab color 12.5597, 6.3886, 0.7070 by changing the saturation by 10% instead.

■ 12.5597, 6.3886,
0.7070

■ 12.5597, 6.3886,
0.7070

■ 104.0258, 7.7063,
5.7102

■ 5.8514, 9.0326,
0.3530

■ 27.5321, 7.3423,
1.5293

0.0000, NaN, NaN

0.0000, NaN, NaN

■ 36.3592, 7.6320,
2.0128

0.0000, NaN, NaN

■ 45.9686, 7.8248,
2.5386

0.0000, NaN, NaN

■ 56.3012, 7.9340,
3.1035

0.0000, NaN, NaN

0.0000, NaN, NaN

■ 67.3095, 7.9698,
3.7051

0.0000, NaN, NaN

■ 78.9543, 7.9399,

0.0000, NaN, NaN

4.3412

■ 91.2025, 7.8504,
5.0101

■ 12.5597, 6.3886,
0.7070

■ 12.5597, 6.3886,
0.7070

■ 11.6121, 8.0152,
0.8443

■ 13.5934, 4.7517,
0.6523

■ 10.7628, 9.5947,
1.0734

■ 14.7008, 3.1295,
0.6684

■ 10.0262, 11.0689,
1.4009

■ 15.8722, 1.5337,
0.7450

■ 9.3857, 12.4528,
1.7952

■ 17.0995, -0.0305,
0.8726

■ 8.7225, 14.1073,
2.1253

■ 18.3758, -1.5622,
1.0434

■ 8.4452, 14.8784,
2.2347

■ 19.6954, -3.0629,
1.2508

■ 21.0537, -4.5353,
1.4892

■ 22.4466, -5.9824,
1.7542

■ 23.8710, -7.4076,
2.0423

Harmonies

Analogous

The Analogous color harmony consists of three colors that are next to each other on the color wheel.



12.5600, 5.3781, -2.7298



12.5597, 6.3886, 0.7070



12.5600, 5.3488, 3.3774

Triad

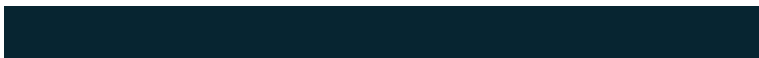
The Triadic color harmony groups three colors that are evenly spaced from another and form a triangle on the color wheel.



12.5600, 6.3880, 0.7073



12.5600, -3.7315, 4.9207



12.5600, -3.6927, -5.8284

Complementary

The Complementary color scheme is a pair of colors which are on the opposite of each other on the color wheel.



12.5597, 6.3886, 0.7070



16.3971, -6.6104, 1.7236

Split Complementary

Split-complementary colors differ from the complementary color scheme. The scheme consists of three colors, the original color and two neighbors of the complement color.



12.5600, -5.7345, -2.7815



12.5597, 6.3886, 0.7070



12.5600, -5.7552, 3.3461

Square

The Square scheme is like the rectangle color scheme, but the four colors are evenly spaced on the color wheel.



12.5600, 6.3880, 0.7073



12.5600, -0.6956, 5.4836



12.5600, -6.4493, 0.6600



12.5600, -0.6460, -7.0514

Rectangle

The Rectangle color scheme consists of four colors that form a rectangle on the color wheel.



12.5597, 6.3886, 0.7070



12.5600, 3.6899, 4.5249



12.5600, -6.4493, 0.6600



12.5600, -4.5075, -4.9502

Sweetspot

The Sweet Spot groups the original color and five complimentary colors.



12.5600, 6.3880, 0.7073



20.2441, 1.6773, 0.9585



12.3358, 6.6598, -6.7858



11.0604, 0.9864, 0.5215



59.5560, -3.1778, 3.2358



12.3795, -0.6605, 0.6726

Same Dimension

The Same Dimension uses a secret algorithm to generate beautiful new colors.



12.5600, 6.3880, 0.7073



14.4706, 10.4741, 1.1077



13.2236, 3.9764, 3.5684



9.4271, 0.1798, 0.4707



14.8866, 26.0303, 5.4603



38.8668, 67.5714, 17.2795

Inverse Universe

The Inverse Universe completely reimagines the original color for something new.



12.5600, 6.3880, 0.7073



14.4706, 10.4741, 1.1077



15.4934, -4.1137, -2.0728



9.4271, 0.1798, 0.4707



14.8866, 26.0303, 5.4603



38.8668, 67.5714, 17.2795

Previews

White Background



This preview shows how the HunterLab color 12.5597, 6.3886, 0.7070 looks on a white background.

Color Contrast Check

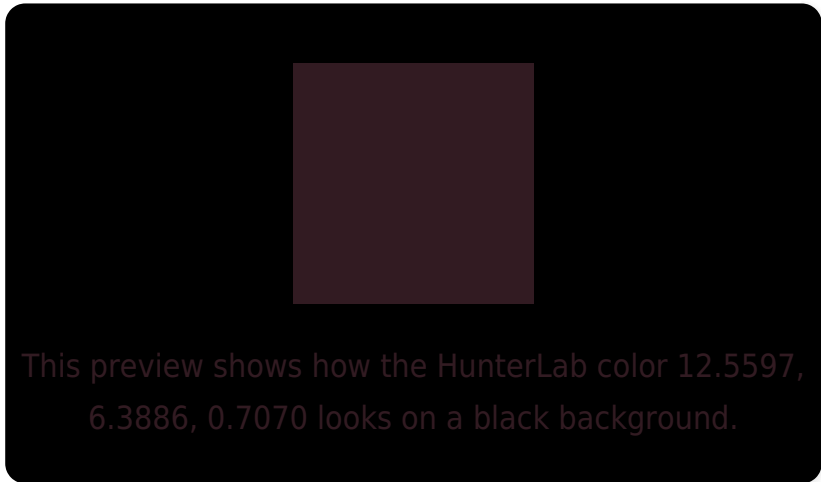
Large Text (above 18pt) WCAG AA ✓ Pass

Any Text WCAG AA ✓ Pass

Large Text (above 18pt) WCAG AAA ✓ Pass

Any Text WCAG AAA ✓ Pass

Black Background



Color Contrast Check

Large Text (above 18pt) WCAG AA × Fail

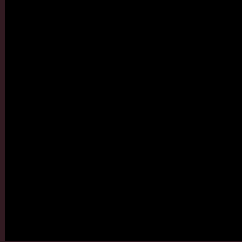
Any Text WCAG AA × Fail

Large Text (above 18pt) WCAG AAA × Fail

Any Text WCAG AAA × Fail

If you want to check with other color combinations, try the [Color Contrast Checker](#).

HunterLab 12.5597, 6.3886, 0.7070 Background



This preview shows how black text looks on a background with the HunterLab color 12.5597, 6.3886, 0.7070.

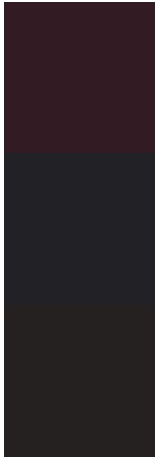


This preview shows how white text looks on a background with the HunterLab color 12.5597, 6.3886,

Color Blindness Simulation

Color vision deficiency is a very complex topic, and I could not describe the different causes any better than Wikipedia does, so if you want to learn more, you should check out their [article about color blindness](#).

Dichromacy



Original Color

12.5597, 6.3886, 0.7070

Protanopia

12.7439, -0.1494, -0.6811

Deuteranopia

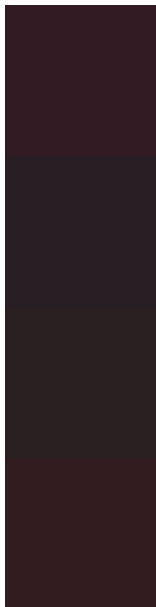
12.6870, 0.5582, 1.1033



Tritanopia

12.6584, 5.5567, 2.1442

Trichromacy



Original Color

12.5597, 6.3886, 0.7070

Protanomaly

12.5086, 2.3547, -0.5471

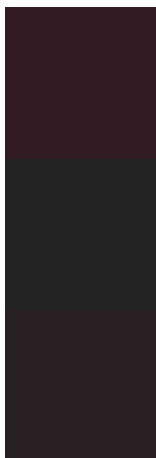
Deuteranomaly

12.5778, 2.3891, 1.0097

Tritanomaly

12.6789, 5.6588, 1.8498

Monochromacy



Original Color

12.5597, 6.3886, 0.7070

Achromatopsia

12.9643, -0.6917, 0.7044

Achromatomaly

12.6708, 1.7039, 0.3970

CSS Examples

Text

The CSS property to change the color of the text to HunterLab 12.5597, 6.3886, 0.7070 is called "color". The color property can be set on classes, ids or directly on the HTML element.

This example shows how text in the color `rgb(50, 27, 34)` looks like.

```
.text, #text, p{  
    color:rgb(50, 27, 34)  
}
```

If you want to add a text shadow in that color use the text-shadow property, you can generate a text shadow directly with our [CSS Text Shadow Generator](#).

Here you see how black text with a 4 pixel rgb(50, 27, 34) colored shadow looks like.

```
.shadow{ text-shadow: 4px 4px 2px rgb(50, 27, 34) }
```

Border

The CSS property to change the border of an element to HunterLab 12.5597, 6.3886, 0.7070 is called "border".

The border property can be set on classes, ids or directly on the HTML element.

This example shows the color as border, it can be applied via the CSS property "border" or "border-color".

```
.border, #border, table{ border:4px solid rgb(50, 27, 34) }
```


If only the border color should be changed use the property border-color.

```
.border{ border-color:rgb(50, 27, 34) }
```

If you want to add a box shadow in that color use:

Here you see how a box with a 4 pixel rgb(50, 27, 34) colored shadow looks like.

```
.boxshadow{ -moz-box-shadow:4px 4px 4px  
4px rgb(50, 27, 34); -webkit-box-  
shadow:4px 4px 4px 4px rgb(50, 27, 34);  
box-shadow:4px 4px 4px 4px rgb(50, 27, 34)  
}
```

Background

The CSS property to change the background color of an element to HunterLab 12.5597, 6.3886, 0.7070 is called "background". The background property can be set on classes, ids or directly on the HTML element.

```
.background, #background, body{  
background: rgb(50, 27, 34) }
```

If only the background color should be changed can be used:

```
.background{ background-color: rgb(50, 27,  
34) }
```

This example shows the color as background, it is applied via the CSS property "background".

To optimize and compress your CSS code, you can use our [online CSS compressor and optimizer](#) based on csstidy. If you want to create a linear or radial gradient as background or border, check our [CSS Gradient Generator](#).

Hey! You found this booklet interesting? Support Converting Colors with the new Membership Option!

The pro membership hides all ads, plus gives you double the colors in the color bucket, and more awesome pro features!

[Learn more, Memberships starting at \\$2.50/m!](#)

**Follow me
on Twitter!**

@ConvertingColor