

Converting Colors

HunterLab(13.1656, 4.5992,
4.7017)

Have a look what the booklet for
HunterLab(13.1656, 4.5992, 4.7017)
contains.

HunterLab(13.1017, 4.6647, 4.7198)	3
<i>Conversions</i>	4
<i>Details</i>	6
<i>Harmonies</i>	12
<i>Previews</i>	24
<i>Color Blindness Simulation</i>	28
<i>CSS Examples</i>	31

Color

**HunterLab(13.1017, 4.6647,
4.7198)**

Conversions

Conversions Part 1

Format	Color
Hex	341E16
RGB	52, 30, 22
RGB Percent	20%, 12%, 9%
CMY	0.7961, 0.8823, 0.9137
CMYK	0.00, 0.42, 0.58, 0.80
HSL	16°, 41%, 15%
HSV	16°, 58%, 20%
XYZ	2.0253, 1.7165, 0.9837
YIQ	35.6660, 15.6800, 2.1760

Conversions

Conversions Part 2

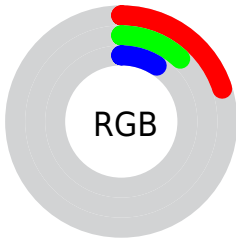
Format	Color
R_YB	52, 33, 22
Decimal	3415574
CIE Lab	13.92, 9.64, 9.94
CIE LCh	14, 13.843, 45.883
Yxy	1.7166, 0.4286, 0.3633
Android (android.graphics.Color)	4281605654 (0xFF341E16)
YUV	35.6660, -6.7373, 14.3249
Hunter-Lab	13.1017, 4.6647, 4.7198

Details

The HunterLab color **13.1017, 4.6647, 4.7198** is a dark color, and the websafe version is hex **333333**. A complement of this color would be **14.8989, -3.8925, -3.8160**, and the grayscale version is **13.1935, -0.7040, 0.7168**.

A 20% lighter version of the original color is **28.2437, 5.1134, 7.3108**, and 0.0000, NaN, NaN is the 20% darker color. If you saturate the color by 10%, you get **12.3170, 5.8264, 5.1781**, and if you desaturate by 10%, it is **13.9414, 3.5538, 4.1911**.

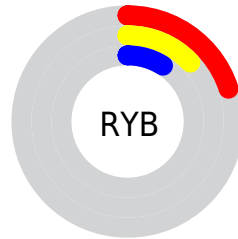
Distribution



Red (20%)

Green (12%)

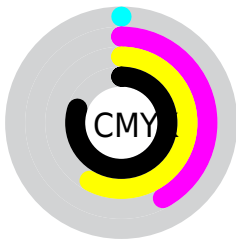
Blue (9%)



Red (20%)

Yellow (13%)

Blue (9%)

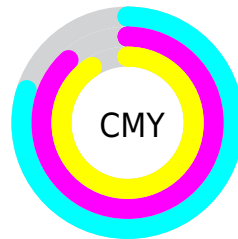


Cyan (0%)

Magenta (42%)

Yellow (58%)

Black (80%)



Cyan (80%)

Magenta (88%)

Yellow (91%)

Brightness & Saturation Gradients

These gradients show how the HunterLab color 13.1017, 4.6647, 4.7198 changes by changing the brightness by 10 percent. The first figure shows a shift by +10% for each color and the second figure -10%.

Similar to the brightness gradients but the following saturation gradients show a change of the HunterLab color 13.1017, 4.6647, 4.7198 by changing the saturation by 10% instead.

■ 13.1017, 4.6647,
4.7198

■ 13.1017, 4.6647,
4.7198

■ 105.1166, 4.5468,
15.0441

■ 6.5908, 6.0191,
4.6136

■ 28.2341, 5.2199,
7.1494

0.0000, NaN, NaN

0.0000, NaN, NaN

■ 37.1289, 5.3337,
8.2939

0.0000, NaN, NaN

■ 46.8005, 5.3626,
9.4203

0.0000, NaN, NaN

■ 57.1910, 5.3178,
10.5391

0.0000, NaN, NaN

0.0000, NaN, NaN

■ 68.2535, 5.2079,
11.6570

0.0000, NaN, NaN

■ 79.9496, 5.0395,

0.0000, NaN, NaN

12.7785

■ 92.2467, 4.8178,
13.9069

■ 13.1017, 4.6647,
4.7198

■ 13.1017, 4.6647,
4.7198

■ 12.3170, 5.8264,
5.1781

■ 13.9414, 3.5538,
4.1911

■ 11.5928, 7.0318,
5.5524

■ 14.8293, 2.4996,
3.6032

■ 10.9324, 8.2462,
5.8840

■ 15.7607, 1.5018,
2.9661

■ 10.3311, 9.3936,
6.3325

■ 16.7310, 0.5582,
2.2879

■ 10.2011, 9.6455,
6.4547

■ 17.7362, -0.3345,
1.5752

■ 18.7730, -1.1801,
0.8331

■ 19.8385, -1.9828,
0.0660

■ 20.9302, -2.7467,
-0.7230

■ 22.0459, -3.4757,
-1.5310

Harmonies

Analogous

The Analogous color harmony consists of three colors that are next to each other on the color wheel.



13.1020, 6.9192, 2.4430



13.1017, 4.6647, 4.7198



13.1020, 1.0920, 5.8237

Triad

The Triadic color harmony groups three colors that are evenly spaced from another and form a triangle on the color wheel.



13.1020, 4.6640, 4.7200



13.1020, -6.9434, 2.2675



13.1020, 1.3170, -7.6707

Complementary

The Complementary color scheme is a pair of colors which are on the opposite of each other on the color wheel.



13.1017, 4.6647, 4.7198



14.8989, -3.8925, -3.8160

Split Complementary

Split-complementary colors differ from the complementary color scheme. The scheme consists of three colors, the original color and two neighbors of the complement color.



13.1020, -2.4002, -7.7568



13.1017, 4.6647, 4.7198



13.1020, -6.8976, -1.2903

Square

The Square scheme is like the rectangle color scheme, but the four colors are evenly spaced on the color wheel.



13.1020, 4.6640, 4.7200



13.1020, -5.4523, 4.6226



13.1020, -5.3191, -5.1767



13.1020, 4.8446, -4.9667

Rectangle

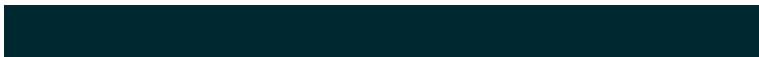
The Rectangle color scheme consists of four colors that form a rectangle on the color wheel.



13.1017, 4.6647, 4.7198



13.1020, -1.4253, 5.9329



13.1020, -5.3191, -5.1767



13.1020, 0.0419, -8.0278

Sweetspot

The Sweet Spot groups the original color and five complimentary colors.



13.1020, 4.6640, 4.7200



21.9463, 0.7623, 3.0274



12.1892, 10.2669, -3.9001



11.8679, 0.4326, 1.6549



60.6009, -3.2335, 3.2926



13.1868, -0.7036, 0.7165

Same Dimension

The Same Dimension uses a secret algorithm to generate beautiful new colors.



13.1020, 4.6640, 4.7200



15.6844, 8.4539, 7.0672



16.3241, -1.2371, 7.2801



9.5544, -0.1572, 0.8707



16.6777, 18.6183, 10.6027



42.0956, 53.7318, 26.8798

Inverse Universe

The Inverse Universe completely reimagines the original color for something new.



14.8989, -3.8925, -3.8160



18.5386, -5.3959, -6.5997



11.3898, 1.8535, -9.8611



9.7032, -0.8489, 0.1701



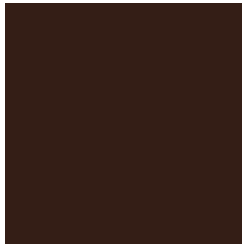
21.3482, -6.1742, -13.3551



54.5641, -14.0962, -37.7708

Previews

White Background



This preview shows how the HunterLab color 13.1017, 4.6647, 4.7198 looks on a white background.

Color Contrast Check

Large Text (above 18pt) WCAG AA ✓ Pass

Any Text WCAG AA ✓ Pass

Large Text (above 18pt) WCAG AAA ✓ Pass

Any Text WCAG AAA ✓ Pass

Black Background



Color Contrast Check

Large Text (above 18pt) WCAG AA × Fail

Any Text WCAG AA × Fail

Large Text (above 18pt) WCAG AAA × Fail

Any Text WCAG AAA × Fail

If you want to check with other color combinations, try the [Color Contrast Checker](#).

HunterLab 13.1017, 4.6647, 4.7198 Background



This preview shows how black text looks on a background with the HunterLab color 13.1017, 4.6647, 4.7198.



This preview shows how white text looks on a background with the HunterLab color 13.1017, 4.6647,

Color Blindness Simulation

Color vision deficiency is a very complex topic, and I could not describe the different causes any better than Wikipedia does, so if you want to learn more, you should check out their [article about color blindness](#).

Dichromacy



Original Color

13.1017, 4.6647, 4.7198

Protanopia

13.2629, -1.2395, 4.2877

Deuteranopia

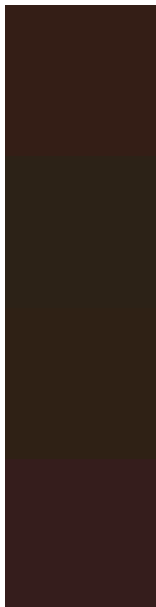
13.1669, 0.6292, 4.9297



Tritanopia

13.1702, 6.1580, 2.3874

Trichromacy



Original Color

13.1017, 4.6647, 4.7198

Protanomaly

13.1962, 0.7865, 4.5031

Deuteranomaly

13.2144, 1.8850, 4.9924

Tritanomaly

13.1128, 5.8728, 3.2155

Monochromacy



Original Color

13.1017, 4.6647, 4.7198

Achromatopsia

13.2823, -0.7087, 0.7217

Achromatomaly

13.1728, 0.9891, 2.2997

CSS Examples

Text

The CSS property to change the color of the text to HunterLab 13.1017, 4.6647, 4.7198 is called "color". The color property can be set on classes, ids or directly on the HTML element.

This example shows how text in the color `rgb(52, 30, 22)` looks like.

```
.text, #text, p{  
    color:rgb(52, 30, 22)  
}
```

If you want to add a text shadow in that color use the text-shadow property, you can generate a text shadow directly with our [CSS Text Shadow Generator](#).

Here you see how black text with a 4 pixel rgb(52, 30, 22) colored shadow looks like.

```
.shadow{ text-shadow: 4px 4px 2px rgb(52, 30, 22) }
```

Border

The CSS property to change the border of an element to HunterLab 13.1017, 4.6647, 4.7198 is called "border". The border property can be set on classes, ids or directly on the HTML element.

This example shows the color as border, it can be applied via the CSS property "border" or "border-color".

```
.border, #border, table{ border:4px solid rgb(52, 30, 22) }
```


If only the border color should be changed use the property `border-color`.

```
.border{ border-color:rgb(52, 30, 22) }
```

If you want to add a box shadow in that color use:

Here you see how a box with a 4 pixel `rgb(52, 30, 22)` colored shadow looks like.

```
.boxshadow{ -moz-box-shadow:4px 4px 4px  
4px rgb(52, 30, 22); -webkit-box-  
shadow:4px 4px 4px 4px rgb(52, 30, 22);  
box-shadow:4px 4px 4px 4px rgb(52, 30, 22)  
}
```

Background

The CSS property to change the background color of an element to HunterLab 13.1017, 4.6647, 4.7198 is called "background". The background property can be set on classes, ids or directly on the HTML element.

```
.background, #background, body{  
background: rgb(52, 30, 22) }
```

If only the background color should be changed can be used:

```
.background{ background-color: rgb(52, 30,  
22) }
```

This example shows the color as background, it is applied via the CSS property "background".

To optimize and compress your CSS code, you can use our [online CSS compressor and optimizer](#) based on csstidy. If you want to create a linear or radial gradient as background or border, check our [CSS Gradient Generator](#).

Hey! You found this booklet
interesting? Support Converting
Colors with the new Membership
Option!

The pro membership hides all ads, plus gives you
double the colors in the color bucket, and more
awesome pro features!

[Learn more, Memberships starting at \\$2.50/m!](#)

**Follow me
on Twitter!**

@ConvertingColor