

# Converting Colors

HunterLab(13.2822, 3.6891,  
5.0859)

Have a look what the booklet for  
HunterLab(13.2822, 3.6891, 5.0859)  
contains.

<b>HunterLab(13.1830, 3.8825, 5.0005)</b> .....	3
<i><b>Conversions</b></i> .....	4
<i><b>Details</b></i> .....	6
<i><b>Harmonies</b></i> .....	12
<i><b>Previews</b></i> .....	24
<i><b>Color Blindness Simulation</b></i> .....	28
<i><b>CSS Examples</b></i> .....	31

# Color

**HunterLab(13.1830, 3.8825,  
5.0005)**

# Conversions

## Conversions Part 1

<b>Format</b>	<b>Color</b>
Hex	331F15
RGB	51, 31, 21
RGB Percent	20%, 12%, 8%
CMY	0.8000, 0.8784, 0.9176
CMYK	0.00, 0.39, 0.59, 0.80
HSL	20°, 42%, 14%
HSV	20°, 59%, 20%
XYZ	1.9906, 1.7379, 0.9400
YIQ	35.8400, 15.1300, 1.1300

# Conversions

## Conversions Part 2

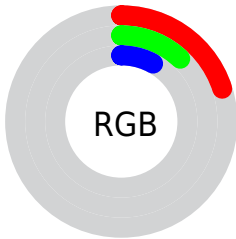
<b>Format</b>	<b>Color</b>
<b>R<sub>YB</sub></b>	51, 36, 21
Decimal	3350293
CIE Lab	14.05, 8.31, 10.77
CIE LCh	14, 13.605, 52.366
Yxy	1.7380, 0.4264, 0.3723
Android (android.graphics.Color)	4281540373 (0xFF331F15)
YUV	35.8400, -7.3161, 13.2953
Hunter-Lab	13.1830, 3.8825, 5.0005

# Details

The HunterLab color **13.1830, 3.8825, 5.0005** is a dark color, and the websafe version is hex **333333**. A complement of this color would be **14.0863, -3.1126, -4.5572**, and the grayscale version is **13.2507, -0.7070, 0.7199**.

A 20% lighter version of the original color is **28.3614, 4.2351, 7.7194**, and 0.0000, NaN, NaN is the 20% darker color. If you saturate the color by 10%, you get **12.4606, 4.8945, 5.4499**, and if you desaturate by 10%, it is **13.9498, 2.9247, 4.4683**.

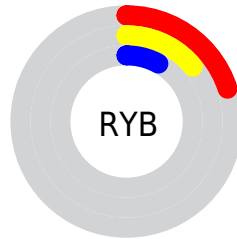
# Distribution



Red (20%)

Green (12%)

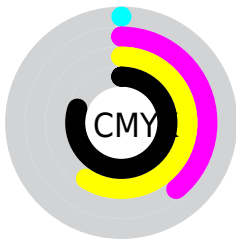
Blue (8%)



Red (20%)

Yellow (14%)

Blue (8%)

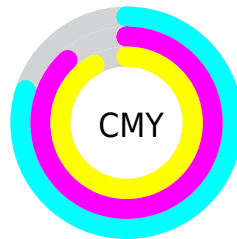


Cyan (0%)

Magenta (39%)

Yellow (59%)

Black (80%)



Cyan (80%)

Magenta (88%)

Yellow (92%)

# Brightness & Saturation Gradients

These gradients show how the HunterLab color 13.1830, 3.8825, 5.0005 changes by changing the brightness by 10 percent. The first figure shows a shift by +10% for each color and the second figure -10%.

Similar to the brightness gradients but the following saturation gradients show a change of the HunterLab color 13.1830, 3.8825, 5.0005 by changing the saturation by 10% instead.



■ 13.1830, 3.8825,  
5.0005

■ 13.1830, 3.8825,  
5.0005

■ 105.2792, 3.1187,  
15.8013

■ 6.6939, 5.0504,  
4.6857

■ 28.3391, 4.2577,  
7.5755

0.0000, NaN, NaN

0.0000, NaN, NaN

■ 37.2439, 4.2925,  
8.7796

0.0000, NaN, NaN

■ 46.9247, 4.2477,  
9.9599

0.0000, NaN, NaN

■ 57.3237, 4.1337,  
11.1281

0.0000, NaN, NaN

0.0000, NaN, NaN

■ 68.3944, 3.9584,  
12.2920

0.0000, NaN, NaN

■ 80.0981, 3.7278,

0.0000, NaN, NaN

13.4566

■ 92.4024, 3.4466,  
14.6255

■ 13.1830, 3.8825,  
5.0005

■ 13.1830, 3.8825,  
5.0005

■ 12.4606, 4.8945,  
5.4499

■ 13.9498, 2.9247,  
4.4683

■ 11.7862, 5.9581,  
5.8045

■ 14.7558, 2.0243,  
3.8634

■ 11.1597, 7.0385,  
6.1301

■ 15.5975, 1.1794,  
3.1955

■ 10.5765, 8.0772,  
6.5619

■ 16.4716, 0.3876,  
2.4729

■ 10.5108, 8.1959,  
6.6202

■ 17.3752, -0.3545,  
1.7027

■ 18.3055, -1.0505,  
0.8910

■ 19.2604, -1.7043,  
0.0428

■ 20.2378, -2.3196,  
-0.8378

■ 21.2360, -2.8998,  
-1.7472

# Harmonies

## Analogous

The Analogous color harmony consists of three colors that are next to each other on the color wheel.



13.1833, 6.4679, 3.0225



13.1830, 3.8825, 5.0005



13.1833, 0.2454, 5.8529

# Triad

The Triadic color harmony groups three colors that are evenly spaced from another and form a triangle on the color wheel.



13.1833, 3.8818, 5.0007



13.1833, -6.9881, 1.5777



13.1833, 2.0866, -7.1109

# Complementary

The Complementary color scheme is a pair of colors which are on the opposite of each other on the color wheel.



13.1830, 3.8825, 5.0005



14.0863, -3.1126, -4.5572

# Split Complementary

Split-complementary colors differ from the complementary color scheme. The scheme consists of three colors, the original color and two neighbors of the complement color.



13.1833, -1.6275, -7.8079



13.1830, 3.8825, 5.0005



13.1833, -6.6098, -2.0973

# Square

The Square scheme is like the rectangle color scheme, but the four colors are evenly spaced on the color wheel.



13.1833, 3.8818, 5.0007



13.1833, -5.8346, 4.1904



13.1833, -4.7380, -5.7732



13.1833, 5.3550, -4.0683



# Rectangle

The Rectangle color scheme consists of four colors that form a rectangle on the color wheel.



13.1830, 3.8825, 5.0005



13.1833, -2.1799, 5.7915



13.1833, -4.7380, -5.7732



13.1833, 0.8395, -7.6557

# Sweetspot

The Sweet Spot groups the original color and five complimentary colors.



13.1833, 3.8818, 5.0007



21.2119, 0.5113, 3.1982



11.8332, 9.9689, -3.0450



11.1535, 0.3102, 1.7276



59.5560, -3.1778, 3.2358



12.3795, -0.6605, 0.6726



# Same Dimension

The Same Dimension uses a secret algorithm to generate beautiful new colors.



13.1833, 3.8818, 5.0007



15.5366, 7.1079, 7.3080



16.4679, -1.9638, 7.5587



9.5906, -0.2186, 0.9109



17.4711, 16.4430, 11.0535



44.0248, 48.1411, 27.9707



# Inverse Universe

The Inverse Universe completely reimagines the original color for something new.



14.0863, -3.1126, -4.5572



16.9443, -4.0328, -7.8277



10.6642, 2.6992, -10.7944



9.6660, -0.7883, 0.1260



19.7601, -3.8374, -16.4147

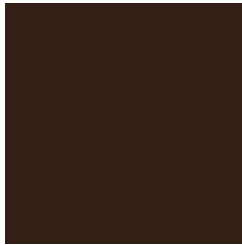


50.0919, -7.3425, -46.7602



# Previews

## White Background



This preview shows how the HunterLab color 13.1830, 3.8825, 5.0005 looks on a white background.

## Color Contrast Check

Large Text (above 18pt) WCAG AA ✓ Pass

Any Text WCAG AA ✓ Pass

Large Text (above 18pt) WCAG AAA ✓ Pass

Any Text WCAG AAA ✓ Pass



# Black Background



## Color Contrast Check

Large Text (above 18pt) WCAG AA × Fail

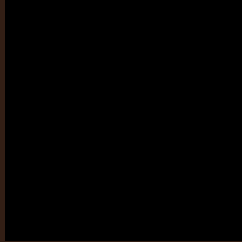
Any Text WCAG AA × Fail

Large Text (above 18pt) WCAG AAA × Fail

Any Text WCAG AAA × Fail

If you want to check with other color combinations, try the [Color Contrast Checker](#).

## HunterLab 13.1830, 3.8825, 5.0005 Background



This preview shows how black text looks on a background with the HunterLab color 13.1830, 3.8825, 5.0005.



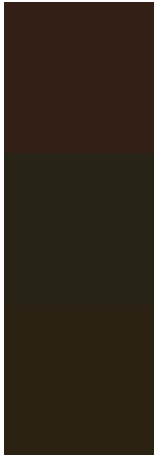
This preview shows how white text looks on a background with the HunterLab color 13.1830, 3.8825,



# Color Blindness Simulation

Color vision deficiency is a very complex topic, and I could not describe the different causes any better than Wikipedia does, so if you want to learn more, you should check out their [article about color blindness](#).

## Dichromacy



### Original Color

13.1830, 3.8825, 5.0005

### Protanopia

13.2474, -1.3246, 4.5119

### Deuteranopia

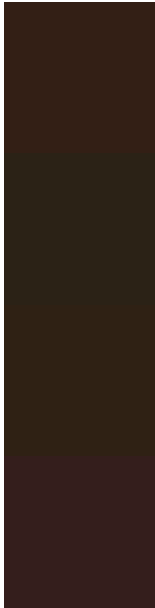
13.1531, 0.5549, 5.1313



## Tritanopia

13.2774, 5.5500, 2.1766

# Trichromacy



## Original Color

13.1830, 3.8825, 5.0005

## Protanomaly

13.0980, 0.4248, 4.6424

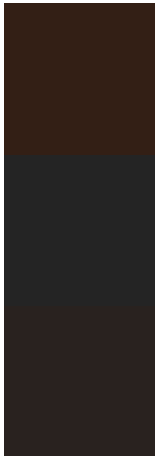
## Deuteranomaly

13.2006, 1.8123, 5.1933

## Tritanomaly

13.2002, 5.1624, 3.2898

# Monochromacy



## Original Color

13.1830, 3.8825, 5.0005

## Achromatopsia

13.2823, -0.7087, 0.7217

## Achromatomaly

13.0935, 0.7228, 2.2108

# CSS Examples

## Text

The CSS property to change the color of the text to HunterLab 13.1830, 3.8825, 5.0005 is called "color". The color property can be set on classes, ids or directly on the HTML element.

This example shows how text in the color `rgb(51, 31, 21)` looks like.

```
.text, #text, p{  
    color:rgb(51, 31, 21)  
}
```

If you want to add a text shadow in that color use the text-shadow property, you can generate a text shadow directly with our [CSS Text Shadow Generator](#).

Here you see how black text with a 4 pixel rgb(51, 31, 21) colored shadow looks like.

```
.shadow{ text-shadow: 4px 4px 2px rgb(51, 31, 21) }
```

## Border

The CSS property to change the border of an element to HunterLab 13.1830, 3.8825, 5.0005 is called "border". The border property can be set on classes, ids or directly on the HTML element.

This example shows the color as border, it can be applied via the CSS property "border" or "border-color".

```
.border, #border, table{ border:4px solid rgb(51, 31, 21) }
```



If only the border color should be changed use the property `border-color`.

```
.border{ border-color:rgb(51, 31, 21) }
```

If you want to add a box shadow in that color use:

Here you see how a box with a 4 pixel `rgb(51, 31, 21)` colored shadow looks like.

```
.boxshadow{ -moz-box-shadow:4px 4px 4px  
4px rgb(51, 31, 21); -webkit-box-  
shadow:4px 4px 4px 4px rgb(51, 31, 21);  
box-shadow:4px 4px 4px 4px rgb(51, 31, 21)  
}
```

# Background

The CSS property to change the background color of an element to HunterLab 13.1830, 3.8825, 5.0005 is called "background". The background property can be set on classes, ids or directly on the HTML element.

```
.background, #background, body{  
background: rgb(51, 31, 21) }
```

If only the background color should be changed can be used:

```
.background{ background-color: rgb(51, 31,  
21) }
```

This example shows the color as background, it is applied via the CSS property "background".

To optimize and compress your CSS code, you can use our [online CSS compressor and optimizer](#) based on csstidy. If you want to create a linear or radial gradient as background or border, check our [CSS Gradient Generator](#).

# Hey! You found this booklet interesting? Support Converting Colors with the new Membership Option!

The pro membership hides all ads, plus gives you double the colors in the color bucket, and more awesome pro features!

**[Learn more, Memberships starting at \\$2.50/m!](#)**

**Follow me  
on Twitter!**

@ConvertingColor