

Converting Colors

HunterLab(13.3300, 5.3643,
4.3923)

Have a look what the booklet for
HunterLab(13.3300, 5.3643, 4.3923)
contains.

HunterLab(13.3370, 5.4415, 4.4719)	3
<i>Conversions</i>	4
<i>Details</i>	6
<i>Harmonies</i>	12
<i>Previews</i>	24
<i>Color Blindness Simulation</i>	28
<i>CSS Examples</i>	31

Color

**HunterLab(13.3370, 5.4415,
4.4719)**

Conversions

Conversions Part 1

Format	Color
Hex	361E18
RGB	54, 30, 24
RGB Percent	21%, 12%, 9%
CMY	0.7882, 0.8823, 0.9059
CMYK	0.00, 0.44, 0.56, 0.79
HSL	12°, 38%, 15%
HSV	12°, 56%, 21%
XYZ	2.1505, 1.7788, 1.0941
YIQ	36.4920, 16.2300, 3.2220

Conversions

Conversions Part 2

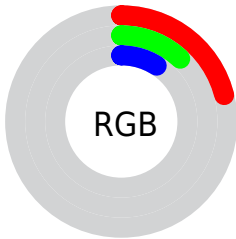
Format	Color
R_{YB}	54, 32, 24
Decimal	3546648
CIE Lab	14.28, 10.90, 9.05
CIE LCh	14, 14.164, 39.712
Yxy	1.7788, 0.4281, 0.3541
Android (android.graphics.Color)	4281736728 (0xFF361E18)
YUV	36.4920, -6.1586, 15.3545
Hunter-Lab	13.3370, 5.4415, 4.4719

Details

The HunterLab color **13.3370, 5.4415, 4.4719** is a dark color, and the websafe version is hex **333333**. A complement of this color would be **16.0446, -4.7215, -3.0927**, and the grayscale version is **13.4548, -0.7179, 0.7310**.

A 20% lighter version of the original color is **28.5089, 6.0932, 6.6301**, and 0.0000, NaN, NaN is the 20% darker color. If you saturate the color by 10%, you get **12.4688, 6.7804, 4.9567**, and if you desaturate by 10%, it is **14.2740, 4.1491, 3.9315**.

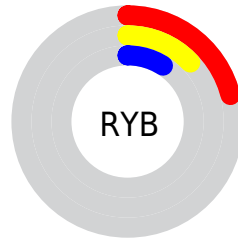
Distribution



Red (21%)

Green (12%)

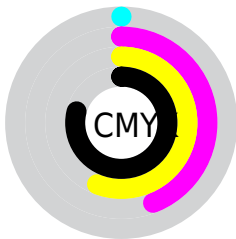
Blue (9%)



Red (21%)

Yellow (13%)

Blue (9%)

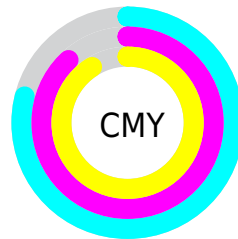


Cyan (0%)

Magenta (44%)

Yellow (56%)

Black (79%)



Cyan (79%)

Magenta (88%)

Yellow (91%)

Brightness & Saturation Gradients

These gradients show how the HunterLab color 13.3370, 5.4415, 4.4719 changes by changing the brightness by 10 percent. The first figure shows a shift by +10% for each color and the second figure -10%.

Similar to the brightness gradients but the following saturation gradients show a change of the HunterLab color 13.3370, 5.4415, 4.4719 by changing the saturation by 10% instead.

■ 13.3370, 5.4415,
4.4719

■ 13.3370, 5.4415,
4.4719

■ 105.5866, 5.8939,
14.2871

■ 6.8843, 6.5290,
4.8190

■ 28.5377, 6.1514,
6.7416

0.0000, NaN, NaN

0.0000, NaN, NaN

■ 37.4614, 6.3347,
7.8223

0.0000, NaN, NaN

■ 47.1596, 6.4288,
8.8914

0.0000, NaN, NaN

■ 57.5748, 6.4456,
9.9580

0.0000, NaN, NaN

0.0000, NaN, NaN

■ 68.6606, 6.3943,
11.0276

0.0000, NaN, NaN

■ 80.3787, 6.2817,

0.0000, NaN, NaN

12.1041

■ 92.6967, 6.1134,
13.1900

■ 13.3370, 5.4415,
4.4719

■ 13.3370, 5.4415,
4.4719

■ 12.4688, 6.7804,
4.9567

■ 14.2740, 4.1491,
3.9315

■ 11.6773, 8.1517,
5.3703

■ 15.2709, 2.9132,
3.3474

■ 10.9708, 9.5211,
5.7163

■ 16.3209, 1.7354,
2.7296

■ 10.3457, 10.7923,
6.1689

■ 17.4181, 0.6143,
2.0854

■ 10.0951, 11.3094,
6.4185

■ 18.5572, -0.4533,
1.4204

■ 19.7340, -1.4717,
0.7387

■ 20.9445, -2.4456,
0.0432

■ 22.1858, -3.3796,
-0.6637

■ 23.4550, -4.2781,
-1.3805

Harmonies

Analogous

The Analogous color harmony consists of three colors that are next to each other on the color wheel.



13.3373, 7.3530, 1.8548



13.3370, 5.4415, 4.4719



13.3373, 1.9393, 5.8126

Triad

The Triadic color harmony groups three colors that are evenly spaced from another and form a triangle on the color wheel.



13.3373, 5.4408, 4.4721



13.3373, -6.9425, 2.9344



13.3373, 0.5532, -8.1929

Complementary

The Complementary color scheme is a pair of colors which are on the opposite of each other on the color wheel.



13.3370, 5.4415, 4.4719



16.0446, -4.7215, -3.0927

Split Complementary

Split-complementary colors differ from the complementary color scheme. The scheme consists of three colors, the original color and two neighbors of the complement color.



13.3373, -3.1718, -7.6614



13.3370, 5.4415, 4.4719



13.3373, -7.2244, -0.5111

Square

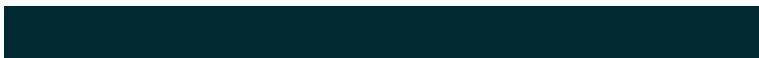
The Square scheme is like the rectangle color scheme, but the four colors are evenly spaced on the color wheel.



13.3373, 5.4408, 4.4721



13.3373, -5.1003, 5.0700



13.3373, -5.9194, -4.5723



13.3373, 4.3282, -5.8681

Rectangle

The Rectangle color scheme consists of four colors that form a rectangle on the color wheel.



13.3370, 5.4415, 4.4719



13.3373, -0.6753, 6.0856



13.3373, -5.9194, -4.5723



13.3373, -0.7494, -8.3546

Sweetspot

The Sweet Spot groups the original color and five complimentary colors.



13.3373, 5.4408, 4.4721



22.5498, 1.1463, 2.9421



12.8489, 10.5981, -4.8003



11.7652, 0.6132, 1.5453



60.6009, -3.2335, 3.2926



13.1868, -0.7036, 0.7165

Same Dimension

The Same Dimension uses a secret algorithm to generate beautiful new colors.



13.3373, 5.4408, 4.4721



15.8555, 9.8075, 6.7990



16.5136, -0.5290, 7.0636



10.2424, -0.0871, 0.9053



16.4608, 21.2489, 10.5150



41.1078, 59.1958, 26.3667

Inverse Universe

The Inverse Universe completely reimagines the original color for something new.



16.0446, -4.7215, -3.0927



20.1884, -6.7714, -5.3840



12.4428, 0.9828, -8.9454



10.4898, -0.9933, 0.2191



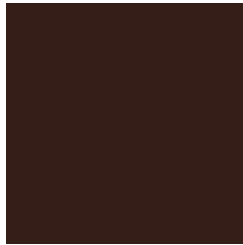
23.6467, -8.6640, -10.8532



59.9642, -20.8759, -29.8851

Previews

White Background



This preview shows how the HunterLab color 13.3370, 5.4415, 4.4719 looks on a white background.

Color Contrast Check

Large Text (above 18pt) WCAG AA ✓ Pass

Any Text WCAG AA ✓ Pass

Large Text (above 18pt) WCAG AAA ✓ Pass

Any Text WCAG AAA ✓ Pass

Black Background



Color Contrast Check

Large Text (above 18pt) WCAG AA × Fail

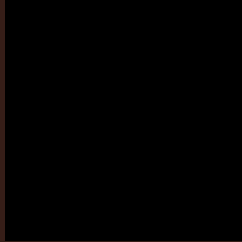
Any Text WCAG AA × Fail

Large Text (above 18pt) WCAG AAA × Fail

Any Text WCAG AAA × Fail

If you want to check with other color combinations, try the [Color Contrast Checker](#).

HunterLab 13.3370, 5.4415, 4.4719 Background



This preview shows how black text looks on a background with the HunterLab color 13.3370, 5.4415, 4.4719.



This preview shows how white text looks on a background with the HunterLab color 13.3370, 5.4415,

Color Blindness Simulation

Color vision deficiency is a very complex topic, and I could not describe the different causes any better than Wikipedia does, so if you want to learn more, you should check out their [article about color blindness](#).

Dichromacy



Original Color

13.3370, 5.4415, 4.4719

Protanopia

13.5411, -1.3387, 3.7804

Deuteranopia

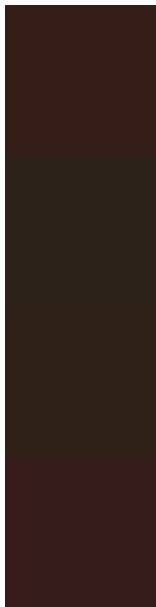
13.4142, 0.4029, 4.6899



Tritanopia

13.2738, 6.4633, 2.5021

Trichromacy



Original Color

13.3370, 5.4415, 4.4719

Protanomaly

13.2443, 1.0441, 3.8044

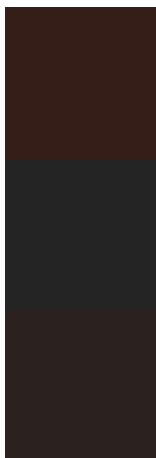
Deuteranomaly

13.3340, 2.3339, 4.6528

Tritanomaly

13.2168, 6.1815, 3.3240

Monochromacy



Original Color

13.3370, 5.4415, 4.4719

Achromatopsia

13.2823, -0.7087, 0.7217

Achromatomaly

13.2738, 1.3665, 2.0994

CSS Examples

Text

The CSS property to change the color of the text to HunterLab 13.3370, 5.4415, 4.4719 is called "color". The color property can be set on classes, ids or directly on the HTML element.

This example shows how text in the color `rgb(54, 30, 24)` looks like.

```
.text, #text, p{  
    color:rgb(54, 30, 24)  
}
```

If you want to add a text shadow in that color use the text-shadow property, you can generate a text shadow directly with our [CSS Text Shadow Generator](#).

Here you see how black text with a 4 pixel rgb(54, 30, 24) colored shadow looks like.

```
.shadow{ text-shadow: 4px 4px 2px rgb(54, 30, 24) }
```

Border

The CSS property to change the border of an element to HunterLab 13.3370, 5.4415, 4.4719 is called "border".

The border property can be set on classes, ids or directly on the HTML element.

This example shows the color as border, it can be applied via the CSS property "border" or "border-color".

```
.border, #border, table{ border:4px solid rgb(54, 30, 24) }
```


If only the border color should be changed use the property border-color.

```
.border{ border-color:rgb(54, 30, 24) }
```

If you want to add a box shadow in that color use:

Here you see how a box with a 4 pixel rgb(54, 30, 24) colored shadow looks like.

```
.boxshadow{ -moz-box-shadow:4px 4px 4px  
4px rgb(54, 30, 24); -webkit-box-  
shadow:4px 4px 4px 4px rgb(54, 30, 24);  
box-shadow:4px 4px 4px 4px rgb(54, 30, 24)  
}
```

Background

The CSS property to change the background color of an element to HunterLab 13.3370, 5.4415, 4.4719 is called "background". The background property can be set on classes, ids or directly on the HTML element.

```
.background, #background, body{  
background: rgb(54, 30, 24) }
```

If only the background color should be changed can be used:

```
.background{ background-color: rgb(54, 30,  
24) }
```

This example shows the color as background, it is applied via the CSS property "background".

To optimize and compress your CSS code, you can use our [online CSS compressor and optimizer](#) based on csstidy. If you want to create a linear or radial gradient as background or border, check our [CSS Gradient Generator](#).

Hey! You found this booklet interesting? Support Converting Colors with the new Membership Option!

The pro membership hides all ads, plus gives you double the colors in the color bucket, and more awesome pro features!

[Learn more, Memberships starting at \\$2.50/m!](#)

**Follow me
on Twitter!**

@ConvertingColor