

Converting Colors

HunterLab(13.5686, 6.4600,
3.1460)

Have a look what the booklet for
HunterLab(13.5686, 6.4600, 3.1460)
contains.

HunterLab(13.5444, 6.2682, 3.0789)	3
<i>Conversions</i>	4
<i>Details</i>	6
<i>Harmonies</i>	12
<i>Previews</i>	24
<i>Color Blindness Simulation</i>	28
<i>CSS Examples</i>	31

Color

**HunterLab(13.5444, 6.2682,
3.0789)**

Conversions

Conversions Part 1

Format	Color
Hex	371E1E
RGB	55, 30, 30
RGB Percent	22%, 12%, 12%
CMY	0.7843, 0.8823, 0.8824
CMYK	0.00, 0.45, 0.45, 0.78
HSL	0°, 29%, 17%
HSV	0°, 45%, 22%
XYZ	2.2742, 1.8345, 1.4625
YIQ	37.4750, 14.9000, 5.3000

Conversions

Conversions Part 2

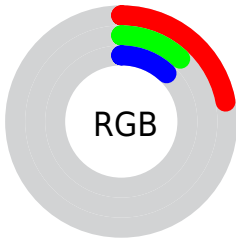
Format	Color
R_{YB}	55, 30, 30
Decimal	3612190
CIE Lab	14.59, 12.21, 5.21
CIE LCh	15, 13.271, 23.096
Yxy	1.8346, 0.4082, 0.3293
Android (android.graphics.Color)	4281802270 (0xFF371E1E)
YUV	37.4750, -3.6852, 15.3694
Hunter-Lab	13.5444, 6.2682, 3.0789

Details

The HunterLab color **13.5444, 6.2682, 3.0789** is a dark color, and the websafe version is hex **333333**. A complement of this color would be **18.1221, -6.1913, -0.7669**, and the grayscale version is **13.7620, -0.7343, 0.7477**.

A 20% lighter version of the original color is **28.7672, 7.2292, 4.5003**, and 0.0000, NaN, NaN is the 20% darker color. If you saturate the color by 10%, you get **12.4677, 8.0002, 3.5821**, and if you desaturate by 10%, it is **14.7253, 4.5634, 2.5932**.

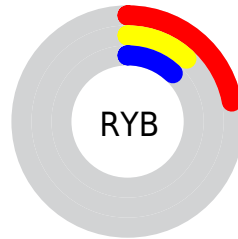
Distribution



Red (22%)

Green (12%)

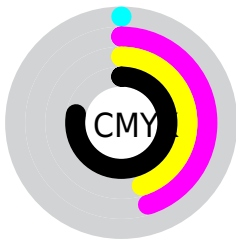
Blue (12%)



Red (22%)

Yellow (12%)

Blue (12%)

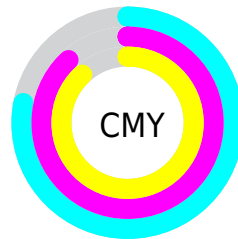


Cyan (0%)

Magenta (45%)

Yellow (45%)

Black (78%)



Cyan (78%)

Magenta (88%)

Yellow (88%)

Brightness & Saturation Gradients

These gradients show how the HunterLab color 13.5444, 6.2682, 3.0789 changes by changing the brightness by 10 percent. The first figure shows a shift by +10% for each color and the second figure -10%.

Similar to the brightness gradients but the following saturation gradients show a change of the HunterLab color 13.5444, 6.2682, 3.0789 by changing the saturation by 10% instead.

■ 13.5444, 6.2682,
3.0789

■ 13.5444, 6.2682,
3.0789

105.9991, 7.3089,
10.7823

■ 7.1316, 7.0781,
3.4141

■ 28.8047, 7.1365,
4.7025

0.0000, NaN, NaN

0.0000, NaN, NaN

■ 37.7537, 7.3914,
5.5200

0.0000, NaN, NaN

■ 47.4751, 7.5527,
6.3511

0.0000, NaN, NaN

■ 57.9120, 7.6333,
7.1989

0.0000, NaN, NaN

0.0000, NaN, NaN

■ 69.0181, 7.6426,
8.0651

0.0000, NaN, NaN

■ 80.7555, 7.5879,

0.0000, NaN, NaN

8.9508

93.0918, 7.4751,
9.8564

13.5444, 6.2682,
3.0789

13.5444, 6.2682,
3.0789

12.4677, 8.0002,
3.5821

14.7253, 4.5634,
2.5932

11.5112, 9.7214,
4.0899

15.9946, 2.9089,
2.1302

10.6932, 11.3654,
4.5818

17.3401, 1.3119,
1.6921

10.0174, 12.8729,
5.0383

18.7515, -0.2270,
1.2781

9.3383, 14.5553,
5.5532

20.2203, -1.7113,
0.8866

■ 9.0127, 15.4326,
5.8238

■ 21.7396, -3.1462,
0.5153

■ 23.3037, -4.5378,
0.1617

■ 24.9080, -5.8917,
-0.1764

■ 26.5486, -7.2133,
-0.5010

Harmonies

Analogous

The Analogous color harmony consists of three colors that are next to each other on the color wheel.



13.5447, 6.8753, -0.0803



13.5444, 6.2682, 3.0789



13.5447, 3.6995, 5.0243

Triad

The Triadic color harmony groups three colors that are evenly spaced from another and form a triangle on the color wheel.



13.5447, 6.2675, 3.0791



13.5447, -5.8369, 4.1318



13.5447, -1.5474, -7.5876

Complementary

The Complementary color scheme is a pair of colors which are on the opposite of each other on the color wheel.



13.5444, 6.2682, 3.0789



18.1221, -6.1913, -0.7669

Split Complementary

Split-complementary colors differ from the complementary color scheme. The scheme consists of three colors, the original color and two neighbors of the complement color.



13.5447, -4.6429, -5.6733



13.5444, 6.2682, 3.0789



13.5447, -6.9459, 1.5069

Square

The Square scheme is like the rectangle color scheme, but the four colors are evenly spaced on the color wheel.



13.5447, 6.2675, 3.0791



13.5447, -3.3390, 5.5167



13.5447, -6.5328, -2.1156



13.5447, 2.1070, -6.8471

Rectangle

The Rectangle color scheme consists of four colors that form a rectangle on the color wheel.



13.5444, 6.2682, 3.0789



13.5447, 1.3535, 5.6668



13.5447, -6.5328, -2.1156



13.5447, -2.6823, -7.2196

Sweetspot

The Sweet Spot groups the original color and five complimentary colors.



13.5447, 6.2675, 3.0791



22.5320, 1.5390, 2.1432



14.2008, 9.4566, -6.1746



11.7113, 0.8707, 1.1377



60.6009, -3.2335, 3.2926



13.1868, -0.7036, 0.7165

Same Dimension

The Same Dimension uses a secret algorithm to generate beautiful new colors.



13.5447, 6.2675, 3.0791



15.8111, 10.8337, 4.7734



16.1170, 1.2077, 5.4337



10.1224, 0.1189, 0.7709



15.0504, 25.7723, 9.7252



38.8676, 66.5602, 25.1153

Inverse Universe

The Inverse Universe completely reimagines the original color for something new.



18.1221, -6.1913, -0.7669



23.0792, -9.2308, -1.4281



14.9783, -1.5333, -5.1046



10.6149, -1.1949, 0.3660



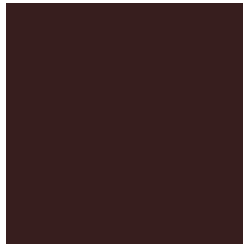
28.9621, -15.3533, -3.0567



74.7954, -39.6501, -7.8946

Previews

White Background



This preview shows how the HunterLab color 13.5444, 6.2682, 3.0789 looks on a white background.

Color Contrast Check

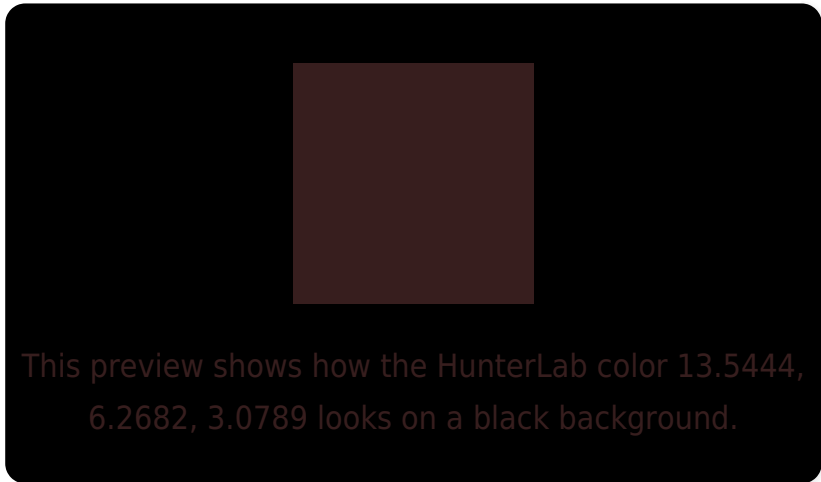
Large Text (above 18pt) WCAG AA ✓ Pass

Any Text WCAG AA ✓ Pass

Large Text (above 18pt) WCAG AAA ✓ Pass

Any Text WCAG AAA ✓ Pass

Black Background



Color Contrast Check

Large Text (above 18pt) WCAG AA × Fail

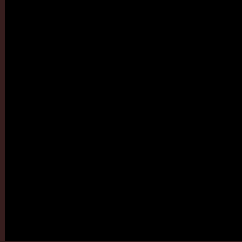
Any Text WCAG AA × Fail

Large Text (above 18pt) WCAG AAA × Fail

Any Text WCAG AAA × Fail

If you want to check with other color combinations, try the [Color Contrast Checker](#).

HunterLab 13.5444, 6.2682, 3.0789 Background



This preview shows how black text looks on a background with the HunterLab color 13.5444, 6.2682, 3.0789.

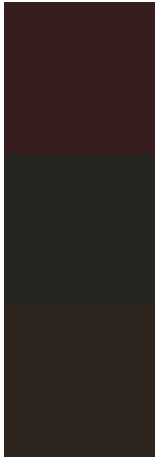


This preview shows how white text looks on a background with the HunterLab color 13.5444, 6.2682,

Color Blindness Simulation

Color vision deficiency is a very complex topic, and I could not describe the different causes any better than Wikipedia does, so if you want to learn more, you should check out their [article about color blindness](#).

Dichromacy



Original Color

13.5444, 6.2682, 3.0789

Protanopia

13.6747, -0.6043, 1.8541

Deuteranopia

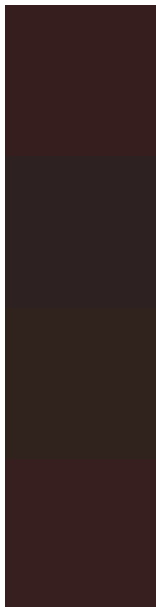
13.7329, 0.5511, 3.4533



Tritanopia

13.5833, 6.4609, 2.5184

Trichromacy



Original Color

13.5444, 6.2682, 3.0789

Protanomaly

13.4601, 2.0224, 1.9916

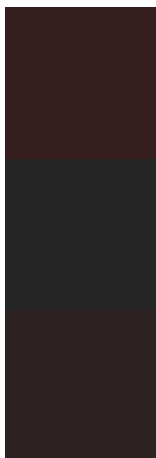
Deuteranomaly

13.6424, 2.4608, 3.3976

Tritanomaly

13.5636, 6.3632, 2.8026

Monochromacy



Original Color

13.5444, 6.2682, 3.0789

Achromatopsia

13.6016, -0.7257, 0.7390

Achromatomaly

13.3978, 1.8605, 1.5911

CSS Examples

Text

The CSS property to change the color of the text to HunterLab 13.5444, 6.2682, 3.0789 is called "color". The color property can be set on classes, ids or directly on the HTML element.

This example shows how text in the color `rgb(55, 30, 30)` looks like.

```
.text, #text, p{  
    color:rgb(55, 30, 30)  
}
```

If you want to add a text shadow in that color use the text-shadow property, you can generate a text shadow directly with our [CSS Text Shadow Generator](#).

Here you see how black text with a 4 pixel rgb(55, 30, 30) colored shadow looks like.

```
.shadow{ text-shadow: 4px 4px 2px rgb(55, 30, 30) }
```

Border

The CSS property to change the border of an element to HunterLab 13.5444, 6.2682, 3.0789 is called "border".

The border property can be set on classes, ids or directly on the HTML element.

This example shows the color as border, it can be applied via the CSS property "border" or "border-color".

```
.border, #border, table{ border:4px solid rgb(55, 30, 30) }
```


If only the border color should be changed use the property border-color.

```
.border{ border-color:rgb(55, 30, 30) }
```

If you want to add a box shadow in that color use:

Here you see how a box with a 4 pixel rgb(55, 30, 30) colored shadow looks like.

```
.boxshadow{ -moz-box-shadow:4px 4px 4px  
4px rgb(55, 30, 30); -webkit-box-  
shadow:4px 4px 4px 4px rgb(55, 30, 30);  
box-shadow:4px 4px 4px 4px rgb(55, 30, 30)  
}
```

Background

The CSS property to change the background color of an element to HunterLab 13.5444, 6.2682, 3.0789 is called "background". The background property can be set on classes, ids or directly on the HTML element.

```
.background, #background, body{  
background: rgb(55, 30, 30) }
```

If only the background color should be changed can be used:

```
.background{ background-color: rgb(55, 30,  
30) }
```

This example shows the color as background, it is applied via the CSS property "background".

To optimize and compress your CSS code, you can use our [online CSS compressor and optimizer](#) based on csstidy. If you want to create a linear or radial gradient as background or border, check our [CSS Gradient Generator](#).

Hey! You found this booklet interesting? Support Converting Colors with the new Membership Option!

The pro membership hides all ads, plus gives you double the colors in the color bucket, and more awesome pro features!

[Learn more, Memberships starting at \\$2.50/m!](#)

**Follow me
on Twitter!**

@ConvertingColor