

Converting Colors

HunterLab(13.5692, 9.4913,
5.8806)

Have a look what the booklet for
HunterLab(13.5692, 9.4913, 5.8806)
contains.

HunterLab(13.5741, 9.6047, 5.8414)	3
<i>Conversions</i>	4
<i>Details</i>	6
<i>Harmonies</i>	12
<i>Previews</i>	24
<i>Color Blindness Simulation</i>	28
<i>CSS Examples</i>	31

Color

**HunterLab(13.5741, 9.6047,
5.8414)**

Conversions

Conversions Part 1

Format	Color
Hex	3F1A13
RGB	63, 26, 19
RGB Percent	25%, 10%, 7%
CMY	0.7529, 0.8980, 0.9255
CMYK	0.00, 0.59, 0.70, 0.75
HSL	10°, 54%, 16%
HSV	10°, 70%, 25%
XYZ	2.5368, 1.8426, 0.8380
YIQ	36.2650, 24.2990, 5.6670

Conversions

Conversions Part 2

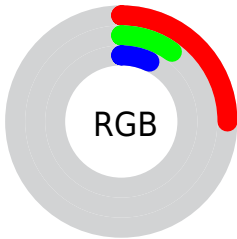
Format	Color
RYB	63, 27, 19
Decimal	4135443
CIELab	14.64, 17.36, 13.25
CIELCh	15, 21.841, 37.356
Yxy	1.8427, 0.4862, 0.3532
Android (android.graphics.Color)	4282325523 (0xFF3F1A13)
YUV	36.2650, -8.5116, 23.4466
Hunter-Lab	13.5741, 9.6047, 5.8414

Details

The HunterLab color **13.5741, 9.6047, 5.8414** is a dark color, and the websafe version is hex **330000**. A complement of this color would be **18.2359, -6.6603, -4.1692**, and the grayscale version is **13.3879, -0.7143, 0.7274**.

A 20% lighter version of the original color is **28.8004, 11.4033, 8.8576**, and 0.0000, NaN, NaN is the 20% darker color. If you saturate the color by 10%, you get **12.6909, 11.3136, 6.2862**, and if you desaturate by 10%, it is **14.5738, 7.8897, 5.3073**.

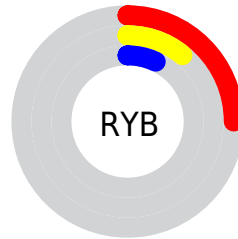
Distribution



Red (25%)

Green (10%)

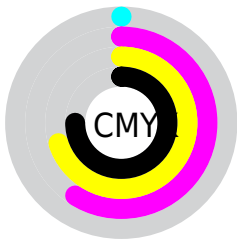
Blue (7%)



Red (25%)

Yellow (11%)

Blue (7%)

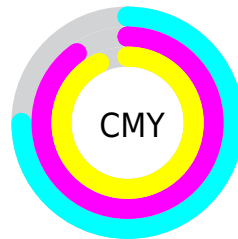


Cyan (0%)

Magenta (59%)

Yellow (70%)

Black (75%)



Cyan (75%)

Magenta (90%)

Yellow (93%)

Brightness & Saturation Gradients

These gradients show how the HunterLab color 13.5741, 9.6047, 5.8414 changes by changing the brightness by 10 percent. The first figure shows a shift by +10% for each color and the second figure -10%.

Similar to the brightness gradients but the following saturation gradients show a change of the HunterLab color 13.5741, 9.6047, 5.8414 by changing the saturation by 10% instead.

■ 13.5741, 9.6047,
5.8414

■ 13.5741, 9.6047,
5.8414

■ 106.0582, 12.9661,
18.0437

■ 7.1663, 10.2224,
5.0164

■ 28.8429, 11.0893,
8.8269

0.0000, NaN, NaN

0.0000, NaN, NaN

■ 37.7955, 11.6262,
10.2092

0.0000, NaN, NaN

■ 47.5203, 12.0540,
11.5506

0.0000, NaN, NaN

0.0000, NaN, NaN

■ 57.9602, 12.3872,
12.8669

0.0000, NaN, NaN

■ 69.0693, 12.6370,
14.1684

0.0000, NaN, NaN

■ 80.8094, 12.8123,

0.0000, NaN, NaN

15.4619

■ 93.1483, 12.9201,
16.7525

■ 13.5741, 9.6047,
5.8414

■ 13.5741, 9.6047,
5.8414

■ 12.6909, 11.3136,
6.2862

■ 14.5738, 7.8897,
5.3073

■ 11.9334, 12.9455,
6.6667

■ 15.6751, 6.2106,
4.7060

■ 11.2980, 14.3576,
7.1980

■ 16.8657, 4.5893,
4.0562

■ 11.2889, 14.3778,
7.2079

■ 18.1343, 3.0360,
3.3719

■ 19.4712, 1.5535,
2.6634

■ 20.8682, 0.1395,
1.9376

■ 22.3184, -1.2107,
1.1995

■ 23.8159, -2.5030,
0.4522

■ 25.3559, -3.7434,
-0.3020

Harmonies

Analogous

The Analogous color harmony consists of three colors that are next to each other on the color wheel.



13.5745, 12.5674, 2.0581



13.5741, 9.6047, 5.8414



13.5745, 3.9602, 7.9501

Triad

The Triadic color harmony groups three colors that are evenly spaced from another and form a triangle on the color wheel.



13.5745, 9.6037, 5.8416



13.5745, -9.7428, 4.2929



13.5745, 0.7691, -15.0655

Complementary

The Complementary color scheme is a pair of colors which are on the opposite of each other on the color wheel.



13.5741, 9.6047, 5.8414



18.2359, -6.6603, -4.1692

Split Complementary

Split-complementary colors differ from the complementary color scheme. The scheme consists of three colors, the original color and two neighbors of the complement color.



13.5745, -4.8500, -13.6073



13.5741, 9.6047, 5.8414



13.5745, -10.3001, -0.7277

Square

The Square scheme is like the rectangle color scheme, but the four colors are evenly spaced on the color wheel.



13.5745, 9.6037, 5.8416



13.5745, -6.9856, 7.0963



13.5745, -8.6659, -7.6491



13.5745, 6.9269, -11.0515

Rectangle

The Rectangle color scheme consists of four colors that form a rectangle on the color wheel.



13.5741, 9.6047, 5.8414



13.5745, -0.1939, 8.4572



13.5745, -8.6659, -7.6491



13.5745, -1.2481, -15.2207

Sweetspot

The Sweet Spot groups the original color and five complimentary colors.



13.5745, 9.6037, 5.8416



24.8767, 2.4041, 3.6448



13.4609, 16.3099, -8.1259



12.6856, 1.3148, 1.9094



62.6995, -3.3455, 3.4066



14.8260, -0.7911, 0.8055

Same Dimension

The Same Dimension uses a secret algorithm to generate beautiful new colors.



13.5745, 9.6037, 5.8416



15.6746, 16.3429, 8.4973



17.8468, 0.8546, 8.9653



10.9479, -0.0317, 0.9510



16.5538, 23.0384, 10.6037



40.8974, 62.3711, 26.2927

Inverse Universe

The Inverse Universe completely reimagines the original color for something new.



18.2359, -6.6603, -4.1692



22.7080, -9.0170, -6.8000



12.9012, 1.6262, -13.6336



11.2763, -1.1238, 0.2572



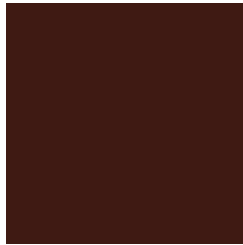
25.4066, -10.3419, -9.4308



63.7292, -25.1492, -25.3661

Previews

White Background



This preview shows how the HunterLab color 13.5741, 9.6047, 5.8414 looks on a white background.

Color Contrast Check

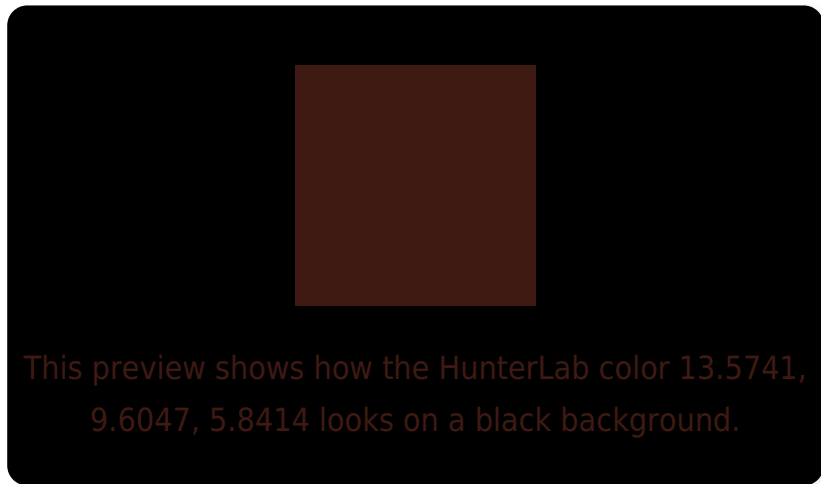
Large Text (above 18pt) WCAG AA ✓ Pass

Any Text WCAG AA ✓ Pass

Large Text (above 18pt) WCAG AAA ✓ Pass

Any Text WCAG AAA ✓ Pass

Black Background



Color Contrast Check

Large Text (above 18pt) WCAG AA × Fail

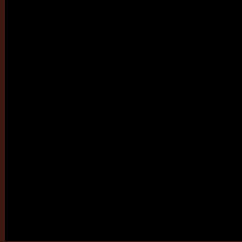
Any Text WCAG AA × Fail

Large Text (above 18pt) WCAG AAA × Fail

Any Text WCAG AAA × Fail

If you want to check with other color combinations, try the [Color Contrast Checker](#).

HunterLab 13.5741, 9.6047, 5.8414 Background



This preview shows how black text looks on a background with the HunterLab color 13.5741, 9.6047, 5.8414.

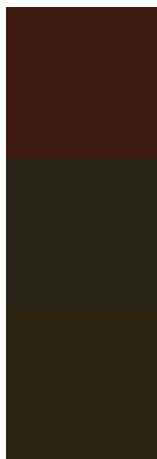


This preview shows how white text looks on a background with the HunterLab color 13.5741, 9.6047,

Color Blindness Simulation

Color vision deficiency is a very complex topic, and I could not describe the different causes any better than Wikipedia does, so if you want to learn more, you should check out their [article about color blindness](#).

Dichromacy



Original Color

13.5741, 9.6047, 5.8414

Protanopia

13.8546, -1.5415, 5.0412

Deuteranopia

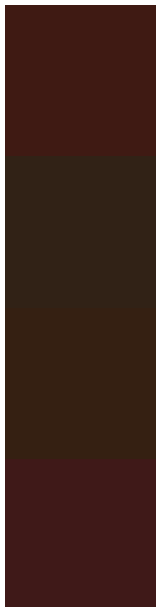
13.8078, 0.4546, 6.2391



Tritanopia

13.5320, 10.5542, 3.9800

Trichromacy



Original Color

13.5741, 9.6047, 5.8414

Protanomaly

13.6197, 2.1611, 5.1258

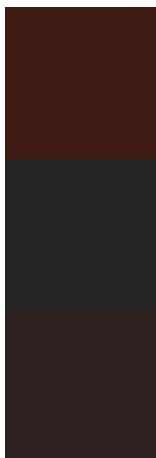
Deuteranomaly

13.5410, 3.9054, 5.9066

Tritanomaly

13.4832, 10.3272, 4.6891

Monochromacy



Original Color

13.5741, 9.6047, 5.8414

Achromatopsia

13.2823, -0.7087, 0.7217

Achromatomaly

13.0675, 2.7791, 2.5278

CSS Examples

Text

The CSS property to change the color of the text to HunterLab 13.5741, 9.6047, 5.8414 is called "color". The color property can be set on classes, ids or directly on the HTML element.

This example shows how text in the color `rgb(63, 26, 19)` looks like.

```
.text, #text, p{  
    color:rgb(63, 26, 19)  
}
```

If you want to add a text shadow in that color use the text-shadow property, you can generate a text shadow directly with our [CSS Text Shadow Generator](#).

Here you see how black text with a 4 pixel rgb(63, 26, 19) colored shadow looks like.

```
.shadow{ text-shadow: 4px 4px 2px rgb(63, 26, 19) }
```

Border

The CSS property to change the border of an element to HunterLab 13.5741, 9.6047, 5.8414 is called "border".

The border property can be set on classes, ids or directly on the HTML element.

This example shows the color as border, it can be applied via the CSS property "border" or "border-color".

```
.border, #border, table{ border:4px solid rgb(63, 26, 19) }
```


If only the border color should be changed use the property border-color.

```
.border{ border-color:rgb(63, 26, 19) }
```

If you want to add a box shadow in that color use:

Here you see how a box with a 4 pixel rgb(63, 26, 19) colored shadow looks like.

```
.boxshadow{ -moz-box-shadow:4px 4px 4px  
4px rgb(63, 26, 19); -webkit-box-  
shadow:4px 4px 4px 4px rgb(63, 26, 19);  
box-shadow:4px 4px 4px 4px rgb(63, 26, 19)  
}
```

Background

The CSS property to change the background color of an element to HunterLab 13.5741, 9.6047, 5.8414 is called "background". The background property can be set on classes, ids or directly on the HTML element.

```
.background, #background, body{  
background: rgb(63, 26, 19) }
```

If only the background color should be changed can be used:

```
.background{ background-color: rgb(63, 26,  
19) }
```

This example shows the color as background, it is applied via the CSS property "background".

To optimize and compress your CSS code, you can use our [online CSS compressor and optimizer](#) based on csstidy. If you want to create a linear or radial gradient as background or border, check our [CSS Gradient Generator](#).

Hey! You found this booklet interesting? Support Converting Colors with the new Membership Option!

The pro membership hides all ads, plus gives you double the colors in the color bucket, and more awesome pro features!

[Learn more, Memberships starting at \\$2.50/m!](#)

**Follow me
on Twitter!**

@ConvertingColor