

Converting Colors

HunterLab(13.9699, 10.5737,
4.1796)

Have a look what the booklet for
HunterLab(13.9699, 10.5737,
4.1796) contains.

HunterLab(13.9515, 10.8840, 4.1186)	3
<i>Conversions</i>	4
<i>Details</i>	6
<i>Harmonies</i>	12
<i>Previews</i>	24
<i>Color Blindness Simulation</i>	28
<i>CSS Examples</i>	31

Color

**HunterLab(13.9515, 10.8840,
4.1186)**

Conversions

Conversions Part 1

Format	Color
Hex	411A1C
RGB	65, 26, 28
RGB Percent	25%, 10%, 11%
CMY	0.7451, 0.8980, 0.8902
CMYK	0.00, 0.60, 0.57, 0.75
HSL	357°, 43%, 18%
HSV	357°, 60%, 25%
XYZ	2.7590, 1.9464, 1.3289
YIQ	37.8890, 22.6020, 8.8900

Conversions

Conversions Part 2

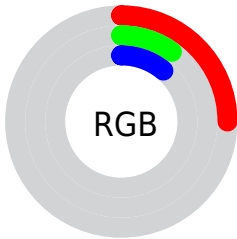
Format	Color
RYB	65, 26, 28
Decimal	4266524
CIELab	15.20, 19.16, 7.75
CIElCh	15, 20.673, 22.024
Yxy	1.9465, 0.4572, 0.3226
Android (android.graphics.Color)	4282456604 (0xFF411A1C)
YUV	37.8890, -4.8753, 23.7763
Hunter-Lab	13.9515, 10.8840, 4.1186

Details

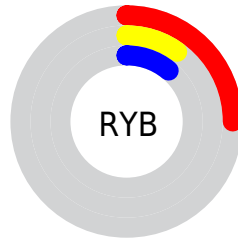
The HunterLab color **13.9515, 10.8840, 4.1186** is a dark color, and the websafe version is hex **330000**. A complement of this color would be **20.8785, -9.0628, -0.6485**, and the grayscale version is **13.8968, -0.7415, 0.7550**.

A 20% lighter version of the original color is **29.3364, 12.3110, 6.2446**, and 0.0000, NaN, NaN is the 20% darker color. If you saturate the color by 10%, you get **12.8997, 12.9138, 4.7246**, and if you desaturate by 10%, it is **15.1676, 8.7771, 3.5345**.

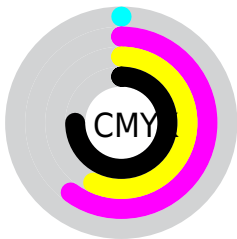
Distribution



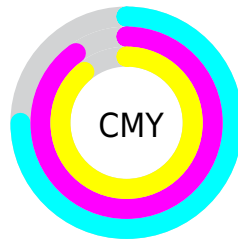
- Red (25%)
- Green (10%)
- Blue (11%)



- Red (25%)
- Yellow (10%)
- Blue (11%)



- Cyan (0%)
- Magenta (60%)
- Yellow (57%)
- Black (75%)



- Cyan (75%)
- Magenta (90%)
- Yellow (89%)

Brightness & Saturation Gradients

These gradients show how the HunterLab color 13.9515, 10.8840, 4.1186 changes by changing the brightness by 10 percent. The first figure shows a shift by +10% for each color and the second figure -10%.

Similar to the brightness gradients but the following saturation gradients show a change of the HunterLab color 13.9515, 10.8840, 4.1186 by changing the saturation by 10% instead.

■ 13.9515, 10.8840,
4.1186

■ 13.9515, 10.8840,
4.1186

■ 106.8045, 14.9771,
13.2060

■ 7.5904, 10.8836,
4.6468

■ 29.3272, 12.5528,
6.1588

0.0000, NaN, NaN

0.0000, NaN, NaN

■ 38.3252, 13.1777,
7.1482

0.0000, NaN, NaN

■ 48.0918, 13.6899,
8.1357

0.0000, NaN, NaN

■ 58.5707, 14.1040,
9.1277

0.0000, NaN, NaN

0.0000, NaN, NaN

■ 69.7164, 14.4315,
10.1285

0.0000, NaN, NaN

■ 81.4912, 14.6815,

0.0000, NaN, NaN

11.1407

93.8631, 14.8614,
12.1662

13.9515, 10.8840,
4.1186

13.9515, 10.8840,
4.1186

12.8997, 12.9138,
4.7246

15.1676, 8.7771,
3.5345

12.0339, 14.7623,
5.3223

16.5242, 6.6686,
2.9885

11.3392, 16.4032,
5.8480

18.0010, 4.5998,
2.4876

10.6356, 18.2813,
6.3402

19.5806, 2.5911,
2.0328

10.6354, 18.2820,
6.3404

21.2482, 0.6491,
1.6213

■ 22.9920, -1.2274,
1.2490

■ 24.8023, -3.0434,
0.9113

■ 26.6711, -4.8056,
0.6037

■ 28.5920, -6.5208,
0.3222

Harmonies

Analogous

The Analogous color harmony consists of three colors that are next to each other on the color wheel.



13.9519, 11.7926, -0.7594



13.9515, 10.8840, 4.1186



13.9519, 6.6261, 6.8195

Triad

The Triadic color harmony groups three colors that are evenly spaced from another and form a triangle on the color wheel.



13.9519, 10.8830, 4.1189



13.9519, -8.3485, 5.7573



13.9519, -2.2276, -13.9320

Complementary

The Complementary color scheme is a pair of colors which are on the opposite of each other on the color wheel.



13.9515, 10.8840, 4.1186



20.8785, -9.0628, -0.6485

Split Complementary

Split-complementary colors differ from the complementary color scheme. The scheme consists of three colors, the original color and two neighbors of the complement color.



13.9519, -6.8461, -10.1543



13.9515, 10.8840, 4.1186



13.9519, -9.9924, 2.1246

Square

The Square scheme is like the rectangle color scheme, but the four colors are evenly spaced on the color wheel.



13.9519, 10.8830, 4.1189



13.9519, -4.6068, 7.6718



13.9519, -9.4901, -3.7220



13.9519, 3.5882, -12.7013

Rectangle

The Rectangle color scheme consists of four colors that form a rectangle on the color wheel.



13.9515, 10.8840, 4.1186



13.9519, 2.7855, 7.8202



13.9519, -9.4901, -3.7220



13.9519, -3.9563, -13.1659

Sweetspot

The Sweet Spot groups the original color and five complimentary colors.



13.9519, 10.8830, 4.1189



25.6667, 3.0449, 2.5683



14.6890, 14.8256, -10.8751



13.3110, 1.7932, 1.3906



63.7533, -3.4017, 3.4638



15.6573, -0.8354, 0.8507

Same Dimension

The Same Dimension uses a secret algorithm to generate beautiful new colors.



13.9519, 10.8830, 4.1189



16.1391, 18.0019, 6.5246



17.0850, 3.8133, 7.2026



11.5749, 0.2005, 0.8426



15.9586, 27.3978, 9.7836



39.9207, 68.4288, 25.3040

Inverse Universe

The Inverse Universe completely reimagines the original color for something new.



13.9519, 10.8830, 4.1189



16.1391, 18.0019, 6.5246



16.5029, -2.4746, -7.8414



11.5749, 0.2005, 0.8426



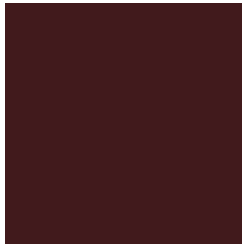
15.9586, 27.3978, 9.7836



39.9207, 68.4288, 25.3040

Previews

White Background



This preview shows how the HunterLab color 13.9515, 10.8840, 4.1186 looks on a white background.

Color Contrast Check

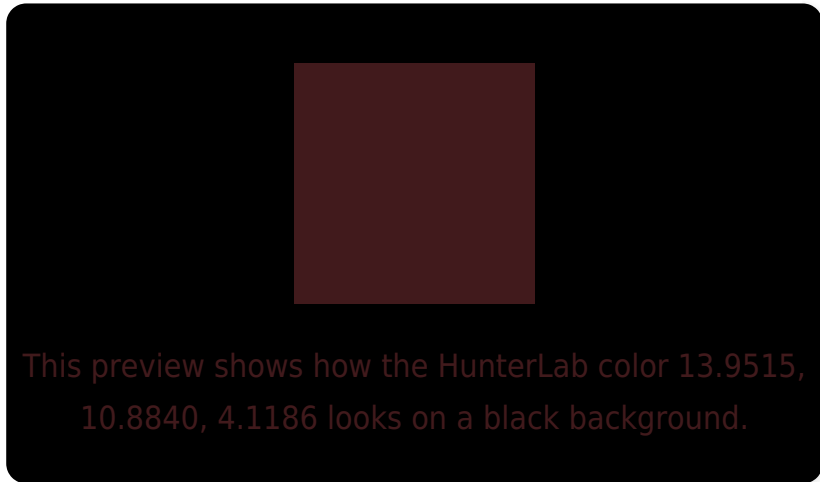
Large Text (above 18pt) WCAG AA ✓ Pass

Any Text WCAG AA ✓ Pass

Large Text (above 18pt) WCAG AAA ✓ Pass

Any Text WCAG AAA ✓ Pass

Black Background



Color Contrast Check

Large Text (above 18pt) WCAG AA × Fail

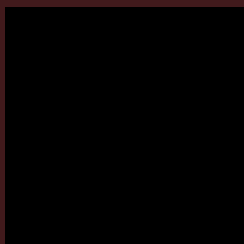
Any Text WCAG AA × Fail

Large Text (above 18pt) WCAG AAA × Fail

Any Text WCAG AAA × Fail

If you want to check with other color combinations, try the [Color Contrast Checker](#).

HunterLab 13.9515, 10.8840, 4.1186 Background



This preview shows how black text looks on a background with the HunterLab color 13.9515, 10.8840, 4.1186.



This preview shows how white text looks on a background with the HunterLab color 13.9515, 10.8840,

Color Blindness Simulation

Color vision deficiency is a very complex topic, and I could not describe the different causes any better than Wikipedia does, so if you want to learn more, you should check out their [article about color blindness](#).

Dichromacy



Original Color

13.9515, 10.8840, 4.1186

Protanopia

14.2757, -0.8663, 2.4961

Deuteranopia

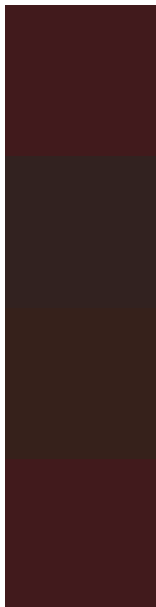
14.1494, 0.7255, 4.6364



Tritanopia

13.9515, 10.8840, 4.1186

Trichromacy



Original Color

13.9515, 10.8840, 4.1186

Protanomaly

13.8797, 3.3367, 2.7737

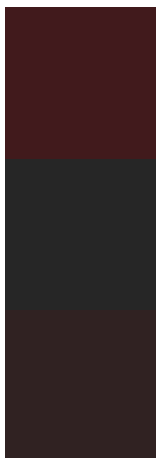
Deuteranomaly

13.9682, 4.4746, 4.2842

Tritanomaly

13.9515, 10.8840, 4.1186

Monochromacy



Original Color

13.9515, 10.8840, 4.1186

Achromatopsia

13.9221, -0.7428, 0.7564

Achromatomaly

13.7402, 2.9721, 1.9883

CSS Examples

Text

The CSS property to change the color of the text to HunterLab 13.9515, 10.8840, 4.1186 is called "color". The color property can be set on classes, ids or directly on the HTML element.

This example shows how text in the color `rgb(65, 26, 28)` looks like.

```
.text, #text, p{  
    color:rgb(65, 26, 28)  
}
```

If you want to add a text shadow in that color use the text-shadow property, you can generate a text shadow directly with our [CSS Text Shadow Generator](#).

Here you see how black text with a 4 pixel rgb(65, 26, 28) colored shadow looks like.

```
.shadow{ text-shadow: 4px 4px 2px rgb(65, 26, 28) }
```

Border

The CSS property to change the border of an element to HunterLab 13.9515, 10.8840, 4.1186 is called "border". The border property can be set on classes, ids or directly on the HTML element.

This example shows the color as border, it can be applied via the CSS property "border" or "border-color".

```
.border, #border, table{ border:4px solid rgb(65, 26, 28) }
```


If only the border color should be changed use the property `border-color`.

```
.border{ border-color:rgb(65, 26, 28) }
```

If you want to add a box shadow in that color use:

Here you see how a box with a 4 pixel `rgb(65, 26, 28)` colored shadow looks like.

```
.boxshadow{ -moz-box-shadow:4px 4px 4px  
4px rgb(65, 26, 28); -webkit-box-  
shadow:4px 4px 4px 4px rgb(65, 26, 28);  
box-shadow:4px 4px 4px 4px rgb(65, 26, 28)  
}
```

Background

The CSS property to change the background color of an element to HunterLab 13.9515, 10.8840, 4.1186 is called "background". The background property can be set on classes, ids or directly on the HTML element.

```
.background, #background, body{  
background: rgb(65, 26, 28) }
```

If only the background color should be changed can be used:

```
.background{ background-color: rgb(65, 26,  
28) }
```

This example shows the color as background, it is applied via the CSS property "background".

To optimize and compress your CSS code, you can use our [online CSS compressor and optimizer](#) based on csstidy. If you want to create a linear or radial gradient as background or border, check our [CSS Gradient Generator](#).

Hey! You found this booklet interesting? Support Converting Colors with the new Membership Option!

The pro membership hides all ads, plus gives you double the colors in the color bucket, and more awesome pro features!

[Learn more, Memberships starting at \\$2.50/m!](#)

**Follow me
on Twitter!**

@ConvertingColor