

# Converting Colors

HunterLab(13.9793, 5.5349,  
4.3316)

Have a look what the booklet for  
HunterLab(13.9793, 5.5349, 4.3316)  
contains.

<b>HunterLab(13.9747, 5.5003, 4.3081)</b> .....	3
<b><i>Conversions</i></b> .....	4
<b><i>Details</i></b> .....	6
<b><i>Harmonies</i></b> .....	12
<b><i>Previews</i></b> .....	24
<b><i>Color Blindness Simulation</i></b> .....	28
<b><i>CSS Examples</i></b> .....	31

# Color

**HunterLab(13.9747, 5.5003,  
4.3081)**

# Conversions

## Conversions Part 1

Format	Color
Hex	38201B
RGB	56, 32, 27
RGB Percent	22%, 13%, 11%
CMY	0.7804, 0.8745, 0.8941
CMYK	0.00, 0.43, 0.52, 0.78
HSL	10°, 35%, 16%
HSV	10°, 52%, 22%
XYZ	2.3452, 1.9529, 1.2903
YIQ	38.6060, 15.9090, 3.5330

# Conversions

## Conversions Part 2

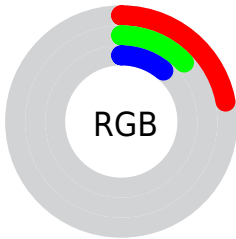
<b>Format</b>	<b>Color</b>
<b>R<sub>YB</sub></b>	56, 33, 27
Decimal	3678235
CIE Lab	15.24, 10.92, 8.26
CIE LCh	15, 13.690, 37.125
Yxy	1.9530, 0.4197, 0.3495
Android (android.graphics.Color)	4281868315 (0xFF38201B)
YUV	38.6060, -5.7218, 15.2545
Hunter-Lab	13.9747, 5.5003, 4.3081

# Details

The HunterLab color **13.9747, 5.5003, 4.3081** is a dark color, and the websafe version is hex **333333**. A complement of this color would be **16.9885, -5.0424, -2.6775**, and the grayscale version is **14.1314, -0.7540, 0.7678**.

A 20% lighter version of the original color is **29.2475, 6.1790, 6.3841**, and 0.0000, NaN, NaN is the 20% darker color. If you saturate the color by 10%, you get **13.0278, 6.9393, 4.8310**, and if you desaturate by 10%, it is **14.9965, 4.1101, 3.7394**.

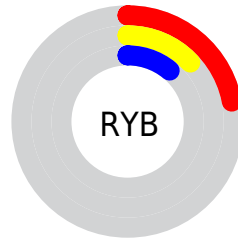
# Distribution



Red (22%)

Green (13%)

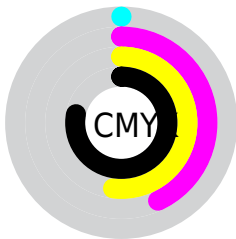
Blue (11%)



Red (22%)

Yellow (13%)

Blue (11%)

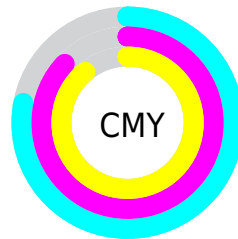


Cyan (0%)

Magenta (43%)

Yellow (52%)

Black (78%)



Cyan (78%)

Magenta (87%)

Yellow (89%)

# Brightness & Saturation Gradients

These gradients show how the HunterLab color 13.9747, 5.5003, 4.3081 changes by changing the brightness by 10 percent. The first figure shows a shift by +10% for each color and the second figure -10%.

Similar to the brightness gradients but the following saturation gradients show a change of the HunterLab color 13.9747, 5.5003, 4.3081 by changing the saturation by 10% instead.



■ 13.9747, 5.5003,  
4.3081

■ 13.9747, 5.5003,  
4.3081

106.8501, 5.8911,  
13.6766

■ 7.6155, 5.8387,  
4.9118

■ 29.3569, 6.1875,  
6.4337

0.0000, NaN, NaN

0.0000, NaN, NaN

■ 38.3577, 6.3628,  
7.4582

0.0000, NaN, NaN

■ 48.1268, 6.4500,  
8.4773

0.0000, NaN, NaN

■ 58.6081, 6.4609,  
9.4986

0.0000, NaN, NaN

0.0000, NaN, NaN

■ 69.7561, 6.4043,  
10.5266

0.0000, NaN, NaN

■ 81.5329, 6.2871,

0.0000, NaN, NaN

11.5643

■ 93.9068, 6.1145,  
12.6139

■ 13.9747, 5.5003,  
4.3081

■ 13.9747, 5.5003,  
4.3081

■ 13.0278, 6.9393,  
4.8310

■ 14.9965, 4.1101,  
3.7394

■ 12.1648, 8.4116,  
5.2918

■ 16.0830, 2.7790,  
3.1362

■ 11.3971, 9.8861,  
5.6721

■ 17.2269, 1.5085,  
2.5078

■ 10.7271, 11.2800,  
6.0773

■ 18.4213, 0.2967,  
1.8608

■ 10.2490, 12.2944,  
6.5306

■ 19.6607, -0.8601,  
1.1997

■ 20.9403, -1.9667,  
0.5277

■ 22.2559, -3.0281,  
-0.1528

■ 23.6043, -4.0494,  
-0.8404

■ 24.9824, -5.0351,  
-1.5339

# Harmonies

## Analogous

The Analogous color harmony consists of three colors that are next to each other on the color wheel.



13.9750, 7.1777, 1.5873



13.9747, 5.5003, 4.3081



13.9750, 2.1773, 5.7306

# Triad

The Triadic color harmony groups three colors that are evenly spaced from another and form a triangle on the color wheel.



13.9750, 5.4996, 4.3083



13.9750, -6.8047, 3.1793



13.9750, 0.1619, -7.9318

# Complementary

The Complementary color scheme is a pair of colors which are on the opposite of each other on the color wheel.



13.9747, 5.5003, 4.3081



16.9885, -5.0424, -2.6775

# Split Complementary

Split-complementary colors differ from the complementary color scheme. The scheme consists of three colors, the original color and two neighbors of the complement color.



13.9750, -3.4479, -7.1777



13.9747, 5.5003, 4.3081



13.9750, -7.2227, -0.1197

# Square

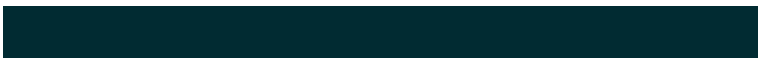
The Square scheme is like the rectangle color scheme, but the four colors are evenly spaced on the color wheel.



13.9750, 5.4996, 4.3083



13.9750, -4.8487, 5.2092



13.9750, -6.0576, -4.0608



13.9750, 3.8915, -5.9110



# Rectangle

The Rectangle color scheme consists of four colors that form a rectangle on the color wheel.



13.9747, 5.5003, 4.3081



13.9750, -0.3818, 6.0448



13.9750, -6.0576, -4.0608



13.9750, -1.1073, -8.0016

# Sweetspot

The Sweet Spot groups the original color and five complimentary colors.



13.9750, 5.4996, 4.3083



23.4258, 1.1828, 2.8778



13.6570, 10.3973, -5.0835



12.4958, 0.6817, 1.5667



61.6487, -3.2894, 3.3495



14.0024, -0.7471, 0.7608



# Same Dimension

The Same Dimension uses a secret algorithm to generate beautiful new colors.



13.9750, 5.4996, 4.3083



16.7345, 9.7770, 6.5680



17.0295, -0.2555, 6.8788



10.2258, -0.0587, 0.8868



16.2193, 21.9825, 10.3791



40.5973, 60.8210, 26.0807



# Inverse Universe

The Inverse Universe completely reimagines the original color for something new.



16.9885, -5.0424, -2.6775



21.5487, -7.3368, -4.6513



13.4947, 0.4197, -8.1155



10.5070, -1.0211, 0.2394



24.3592, -9.6147, -9.6915

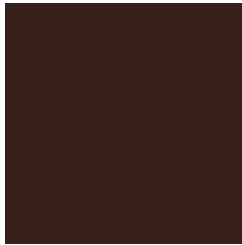


61.9462, -23.5527, -26.5839



# Previews

## White Background



This preview shows how the HunterLab color 13.9747, 5.5003, 4.3081 looks on a white background.

## Color Contrast Check

Large Text (above 18pt) WCAG AA ✓ Pass

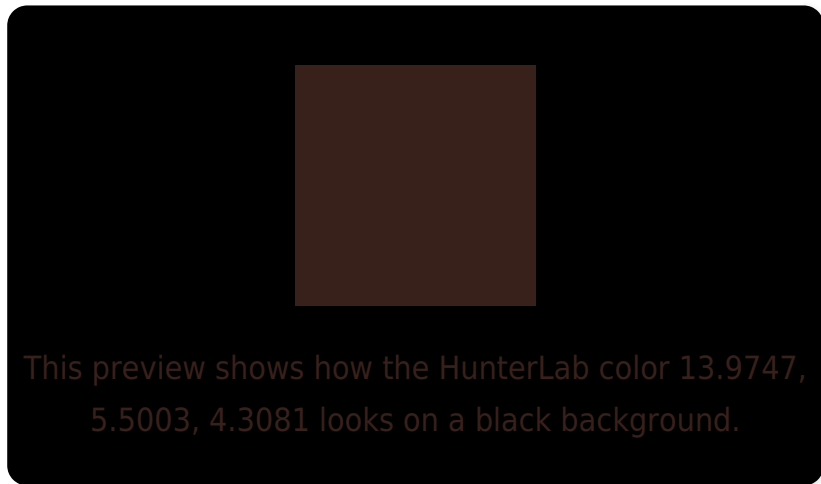
Any Text WCAG AA ✓ Pass

Large Text (above 18pt) WCAG AAA ✓ Pass

Any Text WCAG AAA ✓ Pass



# Black Background



## Color Contrast Check

Large Text (above 18pt) WCAG AA × Fail

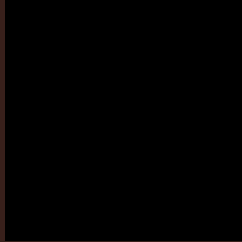
Any Text WCAG AA × Fail

Large Text (above 18pt) WCAG AAA × Fail

Any Text WCAG AAA × Fail

If you want to check with other color combinations, try the [Color Contrast Checker](#).

# HunterLab 13.9747, 5.5003, 4.3081 Background



This preview shows how black text looks on a background with the HunterLab color 13.9747, 5.5003, 4.3081.



This preview shows how white text looks on a background with the HunterLab color 13.9747, 5.5003,



# Color Blindness Simulation

Color vision deficiency is a very complex topic, and I could not describe the different causes any better than Wikipedia does, so if you want to learn more, you should check out their [article about color blindness](#).

## Dichromacy



### Original Color

13.9747, 5.5003, 4.3081

### Protanopia

14.1993, -1.2866, 3.5982

### Deuteranopia

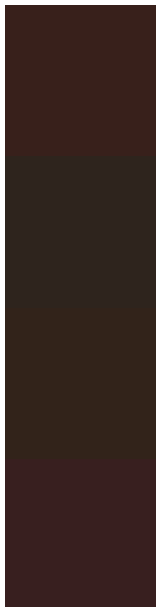
14.0661, 0.4438, 4.5559



## Tritanopia

13.8944, 6.4583, 2.5349

# Trichromacy



## Original Color

13.9747, 5.5003, 4.3081

## Protanomaly

13.8971, 1.1037, 3.6235

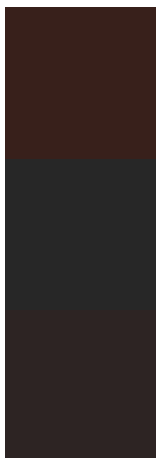
## Deuteranomaly

13.9813, 2.3804, 4.5125

## Tritanomaly

13.8552, 6.2636, 3.0998

# Monochromacy



## Original Color

13.9747, 5.5003, 4.3081

## Achromatopsia

14.2438, -0.7600, 0.7739

## Achromatomaly

13.9319, 1.4543, 1.8433

# CSS Examples

## Text

The CSS property to change the color of the text to HunterLab 13.9747, 5.5003, 4.3081 is called "color". The color property can be set on classes, ids or directly on the HTML element.

This example shows how text in the color `rgb(56, 32, 27)` looks like.

```
.text, #text, p{  
    color:rgb(56, 32, 27)  
}
```

If you want to add a text shadow in that color use the text-shadow property, you can generate a text shadow directly with our [CSS Text Shadow Generator](#).

Here you see how black text with a 4 pixel rgb(56, 32, 27) colored shadow looks like.

```
.shadow{ text-shadow: 4px 4px 2px rgb(56, 32, 27) }
```

## Border

The CSS property to change the border of an element to HunterLab 13.9747, 5.5003, 4.3081 is called "border". The border property can be set on classes, ids or directly on the HTML element.

This example shows the color as border, it can be applied via the CSS property "border" or "border-color".

```
.border, #border, table{ border:4px solid rgb(56, 32, 27) }
```



If only the border color should be changed use the property border-color.

```
.border{ border-color:rgb(56, 32, 27) }
```

If you want to add a box shadow in that color use:

Here you see how a box with a 4 pixel rgb(56, 32, 27) colored shadow looks like.

```
.boxshadow{ -moz-box-shadow:4px 4px 4px  
4px rgb(56, 32, 27); -webkit-box-  
shadow:4px 4px 4px 4px rgb(56, 32, 27);  
box-shadow:4px 4px 4px 4px rgb(56, 32, 27)  
}
```

# Background

The CSS property to change the background color of an element to HunterLab 13.9747, 5.5003, 4.3081 is called "background". The background property can be set on classes, ids or directly on the HTML element.

```
.background, #background, body{  
background: rgb(56, 32, 27) }
```

If only the background color should be changed can be used:

```
.background{ background-color: rgb(56, 32,  
27) }
```

This example shows the color as background, it is applied via the CSS property "background".

To optimize and compress your CSS code, you can use our [online CSS compressor and optimizer](#) based on csstidy. If you want to create a linear or radial gradient as background or border, check our [CSS Gradient Generator](#).

# Hey! You found this booklet interesting? Support Converting Colors with the new Membership Option!

The pro membership hides all ads, plus gives you double the colors in the color bucket, and more awesome pro features!

**[Learn more, Memberships starting at \\$2.50/m!](#)**

**Follow me  
on Twitter!**

@ConvertingColor