

Converting Colors

HunterLab(14.0566, 6.2891,
4.8092)

Have a look what the booklet for
HunterLab(14.0566, 6.2891, 4.8092)
contains.

HunterLab(13.9632, 6.3778, 4.8105)	3
<i>Conversions</i>	4
<i>Details</i>	6
<i>Harmonies</i>	12
<i>Previews</i>	24
<i>Color Blindness Simulation</i>	28
<i>CSS Examples</i>	31

Color

**HunterLab(13.9632, 6.3778,
4.8105)**

Conversions

Conversions Part 1

Format	Color
Hex	3A1F19
RGB	58, 31, 25
RGB Percent	23%, 12%, 10%
CMY	0.7725, 0.8784, 0.9020
CMYK	0.00, 0.47, 0.57, 0.77
HSL	11°, 40%, 16%
HSV	11°, 57%, 23%
XYZ	2.4104, 1.9497, 1.1690
YIQ	38.3890, 18.0180, 3.8580

Conversions

Conversions Part 2

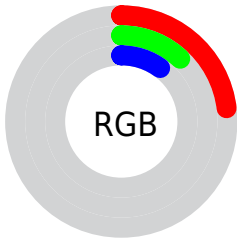
Format	Color
R_{YB}	58, 32, 25
Decimal	3809049
CIE Lab	15.22, 12.32, 9.71
CIE LCh	15, 15.689, 38.230
Yxy	1.9498, 0.4359, 0.3526
Android (android.graphics.Color)	4281999129 (0xFF3A1F19)
YUV	38.3890, -6.6008, 17.1988
Hunter-Lab	13.9632, 6.3778, 4.8105

Details

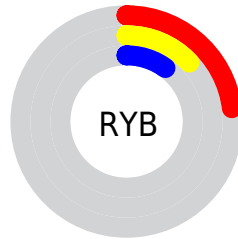
The HunterLab color **13.9632, 6.3778, 4.8105** is a dark color, and the websafe version is hex **330000**. A complement of this color would be **17.2279, -5.3593, -3.2544**, and the grayscale version is **14.0639, -0.7504, 0.7641**.

A 20% lighter version of the original color is **29.2836, 7.4104, 7.1015**, and 0.0000, NaN, NaN is the 20% darker color. If you saturate the color by 10%, you get **13.0287, 7.8794, 5.3215**, and if you desaturate by 10%, it is **14.9797, 4.9207, 4.2401**.

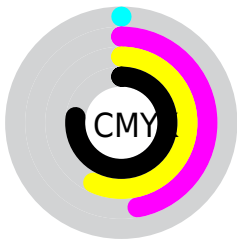
Distribution



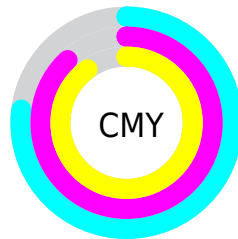
- Red (23%)
- Green (12%)
- Blue (10%)



- Red (23%)
- Yellow (13%)
- Blue (10%)



- Cyan (0%)
- Magenta (47%)
- Yellow (57%)
- Black (77%)



- Cyan (77%)
- Magenta (88%)
- Yellow (90%)

Brightness & Saturation Gradients

These gradients show how the HunterLab color 13.9632, 6.3778, 4.8105 changes by changing the brightness by 10 percent. The first figure shows a shift by +10% for each color and the second figure -10%.

Similar to the brightness gradients but the following saturation gradients show a change of the HunterLab color 13.9632, 6.3778, 4.8105 by changing the saturation by 10% instead.

■ 13.9632, 6.3778,
4.8105

■ 13.9632, 6.3778,
4.8105

■ 106.8275, 7.4239,
14.9861

■ 7.6031, 6.6578,
5.3221

■ 29.3422, 7.2434,
7.1828

0.0000, NaN, NaN

0.0000, NaN, NaN

■ 38.3416, 7.4985,
8.3080

0.0000, NaN, NaN

■ 48.1095, 7.6606,
9.4183

0.0000, NaN, NaN

■ 58.5896, 7.7423,
10.5232

0.0000, NaN, NaN

0.0000, NaN, NaN

■ 69.7364, 7.7529,
11.6289

0.0000, NaN, NaN

■ 81.5122, 7.6996,

0.0000, NaN, NaN

12.7396

■ 93.8851, 7.5884,
13.8579

■ 13.9632, 6.3778,
4.8105

■ 13.9632, 6.3778,
4.8105

■ 13.0287, 7.8794,
5.3215

■ 14.9797, 4.9207,
4.2401

■ 12.1859, 9.4038,
5.7544

■ 16.0674, 3.5230,
3.6244

■ 11.4451, 10.9049,
6.1127

■ 17.2178, 2.1886,
2.9748

■ 10.8025, 12.2681,
6.5875

■ 18.4237, 0.9172,
2.2998

■ 10.6238, 12.6511,
6.7678

■ 19.6786, -0.2945,
1.6054

■ 20.9772, -1.4509,
0.8960

■ 22.3151, -2.5575,
0.1746

■ 23.6883, -3.6194,
-0.5564

■ 25.0936, -4.6416,
-1.2957

Harmonies

Analogous

The Analogous color harmony consists of three colors that are next to each other on the color wheel.



13.9636, 8.4370, 1.8419



13.9632, 6.3778, 4.8105



13.9636, 2.4619, 6.3090

Triad

The Triadic color harmony groups three colors that are evenly spaced from another and form a triangle on the color wheel.



13.9636, 6.3770, 4.8107



13.9636, -7.6374, 3.3787



13.9636, 0.4602, -9.5071

Complementary

The Complementary color scheme is a pair of colors which are on the opposite of each other on the color wheel.



13.9632, 6.3778, 4.8105



17.2279, -5.3593, -3.2544

Split Complementary

Split-complementary colors differ from the complementary color scheme. The scheme consists of three colors, the original color and two neighbors of the complement color.



13.9636, -3.6878, -8.7196



13.9632, 6.3778, 4.8105



13.9636, -8.0363, -0.4159

Square

The Square scheme is like the rectangle color scheme, but the four colors are evenly spaced on the color wheel.



13.9636, 6.3770, 4.8107



13.9636, -5.5121, 5.6422



13.9636, -6.6765, -5.0499



13.9636, 4.7603, -6.9571

Rectangle

The Rectangle color scheme consists of four colors that form a rectangle on the color wheel.



13.9632, 6.3778, 4.8105



13.9636, -0.4890, 6.6389



13.9636, -6.6765, -5.0499



13.9636, -1.0008, -9.6359

Sweetspot

The Sweet Spot groups the original color and five complimentary colors.



13.9636, 6.3770, 4.8107



24.0865, 1.3612, 3.1108



13.5915, 11.9862, -5.8464



12.4347, 0.7325, 1.6250



61.6487, -3.2894, 3.3495



14.0024, -0.7471, 0.7608

Same Dimension

The Same Dimension uses a secret algorithm to generate beautiful new colors.



13.9636, 6.3770, 4.8107



16.6304, 11.2609, 7.2697



17.3285, -0.0719, 7.5296



10.2314, -0.0684, 0.8931



16.2989, 21.7388, 10.4239



40.7633, 60.2895, 26.1736

Inverse Universe

The Inverse Universe completely reimagines the original color for something new.



17.2279, -5.3593, -3.2544



21.7896, -7.6606, -5.5613



13.3189, 0.7554, -9.5993



10.5011, -1.0116, 0.2325



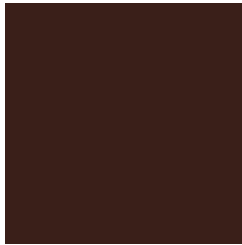
24.1154, -9.2917, -10.0841



61.2678, -22.6436, -27.6984

Previews

White Background



This preview shows how the HunterLab color 13.9632, 6.3778, 4.8105 looks on a white background.

Color Contrast Check

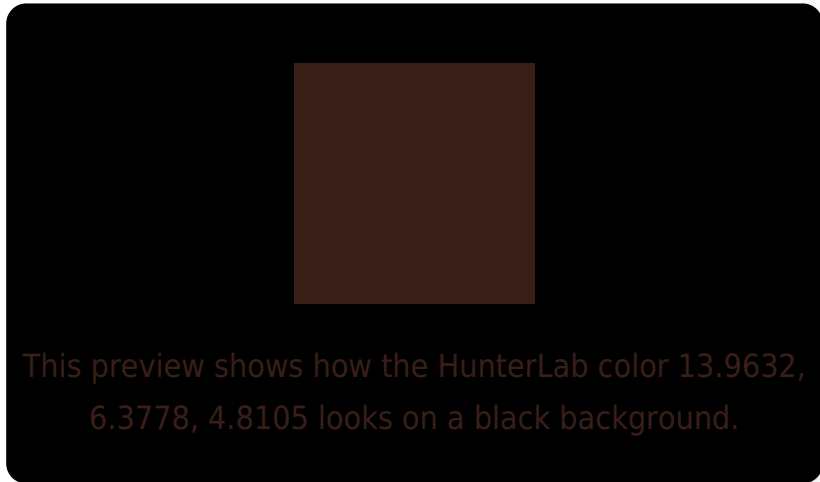
Large Text (above 18pt) WCAG AA ✓ Pass

Any Text WCAG AA ✓ Pass

Large Text (above 18pt) WCAG AAA ✓ Pass

Any Text WCAG AAA ✓ Pass

Black Background



Color Contrast Check

Large Text (above 18pt) WCAG AA × Fail

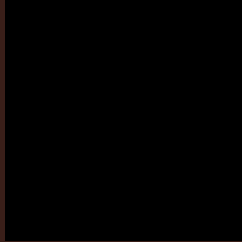
Any Text WCAG AA × Fail

Large Text (above 18pt) WCAG AAA × Fail

Any Text WCAG AAA × Fail

If you want to check with other color combinations, try the [Color Contrast Checker](#).

HunterLab 13.9632, 6.3778, 4.8105 Background



This preview shows how black text looks on a background with the HunterLab color 13.9632, 6.3778, 4.8105.

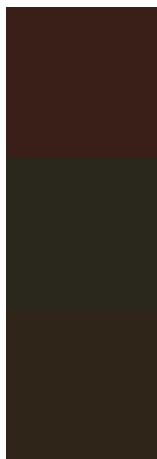


This preview shows how white text looks on a background with the HunterLab color 13.9632, 6.3778,

Color Blindness Simulation

Color vision deficiency is a very complex topic, and I could not describe the different causes any better than Wikipedia does, so if you want to learn more, you should check out their [article about color blindness](#).

Dichromacy



Original Color

13.9632, 6.3778, 4.8105

Protanopia

14.2377, -1.2212, 4.1769

Deuteranopia

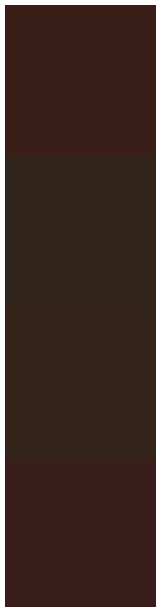
14.1189, 0.5612, 5.0809



Tritanopia

13.9010, 7.3889, 2.8667

Trichromacy



Original Color

13.9632, 6.3778, 4.8105

Protanomaly

14.0330, 1.4880, 4.2922

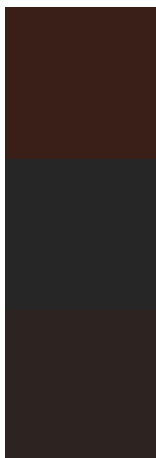
Deuteranomaly

14.0421, 2.5168, 5.0481

Tritanomaly

13.8448, 7.1137, 3.6777

Monochromacy



Original Color

13.9632, 6.3778, 4.8105

Achromatopsia

13.9221, -0.7428, 0.7564

Achromatomaly

13.6739, 1.6270, 2.2155

CSS Examples

Text

The CSS property to change the color of the text to HunterLab 13.9632, 6.3778, 4.8105 is called "color". The color property can be set on classes, ids or directly on the HTML element.

This example shows how text in the color `rgb(58, 31, 25)` looks like.

```
.text, #text, p{  
    color:rgb(58, 31, 25)  
}
```

If you want to add a text shadow in that color use the text-shadow property, you can generate a text shadow directly with our [CSS Text Shadow Generator](#).

Here you see how black text with a 4 pixel rgb(58, 31, 25) colored shadow looks like.

```
.shadow{ text-shadow: 4px 4px 2px rgb(58, 31, 25) }
```

Border

The CSS property to change the border of an element to HunterLab 13.9632, 6.3778, 4.8105 is called "border". The border property can be set on classes, ids or directly on the HTML element.

This example shows the color as border, it can be applied via the CSS property "border" or "border-color".

```
.border, #border, table{ border:4px solid rgb(58, 31, 25) }
```


If only the border color should be changed use the property `border-color`.

```
.border{ border-color:rgb(58, 31, 25) }
```

If you want to add a box shadow in that color use:

Here you see how a box with a 4 pixel `rgb(58, 31, 25)` colored shadow looks like.

```
.boxshadow{ -moz-box-shadow:4px 4px 4px  
4px rgb(58, 31, 25); -webkit-box-  
shadow:4px 4px 4px 4px rgb(58, 31, 25);  
box-shadow:4px 4px 4px 4px rgb(58, 31, 25)  
}
```

Background

The CSS property to change the background color of an element to HunterLab 13.9632, 6.3778, 4.8105 is called "background". The background property can be set on classes, ids or directly on the HTML element.

```
.background, #background, body{  
background: rgb(58, 31, 25) }
```

If only the background color should be changed can be used:

```
.background{ background-color: rgb(58, 31,  
25) }
```

This example shows the color as background, it is applied via the CSS property "background".

To optimize and compress your CSS code, you can use our [online CSS compressor and optimizer](#) based on csstidy. If you want to create a linear or radial gradient as background or border, check our [CSS Gradient Generator](#).

Hey! You found this booklet
interesting? Support Converting
Colors with the new Membership
Option!

The pro membership hides all ads, plus gives you
double the colors in the color bucket, and more
awesome pro features!

[Learn more, Memberships starting at \\$2.50/m!](#)

**Follow me
on Twitter!**

@ConvertingColor