

# Converting Colors

HunterLab(14.0624, 10.8685,  
5.1785)

Have a look what the booklet for  
HunterLab(14.0624, 10.8685,  
5.1785) contains.

<b>HunterLab(14.0107, 10.9125, 5.1674)</b> .....	3
<i><b>Conversions</b></i> .....	4
<i><b>Details</b></i> .....	6
<i><b>Harmonies</b></i> .....	12
<i><b>Previews</b></i> .....	24
<i><b>Color Blindness Simulation</b></i> .....	28
<i><b>CSS Examples</b></i> .....	31

# Color

**HunterLab(14.0107, 10.9125,  
5.1674)**

# Conversions

## Conversions Part 1

Format	Color
Hex	421A18
RGB	66, 26, 24
RGB Percent	26%, 10%, 9%
CMY	0.7412, 0.8980, 0.9059
CMYK	0.00, 0.61, 0.64, 0.74
HSL	3°, 47%, 18%
HSV	3°, 64%, 26%
XYZ	2.7810, 1.9630, 1.0965
YIQ	37.7320, 24.4820, 7.8580

# Conversions

## Conversions Part 2

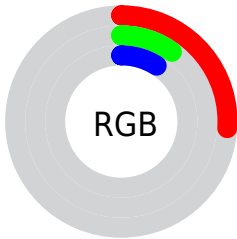
<b>Format</b>	<b>Color</b>
<b>R<sub>YB</sub></b>	66, 26, 24
Decimal	4332056
CIE Lab	15.29, 19.19, 10.76
CIE LCh	15, 22.004, 29.282
Yxy	1.9631, 0.4762, 0.3361
Android (android.graphics.Color)	4282522136 (0xFF421A18)
YUV	37.7320, -6.7699, 24.7910
Hunter-Lab	14.0107, 10.9125, 5.1674

# Details

The HunterLab color **14.0107, 10.9125, 5.1674** is a dark color, and the websafe version is hex **330000**. A complement of this color would be **20.6255, -8.4583, -2.2551**, and the grayscale version is **13.8519, -0.7391, 0.7526**.

A 20% lighter version of the original color is **29.4850, 12.5880, 7.7108**, and 0.0000, NaN, NaN is the 20% darker color. If you saturate the color by 10%, you get **13.0014, 12.8927, 5.7431**, and if you desaturate by 10%, it is **15.1779, 8.8749, 4.5512**.

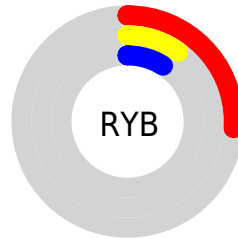
# Distribution



 Red (26%)

 Green (10%)

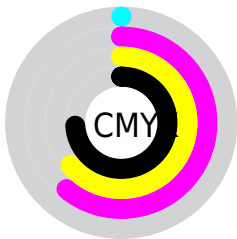
 Blue (9%)



 Red (26%)

 Yellow (10%)

 Blue (9%)

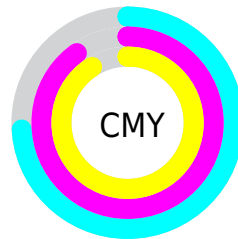


 Cyan (0%)

 Magenta (61%)

 Yellow (64%)

 Black (74%)



 Cyan (74%)

 Magenta (90%)

 Yellow (91%)

# Brightness & Saturation Gradients

These gradients show how the HunterLab color 14.0107, 10.9125, 5.1674 changes by changing the brightness by 10 percent. The first figure shows a shift by +10% for each color and the second figure -10%.

Similar to the brightness gradients but the following saturation gradients show a change of the HunterLab color 14.0107, 10.9125, 5.1674 by changing the saturation by 10% instead.



■ 14.0107, 10.9125,  
5.1674

■ 14.0107, 10.9125,  
5.1674

■ 106.9211, 15.0097,  
15.9379

■ 7.6544, 10.8360,  
5.3581

■ 29.4031, 12.5816,  
7.7215

0.0000, NaN, NaN

0.0000, NaN, NaN

■ 38.4081, 13.2070,  
8.9210

0.0000, NaN, NaN

■ 48.1812, 13.7196,  
10.0984

0.0000, NaN, NaN

■ 58.6662, 14.1342,  
11.2651

0.0000, NaN, NaN

0.0000, NaN, NaN

■ 69.8176, 14.4623,  
12.4281

0.0000, NaN, NaN

■ 81.5978, 14.7129,

0.0000, NaN, NaN

13.5925

93.9748, 14.8934,  
14.7616

14.0107, 10.9125,  
5.1674

14.0107, 10.9125,  
5.1674

13.0014, 12.8927,  
5.7431

15.1779, 8.8749,  
4.5512

12.1695, 14.7207,  
6.2433

16.4811, 6.8497,  
3.9194

11.5004, 16.3080,  
6.7501

17.9014, 4.8747,  
3.2889

11.0749, 17.3814,  
7.1286

19.4224, 2.9684,  
2.6692

21.0299, 1.1365,  
2.0649

■ 22.7126, -0.6228,  
1.4775

■ 24.4609, -2.3151,  
0.9068

■ 26.2671, -3.9473,  
0.3516

■ 28.1249, -5.5269,  
-0.1897

# Harmonies

## Analogous

The Analogous color harmony consists of three colors that are next to each other on the color wheel.



14.0111, 12.8856, 0.6232



14.0107, 10.9125, 5.1674



14.0111, 5.7035, 7.6039

# Triad

The Triadic color harmony groups three colors that are evenly spaced from another and form a triangle on the color wheel.



14.0111, 10.9115, 5.1676



14.0111, -9.4128, 5.3199



14.0111, -0.8939, -15.4300

# Complementary

The Complementary color scheme is a pair of colors which are on the opposite of each other on the color wheel.



14.0107, 10.9125, 5.1674



20.6255, -8.4583, -2.2551

# Split Complementary

Split-complementary colors differ from the complementary color scheme. The scheme consists of three colors, the original color and two neighbors of the complement color.



14.0111, -6.2097, -12.4774



14.0107, 10.9125, 5.1674



14.0111, -10.5869, 0.9007

# Square

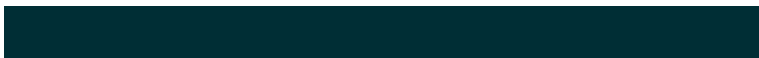
The Square scheme is like the rectangle color scheme, but the four colors are evenly spaced on the color wheel.



14.0111, 10.9115, 5.1676



14.0111, -5.9966, 7.6855



14.0111, -9.5204, -5.8019



14.0111, 5.4080, -12.7314



# Rectangle

The Rectangle color scheme consists of four colors that form a rectangle on the color wheel.



14.0107, 10.9125, 5.1674



14.0111, 1.4816, 8.4037



14.0111, -9.5204, -5.8019



14.0111, -2.8470, -15.0510

# Sweetspot

The Sweet Spot groups the original color and five complimentary colors.



14.0111, 10.9115, 5.1676



26.3911, 2.9818, 3.2122



14.7938, 16.5342, -10.3949



13.3000, 1.6713, 1.6855



63.7533, -3.4017, 3.4638



15.6573, -0.8354, 0.8507



# Same Dimension

The Same Dimension uses a secret algorithm to generate beautiful new colors.



14.0111, 10.9115, 5.1676



16.4816, 18.3956, 7.9592



17.9154, 2.5673, 8.2243



11.6056, 0.1208, 0.9347



16.2363, 26.2180, 10.4637



40.1792, 67.3215, 25.9368



# Inverse Universe

The Inverse Universe completely reimagines the original color for something new.



20.6255, -8.4583, -2.2551



26.6702, -12.2081, -3.6822



15.3599, -0.7795, -10.4446



12.1304, -1.3499, 0.3644



29.2648, -14.5888, -5.0854

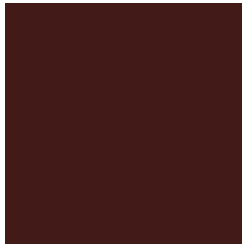


73.0390, -36.2194, -13.1050



# Previews

## White Background



This preview shows how the HunterLab color 14.0107, 10.9125, 5.1674 looks on a white background.

## Color Contrast Check

Large Text (above 18pt) WCAG AA ✓ Pass

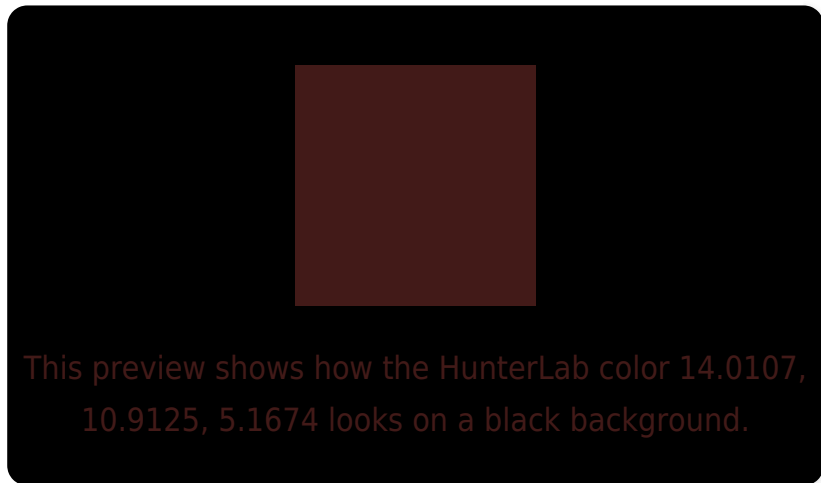
Any Text WCAG AA ✓ Pass

Large Text (above 18pt) WCAG AAA ✓ Pass

Any Text WCAG AAA ✓ Pass



# Black Background



## Color Contrast Check

Large Text (above 18pt) WCAG AA × Fail

Any Text WCAG AA × Fail

Large Text (above 18pt) WCAG AAA × Fail

Any Text WCAG AAA × Fail

If you want to check with other color combinations, try the [Color Contrast Checker](#).

## HunterLab 14.0107, 10.9125, 5.1674 Background



This preview shows how black text looks on a background with the HunterLab color 14.0107, 10.9125, 5.1674.



This preview shows how white text looks on a background with the HunterLab color 14.0107, 10.9125,



# Color Blindness Simulation

Color vision deficiency is a very complex topic, and I could not describe the different causes any better than Wikipedia does, so if you want to learn more, you should check out their [article about color blindness](#).

## Dichromacy



### Original Color

14.0107, 10.9125, 5.1674

### Protanopia

14.2548, -1.1271, 3.9292

### Deuteranopia

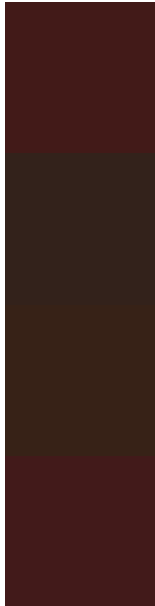
14.3963, 0.3095, 5.7502



## Tritanopia

14.0576, 11.1304, 4.4838

# Trichromacy



## Original Color

14.0107, 10.9125, 5.1674

## Protanomaly

13.8816, 3.1618, 4.1804

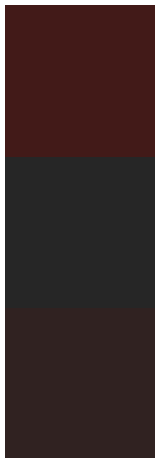
## Deuteranomaly

14.2061, 4.0668, 5.4418

## Tritanomaly

14.0414, 11.0553, 4.7192

# Monochromacy



## Original Color

14.0107, 10.9125, 5.1674

## Achromatopsia

13.9221, -0.7428, 0.7564

## Achromatomaly

13.7195, 2.8641, 2.2859

# CSS Examples

## Text

The CSS property to change the color of the text to HunterLab 14.0107, 10.9125, 5.1674 is called "color". The color property can be set on classes, ids or directly on the HTML element.

This example shows how text in the color `rgb(66, 26, 24)` looks like.

```
.text, #text, p{  
    color:rgb(66, 26, 24)  
}
```

If you want to add a text shadow in that color use the text-shadow property, you can generate a text shadow directly with our [CSS Text Shadow Generator](#).

Here you see how black text with a 4 pixel rgb(66, 26, 24) colored shadow looks like.

```
.shadow{ text-shadow: 4px 4px 2px rgb(66, 26, 24) }
```

## Border

The CSS property to change the border of an element to HunterLab 14.0107, 10.9125, 5.1674 is called "border". The border property can be set on classes, ids or directly on the HTML element.

This example shows the color as border, it can be applied via the CSS property "border" or "border-color".

```
.border, #border, table{ border:4px solid rgb(66, 26, 24) }
```



If only the border color should be changed use the property `border-color`.

```
.border{ border-color:rgb(66, 26, 24) }
```

If you want to add a box shadow in that color use:

Here you see how a box with a 4 pixel `rgb(66, 26, 24)` colored shadow looks like.

```
.boxshadow{ -moz-box-shadow:4px 4px 4px  
4px rgb(66, 26, 24); -webkit-box-  
shadow:4px 4px 4px 4px rgb(66, 26, 24);  
box-shadow:4px 4px 4px 4px rgb(66, 26, 24)  
}
```

# Background

The CSS property to change the background color of an element to HunterLab 14.0107, 10.9125, 5.1674 is called "background". The background property can be set on classes, ids or directly on the HTML element.

```
.background, #background, body{  
background: rgb(66, 26, 24) }
```

If only the background color should be changed can be used:

```
.background{ background-color: rgb(66, 26,  
24) }
```

This example shows the color as background, it is applied via the CSS property "background".

To optimize and compress your CSS code, you can use our [online CSS compressor and optimizer](#) based on csstidy. If you want to create a linear or radial gradient as background or border, check our [CSS Gradient Generator](#).

# Hey! You found this booklet interesting? Support Converting Colors with the new Membership Option!

The pro membership hides all ads, plus gives you double the colors in the color bucket, and more awesome pro features!

**[Learn more, Memberships starting at \\$2.50/m!](#)**

**Follow me  
on Twitter!**

@ConvertingColor