

Converting Colors

HunterLab(14.0823, 7.8327,
3.6431)

Have a look what the booklet for
HunterLab(14.0823, 7.8327, 3.6431)
contains.

HunterLab(14.0817, 7.8342, 3.6426)	3
<i>Conversions</i>	4
<i>Details</i>	6
<i>Harmonies</i>	12
<i>Previews</i>	24
<i>Color Blindness Simulation</i>	28
<i>CSS Examples</i>	31

Color

**HunterLab(14.0817, 7.8342,
3.6426)**

Conversions

Conversions Part 1

Format	Color
Hex	3C1E1E
RGB	60, 30, 30
RGB Percent	24%, 12%, 12%
CMY	0.7647, 0.8823, 0.8824
CMYK	0.00, 0.50, 0.50, 0.76
HSL	0°, 33%, 18%
HSV	0°, 50%, 24%
XYZ	2.5621, 1.9829, 1.4760
YIQ	38.9700, 17.8800, 6.3600

Conversions

Conversions Part 2

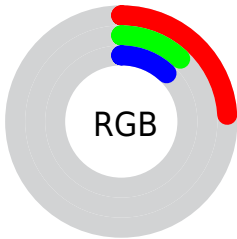
Format	Color
R_{YB}	60, 30, 30
Decimal	3939870
CIE _{Lab}	15.40, 14.58, 6.45
CIE _{LCh}	15, 15.945, 23.848
Yxy	1.9830, 0.4255, 0.3293
Android (android.graphics.Color)	4282129950 (0xFF3C1E1E)
YUV	38.9700, -4.4222, 18.4433
Hunter-Lab	14.0817, 7.8342, 3.6426

Details

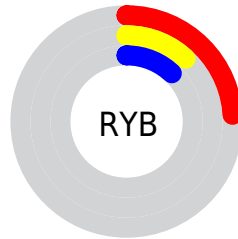
The HunterLab color **14.0817, 7.8342, 3.6426** is a dark color, and the websafe version is hex **330000**. A complement of this color would be **19.5801, -7.2186, -1.0061**, and the grayscale version is **14.2442, -0.7600, 0.7739**.

A 20% lighter version of the original color is **29.3993, 9.2153, 5.2116**, and 0.0000, NaN, NaN is the 20% darker color. If you saturate the color by 10%, you get **12.9614, 9.7504, 4.2044**, and if you desaturate by 10%, it is **15.3293, 5.9274, 3.0940**.

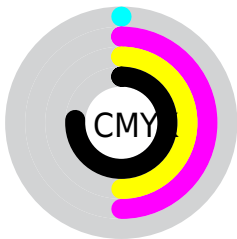
Distribution



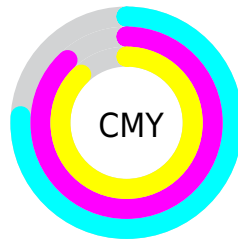
- Red (24%)
- Green (12%)
- Blue (12%)



- Red (24%)
- Yellow (12%)
- Blue (12%)



- Cyan (0%)
- Magenta (50%)
- Yellow (50%)
- Black (76%)



- Cyan (76%)
- Magenta (88%)
- Yellow (88%)

Brightness & Saturation Gradients

These gradients show how the HunterLab color 14.0817, 7.8342, 3.6426 changes by changing the brightness by 10 percent. The first figure shows a shift by +10% for each color and the second figure -10%.

Similar to the brightness gradients but the following saturation gradients show a change of the HunterLab color 14.0817, 7.8342, 3.6426 by changing the saturation by 10% instead.

■ 14.0817, 7.8342,
3.6426

■ 14.0817, 7.8342,
3.6426

107.0608, 9.8957,
12.0190

■ 7.7304, 7.8699,
3.8775

■ 29.4939, 8.9711,
5.4658

0.0000, NaN, NaN

0.0000, NaN, NaN

■ 38.5074, 9.3496,
6.3667

0.0000, NaN, NaN

■ 48.2883, 9.6281,
7.2739

0.0000, NaN, NaN

■ 58.7805, 9.8201,
8.1923

0.0000, NaN, NaN

0.0000, NaN, NaN

■ 69.9388, 9.9356,
9.1245

0.0000, NaN, NaN

■ 81.7254, 9.9827,

0.0000, NaN, NaN

10.0723

■ 94.1086, 9.9676,
11.0369

■ 14.0817, 7.8342,
3.6426

■ 14.0817, 7.8342,
3.6426

■ 12.9614, 9.7504,
4.2044

■ 15.3293, 5.9274,
3.0940

■ 11.9876, 11.6168,
4.7596

■ 16.6849, 4.0669,
2.5683

■ 11.1813, 13.3403,
5.2790

■ 18.1329, 2.2681,
2.0699

■ 10.5078, 14.9325,
5.7640

■ 19.6606, 0.5351,
1.5993

■ 9.8017, 16.7836,
6.3336

■ 21.2571, -1.1343,
1.1549

■ 9.8017, 16.7837,
6.3336

■ 22.9138, -2.7453,
0.7345

■ 24.6236, -4.3046,
0.3352

■ 26.3806, -5.8188,
-0.0456

■ 28.1801, -7.2942,
-0.4103

Harmonies

Analogous

The Analogous color harmony consists of three colors that are next to each other on the color wheel.



14.0821, 8.6654, -0.1219



14.0817, 7.8342, 3.6426



14.0821, 4.5837, 5.8325

Triad

The Triadic color harmony groups three colors that are evenly spaced from another and form a triangle on the color wheel.



14.0821, 7.8334, 3.6428



14.0821, -6.9425, 4.7297



14.0821, -1.6458, -9.7872

Complementary

The Complementary color scheme is a pair of colors which are on the opposite of each other on the color wheel.



14.0817, 7.8342, 3.6426



19.5801, -7.2186, -1.0061

Split Complementary

Split-complementary colors differ from the complementary color scheme. The scheme consists of three colors, the original color and two neighbors of the complement color.



14.0821, -5.3955, -7.3845



14.0817, 7.8342, 3.6426



14.0821, -8.2028, 1.6006

Square

The Square scheme is like the rectangle color scheme, but the four colors are evenly spaced on the color wheel.



14.0821, 7.8334, 3.6428



14.0821, -4.0062, 6.3355



14.0821, -7.6732, -2.8833



14.0821, 2.8271, -8.7375

Rectangle

The Rectangle color scheme consists of four colors that form a rectangle on the color wheel.



14.0817, 7.8342, 3.6426



14.0821, 1.6749, 6.5509



14.0821, -7.6732, -2.8833



14.0821, -3.0252, -9.3380

Sweetspot

The Sweet Spot groups the original color and five complimentary colors.



14.0821, 7.8334, 3.6428



24.7170, 1.9981, 2.4549



14.8844, 11.6488, -7.6531



13.0112, 1.1569, 1.3275



62.6995, -3.3455, 3.4066



14.8260, -0.7911, 0.8055

Same Dimension

The Same Dimension uses a secret algorithm to generate beautiful new colors.



14.0821, 7.8334, 3.6428



16.6717, 13.5508, 5.7463



17.1207, 1.6943, 6.3256



10.8428, 0.1493, 0.8331



15.4866, 26.5193, 10.0070



39.3779, 67.4340, 25.4450

Inverse Universe

The Inverse Universe completely reimagines the original color for something new.



19.5801, -7.2186, -1.0061



25.4265, -10.8242, -1.7929



15.7450, -1.5986, -6.4240



11.3863, -1.3006, 0.3863



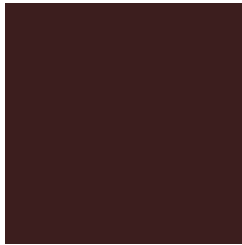
29.8014, -15.7982, -3.1454



75.7772, -40.1704, -7.9985

Previews

White Background



This preview shows how the HunterLab color 14.0817, 7.8342, 3.6426 looks on a white background.

Color Contrast Check

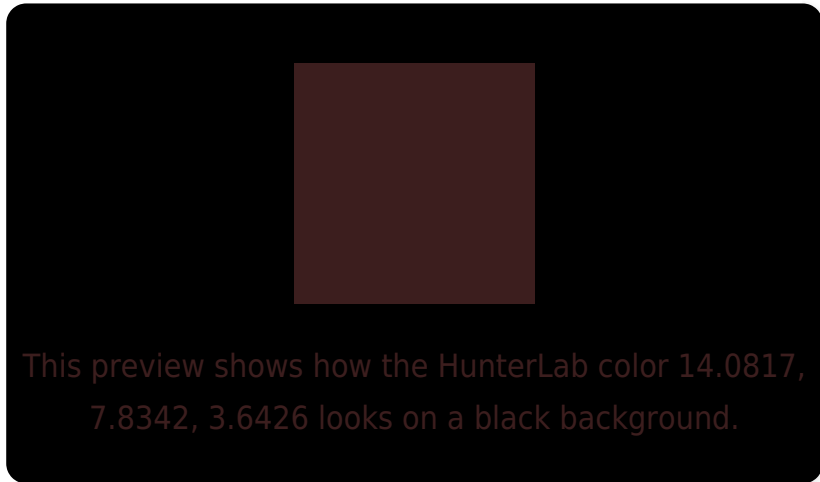
Large Text (above 18pt) WCAG AA ✓ Pass

Any Text WCAG AA ✓ Pass

Large Text (above 18pt) WCAG AAA ✓ Pass

Any Text WCAG AAA ✓ Pass

Black Background



Color Contrast Check

Large Text (above 18pt) WCAG AA × Fail

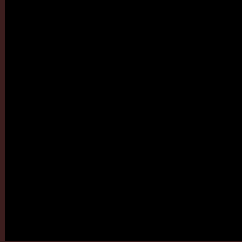
Any Text WCAG AA × Fail

Large Text (above 18pt) WCAG AAA × Fail

Any Text WCAG AAA × Fail

If you want to check with other color combinations, try the [Color Contrast Checker](#).

HunterLab 14.0817, 7.8342, 3.6426 Background



This preview shows how black text looks on a background with the HunterLab color 14.0817, 7.8342, 3.6426.



This preview shows how white text looks on a background with the HunterLab color 14.0817, 7.8342,

Color Blindness Simulation

Color vision deficiency is a very complex topic, and I could not describe the different causes any better than Wikipedia does, so if you want to learn more, you should check out their [article about color blindness](#).

Dichromacy



Original Color

14.0817, 7.8342, 3.6426

Protanopia

14.2757, -0.8663, 2.4961

Deuteranopia

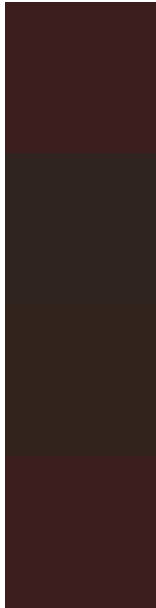
14.3380, 0.3253, 4.0340



Tritanopia

14.1191, 8.0161, 3.1021

Trichromacy



Original Color

14.0817, 7.8342, 3.6426

Protanomaly

14.1419, 2.0649, 2.7180

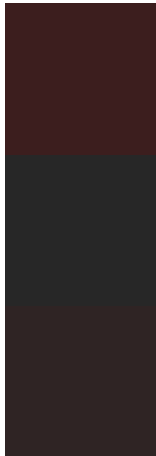
Deuteranomaly

14.1230, 2.9395, 3.8741

Tritanomaly

14.1001, 7.9239, 3.3762

Monochromacy



Original Color

14.0817, 7.8342, 3.6426

Achromatopsia

14.2438, -0.7600, 0.7739

Achromatomaly

14.1190, 2.1142, 1.7282

CSS Examples

Text

The CSS property to change the color of the text to HunterLab 14.0817, 7.8342, 3.6426 is called "color". The color property can be set on classes, ids or directly on the HTML element.

This example shows how text in the color `rgb(60, 30, 30)` looks like.

```
.text, #text, p{  
    color:rgb(60, 30, 30)  
}
```

If you want to add a text shadow in that color use the text-shadow property, you can generate a text shadow directly with our [CSS Text Shadow Generator](#).

Here you see how black text with a 4 pixel rgb(60, 30, 30) colored shadow looks like.

```
.shadow{ text-shadow: 4px 4px 2px rgb(60, 30, 30) }
```

Border

The CSS property to change the border of an element to HunterLab 14.0817, 7.8342, 3.6426 is called "border". The border property can be set on classes, ids or directly on the HTML element.

This example shows the color as border, it can be applied via the CSS property "border" or "border-color".

```
.border, #border, table{ border:4px solid rgb(60, 30, 30) }
```


If only the border color should be changed use the property `border-color`.

```
.border{ border-color:rgb(60, 30, 30) }
```

If you want to add a box shadow in that color use:

Here you see how a box with a 4 pixel `rgb(60, 30, 30)` colored shadow looks like.

```
.boxshadow{ -moz-box-shadow:4px 4px 4px  
4px rgb(60, 30, 30); -webkit-box-  
shadow:4px 4px 4px 4px rgb(60, 30, 30);  
box-shadow:4px 4px 4px 4px rgb(60, 30, 30)  
}
```

Background

The CSS property to change the background color of an element to HunterLab 14.0817, 7.8342, 3.6426 is called "background". The background property can be set on classes, ids or directly on the HTML element.

```
.background, #background, body{  
background: rgb(60, 30, 30) }
```

If only the background color should be changed can be used:

```
.background{ background-color: rgb(60, 30,  
30) }
```

This example shows the color as background, it is applied via the CSS property "background".

To optimize and compress your CSS code, you can use our [online CSS compressor and optimizer](#) based on csstidy. If you want to create a linear or radial gradient as background or border, check our [CSS Gradient Generator](#).

Hey! You found this booklet interesting? Support Converting Colors with the new Membership Option!

The pro membership hides all ads, plus gives you double the colors in the color bucket, and more awesome pro features!

[Learn more, Memberships starting at \\$2.50/m!](#)

**Follow me
on Twitter!**

@ConvertingColor