

# Converting Colors

HunterLab(14.1346, 6.6716,  
0.0741)

Have a look what the booklet for  
HunterLab(14.1346, 6.6716, 0.0741)  
contains.

<b>HunterLab(14.1610, 6.6337, 0.0588)</b> .....	3
<b><i>Conversions</i></b> .....	4
<b><i>Details</i></b> .....	6
<b><i>Harmonies</i></b> .....	12
<b><i>Previews</i></b> .....	24
<b><i>Color Blindness Simulation</i></b> .....	28
<b><i>CSS Examples</i></b> .....	31

# Color

**HunterLab(14.1610, 6.6337,  
0.0588)**

# Conversions

## Conversions Part 1

Format	Color
Hex	372029
RGB	55, 32, 41
RGB Percent	22%, 13%, 16%
CMY	0.7843, 0.8745, 0.8392
CMYK	0.00, 0.42, 0.25, 0.78
HSL	337°, 26%, 17%
HSV	337°, 42%, 22%
XYZ	2.4923, 2.0053, 2.3535
YIQ	39.9030, 10.8190, 7.6750

# Conversions

## Conversions Part 2

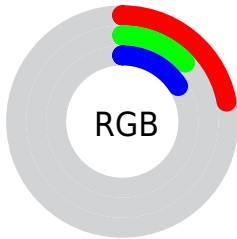
<b>Format</b>	<b>Color</b>
<b>R<sub>YB</sub></b>	55, 32, 41
Decimal	3612713
CIE Lab	15.52, 12.70, -1.38
CIE LCh	16, 12.776, 353.822
Yxy	2.0054, 0.3638, 0.2927
Android (android.graphics.Color)	4281802793 (0xFF372029)
YUV	39.9030, 0.5408, 13.2401
Hunter-Lab	14.1610, 6.6337, 0.0588

# Details

The HunterLab color **14.1610, 6.6337, 0.0588** is a dark color, and the websafe version is hex **333333**. A complement of this color would be **17.9910, -7.1258, 2.4425**, and the grayscale version is **14.5315, -0.7754, 0.7895**.

A 20% lighter version of the original color is **29.5370, 7.8829, 0.6660**, and 0.0000, NaN, NaN is the 20% darker color. If you saturate the color by 10%, you get **13.0810, 8.4990, 0.0306**, and if you desaturate by 10%, it is **15.3339, 4.7595, 0.1851**.

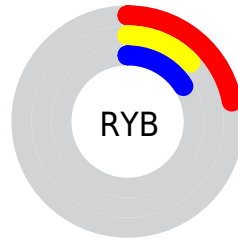
# Distribution



Red (22%)

Green (13%)

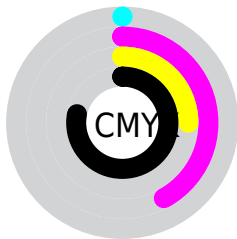
Blue (16%)



Red (22%)

Yellow (13%)

Blue (16%)

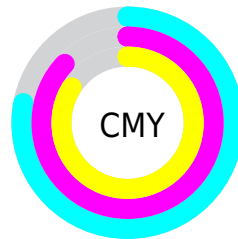


Cyan (0%)

Magenta (42%)

Yellow (25%)

Black (78%)



Cyan (78%)

Magenta (87%)

Yellow (84%)

# Brightness & Saturation Gradients

These gradients show how the HunterLab color 14.1610, 6.6337, 0.0588 changes by changing the brightness by 10 percent. The first figure shows a shift by +10% for each color and the second figure -10%.

Similar to the brightness gradients but the following saturation gradients show a change of the HunterLab color 14.1610, 6.6337, 0.0588 by changing the saturation by 10% instead.



■ 14.1610, 6.6337,  
0.0588

■ 14.1610, 6.6337,  
0.0588

107.2165, 7.8309,  
4.4643

■ 7.8143, 6.6872,  
-0.3040

■ 29.5953, 7.5383,  
0.7098

0.0000, NaN, NaN

0.0000, NaN, NaN

■ 38.6182, 7.8116,  
1.1198

0.0000, NaN, NaN

■ 48.4078, 7.9911,  
1.5778

0.0000, NaN, NaN

■ 58.9081, 8.0893,  
2.0794

0.0000, NaN, NaN

0.0000, NaN, NaN

■ 70.0740, 8.1158,  
2.6213

0.0000, NaN, NaN

■ 81.8678, 8.0778,

0.0000, NaN, NaN

3.2009

94.2578, 7.9813,  
3.8158

14.1610, 6.6337,  
0.0588

14.1610, 6.6337,  
0.0588

13.0810, 8.4990,  
0.0306

15.3339, 4.7595,  
0.1851

12.1073, 10.3166,  
0.1168

16.5861, 2.9023,  
0.3923

11.2557, 12.0243,  
0.3337

17.9075, 1.0738,  
0.6668

10.5419, 13.5378,  
0.6914

19.2893, -0.7209,  
0.9969

9.8843, 15.0644,  
1.0852

20.7240, -2.4811,  
1.3731

■ 9.3184, 16.5599,  
1.3552

■ 22.2056, -4.2087,  
1.7880

■ 23.7291, -5.9067,  
2.2356

■ 25.2904, -7.5784,  
2.7110

■ 26.8860, -9.2273,  
3.2104

# Harmonies

## Analogous

The Analogous color harmony consists of three colors that are next to each other on the color wheel.



14.1613, 5.1415, -3.5886



14.1610, 6.6337, 0.0588



14.1613, 5.9940, 3.1359

# Triad

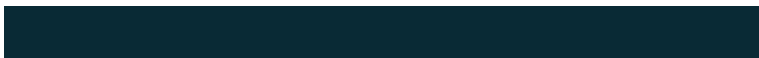
The Triadic color harmony groups three colors that are evenly spaced from another and form a triangle on the color wheel.



14.1613, 6.6331, 0.0591



14.1613, -3.3917, 5.4922



14.1613, -4.5400, -5.4848

# Complementary

The Complementary color scheme is a pair of colors which are on the opposite of each other on the color wheel.



14.1610, 6.6337, 0.0588



17.9910, -7.1258, 2.4425

# Split Complementary

Split-complementary colors differ from the complementary color scheme. The scheme consists of three colors, the original color and two neighbors of the complement color.



14.1613, -6.4396, -2.0889



14.1610, 6.6337, 0.0588



14.1613, -5.8234, 4.0736

# Square

The Square scheme is like the rectangle color scheme, but the four colors are evenly spaced on the color wheel.



14.1613, 6.6331, 0.0591



14.1613, -0.0194, 5.8001



14.1613, -6.8855, 1.4475



14.1613, -1.4786, -7.2559



# Rectangle

The Rectangle color scheme consists of four colors that form a rectangle on the color wheel.



14.1610, 6.6337, 0.0588



14.1613, 4.4741, 4.5485



14.1613, -6.8855, 1.4475



14.1613, -5.3230, -4.4607

# Sweetspot

The Sweet Spot groups the original color and five complimentary colors.



14.1613, 6.6331, 0.0591



22.8107, 1.8138, 0.7908



13.7301, 6.1843, -7.0393



11.8454, 1.0432, 0.3978



60.6009, -3.2335, 3.2926



13.1868, -0.7036, 0.7165



# Same Dimension

The Same Dimension uses a secret algorithm to generate beautiful new colors.



14.1613, 6.6331, 0.0591



16.8103, 11.1274, 0.0419



14.4149, 4.7034, 3.3437



10.1464, 0.2490, 0.4278



15.4658, 27.3060, 3.6342



39.7183, 69.7025, 12.6130



# Inverse Universe

The Inverse Universe completely reimagines the original color for something new.



14.1613, 6.6331, 0.0591



16.8103, 11.1274, 0.0419



17.6122, -5.0299, -1.4032



10.1464, 0.2490, 0.4278



15.4658, 27.3060, 3.6342



39.7183, 69.7025, 12.6130



# Previews

## White Background



This preview shows how the HunterLab color 14.1610, 6.6337, 0.0588 looks on a white background.

## Color Contrast Check

Large Text (above 18pt) WCAG AA ✓ Pass

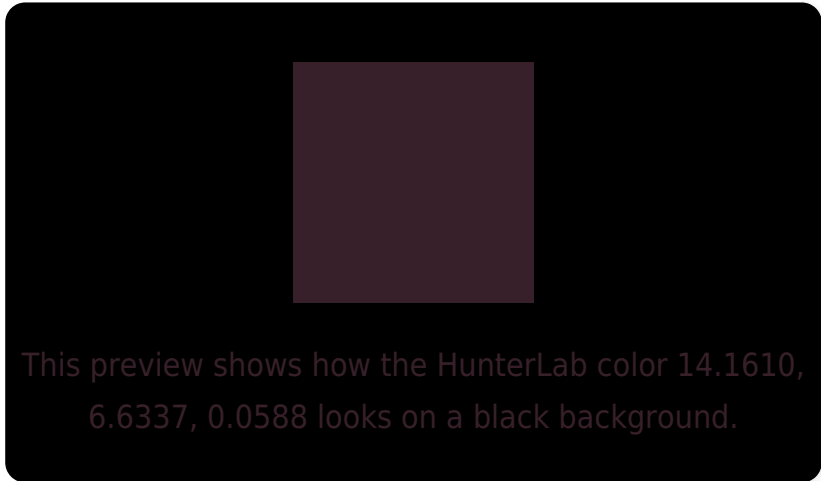
Any Text WCAG AA ✓ Pass

Large Text (above 18pt) WCAG AAA ✓ Pass

Any Text WCAG AAA ✓ Pass



# Black Background



## Color Contrast Check

Large Text (above 18pt) WCAG AA × Fail

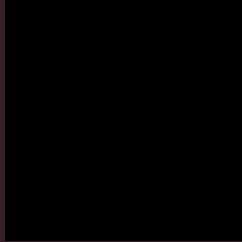
Any Text WCAG AA × Fail

Large Text (above 18pt) WCAG AAA × Fail

Any Text WCAG AAA × Fail

If you want to check with other color combinations, try the [Color Contrast Checker](#).

# HunterLab 14.1610, 6.6337, 0.0588 Background



This preview shows how black text looks on a background with the HunterLab color 14.1610, 6.6337, 0.0588.



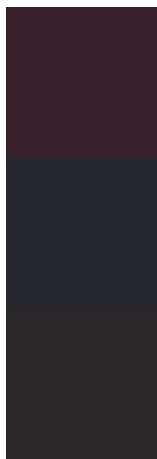
This preview shows how white text looks on a background with the HunterLab color 14.1610, 6.6337,

0.0588.

# Color Blindness Simulation

Color vision deficiency is a very complex topic, and I could not describe the different causes any better than Wikipedia does, so if you want to learn more, you should check out their [article about color blindness](#).

## Dichromacy



### Original Color

14.1610, 6.6337, 0.0588

### Protanopia

14.3268, -0.1722, -1.4490

### Deuteranopia

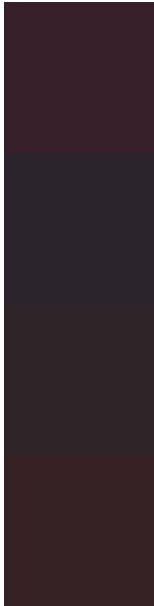
14.3284, 0.7427, 0.5352



## Tritanopia

14.1185, 5.2380, 2.1139

# Trichromacy



## Original Color

14.1610, 6.6337, 0.0588

## Protanomaly

14.0680, 2.3339, -1.3332

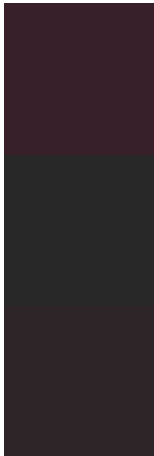
## Deuteranomaly

14.2102, 2.5936, 0.4257

## Tritanomaly

14.1618, 5.4561, 1.4942

# Monochromacy



## Original Color

14.1610, 6.6337, 0.0588

## Achromatopsia

14.5667, -0.7772, 0.7914

## Achromatomaly

14.2626, 1.6573, 0.4724

# CSS Examples

## Text

The CSS property to change the color of the text to HunterLab 14.1610, 6.6337, 0.0588 is called "color". The color property can be set on classes, ids or directly on the HTML element.

This example shows how text in the color `rgb(55, 32, 41)` looks like.

```
.text, #text, p{  
    color:rgb(55, 32, 41)  
}
```

If you want to add a text shadow in that color use the text-shadow property, you can generate a text shadow directly with our [CSS Text Shadow Generator](#).

Here you see how black text with a 4 pixel rgb(55, 32, 41) colored shadow looks like.

```
.shadow{ text-shadow: 4px 4px 2px rgb(55, 32, 41) }
```

## Border

The CSS property to change the border of an element to HunterLab 14.1610, 6.6337, 0.0588 is called "border". The border property can be set on classes, ids or directly on the HTML element.

This example shows the color as border, it can be applied via the CSS property "border" or "border-color".

```
.border, #border, table{ border:4px solid rgb(55, 32, 41) }
```



If only the border color should be changed use the property `border-color`.

```
.border{ border-color:rgb(55, 32, 41) }
```

If you want to add a box shadow in that color use:

Here you see how a box with a 4 pixel `rgb(55, 32, 41)` colored shadow looks like.

```
.boxshadow{ -moz-box-shadow:4px 4px 4px  
4px rgb(55, 32, 41); -webkit-box-  
shadow:4px 4px 4px 4px rgb(55, 32, 41);  
box-shadow:4px 4px 4px 4px rgb(55, 32, 41)  
}
```

# Background

The CSS property to change the background color of an element to HunterLab 14.1610, 6.6337, 0.0588 is called "background". The background property can be set on classes, ids or directly on the HTML element.

```
.background, #background, body{  
background: rgb(55, 32, 41) }
```

If only the background color should be changed can be used:

```
.background{ background-color: rgb(55, 32,  
41) }
```

This example shows the color as background, it is applied via the CSS property "background".

To optimize and compress your CSS code, you can use our [online CSS compressor and optimizer](#) based on csstidy. If you want to create a linear or radial gradient as background or border, check our [CSS Gradient Generator](#).

# Hey! You found this booklet interesting? Support Converting Colors with the new Membership Option!

The pro membership hides all ads, plus gives you double the colors in the color bucket, and more awesome pro features!

**[Learn more, Memberships starting at \\$2.50/m!](#)**

**Follow me  
on Twitter!**

@ConvertingColor