

Converting Colors

HunterLab(14.3141, -3.3591,
2.8310)

Have a look what the booklet for
HunterLab(14.3141, -3.3591, 2.8310)
contains.

HunterLab(14.2680, -3.3617, 2.7540)	3
<i>Conversions</i>	4
<i>Details</i>	6
<i>Harmonies</i>	12
<i>Previews</i>	24
<i>Color Blindness Simulation</i>	28
<i>CSS Examples</i>	31

Color

**HunterLab(14.2680, -3.3617,
2.7540)**

Conversions

Conversions Part 1

Format	Color
Hex	222921
RGB	34, 41, 33
RGB Percent	13%, 16%, 13%
CMY	0.8667, 0.8392, 0.8706
CMYK	0.17, 0.00, 0.20, 0.84
HSL	113°, 11%, 15%
HSV	113°, 20%, 16%
XYZ	1.7271, 2.0358, 1.7407
YIQ	37.9950, -1.6040, -3.9720

Conversions

Conversions Part 2

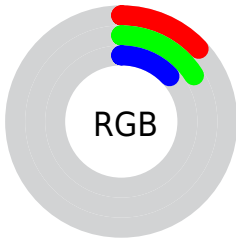
Format	Color
R_{YB}	33, 41, 40
Decimal	2238753
CIE _{Lab}	15.67, -5.07, 4.23
CIE _{LCh}	16, 6.604, 140.205
Yxy	2.0358, 0.3138, 0.3699
Android (android.graphics.Color)	4280428833 (0xFF222921)
YUV	37.9950, -2.4625, -3.5036
Hunter-Lab	14.2680, -3.3617, 2.7540

Details

The HunterLab color **14.2680, -3.3617, 2.7540** is a dark color, and the websafe version is hex **333333**. A complement of this color would be **13.0345, 2.1033, -1.4742**, and the grayscale version is **13.9287, -0.7432, 0.7568**.

A 20% lighter version of the original color is **29.6835, -4.9858, 4.1794**, and 0.0000, NaN, NaN is the 20% darker color. If you saturate the color by 10%, you get **13.9873, -4.5562, 3.6393**, and if you desaturate by 10%, it is **14.5754, -2.0829, 1.7914**.

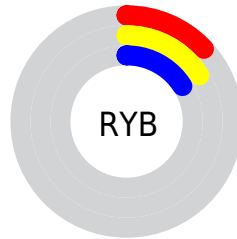
Distribution



Red (13%)

Green (16%)

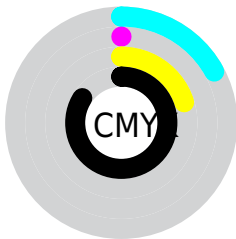
Blue (13%)



Red (13%)

Yellow (16%)

Blue (16%)

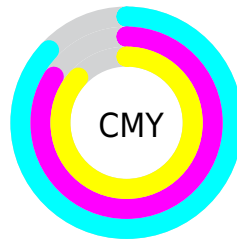


Cyan (17%)

Magenta (0%)

Yellow (20%)

Black (84%)



Cyan (87%)

Magenta (84%)

Yellow (87%)

Brightness & Saturation Gradients

These gradients show how the HunterLab color 14.2680, -3.3617, 2.7540 changes by changing the brightness by 10 percent. The first figure shows a shift by +10% for each color and the second figure -10%.

Similar to the brightness gradients but the following saturation gradients show a change of the HunterLab color 14.2680, -3.3617, 2.7540 by changing the saturation by 10% instead.

■ 14.2680, -3.3617,
2.7540

■ 14.2680, -3.3617,
2.7540

107.4264,
-10.9766, 9.9555

■ 7.9257, -3.2129,
2.6420

■ 29.7320, -4.9574,
4.2227

0.0000, NaN, NaN

0.0000, NaN, NaN

■ 38.7676, -5.7654,
4.9776

0.0000, NaN, NaN

■ 48.5688, -6.5878,
5.7523

0.0000, NaN, NaN

■ 59.0800, -7.4274,
6.5483

0.0000, NaN, NaN

0.0000, NaN, NaN

■ 70.2561, -8.2854,
7.3664

0.0000, NaN, NaN

■ 82.0596, -9.1628,

0.0000, NaN, NaN

8.2070

■ 94.4588, -10.0598,
9.0701

■ 14.2680, -3.3617,
2.7540

■ 14.2680, -3.3617,
2.7540

■ 13.9873, -4.5562,
3.6393

■ 14.5754, -2.0829,
1.7914

■ 13.7328, -5.6576,
4.4410

■ 14.9080, -0.7270,
0.7572

■ 13.5054, -6.6591,
5.1544

■ 15.2652, 0.6977,
-0.3422

■ 13.3051, -7.5544,
5.7756

■ 15.6463, 2.1830,
-1.5004

■ 13.1318, -8.3387,
6.3020

■ 16.0502, 3.7216,
-2.7113

■ 12.9845, -9.0127,
6.7418

■ 16.4760, 5.3064,
-3.9690

■ 12.8558, -9.6159,
7.1839

■ 16.9227, 6.9309,
-5.2680

■ 12.7302, -10.2137,
7.6388

■ 17.3895, 8.5894,
-6.6033

■ 12.7241, -10.2431,
7.6612

■ 17.8753, 10.2766,
-7.9704

Harmonies

Analogous

The Analogous color harmony consists of three colors that are next to each other on the color wheel.



14.2683, -1.9551, 3.5702



14.2680, -3.3617, 2.7540



14.2683, -4.0613, 1.3336

Triad

The Triadic color harmony groups three colors that are evenly spaced from another and form a triangle on the color wheel.



14.2683, -3.3620, 2.7542



14.2683, -1.3548, -2.9242



14.2683, 2.6864, 1.8832

Complementary

The Complementary color scheme is a pair of colors which are on the opposite of each other on the color wheel.



14.2680, -3.3617, 2.7540



13.0345, 2.1033, -1.4742

Split Complementary

Split-complementary colors differ from the complementary color scheme. The scheme consists of three colors, the original color and two neighbors of the complement color.



14.2683, 2.8671, 0.1964



14.2680, -3.3617, 2.7540



14.2683, 0.4715, -2.7287

Square

The Square scheme is like the rectangle color scheme, but the four colors are evenly spaced on the color wheel.



14.2683, -3.3620, 2.7542



14.2683, -2.9415, -2.0367



14.2683, 2.0385, -1.5319



14.2683, 1.5566, 3.1130

Rectangle

The Rectangle color scheme consists of four colors that form a rectangle on the color wheel.



14.2680, -3.3617, 2.7540



14.2683, -4.0573, 0.1719



14.2683, 2.0385, -1.5319



14.2683, 2.8623, 1.3561

Sweetspot

The Sweet Spot groups the original color and five complimentary colors.



14.2683, -3.3620, 2.7542



18.7800, -2.1318, 1.8872



14.4721, -1.3290, 2.9995



10.6389, -1.1958, 1.0601



57.4755, -3.0668, 3.1228



10.7914, -0.5758, 0.5863

Same Dimension

The Same Dimension uses a secret algorithm to generate beautiful new colors.



14.2683, -3.3620, 2.7542



18.0750, -5.0721, 4.0973



14.2698, -3.2363, 1.8234



8.3307, -1.0686, 0.9311



25.3611, -21.0592, 15.2587



68.6569, -58.0290, 41.2902

Inverse Universe

The Inverse Universe completely reimagines the original color for something new.



13.0345, 2.1033, -1.4742



16.1076, 3.6505, -2.6539



13.0367, 1.9591, -0.2982



8.0409, 0.2133, -0.0602



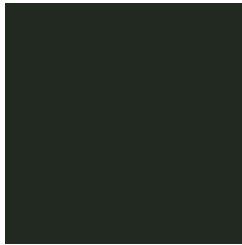
14.4355, 29.1716, -25.1703



38.8270, 78.6893, -69.4589

Previews

White Background



This preview shows how the HunterLab color 14.2680, -3.3617, 2.7540 looks on a white background.

Color Contrast Check

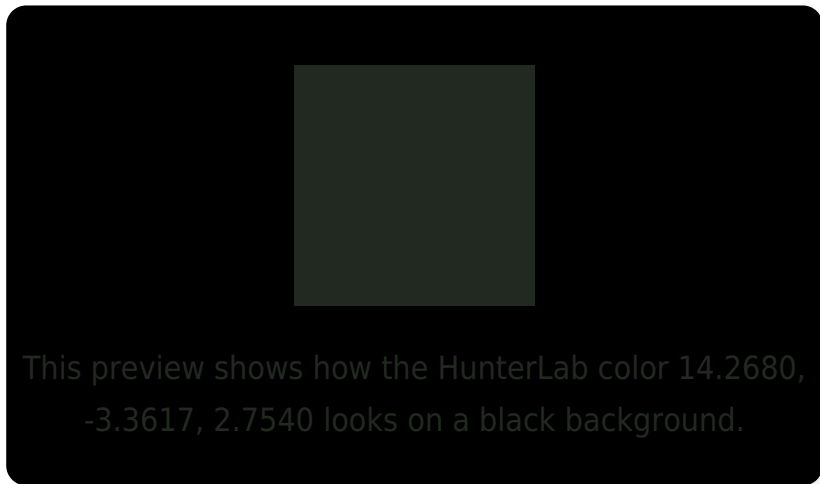
Large Text (above 18pt) WCAG AA ✓ Pass

Any Text WCAG AA ✓ Pass

Large Text (above 18pt) WCAG AAA ✓ Pass

Any Text WCAG AAA ✓ Pass

Black Background



Color Contrast Check

Large Text (above 18pt) WCAG AA × Fail

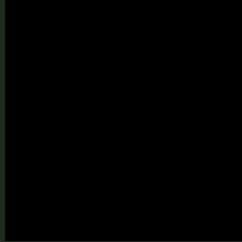
Any Text WCAG AA × Fail

Large Text (above 18pt) WCAG AAA × Fail

Any Text WCAG AAA × Fail

If you want to check with other color combinations, try the [Color Contrast Checker](#).

HunterLab 14.2680, -3.3617, 2.7540 Background



This preview shows how black text looks on a background with the HunterLab color 14.2680, -3.3617, 2.7540.



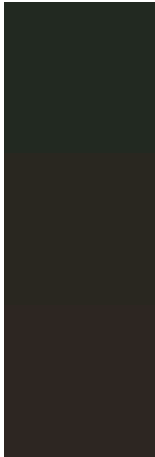
This preview shows how white text looks on a background with the HunterLab color 14.2680, -3.3617,

2.7540.

Color Blindness Simulation

Color vision deficiency is a very complex topic, and I could not describe the different causes any better than Wikipedia does, so if you want to learn more, you should check out their [article about color blindness](#).

Dichromacy



Original Color

14.2680, -3.3617, 2.7540

Protanopia

14.2364, -1.0823, 3.0624

Deuteranopia

14.3513, 0.5573, 2.6007



Tritanopia

14.3773, -1.2930, -0.5885

Trichromacy



Original Color

14.2680, -3.3617, 2.7540

Protanomaly

14.2616, -2.1931, 3.0686

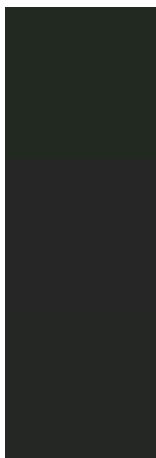
Deuteranomaly

14.2757, -0.8663, 2.4961

Tritanomaly

14.2176, -2.0542, 0.7203

Monochromacy



Original Color

14.2680, -3.3617, 2.7540

Achromatopsia

13.9221, -0.7428, 0.7564

Achromatomaly

14.0418, -1.6038, 1.5770

CSS Examples

Text

The CSS property to change the color of the text to HunterLab 14.2680, -3.3617, 2.7540 is called "color". The color property can be set on classes, ids or directly on the HTML element.

This example shows how text in the color `rgb(34, 41, 33)` looks like.

```
.text, #text, p{  
    color:rgb(34, 41, 33)  
}
```

If you want to add a text shadow in that color use the text-shadow property, you can generate a text shadow directly with our [CSS Text Shadow Generator](#).

Here you see how black text with a 4 pixel rgb(34, 41, 33) colored shadow looks like.

```
.shadow{ text-shadow: 4px 4px 2px rgb(34, 41, 33) }
```

Border

The CSS property to change the border of an element to HunterLab 14.2680, -3.3617, 2.7540 is called "border". The border property can be set on classes, ids or directly on the HTML element.

This example shows the color as border, it can be applied via the CSS property "border" or "border-color".

```
.border, #border, table{ border:4px solid rgb(34, 41, 33) }
```


If only the border color should be changed use the property `border-color`.

```
.border{ border-color:rgb(34, 41, 33) }
```

If you want to add a box shadow in that color use:

Here you see how a box with a 4 pixel `rgb(34, 41, 33)` colored shadow looks like.

```
.boxshadow{ -moz-box-shadow:4px 4px 4px  
4px rgb(34, 41, 33); -webkit-box-  
shadow:4px 4px 4px 4px rgb(34, 41, 33);  
box-shadow:4px 4px 4px 4px rgb(34, 41, 33)  
}
```

Background

The CSS property to change the background color of an element to HunterLab 14.2680, -3.3617, 2.7540 is called "background". The background property can be set on classes, ids or directly on the HTML element.

```
.background, #background, body{  
background: rgb(34, 41, 33) }
```

If only the background color should be changed can be used:

```
.background{ background-color: rgb(34, 41,  
33) }
```

This example shows the color as background, it is applied via the CSS property "background".

To optimize and compress your CSS code, you can use our [online CSS compressor and optimizer](#) based on csstidy. If you want to create a linear or radial gradient as background or border, check our [CSS Gradient Generator](#).

Hey! You found this booklet interesting? Support Converting Colors with the new Membership Option!

The pro membership hides all ads, plus gives you double the colors in the color bucket, and more awesome pro features!

[Learn more, Memberships starting at \\$2.50/m!](#)

**Follow me
on Twitter!**

@ConvertingColor