

# Converting Colors

HunterLab(14.4771, 11.5461,  
5.6471)

Have a look what the booklet for  
HunterLab(14.4771, 11.5461,  
5.6471) contains.

<b>HunterLab(14.5431, 11.5067, 5.6398)</b> .....	3
<b><i>Conversions</i></b> .....	4
<b><i>Details</i></b> .....	6
<b><i>Harmonies</i></b> .....	12
<b><i>Previews</i></b> .....	24
<b><i>Color Blindness Simulation</i></b> .....	28
<b><i>CSS Examples</i></b> .....	31

# Color

**HunterLab(14.5431, 11.5067,  
5.6398)**

# Conversions

## Conversions Part 1

Format	Color
Hex	451B18
RGB	69, 27, 24
RGB Percent	27%, 11%, 9%
CMY	0.7294, 0.8941, 0.9059
CMYK	0.00, 0.61, 0.65, 0.73
HSL	4°, 48%, 18%
HSV	4°, 65%, 27%
XYZ	3.0110, 2.1150, 1.1137
YIQ	39.2160, 25.9950, 7.9710

# Conversions

## Conversions Part 2

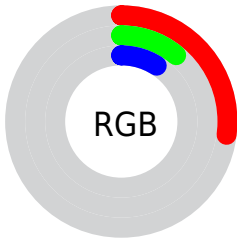
<b>Format</b>	<b>Color</b>
<b>RYB</b>	69, 27, 24
Decimal	4528920
CIELab	16.08, 19.93, 11.90
CIELCh	16, 23.213, 30.829
Yxy	2.1151, 0.4826, 0.3390
Android (android.graphics.Color)	4282719000 (0xFF451B18)
YUV	39.2160, -7.5015, 26.1206
Hunter-Lab	14.5431, 11.5067, 5.6398

# Details

The HunterLab color **14.5431, 11.5067, 5.6398** is a dark color, and the websafe version is hex **330000**. A complement of this color would be **21.2604, -8.6683, -2.7525**, and the grayscale version is **14.3313, -0.7647, 0.7786**.

A 20% lighter version of the original color is **30.0550, 13.1865, 8.2751**, and **2.2721, 3.8910, 1.4682** is the 20% darker color. If you saturate the color by 10%, you get **13.5144, 13.5491, 6.2200**, and if you desaturate by 10%, it is **15.7354, 9.4038, 5.0021**.

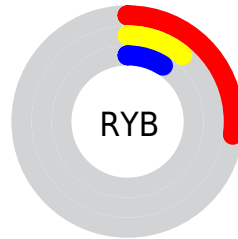
# Distribution



Red (27%)

Green (11%)

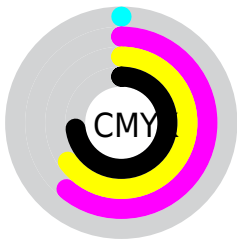
Blue (9%)



Red (27%)

Yellow (11%)

Blue (9%)

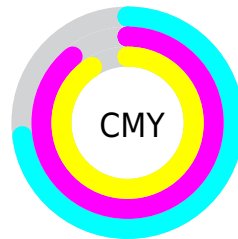


Cyan (0%)

Magenta (61%)

Yellow (65%)

Black (73%)



Cyan (73%)

Magenta (89%)

Yellow (91%)

# Brightness & Saturation Gradients

These gradients show how the HunterLab color 14.5431, 11.5067, 5.6398 changes by changing the brightness by 10 percent. The first figure shows a shift by +10% for each color and the second figure -10%.

Similar to the brightness gradients but the following saturation gradients show a change of the HunterLab color 14.5431, 11.5067, 5.6398 by changing the saturation by 10% instead.



■ 14.5431, 11.5067,  
5.6398

■ 14.5431, 11.5067,  
5.6398

■ 107.9645, 15.8473,  
17.0390

■ 8.2044, 10.8722,  
5.7431

■ 30.0831, 13.2317,  
8.3787

0.0000, INF, NaN

0.0000, NaN, NaN

■ 39.1510, 13.8856,  
9.6563

0.0000, NaN, NaN

■ 48.9821, 14.4264,  
10.9053

0.0000, NaN, NaN

0.0000, NaN, NaN

■ 59.5211, 14.8685,  
12.1382

0.0000, NaN, NaN

■ 70.7233, 15.2234,  
13.3631

0.0000, NaN, NaN

■ 82.5516, 15.5002,

0.0000, NaN, NaN

14.5858

■ 94.9744, 15.7062,  
15.8101

■ 14.5431, 11.5067,  
5.6398

■ 14.5431, 11.5067,  
5.6398

■ 13.5144, 13.5491,  
6.2200

■ 15.7354, 9.4038,  
5.0021

■ 12.6687, 15.4330,  
6.7057

■ 17.0689, 7.3133,  
4.3348

■ 11.9968, 17.0320,  
7.2221

■ 18.5245, 5.2752,  
3.6576

■ 11.6839, 17.8109,  
7.5114

■ 20.0849, 3.3097,  
2.9825

■ 21.7357, 1.4229,  
2.3162

■ 23.4650, -0.3866,  
1.6618

■ 25.2628, -2.1244,  
1.0201

■ 27.1211, -3.7980,  
0.3908

■ 29.0333, -5.4149,  
-0.2271

# Harmonies

## Analogous

The Analogous color harmony consists of three colors that are next to each other on the color wheel.



14.5435, 13.8504, 0.9617



14.5431, 11.5067, 5.6398



14.5435, 5.7890, 8.0553

# Triad

The Triadic color harmony groups three colors that are evenly spaced from another and form a triangle on the color wheel.



14.5435, 11.5056, 5.6400



14.5435, -10.1143, 5.4550



14.5435, -0.5965, -16.6814

# Complementary

The Complementary color scheme is a pair of colors which are on the opposite of each other on the color wheel.



14.5431, 11.5067, 5.6398



21.2604, -8.6683, -2.7525

# Split Complementary

Split-complementary colors differ from the complementary color scheme. The scheme consists of three colors, the original color and two neighbors of the complement color.



14.5435, -6.3514, -13.7742



14.5431, 11.5067, 5.6398



14.5435, -11.2329, 0.6195

# Square

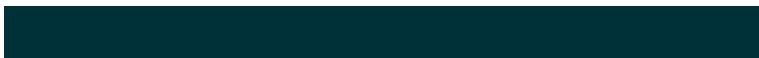
The Square scheme is like the rectangle color scheme, but the four colors are evenly spaced on the color wheel.



14.5435, 11.5056, 5.6400



14.5435, -6.6128, 7.9596



14.5435, -9.9829, -6.6626



14.5435, 6.1550, -13.4562



# Rectangle

The Rectangle color scheme consists of four colors that form a rectangle on the color wheel.



14.5431, 11.5067, 5.6398



14.5435, 1.2571, 8.8099



14.5435, -9.9829, -6.6626



14.5435, -2.7047, -16.3806

# Sweetspot

The Sweet Spot groups the original color and five complimentary colors.



14.5435, 11.5056, 5.6400



27.0330, 3.2044, 3.4911



15.2047, 17.5831, -10.4218



13.9212, 1.8372, 1.8765



64.8100, -3.4581, 3.5212



16.4960, -0.8802, 0.8963



# Same Dimension

The Same Dimension uses a secret algorithm to generate beautiful new colors.



14.5435, 11.5056, 5.6400



16.8828, 19.0831, 8.4724



18.8940, 2.2542, 8.9701



12.3598, 0.1212, 1.0186



16.7991, 26.5655, 10.8166



40.8270, 67.7416, 26.3433



# Inverse Universe

The Inverse Universe completely reimagines the original color for something new.



21.2604, -8.6683, -2.7525



27.0287, -12.2168, -4.4120



15.4538, -0.0963, -12.0798



12.9001, -1.4281, 0.3628



29.5056, -14.2968, -6.0167

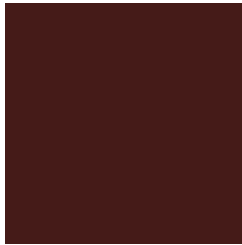


72.4810, -34.8494, -15.3652



# Previews

## White Background



This preview shows how the HunterLab color 14.5431, 11.5067, 5.6398 looks on a white background.

## Color Contrast Check

Large Text (above 18pt) WCAG AA ✓ Pass

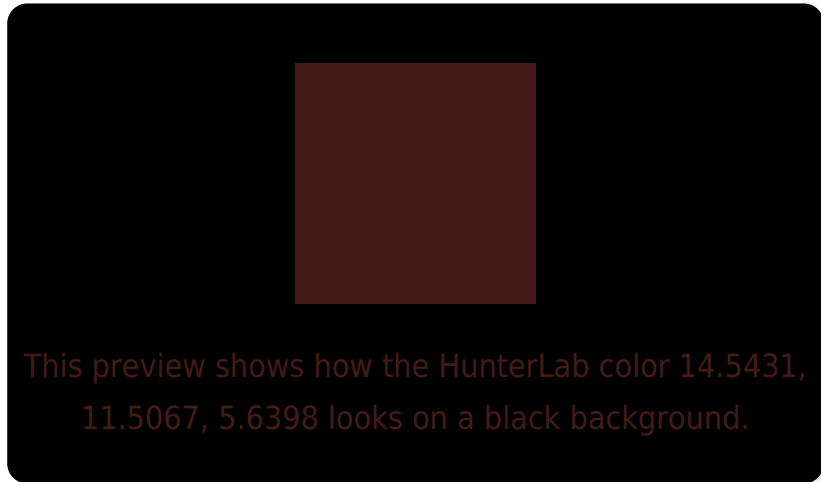
Any Text WCAG AA ✓ Pass

Large Text (above 18pt) WCAG AAA ✓ Pass

Any Text WCAG AAA ✓ Pass



# Black Background



## Color Contrast Check

Large Text (above 18pt) WCAG AA × Fail

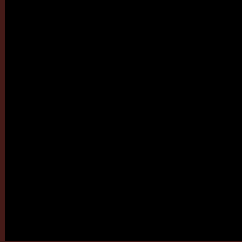
Any Text WCAG AA × Fail

Large Text (above 18pt) WCAG AAA × Fail

Any Text WCAG AAA × Fail

If you want to check with other color combinations, try the [Color Contrast Checker](#).

## HunterLab 14.5431, 11.5067, 5.6398 Background



This preview shows how black text looks on a background with the HunterLab color 14.5431, 11.5067, 5.6398.



This preview shows how white text looks on a background with the HunterLab color 14.5431, 11.5067,



# Color Blindness Simulation

Color vision deficiency is a very complex topic, and I could not describe the different causes any better than Wikipedia does, so if you want to learn more, you should check out their [article about color blindness](#).

## Dichromacy



### Original Color

14.5431, 11.5067, 5.6398

### Protanopia

14.8663, -1.3605, 4.5008

### Deuteranopia

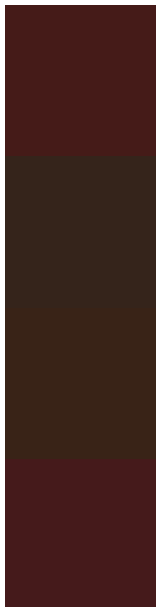
14.7888, 0.5014, 6.0784



## Tritanopia

14.4494, 12.1847, 4.6090

# Trichromacy



## Original Color

14.5431, 11.5067, 5.6398

## Protanomaly

14.4837, 2.9611, 4.7319

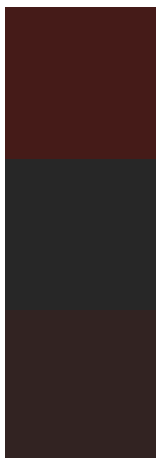
## Deuteranomaly

14.6075, 4.2902, 5.7860

## Tritanomaly

14.4331, 12.1100, 4.8460

# Monochromacy



## Original Color

14.5431, 11.5067, 5.6398

## Achromatopsia

14.2438, -0.7600, 0.7739

## Achromatomaly

14.1268, 3.1415, 2.4083

# CSS Examples

## Text

The CSS property to change the color of the text to HunterLab 14.5431, 11.5067, 5.6398 is called "color". The color property can be set on classes, ids or directly on the HTML element.

This example shows how text in the color `rgb(69, 27, 24)` looks like.

```
.text, #text, p{  
    color:rgb(69, 27, 24)  
}
```

If you want to add a text shadow in that color use the text-shadow property, you can generate a text shadow directly with our [CSS Text Shadow Generator](#).

Here you see how black text with a 4 pixel rgb(69, 27, 24) colored shadow looks like.

```
.shadow{ text-shadow: 4px 4px 2px rgb(69, 27, 24) }
```

## Border

The CSS property to change the border of an element to HunterLab 14.5431, 11.5067, 5.6398 is called "border". The border property can be set on classes, ids or directly on the HTML element.

This example shows the color as border, it can be applied via the CSS property "border" or "border-color".

```
.border, #border, table{ border:4px solid rgb(69, 27, 24) }
```



If only the border color should be changed use the property `border-color`.

```
.border{ border-color:rgb(69, 27, 24) }
```

If you want to add a box shadow in that color use:

Here you see how a box with a 4 pixel `rgb(69, 27, 24)` colored shadow looks like.

```
.boxshadow{ -moz-box-shadow:4px 4px 4px  
4px rgb(69, 27, 24); -webkit-box-  
shadow:4px 4px 4px 4px rgb(69, 27, 24);  
box-shadow:4px 4px 4px 4px rgb(69, 27, 24)  
}
```

# Background

The CSS property to change the background color of an element to HunterLab 14.5431, 11.5067, 5.6398 is called "background". The background property can be set on classes, ids or directly on the HTML element.

```
.background, #background, body{  
background: rgb(69, 27, 24) }
```

If only the background color should be changed can be used:

```
.background{ background-color: rgb(69, 27,  
24) }
```

This example shows the color as background, it is applied via the CSS property "background".

To optimize and compress your CSS code, you can use our [online CSS compressor and optimizer](#) based on csstidy. If you want to create a linear or radial gradient as background or border, check our [CSS Gradient Generator](#).

Hey! You found this booklet  
interesting? Support Converting  
Colors with the new Membership  
Option!

The pro membership hides all ads, plus gives you  
double the colors in the color bucket, and more  
awesome pro features!

**[Learn more, Memberships starting at \\$2.50/m!](#)**

**Follow me  
on Twitter!**

@ConvertingColor