

Converting Colors

HunterLab(14.4814, 13.6597,
5.6237)

Have a look what the booklet for
HunterLab(14.4814, 13.6597,
5.6237) contains.

HunterLab(14.4808, 13.6601, 5.6240)	3
<i>Conversions</i>	4
<i>Details</i>	6
<i>Harmonies</i>	12
<i>Previews</i>	24
<i>Color Blindness Simulation</i>	28
<i>CSS Examples</i>	31

Color

**HunterLab(14.4808, 13.6601,
5.6240)**

Conversions

Conversions Part 1

Format	Color
Hex	481818
RGB	72, 24, 24
RGB Percent	28%, 9%, 9%
CMY	0.7176, 0.9059, 0.9059
CMYK	0.00, 0.67, 0.67, 0.72
HSL	0°, 50%, 19%
HSV	0°, 67%, 28%
XYZ	3.1640, 2.0969, 1.1021
YIQ	38.3520, 28.6080, 10.1760

Conversions

Conversions Part 2

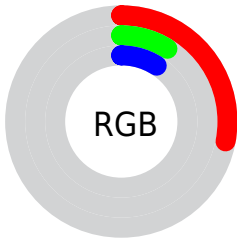
Format	Color
RYB	72, 24, 24
Decimal	4724760
CIELab	15.99, 22.96, 11.89
CIElCh	16, 25.857, 27.373
Yxy	2.0971, 0.4972, 0.3296
Android (android.graphics.Color)	4282914840 (0xFF481818)
YUV	38.3520, -7.0755, 29.5093
Hunter-Lab	14.4808, 13.6601, 5.6240

Details

The HunterLab color **14.4808, 13.6601, 5.6240** is a dark color, and the websafe version is hex **330000**. A complement of this color would be **23.0140, -10.3080, -1.7941**, and the grayscale version is **14.0512, -0.7497, 0.7634**.

A 20% lighter version of the original color is **30.1175, 15.5439, 8.3766**, and **3.0555, 5.2327, 1.9744** is the 20% darker color. If you saturate the color by 10%, you get **13.4625, 15.8136, 6.2728**, and if you desaturate by 10%, it is **15.7108, 11.3372, 4.9349**.

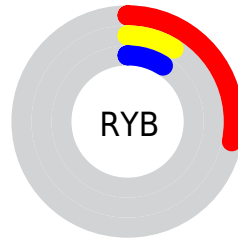
Distribution



Red (28%)

Green (9%)

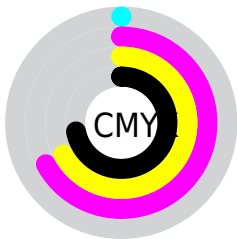
Blue (9%)



Red (28%)

Yellow (9%)

Blue (9%)

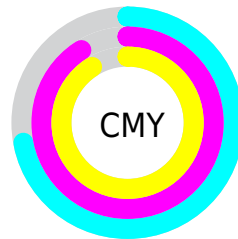


Cyan (0%)

Magenta (67%)

Yellow (67%)

Black (72%)



Cyan (72%)

Magenta (91%)

Yellow (91%)

Brightness & Saturation Gradients

These gradients show how the HunterLab color 14.4808, 13.6601, 5.6240 changes by changing the brightness by 10 percent. The first figure shows a shift by +10% for each color and the second figure -10%.

Similar to the brightness gradients but the following saturation gradients show a change of the HunterLab color 14.4808, 13.6601, 5.6240 by changing the saturation by 10% instead.

■ 14.4808, 13.6601,
5.6240

■ 14.4808, 13.6601,
5.6240

■ 107.8429, 19.2724,
17.0213

■ 8.1423, 12.9591,
5.6996

■ 30.0037, 15.7041,
8.3633

0.0000, INF, NaN

0.0000, NaN, NaN

■ 39.0643, 16.5112,
9.6407

0.0000, NaN, NaN

■ 48.8886, 17.1990,
10.8894

0.0000, NaN, NaN

0.0000, NaN, NaN

■ 59.4214, 17.7821,
12.1219

0.0000, NaN, NaN

■ 70.6177, 18.2722,
13.3466

0.0000, NaN, NaN

■ 82.4404, 18.6790,

0.0000, NaN, NaN

14.5689

■ 94.8579, 19.0102,
15.7928

■ 14.4808, 13.6601,
5.6240

■ 14.4808, 13.6601,
5.6240

■ 13.4625, 15.8136,
6.2728

■ 15.7108, 11.3372,
4.9349

■ 12.6777, 17.6505,
6.8317

■ 17.1240, 8.9649,
4.2418

■ 11.9798, 19.4401,
7.3811

■ 18.6945, 6.6166,
3.5681

■ 11.7380, 20.0997,
7.5848

■ 20.3986, 4.3324,
2.9255

■ 22.2166, 2.1293,
2.3183

■ 24.1320, 0.0099,
1.7461

■ 26.1317, -2.0299,
1.2067

■ 28.2050, -3.9981,
0.6966

■ 30.3430, -5.9034,
0.2122

Harmonies

Analogous

The Analogous color harmony consists of three colors that are next to each other on the color wheel.



14.4812, 15.7826, 0.1725



14.4808, 13.6601, 5.6240



14.4812, 7.4581, 8.4797

Triad

The Triadic color harmony groups three colors that are evenly spaced from another and form a triangle on the color wheel.



14.4812, 13.6589, 5.6243



14.4812, -10.6728, 6.2368



14.4812, -1.4016, -19.4588

Complementary

The Complementary color scheme is a pair of colors which are on the opposite of each other on the color wheel.



14.4808, 13.6601, 5.6240



23.0140, -10.3080, -1.7941

Split Complementary

Split-complementary colors differ from the complementary color scheme. The scheme consists of three colors, the original color and two neighbors of the complement color.



14.4812, -7.4979, -15.2337



14.4808, 13.6601, 5.6240



14.4812, -12.1561, 1.3781

Square

The Square scheme is like the rectangle color scheme, but the four colors are evenly spaced on the color wheel.



14.4812, 13.6589, 5.6243



14.4812, -6.5965, 8.8189



14.4812, -11.1175, -6.6541



14.4812, 6.1455, -16.4245

Rectangle

The Rectangle color scheme consists of four colors that form a rectangle on the color wheel.



14.4808, 13.6601, 5.6240



14.4812, 2.3738, 9.4686



14.4812, -11.1175, -6.6541



14.4812, -3.6729, -18.8078

Sweetspot

The Sweet Spot groups the original color and five complimentary colors.



14.4812, 13.6589, 5.6243



28.3028, 3.9983, 3.3844



15.8078, 19.4101, -12.9144



14.4359, 2.2796, 1.8068



65.8695, -3.5146, 3.5788



17.3419, -0.9253, 0.9422

Same Dimension

The Same Dimension uses a secret algorithm to generate beautiful new colors.



14.4812, 13.6589, 5.6243



17.0479, 22.5109, 8.7764



18.8615, 3.8469, 8.9733



12.3075, 0.2117, 0.9598



16.3652, 28.0239, 10.5748



40.4018, 69.1875, 26.1066

Inverse Universe

The Inverse Universe completely reimagines the original color for something new.



23.0140, -10.3080, -1.7941



30.0310, -14.8960, -2.8259



16.6613, -1.2664, -11.5726



12.9552, -1.5163, 0.4273



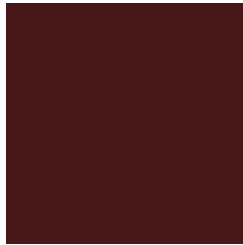
31.4922, -16.6945, -3.3239



77.7476, -41.2149, -8.2065

Previews

White Background



This preview shows how the HunterLab color 14.4808, 13.6601, 5.6240 looks on a white background.

Color Contrast Check

Large Text (above 18pt) WCAG AA ✓ Pass

Any Text WCAG AA ✓ Pass

Large Text (above 18pt) WCAG AAA ✓ Pass

Any Text WCAG AAA ✓ Pass

Black Background



Color Contrast Check

Large Text (above 18pt) WCAG AA × Fail

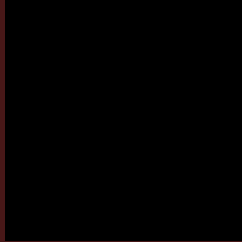
Any Text WCAG AA × Fail

Large Text (above 18pt) WCAG AAA × Fail

Any Text WCAG AAA × Fail

If you want to check with other color combinations, try the [Color Contrast Checker](#).

HunterLab 14.4808, 13.6601, 5.6240 Background



This preview shows how black text looks on a background with the HunterLab color 14.4808, 13.6601, 5.6240.



This preview shows how white text looks on a background with the HunterLab color 14.4808, 13.6601,

Color Blindness Simulation

Color vision deficiency is a very complex topic, and I could not describe the different causes any better than Wikipedia does, so if you want to learn more, you should check out their [article about color blindness](#).

Dichromacy



Original Color

14.4808, 13.6601, 5.6240

Protanopia

14.9006, -1.1713, 4.0031

Deuteranopia

14.7760, 0.4323, 6.2656



Tritanopia

14.4954, 13.7256, 5.4105

Trichromacy



Original Color

14.4808, 13.6601, 5.6240

Protanomaly

14.3881, 3.7512, 4.4044

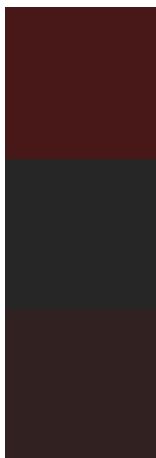
Deuteranomaly

14.4966, 4.9432, 5.9148

Tritanomaly

14.4954, 13.7256, 5.4105

Monochromacy



Original Color

14.4808, 13.6601, 5.6240

Achromatopsia

13.9221, -0.7428, 0.7564

Achromatomaly

13.6954, 3.8438, 2.2773

CSS Examples

Text

The CSS property to change the color of the text to HunterLab 14.4808, 13.6601, 5.6240 is called "color". The color property can be set on classes, ids or directly on the HTML element.

This example shows how text in the color `rgb(72, 24, 24)` looks like.

```
.text, #text, p{  
    color:rgb(72, 24, 24)  
}
```

If you want to add a text shadow in that color use the text-shadow property, you can generate a text shadow directly with our [CSS Text Shadow Generator](#).

Here you see how black text with a 4 pixel rgb(72, 24, 24) colored shadow looks like.

```
.shadow{ text-shadow: 4px 4px 2px rgb(72, 24, 24) }
```

Border

The CSS property to change the border of an element to HunterLab 14.4808, 13.6601, 5.6240 is called "border". The border property can be set on classes, ids or directly on the HTML element.

This example shows the color as border, it can be applied via the CSS property "border" or "border-color".

```
.border, #border, table{ border:4px solid rgb(72, 24, 24) }
```


If only the border color should be changed use the property border-color.

```
.border{ border-color:rgb(72, 24, 24) }
```

If you want to add a box shadow in that color use:

Here you see how a box with a 4 pixel rgb(72, 24, 24) colored shadow looks like.

```
.boxshadow{ -moz-box-shadow:4px 4px 4px  
4px rgb(72, 24, 24); -webkit-box-  
shadow:4px 4px 4px 4px rgb(72, 24, 24);  
box-shadow:4px 4px 4px 4px rgb(72, 24, 24)  
}
```

Background

The CSS property to change the background color of an element to HunterLab 14.4808, 13.6601, 5.6240 is called "background". The background property can be set on classes, ids or directly on the HTML element.

```
.background, #background, body{  
background: rgb(72, 24, 24) }
```

If only the background color should be changed can be used:

```
.background{ background-color: rgb(72, 24,  
24) }
```

This example shows the color as background, it is applied via the CSS property "background".

To optimize and compress your CSS code, you can use our [online CSS compressor and optimizer](#) based on csstidy. If you want to create a linear or radial gradient as background or border, check our [CSS Gradient Generator](#).

Hey! You found this booklet interesting? Support Converting Colors with the new Membership Option!

The pro membership hides all ads, plus gives you double the colors in the color bucket, and more awesome pro features!

[Learn more, Memberships starting at \\$2.50/m!](#)

**Follow me
on Twitter!**

@ConvertingColor