

Converting Colors

HunterLab(14.4890, 5.3272,
2.8317)

Have a look what the booklet for
HunterLab(14.4890, 5.3272, 2.8317)
contains.

HunterLab(14.4924, 5.3274, 2.8321)	3
<i>Conversions</i>	4
<i>Details</i>	6
<i>Harmonies</i>	12
<i>Previews</i>	24
<i>Color Blindness Simulation</i>	28
<i>CSS Examples</i>	31

Color

**HunterLab(14.4924, 5.3274,
2.8321)**

Conversions

Conversions Part 1

Format	Color
Hex	382222
RGB	56, 34, 34
RGB Percent	22%, 13%, 13%
CMY	0.7804, 0.8667, 0.8667
CMYK	0.00, 0.39, 0.39, 0.78
HSL	0°, 24%, 18%
HSV	0°, 39%, 22%
XYZ	2.4916, 2.1003, 1.7874
YIQ	40.5780, 13.1120, 4.6640

Conversions

Conversions Part 2

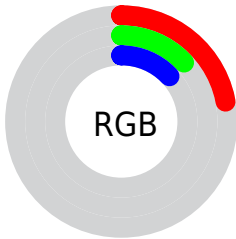
Format	Color
R_{YB}	56, 34, 34
Decimal	3678754
CIE _{Lab}	16.01, 10.58, 4.35
CIE _{LCh}	16, 11.438, 22.362
Yxy	2.1004, 0.3906, 0.3292
Android (android.graphics.Color)	4281868834 (0xFF382222)
YUV	40.5780, -3.2430, 13.5251
Hunter-Lab	14.4924, 5.3274, 2.8321

Details

The HunterLab color **14.4924, 5.3274, 2.8321** is a dark color, and the websafe version is hex **333333**. A complement of this color would be **18.5845, -5.7484, -0.5852**, and the grayscale version is **14.7614, -0.7876, 0.8020**.

A 20% lighter version of the original color is **30.1415, 5.7628, 4.4959**, and 0.0000, NaN, NaN is the 20% darker color. If you saturate the color by 10%, you get **13.3275, 7.0820, 3.3365**, and if you desaturate by 10%, it is **15.7547, 3.6157, 2.3499**.

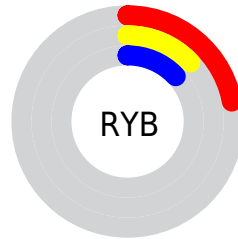
Distribution



Red (22%)

Green (13%)

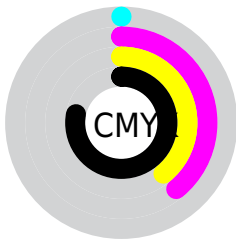
Blue (13%)



Red (22%)

Yellow (13%)

Blue (13%)

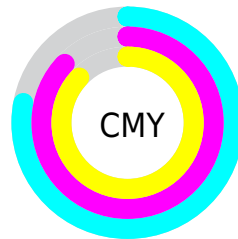


Cyan (0%)

Magenta (39%)

Yellow (39%)

Black (78%)



Cyan (78%)

Magenta (87%)

Yellow (87%)

Brightness & Saturation Gradients

These gradients show how the HunterLab color 14.4924, 5.3274, 2.8321 changes by changing the brightness by 10 percent. The first figure shows a shift by +10% for each color and the second figure -10%.

Similar to the brightness gradients but the following saturation gradients show a change of the HunterLab color 14.4924, 5.3274, 2.8321 by changing the saturation by 10% instead.

■ 14.4924, 5.3274,
2.8321

■ 14.4924, 5.3274,
2.8321

107.8654, 5.5055,
10.1042

■ 8.1538, 5.2378,
2.6561

■ 30.0184, 5.9521,
4.3208

0.0000, NaN, NaN

0.0000, NaN, NaN

■ 39.0804, 6.1009,
5.0844

0.0000, NaN, NaN

■ 48.9060, 6.1640,
5.8671

0.0000, NaN, NaN

■ 59.4399, 6.1525,
6.6706

0.0000, NaN, NaN

0.0000, NaN, NaN

■ 70.6373, 6.0750,
7.4958

0.0000, NaN, NaN

■ 82.4610, 5.9380,

0.0000, NaN, NaN

8.3431

94.8795, 5.7467,
9.2126

14.4924, 5.3274,
2.8321

14.4924, 5.3274,
2.8321

13.3275, 7.0820,
3.3365

15.7547, 3.6157,
2.3499

12.2751, 8.8528,
3.8541

17.0994, 1.9616,
1.8925

11.3537, 10.5879,
4.3691

18.5156, 0.3674,
1.4604

10.5818, 12.2085,
4.8564

19.9938, -1.1690,
1.0520

9.9208, 13.7461,
5.3241

21.5262, -2.6528,
0.6653

■ 9.2217, 15.5576,
5.8809

■ 23.1067, -4.0897,
0.2976

■ 9.1697, 15.7011,
5.9252

■ 24.7300, -5.4859,
-0.0533

■ 26.3919, -6.8470,
-0.3896

■ 28.0888, -8.1781,
-0.7134

Harmonies

Analogous

The Analogous color harmony consists of three colors that are next to each other on the color wheel.



14.4927, 5.7994, -0.0060



14.4924, 5.3274, 2.8321



14.4927, 3.1531, 4.6811

Triad

The Triadic color harmony groups three colors that are evenly spaced from another and form a triangle on the color wheel.



14.4927, 5.3267, 2.8324



14.4927, -5.3062, 3.9110



14.4927, -1.5781, -6.2432

Complementary

The Complementary color scheme is a pair of colors which are on the opposite of each other on the color wheel.



14.4924, 5.3274, 2.8321



18.5845, -5.7484, -0.5852

Split Complementary

Split-complementary colors differ from the complementary color scheme. The scheme consists of three colors, the original color and two neighbors of the complement color.



14.4927, -4.3230, -4.6158



14.4924, 5.3274, 2.8321



14.4927, -6.3513, 1.5411

Square

The Square scheme is like the rectangle color scheme, but the four colors are evenly spaced on the color wheel.



14.4927, 5.3267, 2.8324



14.4927, -3.0283, 5.2038



14.4927, -6.0075, -1.6037



14.4927, 1.6269, -5.6888

Rectangle

The Rectangle color scheme consists of four colors that form a rectangle on the color wheel.



14.4924, 5.3274, 2.8321



14.4927, 1.1261, 5.3102



14.4927, -6.0075, -1.6037



14.4927, -2.5811, -5.9229

Sweetspot

The Sweet Spot groups the original color and five complimentary colors.



14.4927, 5.3267, 2.8324



23.7188, 1.1721, 2.1059



15.0677, 8.1849, -5.2942



12.6806, 0.6495, 1.1335



61.6487, -3.2894, 3.3495



14.0024, -0.7471, 0.7608

Same Dimension

The Same Dimension uses a secret algorithm to generate beautiful new colors.



14.4927, 5.3267, 2.8324



17.5088, 9.3398, 4.3954



16.8316, 0.8541, 5.0556



10.1224, 0.1189, 0.7709



15.0504, 25.7720, 9.7252



38.8677, 66.5600, 25.1153

Inverse Universe

The Inverse Universe completely reimagines the original color for something new.



18.5845, -5.7484, -0.5852



24.1235, -8.7435, -1.1894



15.8189, -1.5959, -4.3033



10.6149, -1.1948, 0.3660



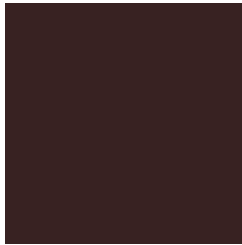
28.9617, -15.3529, -3.0572



74.7945, -39.6490, -7.8958

Previews

White Background



This preview shows how the HunterLab color 14.4924, 5.3274, 2.8321 looks on a white background.

Color Contrast Check

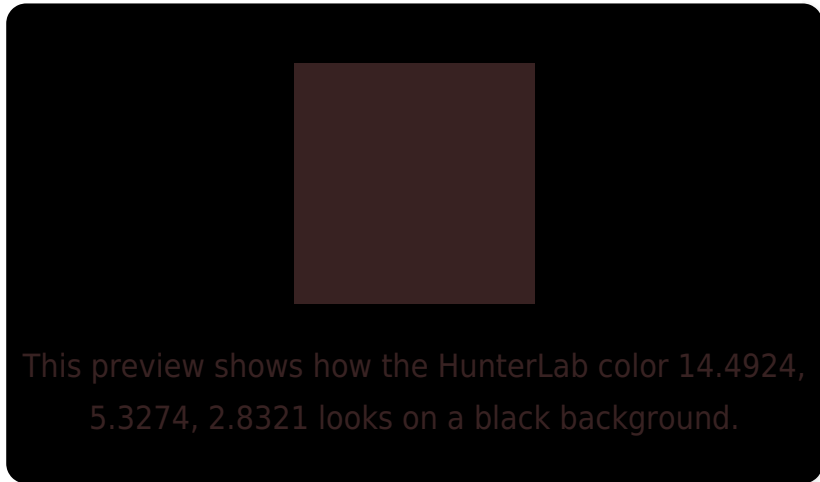
Large Text (above 18pt) WCAG AA ✓ Pass

Any Text WCAG AA ✓ Pass

Large Text (above 18pt) WCAG AAA ✓ Pass

Any Text WCAG AAA ✓ Pass

Black Background



Color Contrast Check

Large Text (above 18pt) WCAG AA × Fail

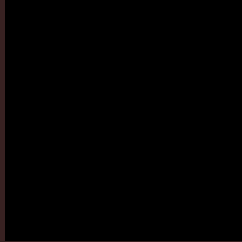
Any Text WCAG AA × Fail

Large Text (above 18pt) WCAG AAA × Fail

Any Text WCAG AAA × Fail

If you want to check with other color combinations, try the [Color Contrast Checker](#).

HunterLab 14.4924, 5.3274, 2.8321 Background



This preview shows how black text looks on a background with the HunterLab color 14.4924, 5.3274, 2.8321.

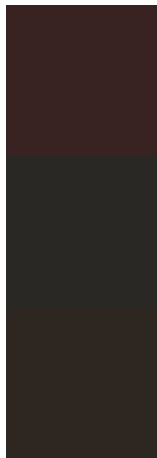


This preview shows how white text looks on a background with the HunterLab color 14.4924, 5.3274,

Color Blindness Simulation

Color vision deficiency is a very complex topic, and I could not describe the different causes any better than Wikipedia does, so if you want to learn more, you should check out their [article about color blindness](#).

Dichromacy



Original Color

14.4924, 5.3274, 2.8321

Protanopia

14.6403, -0.6560, 1.9217

Deuteranopia

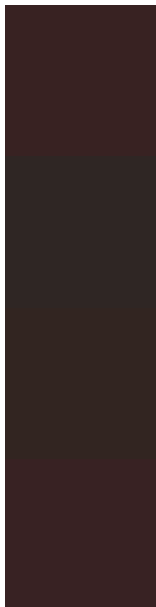
14.6345, 0.3300, 3.1942



Tritanopia

14.5334, 5.5341, 2.2432

Trichromacy



Original Color

14.4924, 5.3274, 2.8321

Protanomaly

14.5531, 1.3177, 2.1908

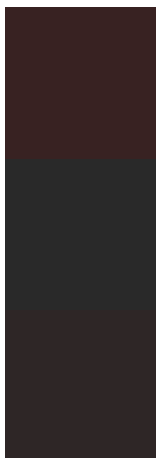
Deuteranomaly

14.5295, 2.2337, 3.1206

Tritanomaly

14.5126, 5.4294, 2.5414

Monochromacy



Original Color

14.4924, 5.3274, 2.8321

Achromatopsia

14.8909, -0.7945, 0.8091

Achromatomaly

14.5155, 1.2787, 1.4768

CSS Examples

Text

The CSS property to change the color of the text to HunterLab 14.4924, 5.3274, 2.8321 is called "color". The color property can be set on classes, ids or directly on the HTML element.

This example shows how text in the color `rgb(56, 34, 34)` looks like.

```
.text, #text, p{  
    color:rgb(56, 34, 34)  
}
```

If you want to add a text shadow in that color use the text-shadow property, you can generate a text shadow directly with our [CSS Text Shadow Generator](#).

Here you see how black text with a 4 pixel rgb(56, 34, 34) colored shadow looks like.

```
.shadow{ text-shadow: 4px 4px 2px rgb(56, 34, 34) }
```

Border

The CSS property to change the border of an element to HunterLab 14.4924, 5.3274, 2.8321 is called "border".

The border property can be set on classes, ids or directly on the HTML element.

This example shows the color as border, it can be applied via the CSS property "border" or "border-color".

```
.border, #border, table{ border:4px solid rgb(56, 34, 34) }
```


If only the border color should be changed use the property border-color.

```
.border{ border-color:rgb(56, 34, 34) }
```

If you want to add a box shadow in that color use:

Here you see how a box with a 4 pixel rgb(56, 34, 34) colored shadow looks like.

```
.boxshadow{ -moz-box-shadow:4px 4px 4px  
4px rgb(56, 34, 34); -webkit-box-  
shadow:4px 4px 4px 4px rgb(56, 34, 34);  
box-shadow:4px 4px 4px 4px rgb(56, 34, 34)  
}
```

Background

The CSS property to change the background color of an element to HunterLab 14.4924, 5.3274, 2.8321 is called "background". The background property can be set on classes, ids or directly on the HTML element.

```
.background, #background, body{  
background: rgb(56, 34, 34) }
```

If only the background color should be changed can be used:

```
.background{ background-color: rgb(56, 34,  
34) }
```

This example shows the color as background, it is applied via the CSS property "background".

To optimize and compress your CSS code, you can use our [online CSS compressor and optimizer](#) based on csstidy. If you want to create a linear or radial gradient as background or border, check our [CSS Gradient Generator](#).

Hey! You found this booklet interesting? Support Converting Colors with the new Membership Option!

The pro membership hides all ads, plus gives you double the colors in the color bucket, and more awesome pro features!

[Learn more, Memberships starting at \\$2.50/m!](#)

**Follow me
on Twitter!**

@ConvertingColor