

Converting Colors

HunterLab(14.9239, 8.6792,
3.1456)

Have a look what the booklet for
HunterLab(14.9239, 8.6792, 3.1456)
contains.

HunterLab(14.9812, 8.7442, 3.0914)	3
<i>Conversions</i>	4
<i>Details</i>	6
<i>Harmonies</i>	12
<i>Previews</i>	24
<i>Color Blindness Simulation</i>	28
<i>CSS Examples</i>	31

Color

**HunterLab(14.9812, 8.7442,
3.0914)**

Conversions

Conversions Part 1

Format	Color
Hex	402023
RGB	64, 32, 35
RGB Percent	25%, 13%, 14%
CMY	0.7490, 0.8745, 0.8627
CMYK	0.00, 0.50, 0.45, 0.75
HSL	354°, 33%, 19%
HSV	354°, 50%, 25%
XYZ	2.9342, 2.2444, 1.8687
YIQ	41.9100, 18.1090, 7.7170

Conversions

Conversions Part 2

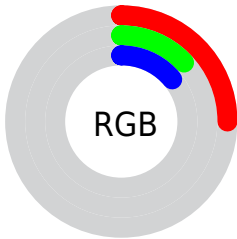
Format	Color
R_{YB}	64, 32, 35
Decimal	4202531
CIE _{Lab}	16.72, 15.81, 4.83
CIE _{LCh}	17, 16.533, 16.975
Yxy	2.2445, 0.4164, 0.3185
Android (android.graphics.Color)	4282392611 (0xFF402023)
YUV	41.9100, -3.4066, 19.3729
Hunter-Lab	14.9812, 8.7442, 3.0914

Details

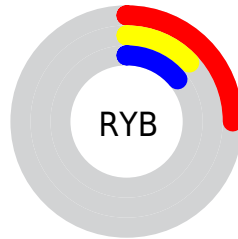
The HunterLab color **14.9812, 8.7442, 3.0914** is a dark color, and the websafe version is hex **663333**. A complement of this color would be **20.7626, -8.2090, 0.0421**, and the grayscale version is **15.1938, -0.8107, 0.8255**.

A 20% lighter version of the original color is **30.6316, 9.7678, 4.7283**, and **1.6066, 2.7514, 1.0382** is the 20% darker color. If you saturate the color by 10%, you get **13.7876, 10.8174, 3.6307**, and if you desaturate by 10%, it is **16.3119, 6.6594, 2.6089**.

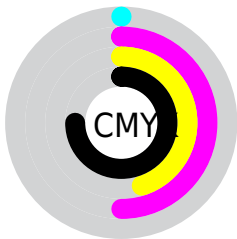
Distribution



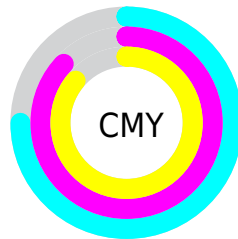
- Red (25%)
- Green (13%)
- Blue (14%)



- Red (25%)
- Yellow (13%)
- Blue (14%)



- Cyan (0%)
- Magenta (50%)
- Yellow (45%)
- Black (75%)



- Cyan (75%)
- Magenta (87%)
- Yellow (86%)

Brightness & Saturation Gradients

These gradients show how the HunterLab color 14.9812, 8.7442, 3.0914 changes by changing the brightness by 10 percent. The first figure shows a shift by +10% for each color and the second figure -10%.

Similar to the brightness gradients but the following saturation gradients show a change of the HunterLab color 14.9812, 8.7442, 3.0914 by changing the saturation by 10% instead.

■ 14.9812, 8.7442,
3.0914

■ 14.9812, 8.7442,
3.0914

■ 108.8160, 11.2445,
10.6221

■ 8.6260, 8.0625,
2.7891

■ 30.6402, 9.9880,
4.6546

0.0000, INF, NaN

0.0000, NaN, NaN

■ 39.7589, 10.4186,
5.4501

0.0000, NaN, NaN

■ 49.6369, 10.7477,
6.2622

0.0000, NaN, NaN

0.0000, NaN, NaN

■ 60.2197, 10.9885,
7.0931

0.0000, NaN, NaN

■ 71.4631, 11.1513,
7.9440

0.0000, NaN, NaN

■ 83.3304, 11.2442,

0.0000, NaN, NaN

8.8157

95.7903, 11.2735,
9.7083

14.9812, 8.7442,
3.0914

14.9812, 8.7442,
3.0914

13.7876, 10.8174,
3.6307

16.3119, 6.6594,
2.6089

12.7518, 12.8104,
4.2145

17.7587, 4.6075,
2.1851

11.8961, 14.6188,
4.8190

19.3052, 2.6085,
1.8176

11.2028, 16.2294,
5.3803

20.9372, 0.6698,
1.5012

10.5032, 18.1112,
5.8168

22.6433, -1.2087,
1.2301

■ 10.5030, 18.1118,
5.8169

■ 24.4141, -3.0313,
0.9985

■ 26.2419, -4.8038,
0.8009

■ 28.1205, -6.5325,
0.6326

■ 30.0447, -8.2235,
0.4896

Harmonies

Analogous

The Analogous color harmony consists of three colors that are next to each other on the color wheel.



14.9816, 8.9410, -1.2302



14.9812, 8.7442, 3.0914



14.9816, 5.7996, 5.7951

Triad

The Triadic color harmony groups three colors that are evenly spaced from another and form a triangle on the color wheel.



14.9816, 8.7434, 3.0917



14.9816, -6.7909, 5.5345



14.9816, -2.7620, -10.0593

Complementary

The Complementary color scheme is a pair of colors which are on the opposite of each other on the color wheel.



14.9812, 8.7442, 3.0914



20.7626, -8.2090, 0.0421

Split Complementary

Split-complementary colors differ from the complementary color scheme. The scheme consists of three colors, the original color and two neighbors of the complement color.



14.9816, -6.4244, -6.8277



14.9812, 8.7442, 3.0914



14.9816, -8.5521, 2.6081

Square

The Square scheme is like the rectangle color scheme, but the four colors are evenly spaced on the color wheel.



14.9816, 8.7434, 3.0917



14.9816, -3.3216, 6.8856



14.9816, -8.4267, -1.8855



14.9816, 1.8999, -9.8096

Rectangle

The Rectangle color scheme consists of four colors that form a rectangle on the color wheel.



14.9812, 8.7442, 3.0914



14.9816, 2.8587, 6.7205



14.9816, -8.4267, -1.8855



14.9816, -4.1385, -9.3107

Sweetspot

The Sweet Spot groups the original color and five complimentary colors.



14.9816, 8.7434, 3.0917



26.3492, 2.3226, 2.2065



15.4566, 11.6864, -8.8771



13.7287, 1.3410, 1.1783



63.7533, -3.4017, 3.4638



15.6573, -0.8354, 0.8507

Same Dimension

The Same Dimension uses a secret algorithm to generate beautiful new colors.



14.9816, 8.7434, 3.0917



17.7734, 14.9758, 4.9861



17.4812, 3.1645, 6.1921



11.5781, 0.2174, 0.7981



15.9869, 27.5024, 9.3656



39.9569, 68.5631, 24.7669

Inverse Universe

The Inverse Universe completely reimagines the original color for something new.



14.9816, 8.7434, 3.0917



17.7734, 14.9758, 4.9861



17.5001, -2.9448, -5.7015



11.5781, 0.2174, 0.7981



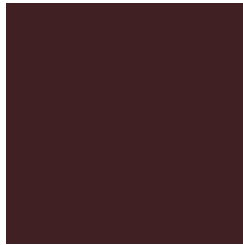
15.9869, 27.5024, 9.3656



39.9569, 68.5631, 24.7669

Previews

White Background



This preview shows how the HunterLab color 14.9812, 8.7442, 3.0914 looks on a white background.

Color Contrast Check

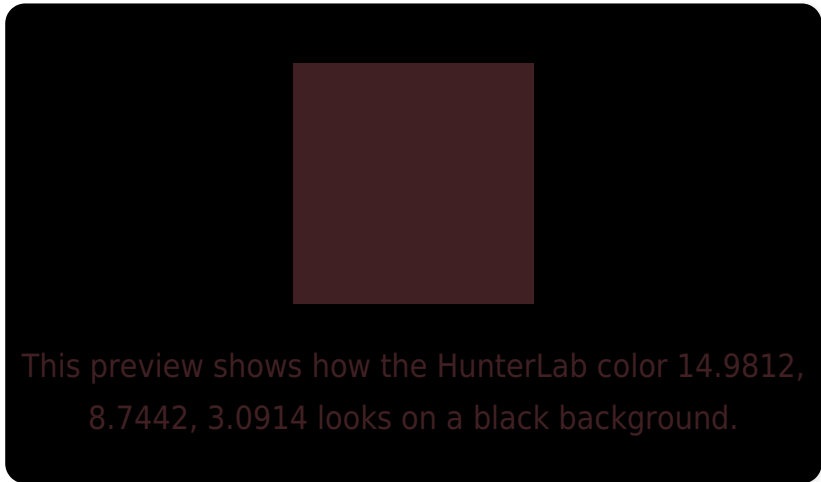
Large Text (above 18pt) WCAG AA ✓ Pass

Any Text WCAG AA ✓ Pass

Large Text (above 18pt) WCAG AAA ✓ Pass

Any Text WCAG AAA ✓ Pass

Black Background



Color Contrast Check

Large Text (above 18pt) WCAG AA × Fail

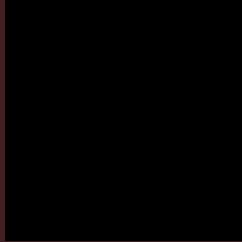
Any Text WCAG AA × Fail

Large Text (above 18pt) WCAG AAA × Fail

Any Text WCAG AAA × Fail

If you want to check with other color combinations, try the [Color Contrast Checker](#).

HunterLab 14.9812, 8.7442, 3.0914 Background



This preview shows how black text looks on a background with the HunterLab color 14.9812, 8.7442, 3.0914.

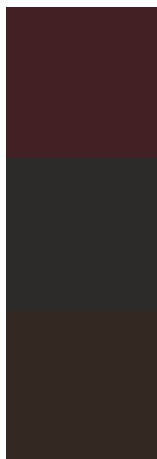


This preview shows how white text looks on a background with the HunterLab color 14.9812, 8.7442,

Color Blindness Simulation

Color vision deficiency is a very complex topic, and I could not describe the different causes any better than Wikipedia does, so if you want to learn more, you should check out their [article about color blindness](#).

Dichromacy



Original Color

14.9812, 8.7442, 3.0914

Protanopia

15.2405, -0.8193, 1.5671

Deuteranopia

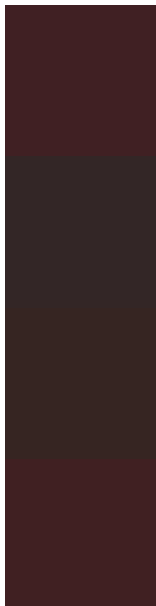
15.1197, 0.8610, 3.3972



Tritanopia

14.9616, 8.6494, 3.3735

Trichromacy



Original Color

14.9812, 8.7442, 3.0914

Protanomaly

14.9331, 2.6531, 1.9676

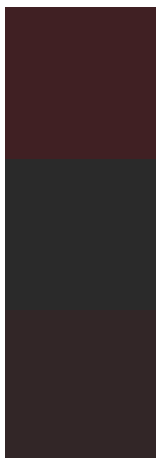
Deuteranomaly

14.9094, 3.4996, 3.2301

Tritanomaly

14.9616, 8.6494, 3.3735

Monochromacy



Original Color

14.9812, 8.7442, 3.0914

Achromatopsia

15.2162, -0.8119, 0.8267

Achromatomaly

14.8688, 2.4880, 1.5518

CSS Examples

Text

The CSS property to change the color of the text to HunterLab 14.9812, 8.7442, 3.0914 is called "color". The color property can be set on classes, ids or directly on the HTML element.

This example shows how text in the color `rgb(64, 32, 35)` looks like.

```
.text, #text, p{  
    color:rgb(64, 32, 35)  
}
```

If you want to add a text shadow in that color use the text-shadow property, you can generate a text shadow directly with our [CSS Text Shadow Generator](#).

Here you see how black text with a 4 pixel rgb(64, 32, 35) colored shadow looks like.

```
.shadow{ text-shadow: 4px 4px 2px rgb(64, 32, 35) }
```

Border

The CSS property to change the border of an element to HunterLab 14.9812, 8.7442, 3.0914 is called "border".

The border property can be set on classes, ids or directly on the HTML element.

This example shows the color as border, it can be applied via the CSS property "border" or "border-color".

```
.border, #border, table{ border:4px solid rgb(64, 32, 35) }
```


If only the border color should be changed use the property `border-color`.

```
.border{ border-color:rgb(64, 32, 35) }
```

If you want to add a box shadow in that color use:

Here you see how a box with a 4 pixel `rgb(64, 32, 35)` colored shadow looks like.

```
.boxshadow{ -moz-box-shadow:4px 4px 4px  
4px rgb(64, 32, 35); -webkit-box-  
shadow:4px 4px 4px 4px rgb(64, 32, 35);  
box-shadow:4px 4px 4px 4px rgb(64, 32, 35)  
}
```

Background

The CSS property to change the background color of an element to HunterLab 14.9812, 8.7442, 3.0914 is called "background". The background property can be set on classes, ids or directly on the HTML element.

```
.background, #background, body{  
background: rgb(64, 32, 35) }
```

If only the background color should be changed can be used:

```
.background{ background-color: rgb(64, 32,  
35) }
```

This example shows the color as background, it is applied via the CSS property "background".

To optimize and compress your CSS code, you can use our [online CSS compressor and optimizer](#) based on csstidy. If you want to create a linear or radial gradient as background or border, check our [CSS Gradient Generator](#).

Hey! You found this booklet interesting? Support Converting Colors with the new Membership Option!

The pro membership hides all ads, plus gives you double the colors in the color bucket, and more awesome pro features!

[Learn more, Memberships starting at \\$2.50/m!](#)

**Follow me
on Twitter!**

@ConvertingColor