

Converting Colors

HunterLab(15.0606, 5.9851,
2.3890)

Have a look what the booklet for
HunterLab(15.0606, 5.9851, 2.3890)
contains.

HunterLab(15.0514, 6.1381, 2.4875)	3
<i>Conversions</i>	4
<i>Details</i>	6
<i>Harmonies</i>	12
<i>Previews</i>	24
<i>Color Blindness Simulation</i>	28
<i>CSS Examples</i>	31

Color

**HunterLab(15.0514, 6.1381,
2.4875)**

Conversions

Conversions Part 1

Format	Color
Hex	3B2325
RGB	59, 35, 37
RGB Percent	23%, 14%, 15%
CMY	0.7686, 0.8627, 0.8549
CMYK	0.00, 0.41, 0.37, 0.77
HSL	355°, 26%, 18%
HSV	355°, 41%, 23%
XYZ	2.7386, 2.2654, 2.0432
YIQ	42.4040, 13.6620, 5.7100

Conversions

Conversions Part 2

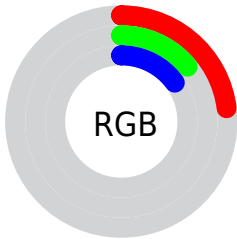
Format	Color
R_{YB}	59, 35, 37
Decimal	3875621
CIE _{Lab}	16.82, 11.81, 3.44
CIE _{LCh}	17, 12.299, 16.265
Yxy	2.2656, 0.3886, 0.3215
Android (android.graphics.Color)	4282065701 (0xFF3B2325)
YUV	42.4040, -2.6642, 14.5547
Hunter-Lab	15.0514, 6.1381, 2.4875

Details

The HunterLab color **15.0514, 6.1381, 2.4875** is a dark color, and the websafe version is hex **333333**. A complement of this color would be **19.4441, -6.5258, 0.0631**, and the grayscale version is **15.3536, -0.8192, 0.8342**.

A 20% lighter version of the original color is **30.7771, 6.7768, 3.7054**, and 0.0000, NaN, NaN is the 20% darker color. If you saturate the color by 10%, you get **13.8406, 8.0301, 2.9392**, and if you desaturate by 10%, it is **16.3677, 4.2748, 2.0861**.

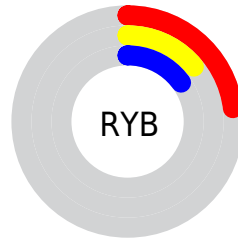
Distribution



Red (23%)

Green (14%)

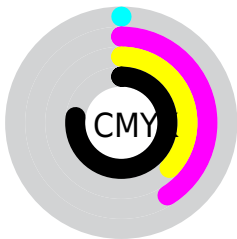
Blue (15%)



Red (23%)

Yellow (14%)

Blue (15%)

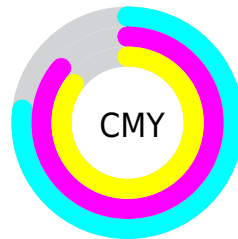


Cyan (0%)

Magenta (41%)

Yellow (37%)

Black (77%)



Cyan (77%)

Magenta (86%)

Yellow (85%)

Brightness & Saturation Gradients

These gradients show how the HunterLab color 15.0514, 6.1381, 2.4875 changes by changing the brightness by 10 percent. The first figure shows a shift by +10% for each color and the second figure -10%.

Similar to the brightness gradients but the following saturation gradients show a change of the HunterLab color 15.0514, 6.1381, 2.4875 by changing the saturation by 10% instead.

■ 15.0514, 6.1381,
2.4875

■ 15.0514, 6.1381,
2.4875

■ 108.9518, 6.8253,
9.3072

■ 8.6913, 5.6795,
2.1159

■ 30.7292, 6.8966,
3.8394

0.0000, NaN, NaN

0.0000, NaN, NaN

■ 39.8561, 7.1070,
4.5469

0.0000, NaN, NaN

■ 49.7415, 7.2284,
5.2785

0.0000, NaN, NaN

0.0000, NaN, NaN

■ 60.3312, 7.2724,
6.0350

0.0000, NaN, NaN

■ 71.5812, 7.2480,
6.8163

0.0000, NaN, NaN

■ 83.4547, 7.1618,

0.0000, NaN, NaN

7.6224

95.9205, 7.0194,
8.4528

15.0514, 6.1381,
2.4875

15.0514, 6.1381,
2.4875

13.8406, 8.0301,
2.9392

16.3677, 4.2748,
2.0861

12.7517, 9.9163,
3.4372

17.7734, 2.4606,
1.7325

11.8044, 11.7336,
3.9707

19.2563, 0.7015,
1.4231

11.0183, 13.3914,
4.5178

20.8062, -1.0027,
1.1532

10.3492, 14.9683,
5.0012

22.4146, -2.6558,
0.9177

■ 9.6983, 16.7197,
5.4063

■ 24.0747, -4.2629,
0.7122

■ 25.7808, -5.8297,
0.5325

■ 27.5283, -7.3619,
0.3752

■ 29.3134, -8.8644,
0.2372

Harmonies

Analogous

The Analogous color harmony consists of three colors that are next to each other on the color wheel.



15.0518, 6.2268, -0.7638



15.0514, 6.1381, 2.4875



15.0518, 4.0822, 4.7155

Triad

The Triadic color harmony groups three colors that are evenly spaced from another and form a triangle on the color wheel.



15.0518, 6.1374, 2.4878



15.0518, -5.3198, 4.5739



15.0518, -2.3528, -6.7251

Complementary

The Complementary color scheme is a pair of colors which are on the opposite of each other on the color wheel.



15.0514, 6.1381, 2.4875



19.4441, -6.5258, 0.0631

Split Complementary

Split-complementary colors differ from the complementary color scheme. The scheme consists of three colors, the original color and two neighbors of the complement color.



15.0518, -5.1367, -4.5143



15.0514, 6.1381, 2.4875



15.0518, -6.7421, 2.2472

Square

The Square scheme is like the rectangle color scheme, but the four colors are evenly spaced on the color wheel.



15.0518, 6.1374, 2.4878



15.0518, -2.6240, 5.7203



15.0518, -6.6783, -1.0651



15.0518, 1.1070, -6.6191

Rectangle

The Rectangle color scheme consists of four colors that form a rectangle on the color wheel.



15.0514, 6.1381, 2.4875



15.0518, 1.9715, 5.5413



15.0518, -6.6783, -1.0651



15.0518, -3.3918, -6.2100

Sweetspot

The Sweet Spot groups the original color and five complimentary colors.



15.0518, 6.1374, 2.4878



24.5518, 1.3294, 1.9127



15.4525, 8.5121, -6.2052



12.6904, 0.7027, 0.9922



61.6487, -3.2894, 3.3495



14.0024, -0.7471, 0.7608

Same Dimension

The Same Dimension uses a secret algorithm to generate beautiful new colors.



15.0518, 6.1374, 2.4878



17.8248, 10.5331, 3.8391



17.1115, 1.8240, 5.0659



10.8483, 0.1794, 0.7536



15.5417, 26.7264, 9.1839



39.4350, 67.6483, 24.5926

Inverse Universe

The Inverse Universe completely reimagines the original color for something new.



15.0518, 6.1374, 2.4878



17.8248, 10.5331, 3.8391



16.9406, -2.4507, -4.0857



10.8483, 0.1794, 0.7536



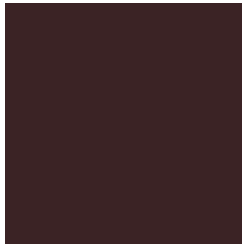
15.5417, 26.7264, 9.1839



39.4350, 67.6483, 24.5926

Previews

White Background



This preview shows how the HunterLab color 15.0514, 6.1381, 2.4875 looks on a white background.

Color Contrast Check

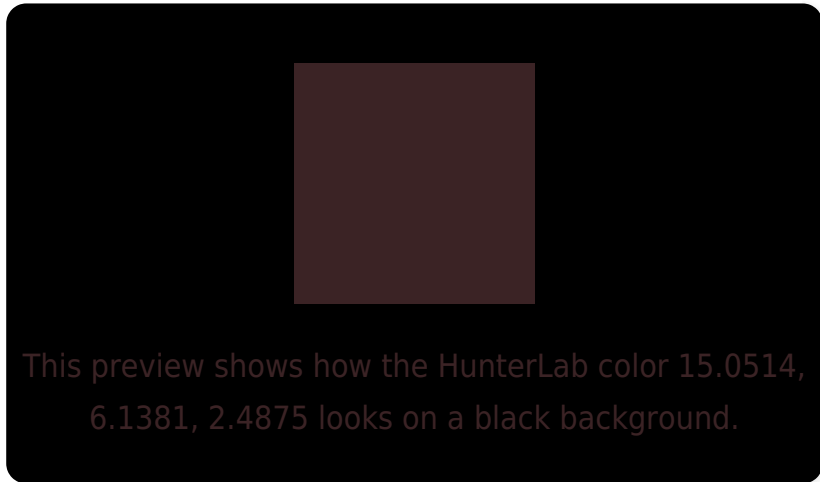
Large Text (above 18pt) WCAG AA ✓ Pass

Any Text WCAG AA ✓ Pass

Large Text (above 18pt) WCAG AAA ✓ Pass

Any Text WCAG AAA ✓ Pass

Black Background



Color Contrast Check

Large Text (above 18pt) WCAG AA × Fail

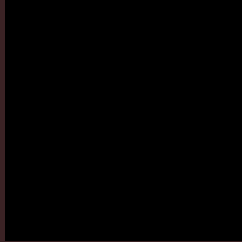
Any Text WCAG AA × Fail

Large Text (above 18pt) WCAG AAA × Fail

Any Text WCAG AAA × Fail

If you want to check with other color combinations, try the [Color Contrast Checker](#).

HunterLab 15.0514, 6.1381, 2.4875 Background



This preview shows how black text looks on a background with the HunterLab color 15.0514, 6.1381, 2.4875.



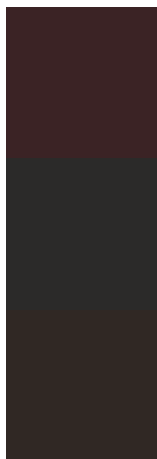
This preview shows how white text looks on a background with the HunterLab color 15.0514, 6.1381,

2.4875.

Color Blindness Simulation

Color vision deficiency is a very complex topic, and I could not describe the different causes any better than Wikipedia does, so if you want to learn more, you should check out their [article about color blindness](#).

Dichromacy



Original Color

15.0514, 6.1381, 2.4875

Protanopia

15.2631, -0.6955, 1.2438

Deuteranopia

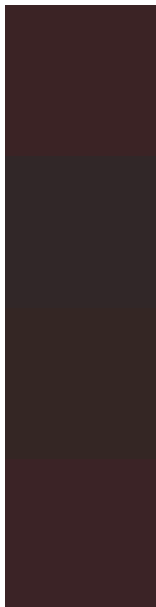
15.0776, 0.7978, 2.7414



Tritanopia

15.0725, 6.2441, 2.1837

Trichromacy



Original Color

15.0514, 6.1381, 2.4875

Protanomaly

15.0240, 1.9271, 1.3692

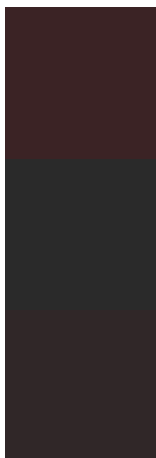
Deuteranomaly

14.9789, 2.7176, 2.6709

Tritanomaly

15.0725, 6.2441, 2.1837

Monochromacy



Original Color

15.0514, 6.1381, 2.4875

Achromatopsia

15.2162, -0.8119, 0.8267

Achromatomaly

14.9419, 1.6558, 1.2704

CSS Examples

Text

The CSS property to change the color of the text to HunterLab 15.0514, 6.1381, 2.4875 is called "color". The color property can be set on classes, ids or directly on the HTML element.

This example shows how text in the color `rgb(59, 35, 37)` looks like.

```
.text, #text, p{  
    color:rgb(59, 35, 37)  
}
```

If you want to add a text shadow in that color use the text-shadow property, you can generate a text shadow directly with our [CSS Text Shadow Generator](#).

Here you see how black text with a 4 pixel rgb(59, 35, 37) colored shadow looks like.

```
.shadow{ text-shadow: 4px 4px 2px rgb(59, 35, 37) }
```

Border

The CSS property to change the border of an element to HunterLab 15.0514, 6.1381, 2.4875 is called "border". The border property can be set on classes, ids or directly on the HTML element.

This example shows the color as border, it can be applied via the CSS property "border" or "border-color".

```
.border, #border, table{ border:4px solid rgb(59, 35, 37) }
```


If only the border color should be changed use the property `border-color`.

```
.border{ border-color:rgb(59, 35, 37) }
```

If you want to add a box shadow in that color use:

Here you see how a box with a 4 pixel `rgb(59, 35, 37)` colored shadow looks like.

```
.boxshadow{ -moz-box-shadow:4px 4px 4px  
4px rgb(59, 35, 37); -webkit-box-  
shadow:4px 4px 4px 4px rgb(59, 35, 37);  
box-shadow:4px 4px 4px 4px rgb(59, 35, 37)  
}
```

Background

The CSS property to change the background color of an element to HunterLab 15.0514, 6.1381, 2.4875 is called "background". The background property can be set on classes, ids or directly on the HTML element.

```
.background, #background, body{  
background: rgb(59, 35, 37) }
```

If only the background color should be changed can be used:

```
.background{ background-color: rgb(59, 35,  
37) }
```

This example shows the color as background, it is applied via the CSS property "background".

To optimize and compress your CSS code, you can use our [online CSS compressor and optimizer](#) based on csstidy. If you want to create a linear or radial gradient as background or border, check our [CSS Gradient Generator](#).

Hey! You found this booklet interesting? Support Converting Colors with the new Membership Option!

The pro membership hides all ads, plus gives you double the colors in the color bucket, and more awesome pro features!

[Learn more, Memberships starting at \\$2.50/m!](#)

**Follow me
on Twitter!**

@ConvertingColor