

Converting Colors

HunterLab(15.2271, 10.7365,
6.9939)

Have a look what the booklet for
HunterLab(15.2271, 10.7365,
6.9939) contains.

HunterLab(15.2271, 10.7365, 6.9939)	3
<i>Conversions</i>	4
<i>Details</i>	6
<i>Harmonies</i>	12
<i>Previews</i>	24
<i>Color Blindness Simulation</i>	28
<i>CSS Examples</i>	31

Color

**HunterLab(15.2271, 10.7365,
6.9939)**

Conversions

Conversions Part 1

Format	Color
Hex	471E14
RGB	71, 30, 20
RGB Percent	28%, 12%, 8%
CMY	0.7216, 0.8823, 0.9216
CMYK	0.00, 0.58, 0.72, 0.72
HSL	12°, 56%, 18%
HSV	12°, 72%, 28%
XYZ	3.1891, 2.3186, 0.9413
YIQ	41.1190, 27.6460, 5.5820

Conversions

Conversions Part 2

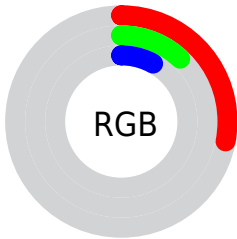
Format	Color
RYB	71, 32, 20
Decimal	4660756
CIELab	17.08, 18.69, 15.98
CIElCh	17, 24.590, 40.535
Yxy	2.3188, 0.4945, 0.3595
Android (android.graphics.Color)	4282850836 (0xFF471E14)
YUV	41.1190, -10.4117, 26.2056
Hunter-Lab	15.2271, 10.7365, 6.9939

Details

The HunterLab color **15.2271, 10.7365, 6.9939** is a dark color, and the websafe version is hex **663333**. A complement of this color would be **19.8516, -6.9162, -5.6926**, and the grayscale version is **14.9564, -0.7980, 0.8126**.

A 20% lighter version of the original color is **30.9692, 12.3985, 10.5750**, and **3.1868, 5.4575, 2.0592** is the 20% darker color. If you saturate the color by 10%, you get **14.2614, 12.6322, 7.4400**, and if you desaturate by 10%, it is **16.3201, 8.8420, 6.4220**.

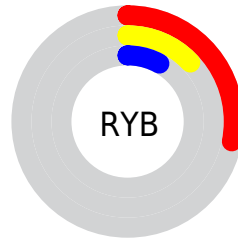
Distribution



Red (28%)

Green (12%)

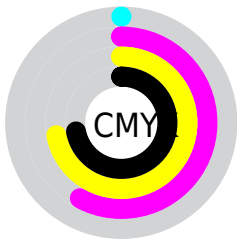
Blue (8%)



Red (28%)

Yellow (13%)

Blue (8%)

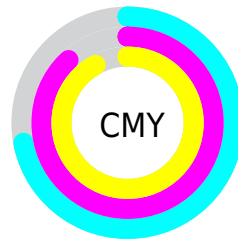


Cyan (0%)

Magenta (58%)

Yellow (72%)

Black (72%)



Cyan (72%)

Magenta (88%)

Yellow (92%)

Brightness & Saturation Gradients

These gradients show how the HunterLab color 15.2271, 10.7365, 6.9939 changes by changing the brightness by 10 percent. The first figure shows a shift by +10% for each color and the second figure -10%.

Similar to the brightness gradients but the following saturation gradients show a change of the HunterLab color 15.2271, 10.7365, 6.9939 by changing the saturation by 10% instead.

15.2271, 10.7365,
6.9939

15.2271, 10.7365,
6.9939

109.2913, 14.4571,
20.7194

8.8522, 9.8059,
6.1966

30.9520, 12.2954,
10.4314

0.0000, INF, NaN

0.0000, NaN, NaN

40.0990, 12.8733,
11.9998

0.0000, NaN, NaN

50.0030, 13.3427,
13.5129

0.0000, NaN, NaN

0.0000, NaN, NaN

60.6101, 13.7174,
14.9890

0.0000, NaN, NaN

71.8764, 14.0084,
16.4403

0.0000, NaN, NaN

83.7653, 14.2242,

0.0000, NaN, NaN

17.8753

■ 96.2459, 14.3719,
19.3001

■ 15.2271, 10.7365,
6.9939

■ 15.2271, 10.7365,
6.9939

■ 14.2614, 12.6322,
7.4400

■ 16.3201, 8.8420,
6.4220

■ 13.4321, 14.4508,
7.7945

■ 17.5247, 6.9942,
5.7496

■ 12.8516, 15.7683,
8.1952

■ 18.8277, 5.2164,
4.9998

■ 20.2170, 3.5199,
4.1910

■ 21.6820, 1.9072,
3.3372

■ 23.2138, 0.3756,
2.4489

■ 24.8046, -1.0805,
1.5338

■ 26.4482, -2.4678,
0.5972

■ 28.1391, -3.7935,
-0.3567

Harmonies

Analogous

The Analogous color harmony consists of three colors that are next to each other on the color wheel.



15.2275, 14.6825, 2.9753



15.2271, 10.7365, 6.9939



15.2275, 3.9018, 8.9550

Triad

The Triadic color harmony groups three colors that are evenly spaced from another and form a triangle on the color wheel.



15.2275, 10.7354, 6.9941



15.2275, -11.4780, 4.4865



15.2275, 1.7085, -17.7203

Complementary

The Complementary color scheme is a pair of colors which are on the opposite of each other on the color wheel.



15.2271, 10.7365, 6.9939



19.8516, -6.9162, -5.6926

Split Complementary

Split-complementary colors differ from the complementary color scheme. The scheme consists of three colors, the original color and two neighbors of the complement color.



15.2275, -5.0165, -16.6940



15.2271, 10.7365, 6.9939



15.2275, -11.8526, -1.6841

Square

The Square scheme is like the rectangle color scheme, but the four colors are evenly spaced on the color wheel.



15.2275, 10.7354, 6.9941



15.2275, -8.5633, 7.7311



15.2275, -9.6989, -9.9671



15.2275, 8.8841, -12.3477

Rectangle

The Rectangle color scheme consists of four colors that form a rectangle on the color wheel.



15.2271, 10.7365, 6.9939



15.2275, -0.9379, 9.3373



15.2275, -9.6989, -9.9671



15.2275, -0.6883, -18.1560

Sweetspot

The Sweet Spot groups the original color and five complimentary colors.



15.2275, 10.7354, 6.9941



27.9944, 2.6898, 4.4554



14.7779, 18.9340, -8.6456



14.0507, 1.4629, 2.3084



64.8100, -3.4581, 3.5212



16.4960, -0.8802, 0.8963

Same Dimension

The Same Dimension uses a secret algorithm to generate beautiful new colors.



15.2275, 10.7354, 6.9941



17.7207, 18.2319, 9.9813



20.2688, 0.4947, 10.5622



12.4619, -0.0541, 1.1325



17.7794, 23.4658, 11.3664



42.6174, 61.8896, 27.3441

Inverse Universe

The Inverse Universe completely reimagines the original color for something new.



19.8516, -6.9162, -5.6926



24.6297, -9.0893, -9.2462



13.6913, 2.9137, -17.3273



12.7936, -1.2566, 0.2372



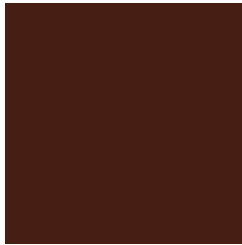
25.7659, -9.4928, -11.7128



62.5935, -22.0579, -30.6197

Previews

White Background



This preview shows how the HunterLab color 15.2271, 10.7365, 6.9939 looks on a white background.

Color Contrast Check

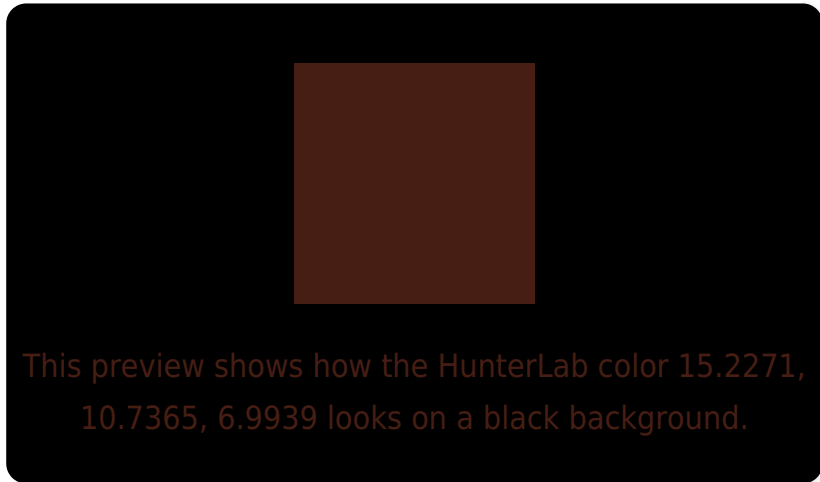
Large Text (above 18pt) WCAG AA ✓ Pass

Any Text WCAG AA ✓ Pass

Large Text (above 18pt) WCAG AAA ✓ Pass

Any Text WCAG AAA ✓ Pass

Black Background



Color Contrast Check

Large Text (above 18pt) WCAG AA × Fail

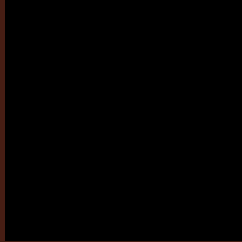
Any Text WCAG AA × Fail

Large Text (above 18pt) WCAG AAA × Fail

Any Text WCAG AAA × Fail

If you want to check with other color combinations, try the [Color Contrast Checker](#).

HunterLab 15.2271, 10.7365, 6.9939 Background



This preview shows how black text looks on a background with the HunterLab color 15.2271, 10.7365, 6.9939.

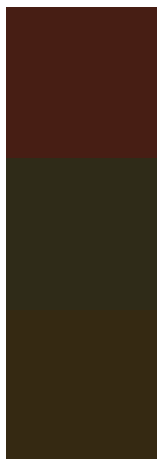


This preview shows how white text looks on a background with the HunterLab color 15.2271, 10.7365,

Color Blindness Simulation

Color vision deficiency is a very complex topic, and I could not describe the different causes any better than Wikipedia does, so if you want to learn more, you should check out their [article about color blindness](#).

Dichromacy



Original Color

15.2271, 10.7365, 6.9939

Protanopia

15.4856, -1.7288, 6.2033

Deuteranopia

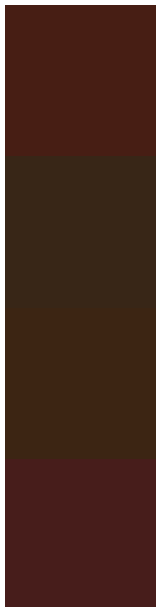
15.4481, 0.3545, 7.3289



Tritanopia

15.2225, 11.8832, 4.5391

Trichromacy



Original Color

15.2271, 10.7365, 6.9939

Protanomaly

15.1289, 2.7690, 6.1941

Deuteranomaly

15.2670, 4.1796, 7.0880

Tritanomaly

15.1574, 11.5800, 5.4866

Monochromacy



Original Color

15.2271, 10.7365, 6.9939

Achromatopsia

14.8909, -0.7945, 0.8091

Achromatomaly

14.7072, 2.8117, 3.3112

CSS Examples

Text

The CSS property to change the color of the text to HunterLab 15.2271, 10.7365, 6.9939 is called "color". The color property can be set on classes, ids or directly on the HTML element.

This example shows how text in the color `rgb(71, 30, 20)` looks like.

```
.text, #text, p{  
    color:rgb(71, 30, 20)  
}
```

If you want to add a text shadow in that color use the text-shadow property, you can generate a text shadow directly with our [CSS Text Shadow Generator](#).

Here you see how black text with a 4 pixel rgb(71, 30, 20) colored shadow looks like.

```
.shadow{ text-shadow: 4px 4px 2px rgb(71, 30, 20) }
```

Border

The CSS property to change the border of an element to HunterLab 15.2271, 10.7365, 6.9939 is called "border". The border property can be set on classes, ids or directly on the HTML element.

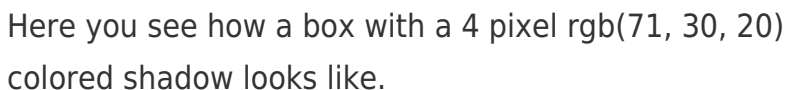
This example shows the color as border, it can be applied via the CSS property "border" or "border-color".

```
.border, #border, table{ border:4px solid rgb(71, 30, 20) }
```


If only the border color should be changed use the property `border-color`.

```
.border{ border-color:rgb(71, 30, 20) }
```

If you want to add a box shadow in that color use:



Here you see how a box with a 4 pixel `rgb(71, 30, 20)` colored shadow looks like.

```
.boxshadow{ -moz-box-shadow:4px 4px 4px  
4px rgb(71, 30, 20); -webkit-box-  
shadow:4px 4px 4px 4px rgb(71, 30, 20);  
box-shadow:4px 4px 4px 4px rgb(71, 30, 20)  
}
```

Background

The CSS property to change the background color of an element to HunterLab 15.2271, 10.7365, 6.9939 is called "background". The background property can be set on classes, ids or directly on the HTML element.

```
.background, #background, body{  
background: rgb(71, 30, 20) }
```

If only the background color should be changed can be used:

```
.background{ background-color: rgb(71, 30,  
20) }
```

This example shows the color as background, it is applied via the CSS property "background".

To optimize and compress your CSS code, you can use our [online CSS compressor and optimizer](#) based on csstidy. If you want to create a linear or radial gradient as background or border, check our [CSS Gradient Generator](#).

Hey! You found this booklet
interesting? Support Converting
Colors with the new Membership
Option!

The pro membership hides all ads, plus gives you
double the colors in the color bucket, and more
awesome pro features!

[Learn more, Memberships starting at \\$2.50/m!](#)

**Follow me
on Twitter!**

@ConvertingColor