

Converting Colors

HunterLab(15.2478, 12.8783,
7.2331)

Have a look what the booklet for
HunterLab(15.2478, 12.8783,
7.2331) contains.

HunterLab(15.1219, 12.8856, 7.1281)	3
<i>Conversions</i>	4
<i>Details</i>	6
<i>Harmonies</i>	12
<i>Previews</i>	24
<i>Color Blindness Simulation</i>	28
<i>CSS Examples</i>	31

Color

**HunterLab(15.1219, 12.8856,
7.1281)**

Conversions

Conversions Part 1

Format	Color
Hex	4A1B13
RGB	74, 27, 19
RGB Percent	29%, 11%, 7%
CMY	0.7098, 0.8941, 0.9255
CMYK	0.00, 0.64, 0.74, 0.71
HSL	9°, 59%, 18%
HSV	9°, 74%, 29%
XYZ	3.3335, 2.2867, 0.8818
YIQ	40.1410, 30.5800, 7.4760

Conversions

Conversions Part 2

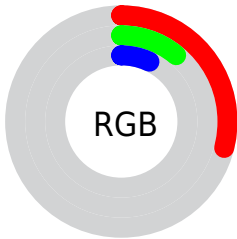
Format	Color
RYB	74, 28, 19
Decimal	4856595
CIELab	16.93, 21.74, 16.57
CIElCh	17, 27.338, 37.308
Yxy	2.2868, 0.5127, 0.3517
Android (android.graphics.Color)	4283046675 (0xFF4A1B13)
YUV	40.1410, -10.4225, 29.6943
Hunter-Lab	15.1219, 12.8856, 7.1281

Details

The HunterLab color **15.1219, 12.8856, 7.1281** is a dark color, and the websafe version is hex **663333**. A complement of this color would be **21.2813, -8.2829, -5.0808**, and the grayscale version is **14.6385, -0.7811, 0.7953**.

A 20% lighter version of the original color is **30.6713, 14.7883, 10.6241**, and **3.7208, 6.3721, 2.4043** is the 20% darker color. If you saturate the color by 10%, you get **14.1635, 14.9163, 7.5857**, and if you desaturate by 10%, it is **16.2423, 10.7869, 6.5437**.

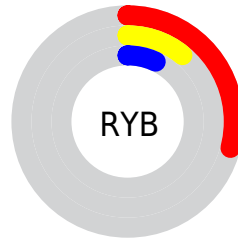
Distribution



Red (29%)

Green (11%)

Blue (7%)



Red (29%)

Yellow (11%)

Blue (7%)

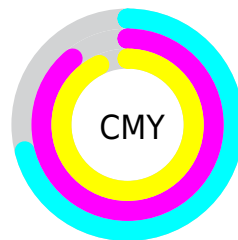


Cyan (0%)

Magenta (64%)

Yellow (74%)

Black (71%)



Cyan (71%)

Magenta (89%)

Yellow (93%)

Brightness & Saturation Gradients

These gradients show how the HunterLab color 15.1219, 12.8856, 7.1281 changes by changing the brightness by 10 percent. The first figure shows a shift by +10% for each color and the second figure -10%.

Similar to the brightness gradients but the following saturation gradients show a change of the HunterLab color 15.1219, 12.8856, 7.1281 by changing the saturation by 10% instead.

■ 15.1219, 12.8856,
7.1281

■ 15.1219, 12.8856,
7.1281

■ 109.0882, 17.9078,
21.1976

■ 8.7563, 11.8400,
6.1294

■ 30.8187, 14.7760,
10.6667

0.0000, INF, NaN

0.0000, NaN, NaN

■ 39.9537, 15.5110,
12.2795

0.0000, NaN, NaN

■ 49.8466, 16.1305,
13.8325

0.0000, NaN, NaN

0.0000, NaN, NaN

■ 60.4433, 16.6487,
15.3449

0.0000, NaN, NaN

■ 71.6998, 17.0772,
16.8298

0.0000, NaN, NaN

■ 83.5795, 17.4251,

0.0000, NaN, NaN

18.2962

■ 96.0513, 17.6999,
19.7505

■ 15.1219, 12.8856,
7.1281

■ 15.1219, 12.8856,
7.1281

■ 14.1635, 14.9163,
7.5857

■ 16.2423, 10.7869,
6.5437

■ 13.3745, 16.7521,
7.9999

■ 17.5049, 8.6957,
5.8639

■ 12.9995, 17.6351,
8.3190

■ 18.8923, 6.6562,
5.1166

■ 20.3880, 4.6931,
4.3232

■ 21.9779, 2.8161,
3.4988

■ 23.6499, 1.0259,
2.6540

■ 25.3939, -0.6817,
1.7958

■ 27.2016, -2.3138,
0.9287

■ 29.0659, -3.8780,
0.0553

Harmonies

Analogous

The Analogous color harmony consists of three colors that are next to each other on the color wheel.



15.1223, 16.8872, 2.5095



15.1219, 12.8856, 7.1281



15.1223, 5.3477, 9.5001

Triad

The Triadic color harmony groups three colors that are evenly spaced from another and form a triangle on the color wheel.



15.1223, 12.8844, 7.1283



15.1223, -12.1996, 5.3160



15.1223, 1.1248, -20.9127

Complementary

The Complementary color scheme is a pair of colors which are on the opposite of each other on the color wheel.



15.1219, 12.8856, 7.1281



21.2813, -8.2829, -5.0808

Split Complementary

Split-complementary colors differ from the complementary color scheme. The scheme consists of three colors, the original color and two neighbors of the complement color.



15.1223, -6.1130, -18.8267



15.1219, 12.8856, 7.1281



15.1223, -12.8830, -1.0830

Square

The Square scheme is like the rectangle color scheme, but the four colors are evenly spaced on the color wheel.



15.1223, 12.8844, 7.1283



15.1223, -8.7857, 8.5469



15.1223, -10.8861, -10.4631



15.1223, 9.2686, -15.2409

Rectangle

The Rectangle color scheme consists of four colors that form a rectangle on the color wheel.



15.1219, 12.8856, 7.1281



15.1223, -0.1049, 10.0719



15.1223, -10.8861, -10.4631



15.1223, -1.4979, -21.1293

Sweetspot

The Sweet Spot groups the original color and five complimentary colors.



15.1223, 12.8844, 7.1283



29.3230, 3.3638, 4.4560



15.2409, 20.8793, -10.6973



14.6016, 1.8250, 2.2999



65.8695, -3.5146, 3.5788



17.3419, -0.9253, 0.9422

Same Dimension

The Same Dimension uses a secret algorithm to generate beautiful new colors.



15.1223, 12.8844, 7.1283



17.8335, 21.7212, 10.3507



20.3118, 1.8296, 10.7497



13.1749, 0.0302, 1.1628



17.7819, 25.5787, 11.4049



42.2493, 65.6031, 27.1823

Inverse Universe

The Inverse Universe completely reimagines the original color for something new.



21.2813, -8.2829, -5.0808



27.0655, -11.1955, -8.2391



14.4736, 2.2421, -17.5808



13.6221, -1.4177, 0.2954



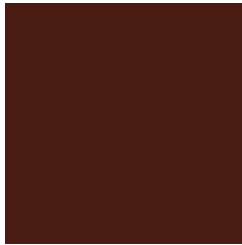
27.9310, -11.6894, -9.6773



67.2407, -27.4750, -24.7344

Previews

White Background



This preview shows how the HunterLab color 15.1219, 12.8856, 7.1281 looks on a white background.

Color Contrast Check

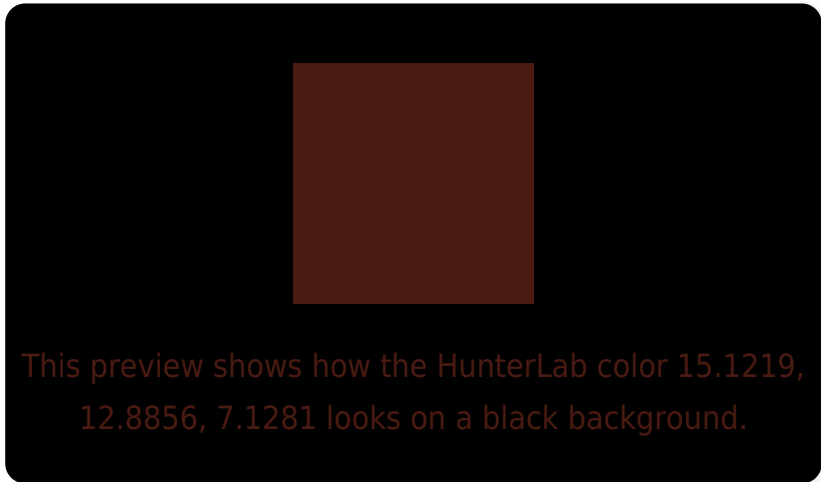
Large Text (above 18pt) WCAG AA ✓ Pass

Any Text WCAG AA ✓ Pass

Large Text (above 18pt) WCAG AAA ✓ Pass

Any Text WCAG AAA ✓ Pass

Black Background



Color Contrast Check

Large Text (above 18pt) WCAG AA × Fail

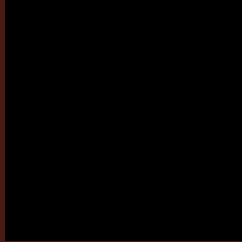
Any Text WCAG AA × Fail

Large Text (above 18pt) WCAG AAA × Fail

Any Text WCAG AAA × Fail

If you want to check with other color combinations, try the [Color Contrast Checker](#).

HunterLab 15.1219, 12.8856, 7.1281 Background



This preview shows how black text looks on a background with the HunterLab color 15.1219, 12.8856, 7.1281.

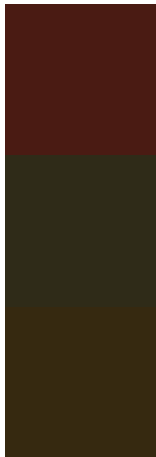


This preview shows how white text looks on a background with the HunterLab color 15.1219, 12.8856, 7.1281.

Color Blindness Simulation

Color vision deficiency is a very complex topic, and I could not describe the different causes any better than Wikipedia does, so if you want to learn more, you should check out their [article about color blindness](#).

Dichromacy



Original Color

15.1219, 12.8856, 7.1281

Protanopia

15.4856, -1.7288, 6.2033

Deuteranopia

15.5163, 0.5457, 7.6975



Tritanopia

15.0790, 13.7563, 5.4554

Trichromacy



Original Color

15.1219, 12.8856, 7.1281

Protanomaly

15.0031, 3.4139, 6.3049

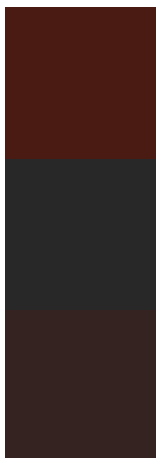
Deuteranomaly

15.1470, 4.7985, 7.3417

Tritanomaly

15.0352, 13.5585, 6.0943

Monochromacy



Original Color

15.1219, 12.8856, 7.1281

Achromatopsia

14.5667, -0.7772, 0.7914

Achromatomaly

14.2703, 3.5203, 3.1774

CSS Examples

Text

The CSS property to change the color of the text to HunterLab 15.1219, 12.8856, 7.1281 is called "color". The color property can be set on classes, ids or directly on the HTML element.

This example shows how text in the color `rgb(74, 27, 19)` looks like.

```
.text, #text, p{  
    color:rgb(74, 27, 19)  
}
```

If you want to add a text shadow in that color use the text-shadow property, you can generate a text shadow directly with our [CSS Text Shadow Generator](#).

Here you see how black text with a 4 pixel rgb(74, 27, 19) colored shadow looks like.

```
.shadow{ text-shadow: 4px 4px 2px rgb(74, 27, 19) }
```

Border

The CSS property to change the border of an element to HunterLab 15.1219, 12.8856, 7.1281 is called "border". The border property can be set on classes, ids or directly on the HTML element.

This example shows the color as border, it can be applied via the CSS property "border" or "border-color".

```
.border, #border, table{ border:4px solid rgb(74, 27, 19) }
```


If only the border color should be changed use the property `border-color`.

```
.border{ border-color:rgb(74, 27, 19) }
```

If you want to add a box shadow in that color use:

Here you see how a box with a 4 pixel `rgb(74, 27, 19)` colored shadow looks like.

```
.boxshadow{ -moz-box-shadow:4px 4px 4px  
4px rgb(74, 27, 19); -webkit-box-  
shadow:4px 4px 4px 4px rgb(74, 27, 19);  
box-shadow:4px 4px 4px 4px rgb(74, 27, 19)  
}
```

Background

The CSS property to change the background color of an element to HunterLab 15.1219, 12.8856, 7.1281 is called "background". The background property can be set on classes, ids or directly on the HTML element.

```
.background, #background, body{  
background: rgb(74, 27, 19) }
```

If only the background color should be changed can be used:

```
.background{ background-color: rgb(74, 27,  
19) }
```

This example shows the color as background, it is applied via the CSS property "background".

To optimize and compress your CSS code, you can use our [online CSS compressor and optimizer](#) based on csstidy. If you want to create a linear or radial gradient as background or border, check our [CSS Gradient Generator](#).

Hey! You found this booklet interesting? Support Converting Colors with the new Membership Option!

The pro membership hides all ads, plus gives you double the colors in the color bucket, and more awesome pro features!

[Learn more, Memberships starting at \\$2.50/m!](#)

**Follow me
on Twitter!**

@ConvertingColor