

Converting Colors

HunterLab(15.2575, 7.3225,
3.0107)

Have a look what the booklet for
HunterLab(15.2575, 7.3225, 3.0107)
contains.

HunterLab(15.1511, 7.3812, 2.9338)	3
<i>Conversions</i>	4
<i>Details</i>	6
<i>Harmonies</i>	12
<i>Previews</i>	24
<i>Color Blindness Simulation</i>	28
<i>CSS Examples</i>	31

Color

**HunterLab(15.1511, 7.3812,
2.9338)**

Conversions

Conversions Part 1

Format	Color
Hex	3E2224
RGB	62, 34, 36
RGB Percent	24%, 13%, 14%
CMY	0.7569, 0.8667, 0.8588
CMYK	0.00, 0.45, 0.42, 0.76
HSL	356°, 29%, 19%
HSV	356°, 45%, 24%
XYZ	2.8771, 2.2956, 1.9605
YIQ	42.6000, 16.0460, 6.5580

Conversions

Conversions Part 2

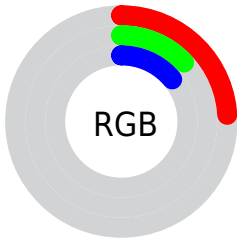
Format	Color
RYB	62, 34, 36
Decimal	4071972
CIELab	16.97, 13.72, 4.42
CIElCh	17, 14.418, 17.856
Yxy	2.2957, 0.4033, 0.3218
Android (android.graphics.Color)	4282262052 (0xFF3E2224)
YUV	42.6000, -3.2538, 17.0138
Hunter-Lab	15.1511, 7.3812, 2.9338

Details

The HunterLab color **15.1511, 7.3812, 2.9338** is a dark color, and the websafe version is hex **333333**. A complement of this color would be **20.2771, -7.3327, -0.1343**, and the grayscale version is **15.4189, -0.8227, 0.8377**.

A 20% lighter version of the original color is **30.9041, 8.2948, 4.6278**, and **1.1360, 1.9455, 0.7341** is the 20% darker color. If you saturate the color by 10%, you get **13.9293, 9.3857, 3.4498**, and if you desaturate by 10%, it is **16.4948, 5.3930, 2.4663**.

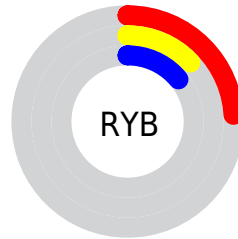
Distribution



Red (24%)

Green (13%)

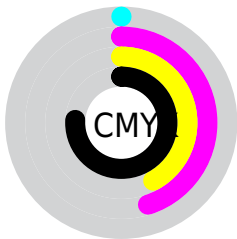
Blue (14%)



Red (24%)

Yellow (13%)

Blue (14%)

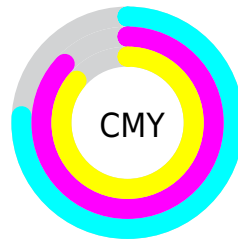


Cyan (0%)

Magenta (45%)

Yellow (42%)

Black (76%)



Cyan (76%)

Magenta (87%)

Yellow (86%)

Brightness & Saturation Gradients

These gradients show how the HunterLab color 15.1511, 7.3812, 2.9338 changes by changing the brightness by 10 percent. The first figure shows a shift by +10% for each color and the second figure -10%.

Similar to the brightness gradients but the following saturation gradients show a change of the HunterLab color 15.1511, 7.3812, 2.9338 by changing the saturation by 10% instead.

■ 15.1511, 7.3812,
2.9338

■ 15.1511, 7.3812,
2.9338

109.1445, 8.9291,
10.2574

■ 8.7830, 6.7642,
2.5645

■ 30.8557, 8.3705,
4.4346

0.0000, INF, NaN

0.0000, NaN, NaN

■ 39.9940, 8.6854,
5.2044

0.0000, NaN, NaN

■ 49.8899, 8.9053,
5.9931

0.0000, NaN, NaN

■ 60.4895, 9.0427,
6.8024

0.0000, NaN, NaN

0.0000, NaN, NaN

■ 71.7487, 9.1071,
7.6332

0.0000, NaN, NaN

■ 83.6310, 9.1058,

0.0000, NaN, NaN

8.4860

96.1052, 9.0449,
9.3608

15.1511, 7.3812,
2.9338

15.1511, 7.3812,
2.9338

13.9293, 9.3857,
3.4498

16.4948, 5.3930,
2.4663

12.8485, 11.3567,
4.0051

17.9418, 3.4518,
2.0479

11.9304, 13.2107,
4.5811

19.4775, 1.5686,
1.6763

11.1932, 14.8410,
5.1454

21.0898, -0.2539,
1.3472

10.5124, 16.5600,
5.5994

22.7687, -2.0186,
1.0557

■ 10.1677, 17.5079,
5.8308

■ 24.5060, -3.7309,
0.7970

■ 26.2951, -5.3968,
0.5667

■ 28.1305, -7.0225,
0.3609

■ 30.0077, -8.6140,
0.1762

Harmonies

Analogous

The Analogous color harmony consists of three colors that are next to each other on the color wheel.



15.1515, 7.6237, -0.8260



15.1511, 7.3812, 2.9338



15.1515, 4.8063, 5.3706

Triad

The Triadic color harmony groups three colors that are evenly spaced from another and form a triangle on the color wheel.



15.1515, 7.3804, 2.9341



15.1515, -6.1852, 5.0172



15.1515, -2.4203, -8.4052

Complementary

The Complementary color scheme is a pair of colors which are on the opposite of each other on the color wheel.



15.1511, 7.3812, 2.9338



20.2771, -7.3327, -0.1343

Split Complementary

Split-complementary colors differ from the complementary color scheme. The scheme consists of three colors, the original color and two neighbors of the complement color.



15.1515, -5.7100, -5.7969



15.1511, 7.3812, 2.9338



15.1515, -7.7248, 2.3084

Square

The Square scheme is like the rectangle color scheme, but the four colors are evenly spaced on the color wheel.



15.1515, 7.3804, 2.9341



15.1515, -3.1345, 6.3364



15.1515, -7.5605, -1.6396



15.1515, 1.6653, -8.1077

Rectangle

The Rectangle color scheme consists of four colors that form a rectangle on the color wheel.



15.1511, 7.3812, 2.9338



15.1515, 2.2542, 6.2259



15.1515, -7.5605, -1.6396



15.1515, -3.6471, -7.8158

Sweetspot

The Sweet Spot groups the original color and five complimentary colors.



15.1515, 7.3804, 2.9341



25.7549, 1.9416, 2.1841



15.6278, 10.1724, -7.4825



13.1194, 1.1040, 1.1407



62.6995, -3.3455, 3.4066



14.8260, -0.7911, 0.8055

Same Dimension

The Same Dimension uses a secret algorithm to generate beautiful new colors.



15.1515, 7.3804, 2.9341



18.1399, 12.7135, 4.6386



17.5150, 2.3625, 5.7107



10.8475, 0.1751, 0.7650



15.5338, 26.6971, 9.3011



39.4244, 67.6091, 24.7492

Inverse Universe

The Inverse Universe completely reimagines the original color for something new.



15.1515, 7.3804, 2.9341



18.1399, 12.7135, 4.6386



17.3141, -2.6271, -4.9834



10.8475, 0.1751, 0.7650



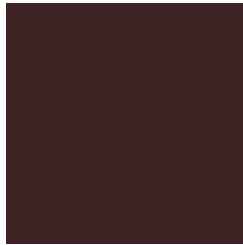
15.5338, 26.6971, 9.3011



39.4244, 67.6091, 24.7492

Previews

White Background



This preview shows how the HunterLab color 15.1511, 7.3812, 2.9338 looks on a white background.

Color Contrast Check

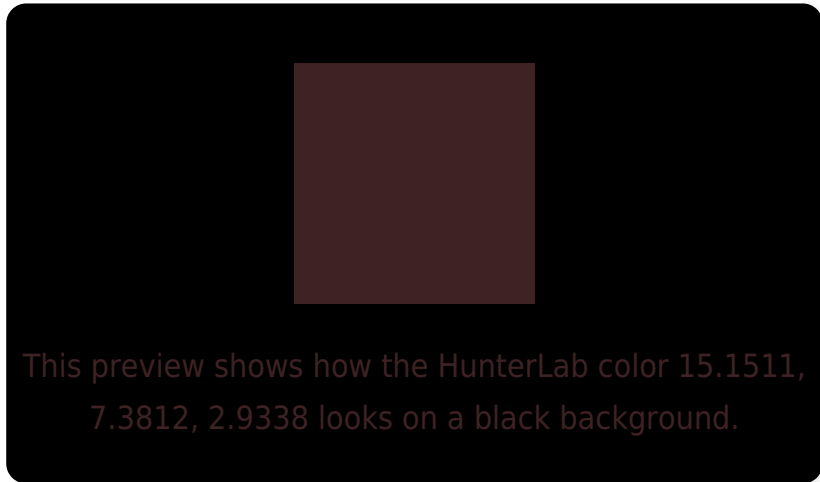
Large Text (above 18pt) WCAG AA ✓ Pass

Any Text WCAG AA ✓ Pass

Large Text (above 18pt) WCAG AAA ✓ Pass

Any Text WCAG AAA ✓ Pass

Black Background



Color Contrast Check

Large Text (above 18pt) WCAG AA × Fail

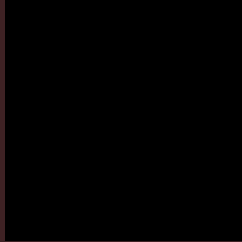
Any Text WCAG AA × Fail

Large Text (above 18pt) WCAG AAA × Fail

Any Text WCAG AAA × Fail

If you want to check with other color combinations, try the [Color Contrast Checker](#).

HunterLab 15.1511, 7.3812, 2.9338 Background



This preview shows how black text looks on a background with the HunterLab color 15.1511, 7.3812, 2.9338.



This preview shows how white text looks on a background with the HunterLab color 15.1511, 7.3812,

Color Blindness Simulation

Color vision deficiency is a very complex topic, and I could not describe the different causes any better than Wikipedia does, so if you want to learn more, you should check out their [article about color blindness](#).

Dichromacy



Original Color

15.1511, 7.3812, 2.9338

Protanopia

15.3121, -0.5707, 1.6521

Deuteranopia

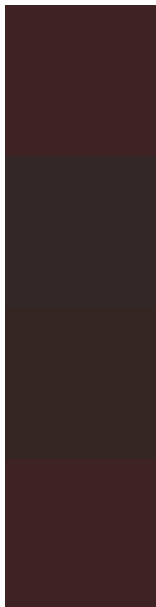
15.3629, 0.5695, 3.3398



Tritanopia

15.1511, 7.3812, 2.9338

Trichromacy



Original Color

15.1511, 7.3812, 2.9338

Protanomaly

15.1701, 2.3623, 1.8872

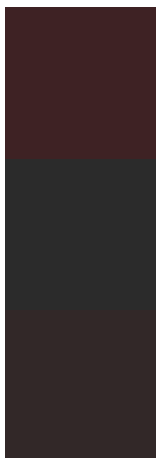
Deuteranomaly

15.1388, 3.1941, 3.1569

Tritanomaly

15.1511, 7.3812, 2.9338

Monochromacy



Original Color

15.1511, 7.3812, 2.9338

Achromatopsia

15.5427, -0.8293, 0.8445

Achromatomaly

15.3261, 1.7977, 1.7093

CSS Examples

Text

The CSS property to change the color of the text to HunterLab 15.1511, 7.3812, 2.9338 is called "color". The color property can be set on classes, ids or directly on the HTML element.

This example shows how text in the color `rgb(62, 34, 36)` looks like.

```
.text, #text, p{  
    color:rgb(62, 34, 36)  
}
```

If you want to add a text shadow in that color use the text-shadow property, you can generate a text shadow directly with our [CSS Text Shadow Generator](#).

Here you see how black text with a 4 pixel rgb(62, 34, 36) colored shadow looks like.

```
.shadow{ text-shadow: 4px 4px 2px rgb(62, 34, 36) }
```

Border

The CSS property to change the border of an element to HunterLab 15.1511, 7.3812, 2.9338 is called "border". The border property can be set on classes, ids or directly on the HTML element.

This example shows the color as border, it can be applied via the CSS property "border" or "border-color".

```
.border, #border, table{ border:4px solid rgb(62, 34, 36) }
```


If only the border color should be changed use the property `border-color`.

```
.border{ border-color:rgb(62, 34, 36) }
```

If you want to add a box shadow in that color use:

Here you see how a box with a 4 pixel `rgb(62, 34, 36)` colored shadow looks like.

```
.boxshadow{ -moz-box-shadow:4px 4px 4px  
4px rgb(62, 34, 36); -webkit-box-  
shadow:4px 4px 4px 4px rgb(62, 34, 36);  
box-shadow:4px 4px 4px 4px rgb(62, 34, 36)  
}
```

Background

The CSS property to change the background color of an element to HunterLab 15.1511, 7.3812, 2.9338 is called "background". The background property can be set on classes, ids or directly on the HTML element.

```
.background, #background, body{  
background: rgb(62, 34, 36) }
```

If only the background color should be changed can be used:

```
.background{ background-color: rgb(62, 34,  
36) }
```

This example shows the color as background, it is applied via the CSS property "background".

To optimize and compress your CSS code, you can use our [online CSS compressor and optimizer](#) based on csstidy. If you want to create a linear or radial gradient as background or border, check our [CSS Gradient Generator](#).

Hey! You found this booklet interesting? Support Converting Colors with the new Membership Option!

The pro membership hides all ads, plus gives you double the colors in the color bucket, and more awesome pro features!

[Learn more, Memberships starting at \\$2.50/m!](#)

**Follow me
on Twitter!**

@ConvertingColor