

Converting Colors

HunterLab(15.3047, 9.6100,
3.7338)

Have a look what the booklet for
HunterLab(15.3047, 9.6100, 3.7338)
contains.

HunterLab(15.3030, 9.6126, 3.7345)	3
<i>Conversions</i>	4
<i>Details</i>	6
<i>Harmonies</i>	12
<i>Previews</i>	24
<i>Color Blindness Simulation</i>	28
<i>CSS Examples</i>	31

Color

**HunterLab(15.3030, 9.6126,
3.7345)**

Conversions

Conversions Part 1

Format	Color
Hex	432022
RGB	67, 32, 34
RGB Percent	26%, 13%, 13%
CMY	0.7373, 0.8745, 0.8667
CMYK	0.00, 0.52, 0.49, 0.74
HSL	357°, 35%, 19%
HSV	357°, 52%, 26%
XYZ	3.1200, 2.3418, 1.8009
YIQ	42.6930, 20.2180, 8.0420

Conversions

Conversions Part 2

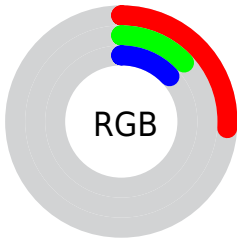
Format	Color
RYB	67, 32, 34
Decimal	4399138
CIELab	17.19, 17.04, 6.26
CIELCh	17, 18.157, 20.177
Yxy	2.3419, 0.4296, 0.3224
Android (android.graphics.Color)	4282589218 (0xFF432022)
YUV	42.6930, -4.2856, 21.3172
Hunter-Lab	15.3030, 9.6126, 3.7345

Details

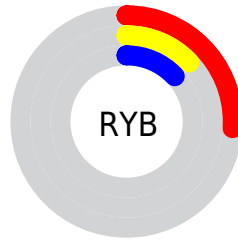
The HunterLab color **15.3030, 9.6126, 3.7345** is a dark color, and the websafe version is hex **663333**. A complement of this color would be **21.6867, -8.6737, -0.4620**, and the grayscale version is **15.4517, -0.8245, 0.8395**.

A 20% lighter version of the original color is **31.0479, 11.0064, 5.5602**, and **2.9252, 5.0094, 1.8902** is the 20% darker color. If you saturate the color by 10%, you get **14.0850, 11.7823, 4.3442**, and if you desaturate by 10%, it is **16.6740, 7.4214, 3.1649**.

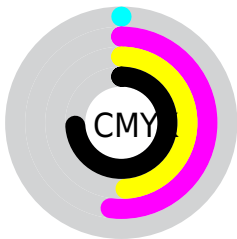
Distribution



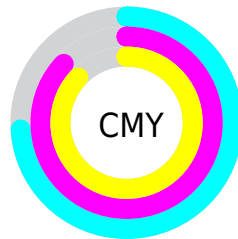
- Red (26%)
- Green (13%)
- Blue (13%)



- Red (26%)
- Yellow (13%)
- Blue (13%)



- Cyan (0%)
- Magenta (52%)
- Yellow (49%)
- Black (74%)



- Cyan (74%)
- Magenta (87%)
- Yellow (87%)

Brightness & Saturation Gradients

These gradients show how the HunterLab color 15.3030, 9.6126, 3.7345 changes by changing the brightness by 10 percent. The first figure shows a shift by +10% for each color and the second figure -10%.

Similar to the brightness gradients but the following saturation gradients show a change of the HunterLab color 15.3030, 9.6126, 3.7345 by changing the saturation by 10% instead.

■ 15.3030, 9.6126,
3.7345

■ 15.3030, 9.6126,
3.7345

■ 109.4376, 12.6130,
12.0242

■ 8.9206, 8.7523,
3.3957

■ 31.0481, 10.9841,
5.5225

0.0000, INF, NaN

0.0000, NaN, NaN

■ 40.2037, 11.4749,
6.4120

0.0000, NaN, NaN

■ 50.1157, 11.8615,
7.3100

0.0000, NaN, NaN

0.0000, NaN, NaN

■ 60.7303, 12.1573,
8.2204

0.0000, NaN, NaN

■ 72.0036, 12.3729,
9.1459

0.0000, NaN, NaN

■ 83.8992, 12.5165,

0.0000, NaN, NaN

10.0877

96.3861, 12.5947,
11.0470

15.3030, 9.6126,
3.7345

15.3030, 9.6126,
3.7345

14.0850, 11.7823,
4.3442

16.6740, 7.4214,
3.1649

13.0430, 13.8480,
4.9731

18.1748, 5.2629,
2.6435

12.2004, 15.6883,
5.5875

19.7864, 3.1626,
2.1720

11.5124, 17.3605,
6.1067

21.4931, 1.1301,
1.7480

10.9621, 18.8494,
6.4907

23.2816, -0.8340,
1.3670

■ 25.1414, -2.7342,
1.0240

■ 27.0637, -4.5772,
0.7141

■ 29.0416, -6.3701,
0.4328

■ 31.0692, -8.1200,
0.1762

Harmonies

Analogous

The Analogous color harmony consists of three colors that are next to each other on the color wheel.



15.3034, 10.1931, -0.8599



15.3030, 9.6126, 3.7345



15.3034, 6.0426, 6.4387

Triad

The Triadic color harmony groups three colors that are evenly spaced from another and form a triangle on the color wheel.



15.3034, 9.6117, 3.7348



15.3034, -7.6942, 5.7148



15.3034, -2.4678, -11.6330

Complementary

The Complementary color scheme is a pair of colors which are on the opposite of each other on the color wheel.



15.3030, 9.6126, 3.7345



21.6867, -8.6737, -0.4620

Split Complementary

Split-complementary colors differ from the complementary color scheme. The scheme consists of three colors, the original color and two neighbors of the complement color.



15.3034, -6.6480, -8.2933



15.3030, 9.6126, 3.7345



15.3034, -9.3913, 2.3522

Square

The Square scheme is like the rectangle color scheme, but the four colors are evenly spaced on the color wheel.



15.3034, 9.6117, 3.7348



15.3034, -4.0803, 7.3016



15.3034, -9.0354, -2.7788



15.3034, 2.7441, -10.8846

Rectangle

The Rectangle color scheme consists of four colors that form a rectangle on the color wheel.



15.3030, 9.6126, 3.7345



15.3034, 2.6816, 7.3120



15.3034, -9.0354, -2.7788



15.3034, -4.0277, -10.9182

Sweetspot

The Sweet Spot groups the original color and five complimentary colors.



15.3034, 9.6117, 3.7348



26.9140, 2.6226, 2.5057



15.9715, 13.2641, -9.6390



13.6191, 1.4295, 1.2951



63.7533, -3.4017, 3.4638



15.6573, -0.8354, 0.8507

Same Dimension

The Same Dimension uses a secret algorithm to generate beautiful new colors.



15.3034, 9.6117, 3.7348



17.8091, 16.2175, 5.9127



18.2868, 3.1257, 6.8920



11.5754, 0.2028, 0.8365



15.9625, 27.4122, 9.7259



39.9248, 68.4439, 25.2436

Inverse Universe

The Inverse Universe completely reimagines the original color for something new.



15.3034, 9.6117, 3.7348



17.8091, 16.2175, 5.9127



17.7583, -2.6363, -6.8328



11.5754, 0.2028, 0.8365



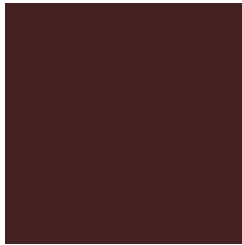
15.9625, 27.4122, 9.7259



39.9248, 68.4439, 25.2436

Previews

White Background



This preview shows how the HunterLab color 15.3030, 9.6126, 3.7345 looks on a white background.

Color Contrast Check

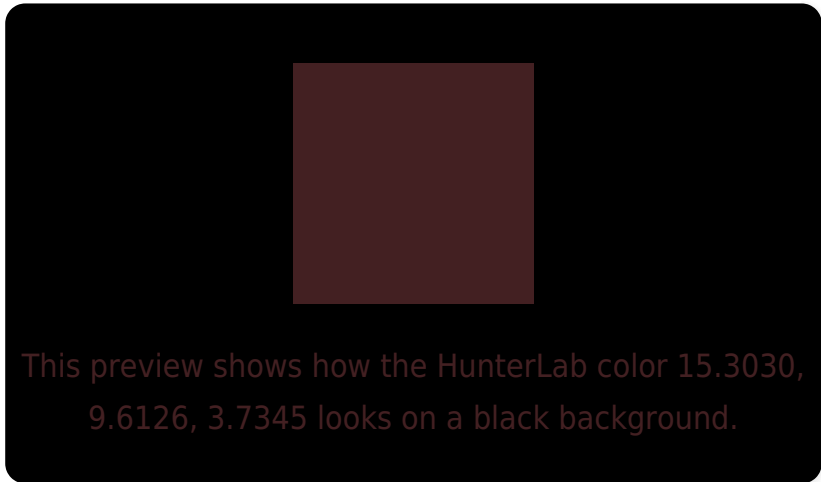
Large Text (above 18pt) WCAG AA ✓ Pass

Any Text WCAG AA ✓ Pass

Large Text (above 18pt) WCAG AAA ✓ Pass

Any Text WCAG AAA ✓ Pass

Black Background



Color Contrast Check

Large Text (above 18pt) WCAG AA × Fail

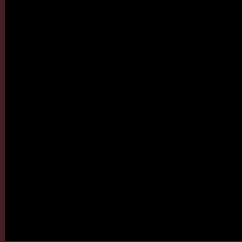
Any Text WCAG AA × Fail

Large Text (above 18pt) WCAG AAA × Fail

Any Text WCAG AAA × Fail

If you want to check with other color combinations, try the [Color Contrast Checker](#).

HunterLab 15.3030, 9.6126, 3.7345 Background



This preview shows how black text looks on a background with the HunterLab color 15.3030, 9.6126, 3.7345.

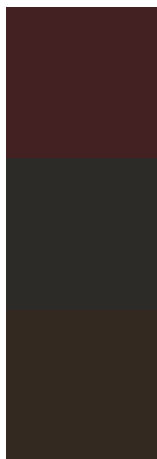


This preview shows how white text looks on a background with the HunterLab color 15.3030, 9.6126,

Color Blindness Simulation

Color vision deficiency is a very complex topic, and I could not describe the different causes any better than Wikipedia does, so if you want to learn more, you should check out their [article about color blindness](#).

Dichromacy



Original Color

15.3030, 9.6126, 3.7345

Protanopia

15.5953, -0.8260, 2.2979

Deuteranopia

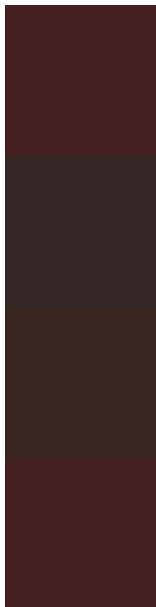
15.4725, 0.8291, 4.3122



Tritanopia

15.3030, 9.6126, 3.7345

Trichromacy



Original Color

15.3030, 9.6126, 3.7345

Protanomaly

15.3019, 2.7071, 2.6947

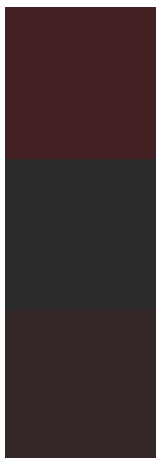
Deuteranomaly

15.3814, 3.8931, 3.9999

Tritanomaly

15.3030, 9.6126, 3.7345

Monochromacy



Original Color

15.3030, 9.6126, 3.7345

Achromatopsia

15.5427, -0.8293, 0.8445

Achromatomaly

15.2784, 2.7591, 1.6725

CSS Examples

Text

The CSS property to change the color of the text to HunterLab 15.3030, 9.6126, 3.7345 is called "color". The color property can be set on classes, ids or directly on the HTML element.

This example shows how text in the color `rgb(67, 32, 34)` looks like.

```
.text, #text, p{  
    color:rgb(67, 32, 34)  
}
```

If you want to add a text shadow in that color use the text-shadow property, you can generate a text shadow directly with our [CSS Text Shadow Generator](#).

Here you see how black text with a 4 pixel rgb(67, 32, 34) colored shadow looks like.

```
.shadow{ text-shadow: 4px 4px 2px rgb(67, 32, 34) }
```

Border

The CSS property to change the border of an element to HunterLab 15.3030, 9.6126, 3.7345 is called "border".

The border property can be set on classes, ids or directly on the HTML element.

This example shows the color as border, it can be applied via the CSS property "border" or "border-color".

```
.border, #border, table{ border:4px solid rgb(67, 32, 34) }
```


If only the border color should be changed use the property `border-color`.

```
.border{ border-color:rgb(67, 32, 34) }
```

If you want to add a box shadow in that color use:

Here you see how a box with a 4 pixel `rgb(67, 32, 34)` colored shadow looks like.

```
.boxshadow{ -moz-box-shadow:4px 4px 4px  
4px rgb(67, 32, 34); -webkit-box-  
shadow:4px 4px 4px 4px rgb(67, 32, 34);  
box-shadow:4px 4px 4px 4px rgb(67, 32, 34)  
}
```

Background

The CSS property to change the background color of an element to HunterLab 15.3030, 9.6126, 3.7345 is called "background". The background property can be set on classes, ids or directly on the HTML element.

```
.background, #background, body{  
background: rgb(67, 32, 34) }
```

If only the background color should be changed can be used:

```
.background{ background-color: rgb(67, 32,  
34) }
```

This example shows the color as background, it is applied via the CSS property "background".

To optimize and compress your CSS code, you can use our [online CSS compressor and optimizer](#) based on csstidy. If you want to create a linear or radial gradient as background or border, check our [CSS Gradient Generator](#).

Hey! You found this booklet
interesting? Support Converting
Colors with the new Membership
Option!

The pro membership hides all ads, plus gives you
double the colors in the color bucket, and more
awesome pro features!

[Learn more, Memberships starting at \\$2.50/m!](#)

**Follow me
on Twitter!**

@ConvertingColor