

Converting Colors

HunterLab(15.3416, 7.7731,
-0.9521)

Have a look what the booklet for
HunterLab(15.3416, 7.7731, -0.9521)
contains.

HunterLab(15.3882, 7.6103, -0.7465)	3
<i>Conversions</i>	4
<i>Details</i>	6
<i>Harmonies</i>	12
<i>Previews</i>	24
<i>Color Blindness Simulation</i>	28
<i>CSS Examples</i>	31

Color

**HunterLab(15.3882, 7.6103,
-0.7465)**

Conversions

Conversions Part 1

Format	Color
Hex	3C232F
RGB	60, 35, 47
RGB Percent	24%, 14%, 18%
CMY	0.7647, 0.8627, 0.8157
CMYK	0.00, 0.42, 0.22, 0.76
HSL	331°, 26%, 19%
HSV	331°, 42%, 24%
XYZ	2.9776, 2.3680, 2.9895
YIQ	43.8430, 11.0480, 9.0320

Conversions

Conversions Part 2

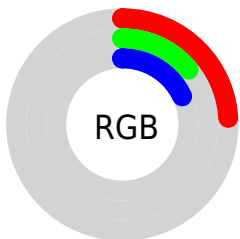
Format	Color
RYB	60, 35, 47
Decimal	3941167
CIELab	17.31, 14.04, -2.90
CIElCh	17, 14.336, 348.317
Yxy	2.3681, 0.3572, 0.2841
Android (android.graphics.Color)	4282131247 (0xFF3C232F)
YUV	43.8430, 1.5564, 14.1697
Hunter-Lab	15.3882, 7.6103, -0.7465

Details

The HunterLab color **15.3882, 7.6103, -0.7465** is a dark color, and the websafe version is hex **333333**. A complement of this color would be **19.5000, -8.1043, 3.3712**, and the grayscale version is **15.8117, -0.8437, 0.8591**.

A 20% lighter version of the original color is **31.1701, 8.6101, -0.3408**, and **1.9677, 3.3697, 1.2715** is the 20% darker color. If you saturate the color by 10%, you get **14.2142, 9.7255, -0.9612**, and if you desaturate by 10%, it is **16.6673, 5.4757, -0.4168**.

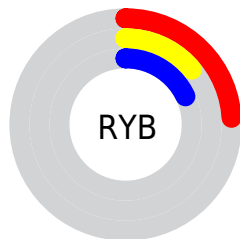
Distribution



Red (24%)

Green (14%)

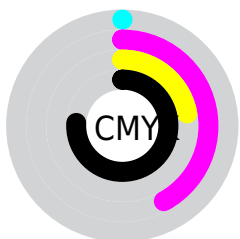
Blue (18%)



Red (24%)

Yellow (14%)

Blue (18%)

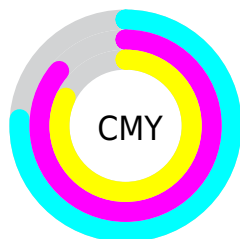


Cyan (0%)

Magenta (42%)

Yellow (22%)

Black (76%)



Cyan (76%)

Magenta (86%)

Yellow (82%)

Brightness & Saturation Gradients

These gradients show how the HunterLab color 15.3882, 7.6103, -0.7465 changes by changing the brightness by 10 percent. The first figure shows a shift by +10% for each color and the second figure -10%.

Similar to the brightness gradients but the following saturation gradients show a change of the HunterLab color 15.3882, 7.6103, -0.7465 by changing the saturation by 10% instead.

■ 15.3882, 7.6103,
-0.7465

■ 15.3882, 7.6103,
-0.7465

■ 109.6015, 9.2734,
3.0279

■ 8.9966, 6.9134,
-0.8810

■ 31.1559, 8.6283,
-0.2706

0.0000, INF, NaN

0.0000, NaN, NaN

■ 40.3212, 8.9569,
0.0623

0.0000, NaN, NaN

■ 50.2422, 9.1900,
0.4484

0.0000, NaN, NaN

■ 60.8650, 9.3401,
0.8823

0.0000, NaN, NaN

0.0000, NaN, NaN

■ 72.1462, 9.4168,
1.3601

0.0000, NaN, NaN

■ 84.0493, 9.4275,

0.0000, NaN, NaN

1.8787

96.5433, 9.3780,
2.4353

15.3882, 7.6103,
-0.7465

15.3882, 7.6103,
-0.7465

14.2142, 9.7255,
-0.9612

16.6673, 5.4757,
-0.4168

13.1604, 11.7730,
-1.0370

18.0364, 3.3541,
0.0050

12.2444, 13.6770,
-0.9481

19.4836, 1.2613,
0.5012

11.4829, 15.3391,
-0.6743

20.9990, -0.7957,
1.0574

10.8180, 16.8807,
-0.2954

22.5742, -2.8150,
1.6625

■ 10.2390, 18.3913,
-0.0243

■ 24.2022, -4.7983,
2.3077

■ 25.8774, -6.7484,
2.9865

■ 27.5951, -8.6692,
3.6935

■ 29.3511, -10.5643,
4.4248

Harmonies

Analogous

The Analogous color harmony consists of three colors that are next to each other on the color wheel.



15.3886, 5.4650, -4.9762



15.3882, 7.6103, -0.7465



15.3886, 7.3281, 2.9970

Triad

The Triadic color harmony groups three colors that are evenly spaced from another and form a triangle on the color wheel.



15.3886, 7.6097, -0.7462



15.3886, -3.2034, 6.3586



15.3886, -5.6848, -5.8184

Complementary

The Complementary color scheme is a pair of colors which are on the opposite of each other on the color wheel.



15.3882, 7.6103, -0.7465



19.5000, -8.1043, 3.3712

Split Complementary

Split-complementary colors differ from the complementary color scheme. The scheme consists of three colors, the original color and two neighbors of the complement color.



15.3886, -7.5645, -1.6886



15.3882, 7.6103, -0.7465



15.3886, -6.2378, 5.0090

Square

The Square scheme is like the rectangle color scheme, but the four colors are evenly spaced on the color wheel.



15.3886, 7.6097, -0.7462



15.3886, 0.7939, 6.4871



15.3886, -7.7559, 2.2692



15.3886, -2.3737, -8.3735

Rectangle

The Rectangle color scheme consists of four colors that form a rectangle on the color wheel.



15.3882, 7.6103, -0.7465



15.3886, 5.8071, 4.7731



15.3886, -7.7559, 2.2692



15.3886, -6.4896, -4.5255

Sweetspot

The Sweet Spot groups the original color and five complimentary colors.



15.3886, 7.6097, -0.7462



25.4683, 1.9091, 0.5967



14.6792, 6.3135, -8.1111



13.4663, 1.0522, 0.3060



62.6995, -3.3455, 3.4066



14.8260, -0.7911, 0.8055

Same Dimension

The Same Dimension uses a secret algorithm to generate beautiful new colors.



15.3886, 7.6097, -0.7462



18.6030, 13.0017, -1.2791



15.1949, 6.0701, 3.2642



10.8754, 0.3259, 0.3669



16.0932, 28.7510, 1.1670



40.6898, 72.2645, 6.2772

Inverse Universe

The Inverse Universe completely reimagines the original color for something new.



15.3886, 7.6097, -0.7462



18.6030, 13.0017, -1.2791



19.6770, -6.2865, -0.8664



10.8754, 0.3259, 0.3669



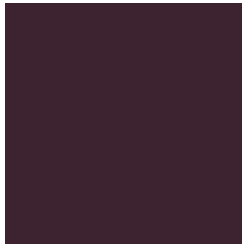
16.0932, 28.7510, 1.1670



40.6898, 72.2645, 6.2772

Previews

White Background



This preview shows how the HunterLab color 15.3882, 7.6103, -0.7465 looks on a white background.

Color Contrast Check

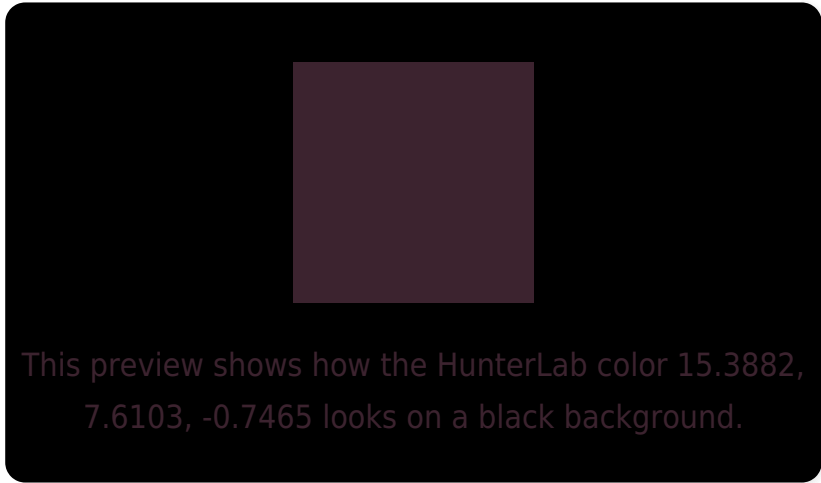
Large Text (above 18pt) WCAG AA ✓ Pass

Any Text WCAG AA ✓ Pass

Large Text (above 18pt) WCAG AAA ✓ Pass

Any Text WCAG AAA ✓ Pass

Black Background



Color Contrast Check

Large Text (above 18pt) WCAG AA × Fail

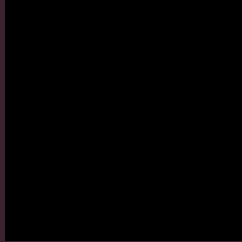
Any Text WCAG AA × Fail

Large Text (above 18pt) WCAG AAA × Fail

Any Text WCAG AAA × Fail

If you want to check with other color combinations, try the [Color Contrast Checker](#).

HunterLab 15.3882, 7.6103, -0.7465 Background



This preview shows how black text looks on a background with the HunterLab color 15.3882, 7.6103, -0.7465.



This preview shows how white text looks on a background with the HunterLab color 15.3882, 7.6103, -0.7465.

-0.7465.

Color Blindness Simulation

Color vision deficiency is a very complex topic, and I could not describe the different causes any better than Wikipedia does, so if you want to learn more, you should check out their [article about color blindness](#).

Dichromacy



Original Color

15.3882, 7.6103, -0.7465

Protanopia

15.6432, -0.0110, -2.6744

Deuteranopia

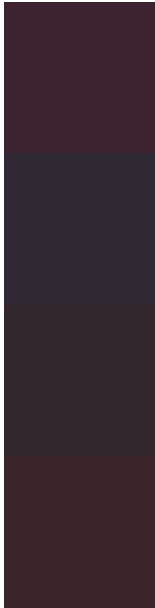
15.6014, 0.7038, -0.1971



Tritanopia

15.2907, 5.9363, 2.0832

Trichromacy



Original Color

15.3882, 7.6103, -0.7465

Protanomaly

15.4151, 2.5913, -2.0624

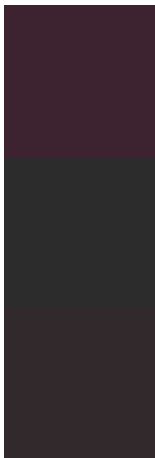
Deuteranomaly

15.3366, 3.2347, -0.4856

Tritanomaly

15.3581, 6.2756, 1.1171

Monochromacy



Original Color

15.3882, 7.6103, -0.7465

Achromatopsia

15.8704, -0.8468, 0.8623

Achromatomaly

15.6635, 2.0130, 0.2897

CSS Examples

Text

The CSS property to change the color of the text to HunterLab 15.3882, 7.6103, -0.7465 is called "color". The color property can be set on classes, ids or directly on the HTML element.

This example shows how text in the color `rgb(60, 35, 47)` looks like.

```
.text, #text, p{  
    color:rgb(60, 35, 47)  
}
```

If you want to add a text shadow in that color use the text-shadow property, you can generate a text shadow directly with our [CSS Text Shadow Generator](#).

Here you see how black text with a 4 pixel rgb(60, 35, 47) colored shadow looks like.

```
.shadow{ text-shadow: 4px 4px 2px rgb(60, 35, 47) }
```

Border

The CSS property to change the border of an element to HunterLab 15.3882, 7.6103, -0.7465 is called "border". The border property can be set on classes, ids or directly on the HTML element.

This example shows the color as border, it can be applied via the CSS property "border" or "border-color".

```
.border, #border, table{ border:4px solid rgb(60, 35, 47) }
```


If only the border color should be changed use the property `border-color`.

```
.border{ border-color:rgb(60, 35, 47) }
```

If you want to add a box shadow in that color use:

Here you see how a box with a 4 pixel `rgb(60, 35, 47)` colored shadow looks like.

```
.boxshadow{ -moz-box-shadow:4px 4px 4px  
4px rgb(60, 35, 47); -webkit-box-  
shadow:4px 4px 4px 4px rgb(60, 35, 47);  
box-shadow:4px 4px 4px 4px rgb(60, 35, 47)  
}
```

Background

The CSS property to change the background color of an element to HunterLab 15.3882, 7.6103, -0.7465 is called "background". The background property can be set on classes, ids or directly on the HTML element.

```
.background, #background, body{  
background: rgb(60, 35, 47) }
```

If only the background color should be changed can be used:

```
.background{ background-color: rgb(60, 35,  
47) }
```

This example shows the color as background, it is applied via the CSS property "background".

To optimize and compress your CSS code, you can use our [online CSS compressor and optimizer](#) based on csstidy. If you want to create a linear or radial gradient as background or border, check our [CSS Gradient Generator](#).

Hey! You found this booklet interesting? Support Converting Colors with the new Membership Option!

The pro membership hides all ads, plus gives you double the colors in the color bucket, and more awesome pro features!

[Learn more, Memberships starting at \\$2.50/m!](#)

**Follow me
on Twitter!**

@ConvertingColor