

Converting Colors

HunterLab(15.4437, 12.3371,
5.2501)

Have a look what the booklet for
HunterLab(15.4437, 12.3371,
5.2501) contains.

HunterLab(15.4399, 12.3890, 5.2672)	3
<i>Conversions</i>	4
<i>Details</i>	6
<i>Harmonies</i>	12
<i>Previews</i>	24
<i>Color Blindness Simulation</i>	28
<i>CSS Examples</i>	31

Color

**HunterLab(15.4399, 12.3890,
5.2672)**

Conversions

Conversions Part 1

Format	Color
Hex	491D1D
RGB	73, 29, 29
RGB Percent	29%, 11%, 11%
CMY	0.7137, 0.8863, 0.8863
CMYK	0.00, 0.60, 0.60, 0.71
HSL	0°, 43%, 20%
HSV	0°, 60%, 29%
XYZ	3.4088, 2.3839, 1.4429
YIQ	42.1560, 26.2240, 9.3280

Conversions

Conversions Part 2

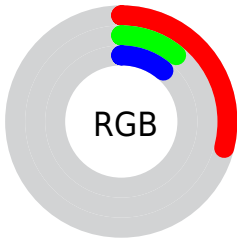
Format	Color
RYB	73, 29, 29
Decimal	4791581
CIELab	17.39, 20.99, 10.23
CIElCh	17, 23.347, 25.996
Yxy	2.3840, 0.4711, 0.3295
Android (android.graphics.Color)	4282981661 (0xFF491D1D)
YUV	42.1560, -6.4859, 27.0502
Hunter-Lab	15.4399, 12.3890, 5.2672

Details

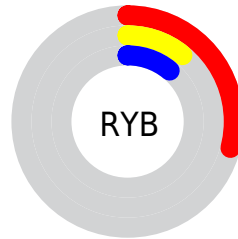
The HunterLab color **15.4399, 12.3890, 5.2672** is a dark color, and the websafe version is hex **663333**. A complement of this color would be **23.4670, -9.9443, -1.6393**, and the grayscale version is **15.2820, -0.8154, 0.8303**.

A 20% lighter version of the original color is **31.0653, 14.1888, 7.6895**, and **3.9929, 6.8379, 2.5801** is the 20% darker color. If you saturate the color by 10%, you get **14.2681, 14.6997, 5.9576**, and if you desaturate by 10%, it is **16.8101, 9.9852, 4.5611**.

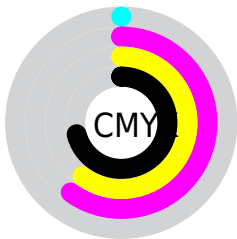
Distribution



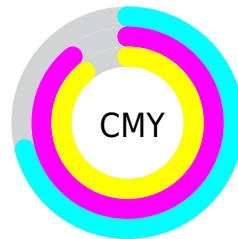
- Red (29%)
- Green (11%)
- Blue (11%)



- Red (29%)
- Yellow (11%)
- Blue (11%)



- Cyan (0%)
- Magenta (60%)
- Yellow (60%)
- Black (71%)



- Cyan (71%)
- Magenta (89%)
- Yellow (89%)

Brightness & Saturation Gradients

These gradients show how the HunterLab color 15.4399, 12.3890, 5.2672 changes by changing the brightness by 10 percent. The first figure shows a shift by +10% for each color and the second figure -10%.

Similar to the brightness gradients but the following saturation gradients show a change of the HunterLab color 15.4399, 12.3890, 5.2672 by changing the saturation by 10% instead.

■ 15.4399, 12.3890,
5.2672

■ 15.4399, 12.3890,
5.2672

■ 109.7011, 17.0529,
15.7074

■ 9.0424, 11.2885,
5.1832

■ 31.2214, 14.1860,
7.7022

0.0000, INF, NaN

0.0000, NaN, NaN

■ 40.3925, 14.8774,
8.8592

0.0000, NaN, NaN

■ 50.3189, 15.4554,
10.0004

0.0000, NaN, NaN

0.0000, NaN, NaN

■ 60.9469, 15.9343,
11.1352

0.0000, NaN, NaN

■ 72.2328, 16.3254,
12.2697

0.0000, NaN, NaN

■ 84.1404, 16.6375,

0.0000, NaN, NaN

13.4082

96.6387, 16.8780,
14.5534

15.4399, 12.3890,
5.2672

15.4399, 12.3890,
5.2672

14.2681, 14.6997,
5.9576

16.8101, 9.9852,
4.5611

13.3203, 16.7863,
6.5884

18.3498, 7.5833,
3.8672

12.5946, 18.5453,
7.1255

20.0341, 5.2350,
3.2017

11.9019, 20.3805,
7.6907

21.8413, 2.9650,
2.5713

23.7535, 0.7805,
1.9771

■ 25.7560, -1.3209,
1.4173

■ 27.8372, -3.3463,
0.8886

■ 29.9873, -5.3043,
0.3874

■ 32.1987, -7.2041,
-0.0898

Harmonies

Analogous

The Analogous color harmony consists of three colors that are next to each other on the color wheel.



15.4403, 14.0639, -0.0308



15.4399, 12.3890, 5.2672



15.4403, 6.9725, 7.9569

Triad

The Triadic color harmony groups three colors that are evenly spaced from another and form a triangle on the color wheel.



15.4403, 12.3879, 5.2675



15.4403, -10.0366, 6.2013



15.4403, -1.7050, -16.8145

Complementary

The Complementary color scheme is a pair of colors which are on the opposite of each other on the color wheel.



15.4399, 12.3890, 5.2672



23.4670, -9.9443, -1.6393

Split Complementary

Split-complementary colors differ from the complementary color scheme. The scheme consists of three colors, the original color and two neighbors of the complement color.



15.4403, -7.3278, -12.9740



15.4399, 12.3890, 5.2672



15.4403, -11.5962, 1.6637

Square

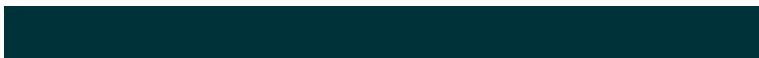
The Square scheme is like the rectangle color scheme, but the four colors are evenly spaced on the color wheel.



15.4403, 12.3879, 5.2675



15.4403, -6.0251, 8.3946



15.4403, -10.6949, -5.4767



15.4403, 5.1705, -14.5187

Rectangle

The Rectangle color scheme consists of four colors that form a rectangle on the color wheel.



15.4399, 12.3890, 5.2672



15.4403, 2.3835, 8.8424



15.4403, -10.6949, -5.4767



15.4403, -3.7906, -16.1668

Sweetspot

The Sweet Spot groups the original color and five complimentary colors.



15.4403, 12.3879, 5.2675



28.8074, 3.3981, 3.2195



16.6621, 17.8670, -11.8496



14.6660, 2.0019, 1.7302



65.8695, -3.5146, 3.5788



17.3419, -0.9253, 0.9422

Same Dimension

The Same Dimension uses a secret algorithm to generate beautiful new colors.



15.4403, 12.3879, 5.2675



17.9786, 20.3843, 8.1309



19.6795, 3.2322, 8.6809



12.3075, 0.2117, 0.9598



16.3651, 28.0240, 10.5747



40.4018, 69.1876, 26.1066

Inverse Universe

The Inverse Universe completely reimagines the original color for something new.



23.4670, -9.9443, -1.6393



30.1774, -14.3246, -2.6234



17.6349, -1.5771, -10.3532



12.9552, -1.5163, 0.4273



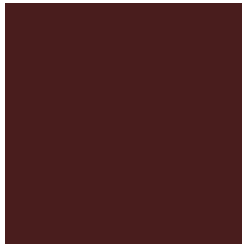
31.4923, -16.6947, -3.3237



77.7480, -41.2155, -8.2059

Previews

White Background



This preview shows how the HunterLab color 15.4399, 12.3890, 5.2672 looks on a white background.

Color Contrast Check

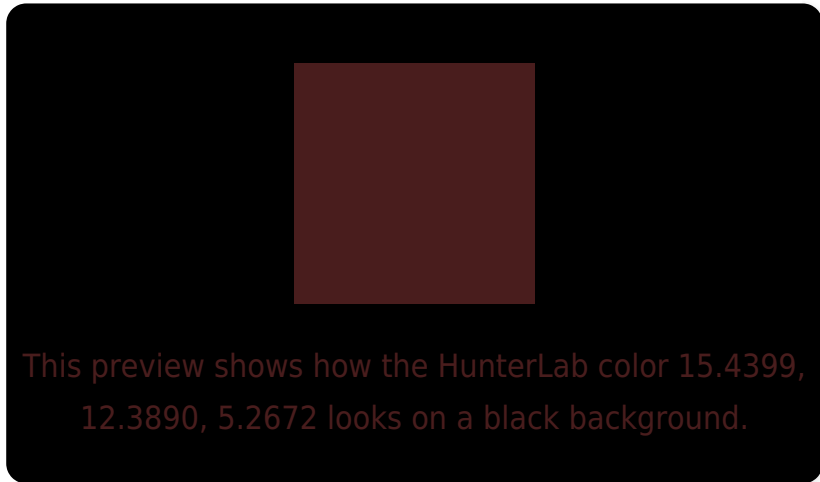
Large Text (above 18pt) WCAG AA ✓ Pass

Any Text WCAG AA ✓ Pass

Large Text (above 18pt) WCAG AAA ✓ Pass

Any Text WCAG AAA ✓ Pass

Black Background



Color Contrast Check

Large Text (above 18pt) WCAG AA × Fail

Any Text WCAG AA × Fail

Large Text (above 18pt) WCAG AAA × Fail

Any Text WCAG AAA × Fail

If you want to check with other color combinations, try the [Color Contrast Checker](#).

HunterLab 15.4399, 12.3890, 5.2672 Background



This preview shows how black text looks on a background with the HunterLab color 15.4399, 12.3890, 5.2672.



This preview shows how white text looks on a background with the HunterLab color 15.4399, 12.3890,

Color Blindness Simulation

Color vision deficiency is a very complex topic, and I could not describe the different causes any better than Wikipedia does, so if you want to learn more, you should check out their [article about color blindness](#).

Dichromacy



Original Color

15.4399, 12.3890, 5.2672

Protanopia

15.8226, -1.3955, 3.7670

Deuteranopia

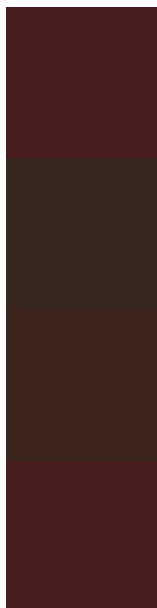
15.7859, 0.5757, 5.8428



Tritanopia

15.4730, 12.5417, 4.7866

Trichromacy



Original Color

15.4399, 12.3890, 5.2672

Protanomaly

15.4971, 3.1838, 4.1001

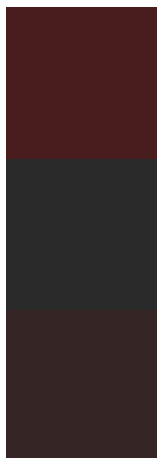
Deuteranomaly

15.3871, 4.7961, 5.3323

Tritanomaly

15.4562, 12.4642, 5.0305

Monochromacy



Original Color

15.4399, 12.3890, 5.2672

Achromatopsia

15.2162, -0.8119, 0.8267

Achromatomaly

14.8781, 3.5213, 2.2546

CSS Examples

Text

The CSS property to change the color of the text to HunterLab 15.4399, 12.3890, 5.2672 is called "color". The color property can be set on classes, ids or directly on the HTML element.

This example shows how text in the color `rgb(73, 29, 29)` looks like.

```
.text, #text, p{  
    color:rgb(73, 29, 29)  
}
```

If you want to add a text shadow in that color use the text-shadow property, you can generate a text shadow directly with our [CSS Text Shadow Generator](#).

Here you see how black text with a 4 pixel rgb(73, 29, 29) colored shadow looks like.

```
.shadow{ text-shadow: 4px 4px 2px rgb(73, 29, 29) }
```

Border

The CSS property to change the border of an element to HunterLab 15.4399, 12.3890, 5.2672 is called "border". The border property can be set on classes, ids or directly on the HTML element.

This example shows the color as border, it can be applied via the CSS property "border" or "border-color".

```
.border, #border, table{ border:4px solid rgb(73, 29, 29) }
```


If only the border color should be changed use the property `border-color`.

```
.border{ border-color:rgb(73, 29, 29) }
```

If you want to add a box shadow in that color use:

Here you see how a box with a 4 pixel `rgb(73, 29, 29)` colored shadow looks like.

```
.boxshadow{ -moz-box-shadow:4px 4px 4px  
4px rgb(73, 29, 29); -webkit-box-  
shadow:4px 4px 4px 4px rgb(73, 29, 29);  
box-shadow:4px 4px 4px 4px rgb(73, 29, 29)  
}
```

Background

The CSS property to change the background color of an element to HunterLab 15.4399, 12.3890, 5.2672 is called "background". The background property can be set on classes, ids or directly on the HTML element.

```
.background, #background, body{  
background: rgb(73, 29, 29) }
```

If only the background color should be changed can be used:

```
.background{ background-color: rgb(73, 29,  
29) }
```

This example shows the color as background, it is applied via the CSS property "background".

To optimize and compress your CSS code, you can use our [online CSS compressor and optimizer](#) based on csstidy. If you want to create a linear or radial gradient as background or border, check our [CSS Gradient Generator](#).

Hey! You found this booklet interesting? Support Converting Colors with the new Membership Option!

The pro membership hides all ads, plus gives you double the colors in the color bucket, and more awesome pro features!

[Learn more, Memberships starting at \\$2.50/m!](#)

**Follow me
on Twitter!**

@ConvertingColor