

Converting Colors

HunterLab(15.4571, 8.2338,
3.5694)

Have a look what the booklet for
HunterLab(15.4571, 8.2338, 3.5694)
contains.

HunterLab(15.4571, 8.2338, 3.5694)	3
<i>Conversions</i>	4
<i>Details</i>	6
<i>Harmonies</i>	12
<i>Previews</i>	24
<i>Color Blindness Simulation</i>	28
<i>CSS Examples</i>	31

Color

**HunterLab(15.4571, 8.2338,
3.5694)**

Conversions

Conversions Part 1

Format	Color
Hex	412223
RGB	65, 34, 35
RGB Percent	25%, 13%, 14%
CMY	0.7451, 0.8667, 0.8627
CMYK	0.00, 0.48, 0.46, 0.75
HSL	358°, 31%, 19%
HSV	358°, 48%, 25%
XYZ	3.0554, 2.3892, 1.8902
YIQ	43.3830, 18.1550, 6.8830

Conversions

Conversions Part 2

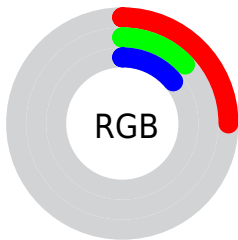
Format	Color
RYB	65, 34, 35
Decimal	4268579
CIELab	17.41, 14.97, 5.82
CIELCh	17, 16.062, 21.236
Yxy	2.3893, 0.4166, 0.3257
Android (android.graphics.Color)	4282458659 (0xFF412223)
YUV	43.3830, -4.1328, 18.9581
Hunter-Lab	15.4571, 8.2338, 3.5694

Details

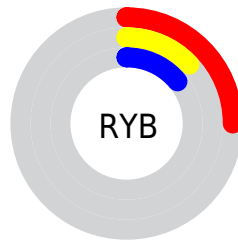
The HunterLab color **15.4571, 8.2338, 3.5694** is a dark color, and the websafe version is hex **663333**. A complement of this color would be **21.1917, -7.8109, -0.6498**, and the grayscale version is **15.6773, -0.8365, 0.8518**.

A 20% lighter version of the original color is **31.1992, 9.1751, 5.3281**, and **2.5403, 4.3503, 1.6415** is the 20% darker color. If you saturate the color by 10%, you get **14.2063, 10.3422, 4.1618**, and if you desaturate by 10%, it is **16.8452, 6.1372, 3.0096**.

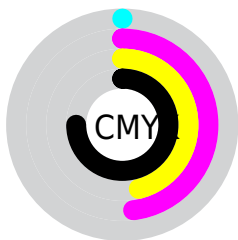
Distribution



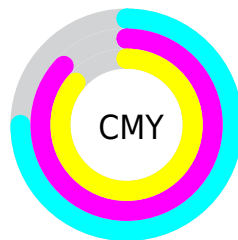
- Red (25%)
- Green (13%)
- Blue (14%)



- Red (25%)
- Yellow (13%)
- Blue (14%)



- Cyan (0%)
- Magenta (48%)
- Yellow (46%)
- Black (75%)



- Cyan (75%)
- Magenta (87%)
- Yellow (86%)

Brightness & Saturation Gradients

These gradients show how the HunterLab color 15.4571, 8.2338, 3.5694 changes by changing the brightness by 10 percent. The first figure shows a shift by +10% for each color and the second figure -10%.

Similar to the brightness gradients but the following saturation gradients show a change of the HunterLab color 15.4571, 8.2338, 3.5694 by changing the saturation by 10% instead.

■ 15.4571, 8.2338,
3.5694

■ 15.4571, 8.2338,
3.5694

■ 109.7341, 10.3046,
11.6263

■ 9.0576, 7.4658,
3.1554

■ 31.2431, 9.3594,
5.2868

0.0000, INF, NaN

0.0000, NaN, NaN

■ 40.4162, 9.7374,
6.1474

0.0000, NaN, NaN

■ 50.3444, 10.0172,
7.0191

0.0000, NaN, NaN

0.0000, NaN, NaN

■ 60.9740, 10.2118,
7.9053

0.0000, NaN, NaN

■ 72.2615, 10.3309,
8.8082

0.0000, NaN, NaN

■ 84.1706, 10.3821,

0.0000, NaN, NaN

9.7289

96.6704, 10.3717,
10.6682

15.4571, 8.2338,
3.5694

15.4571, 8.2338,
3.5694

14.2063, 10.3422,
4.1618

16.8452, 6.1372,
3.0096

13.1140, 12.4001,
4.7695

18.3493, 4.0908,
2.4885

12.2039, 14.3072,
5.3644

19.9529, 2.1097,
2.0078

11.4851, 15.9692,
5.8983

21.6419, 0.1978,
1.5654

10.7898, 17.7732,
6.4000

23.4049, -1.6476,
1.1579

■ 10.6226, 18.2348,
6.5293

■ 25.2326, -3.4324,
0.7811

■ 27.1173, -5.1637,
0.4313

■ 29.0530, -6.8486,
0.1048

■ 31.0345, -8.4938,
-0.2015

Harmonies

Analogous

The Analogous color harmony consists of three colors that are next to each other on the color wheel.



15.4575, 8.8376, -0.4853



15.4571, 8.2338, 3.5694



15.4575, 5.0610, 6.0374

Triad

The Triadic color harmony groups three colors that are evenly spaced from another and form a triangle on the color wheel.



15.4575, 8.2330, 3.5697



15.4575, -7.0897, 5.2084



15.4575, -2.1400, -9.8904

Complementary

The Complementary color scheme is a pair of colors which are on the opposite of each other on the color wheel.



15.4571, 8.2338, 3.5694



21.1917, -7.8109, -0.6498

Split Complementary

Split-complementary colors differ from the complementary color scheme. The scheme consists of three colors, the original color and two neighbors of the complement color.



15.4575, -5.9449, -7.1846



15.4571, 8.2338, 3.5694



15.4575, -8.5770, 2.0600

Square

The Square scheme is like the rectangle color scheme, but the four colors are evenly spaced on the color wheel.



15.4575, 8.2330, 3.5697



15.4575, -3.8771, 6.7748



15.4575, -8.1837, -2.4976



15.4575, 2.4827, -9.1361

Rectangle

The Rectangle color scheme consists of four colors that form a rectangle on the color wheel.



15.4571, 8.2338, 3.5694



15.4575, 2.0995, 6.8419



15.4575, -8.1837, -2.4976



15.4575, -3.5482, -9.3322

Sweetspot

The Sweet Spot groups the original color and five complimentary colors.



15.4575, 8.2330, 3.5697



26.5557, 1.9587, 2.4220



16.1700, 11.8666, -8.1654



13.8220, 1.1629, 1.3028



63.7533, -3.4017, 3.4638



15.6573, -0.8354, 0.8507

Same Dimension

The Same Dimension uses a secret algorithm to generate beautiful new colors.



15.4575, 8.2330, 3.5697



18.1739, 13.8825, 5.5338



18.4165, 2.1297, 6.5128



11.5735, 0.1930, 0.8625



15.9460, 27.3508, 9.9714



39.9088, 68.3847, 25.4805

Inverse Universe

The Inverse Universe completely reimagines the original color for something new.



15.4575, 8.2330, 3.5697



18.1739, 13.8825, 5.5338



17.4612, -2.1639, -6.2595



11.5735, 0.1930, 0.8625



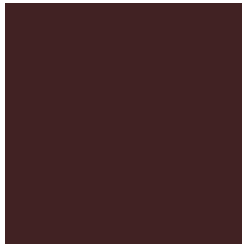
15.9460, 27.3508, 9.9714



39.9088, 68.3847, 25.4805

Previews

White Background



This preview shows how the HunterLab color 15.4571, 8.2338, 3.5694 looks on a white background.

Color Contrast Check

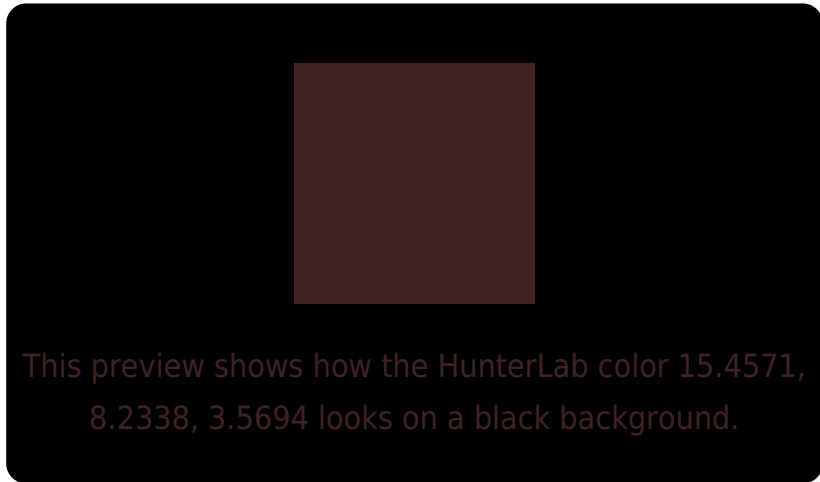
Large Text (above 18pt) WCAG AA ✓ Pass

Any Text WCAG AA ✓ Pass

Large Text (above 18pt) WCAG AAA ✓ Pass

Any Text WCAG AAA ✓ Pass

Black Background



Color Contrast Check

Large Text (above 18pt) WCAG AA × Fail

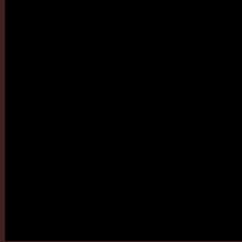
Any Text WCAG AA × Fail

Large Text (above 18pt) WCAG AAA × Fail

Any Text WCAG AAA × Fail

If you want to check with other color combinations, try the [Color Contrast Checker](#).

HunterLab 15.4571, 8.2338, 3.5694 Background



This preview shows how black text looks on a background with the HunterLab color 15.4571, 8.2338, 3.5694.



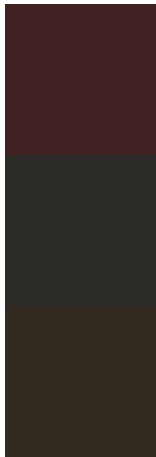
This preview shows how white text looks on a background with the HunterLab color 15.4571, 8.2338,

3.5694.

Color Blindness Simulation

Color vision deficiency is a very complex topic, and I could not describe the different causes any better than Wikipedia does, so if you want to learn more, you should check out their [article about color blindness](#).

Dichromacy



Original Color

15.4571, 8.2338, 3.5694

Protanopia

15.6168, -0.7081, 1.9891

Deuteranopia

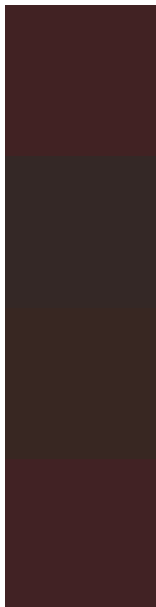
15.7329, 0.6268, 4.0023



Tritanopia

15.4766, 8.3290, 3.2883

Trichromacy



Original Color

15.4571, 8.2338, 3.5694

Protanomaly

15.4518, 2.1261, 2.5224

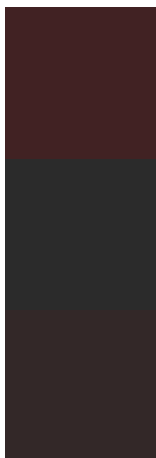
Deuteranomaly

15.5154, 3.2795, 3.8348

Tritanomaly

15.4766, 8.3290, 3.2883

Monochromacy



Original Color

15.4571, 8.2338, 3.5694

Achromatopsia

15.5427, -0.8293, 0.8445

Achromatomaly

15.4097, 2.0735, 1.8078

CSS Examples

Text

The CSS property to change the color of the text to HunterLab 15.4571, 8.2338, 3.5694 is called "color". The color property can be set on classes, ids or directly on the HTML element.

This example shows how text in the color `rgb(65, 34, 35)` looks like.

```
.text, #text, p{  
    color:rgb(65, 34, 35)  
}
```

If you want to add a text shadow in that color use the text-shadow property, you can generate a text shadow directly with our [CSS Text Shadow Generator](#).

Here you see how black text with a 4 pixel rgb(65, 34, 35) colored shadow looks like.

```
.shadow{ text-shadow: 4px 4px 2px rgb(65, 34, 35) }
```

Border

The CSS property to change the border of an element to HunterLab 15.4571, 8.2338, 3.5694 is called "border".

The border property can be set on classes, ids or directly on the HTML element.

This example shows the color as border, it can be applied via the CSS property "border" or "border-color".

```
.border, #border, table{ border:4px solid rgb(65, 34, 35) }
```


If only the border color should be changed use the property `border-color`.

```
.border{ border-color:rgb(65, 34, 35) }
```

If you want to add a box shadow in that color use:

Here you see how a box with a 4 pixel `rgb(65, 34, 35)` colored shadow looks like.

```
.boxshadow{ -moz-box-shadow:4px 4px 4px  
4px rgb(65, 34, 35); -webkit-box-  
shadow:4px 4px 4px 4px rgb(65, 34, 35);  
box-shadow:4px 4px 4px 4px rgb(65, 34, 35)  
}
```

Background

The CSS property to change the background color of an element to HunterLab 15.4571, 8.2338, 3.5694 is called "background". The background property can be set on classes, ids or directly on the HTML element.

```
.background, #background, body{  
background: rgb(65, 34, 35) }
```

If only the background color should be changed can be used:

```
.background{ background-color: rgb(65, 34,  
35) }
```

This example shows the color as background, it is applied via the CSS property "background".

To optimize and compress your CSS code, you can use our [online CSS compressor and optimizer](#) based on csstidy. If you want to create a linear or radial gradient as background or border, check our [CSS Gradient Generator](#).

Hey! You found this booklet interesting? Support Converting Colors with the new Membership Option!

The pro membership hides all ads, plus gives you double the colors in the color bucket, and more awesome pro features!

[Learn more, Memberships starting at \\$2.50/m!](#)

**Follow me
on Twitter!**

@ConvertingColor