

Converting Colors

HunterLab(15.4774, 4.0813,
6.5031)

Have a look what the booklet for
HunterLab(15.4774, 4.0813, 6.5031)
contains.

HunterLab(15.5201, 4.0223, 6.5372)	3
<i>Conversions</i>	4
<i>Details</i>	6
<i>Harmonies</i>	12
<i>Previews</i>	24
<i>Color Blindness Simulation</i>	28
<i>CSS Examples</i>	31

Color

**HunterLab(15.5201, 4.0223,
6.5372)**

Conversions

Conversions Part 1

Format	Color
Hex	3C2617
RGB	60, 38, 23
RGB Percent	24%, 15%, 9%
CMY	0.7647, 0.8510, 0.9098
CMYK	0.00, 0.37, 0.62, 0.76
HSL	24°, 45%, 16%
HSV	24°, 62%, 24%
XYZ	2.7112, 2.4087, 1.1326
YIQ	42.8680, 17.9270, -0.0010

Conversions

Conversions Part 2

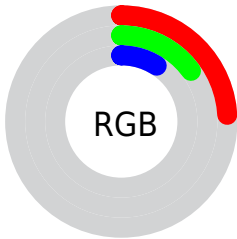
Format	Color
RYB	60, 48, 23
Decimal	3941911
CIELab	17.50, 8.37, 14.10
CIELCh	18, 16.399, 59.303
Yxy	2.4089, 0.4336, 0.3852
Android (android.graphics.Color)	4282131991 (0xFF3C2617)
YUV	42.8680, -9.7949, 15.0248
Hunter-Lab	15.5201, 4.0223, 6.5372

Details

The HunterLab color **15.5201, 4.0223, 6.5372** is a dark color, and the websafe version is hex **333333**. A complement of this color would be **15.4435, -2.6699, -6.9426**, and the grayscale version is **15.5267, -0.8285, 0.8436**.

A 20% lighter version of the original color is **31.3545, 4.2412, 9.6483**, and 0.0000, NaN, NaN is the 20% darker color. If you saturate the color by 10%, you get **14.7315, 5.1078, 7.0325**, and if you desaturate by 10%, it is **16.3551, 3.0075, 5.9166**.

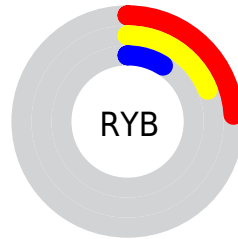
Distribution



Red (24%)

Green (15%)

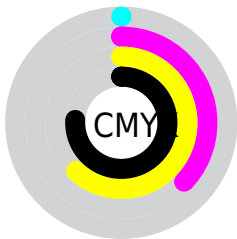
Blue (9%)



Red (24%)

Yellow (19%)

Blue (9%)

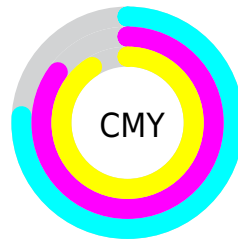


Cyan (0%)

Magenta (37%)

Yellow (62%)

Black (76%)



Cyan (76%)

Magenta (85%)

Yellow (91%)

Brightness & Saturation Gradients

These gradients show how the HunterLab color 15.5201, 4.0223, 6.5372 changes by changing the brightness by 10 percent. The first figure shows a shift by +10% for each color and the second figure -10%.

Similar to the brightness gradients but the following saturation gradients show a change of the HunterLab color 15.5201, 4.0223, 6.5372 by changing the saturation by 10% instead.

15.5201, 4.0223,
6.5372

15.5201, 4.0223,
6.5372

109.8551, 3.0649,
19.1569

9.1128, 3.6989,
6.3790

31.3227, 4.3273,
9.6331

0.0000, NaN, NaN

0.0000, NaN, NaN

40.5030, 4.3369,
11.0624

0.0000, NaN, NaN

50.4377, 4.2706,
12.4504

0.0000, NaN, NaN

0.0000, NaN, NaN

61.0735, 4.1380,
13.8121

0.0000, NaN, NaN

72.3668, 3.9460,
15.1576

0.0000, NaN, NaN

84.2814, 3.7004,

0.0000, NaN, NaN

16.4937

■ 96.7864, 3.4055,
17.8256

■ 15.5201, 4.0223,
6.5372

■ 15.5201, 4.0223,
6.5372

■ 14.7315, 5.1078,
7.0325

■ 16.3551, 3.0075,
5.9166

■ 13.9924, 6.2626,
7.3901

■ 17.2313, 2.0662,
5.1827

■ 13.3015, 7.4491,
7.6867

■ 18.1457, 1.1958,
4.3477

■ 12.7573, 8.4135,
8.0083

■ 19.0948, 0.3930,
3.4226

■ 20.0758, -0.3462,
2.4173

■ 21.0860, -1.0263,
1.3407

■ 22.1230, -1.6519,
0.2004

■ 23.1849, -2.2273,
-0.9970

■ 24.2698, -2.7568,
-2.2458

Harmonies

Analogous

The Analogous color harmony consists of three colors that are next to each other on the color wheel.



15.5205, 7.7948, 4.4681



15.5201, 4.0223, 6.5372



15.5205, -0.7197, 7.1849

Triad

The Triadic color harmony groups three colors that are evenly spaced from another and form a triangle on the color wheel.



15.5205, 4.0215, 6.5374



15.5205, -8.8195, 0.9483



15.5205, 3.8104, -8.5920

Complementary

The Complementary color scheme is a pair of colors which are on the opposite of each other on the color wheel.



15.5201, 4.0223, 6.5372



15.4435, -2.6699, -6.9426

Split Complementary

Split-complementary colors differ from the complementary color scheme. The scheme consists of three colors, the original color and two neighbors of the complement color.



15.5205, -0.9380, -10.3406



15.5201, 4.0223, 6.5372



15.5205, -7.9031, -3.9393

Square

The Square scheme is like the rectangle color scheme, but the four colors are evenly spaced on the color wheel.



15.5205, 4.0215, 6.5374



15.5205, -7.8144, 4.6005



15.5205, -5.1484, -8.4308



15.5205, 7.6631, -4.1738

Rectangle

The Rectangle color scheme consists of four colors that form a rectangle on the color wheel.



15.5201, 4.0223, 6.5372



15.5205, -3.6846, 6.9338



15.5205, -5.1484, -8.4308



15.5205, 2.2493, -9.5606

Sweetspot

The Sweet Spot groups the original color and five complimentary colors.



15.5205, 4.0215, 6.5374



25.4922, 0.2362, 4.1440



13.2833, 12.3296, -2.7705



13.4170, 0.1958, 2.2876



62.6995, -3.3455, 3.4066



14.8260, -0.7911, 0.8055

Same Dimension

The Same Dimension uses a secret algorithm to generate beautiful new colors.



15.5205, 4.0215, 6.5374



18.8109, 7.6058, 9.5561



19.6977, -3.2357, 9.6411



11.1122, -0.3108, 1.1329



19.4956, 14.8974, 12.2739



47.7596, 42.4863, 30.1730

Inverse Universe

The Inverse Universe completely reimagines the original color for something new.



15.4435, -2.6699, -6.9426



18.6651, -3.0656, -12.0797



11.3075, 4.7442, -15.3647



11.1073, -0.8488, 0.0563



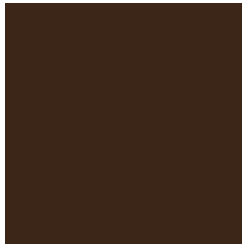
19.1104, -1.1724, -21.3554



46.6276, 0.3346, -59.0028

Previews

White Background



This preview shows how the HunterLab color 15.5201, 4.0223, 6.5372 looks on a white background.

Color Contrast Check

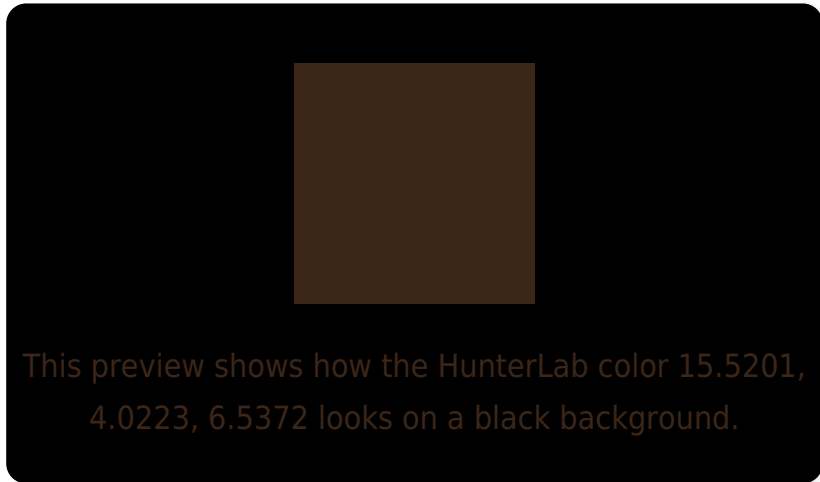
Large Text (above 18pt) WCAG AA ✓ Pass

Any Text WCAG AA ✓ Pass

Large Text (above 18pt) WCAG AAA ✓ Pass

Any Text WCAG AAA ✓ Pass

Black Background



Color Contrast Check

Large Text (above 18pt) WCAG AA × Fail

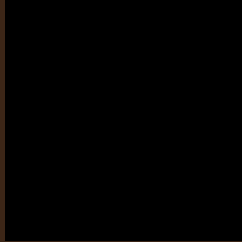
Any Text WCAG AA × Fail

Large Text (above 18pt) WCAG AAA × Fail

Any Text WCAG AAA × Fail

If you want to check with other color combinations, try the [Color Contrast Checker](#).

HunterLab 15.5201, 4.0223, 6.5372 Background



This preview shows how black text looks on a background with the HunterLab color 15.5201, 4.0223, 6.5372.

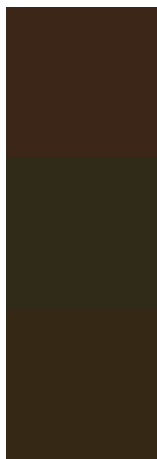


This preview shows how white text looks on a background with the HunterLab color 15.5201, 4.0223,

Color Blindness Simulation

Color vision deficiency is a very complex topic, and I could not describe the different causes any better than Wikipedia does, so if you want to learn more, you should check out their [article about color blindness](#).

Dichromacy



Original Color

15.5201, 4.0223, 6.5372

Protanopia

15.5766, -1.3806, 6.0734

Deuteranopia

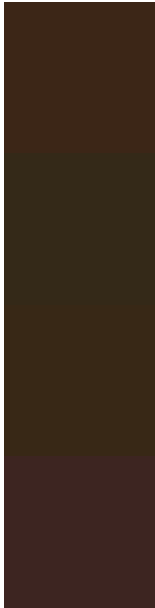
15.4942, 0.6030, 6.6534



Tritanopia

15.4930, 6.5474, 2.3158

Trichromacy



Original Color

15.5201, 4.0223, 6.5372

Protanomaly

15.4334, 0.4487, 6.1980

Deuteranomaly

15.5443, 1.9018, 6.7164

Tritanomaly

15.5725, 5.5371, 4.2145

Monochromacy



Original Color

15.5201, 4.0223, 6.5372

Achromatopsia

15.5427, -0.8293, 0.8445

Achromatomaly

15.3825, 0.6751, 3.0572

CSS Examples

Text

The CSS property to change the color of the text to HunterLab 15.5201, 4.0223, 6.5372 is called "color". The color property can be set on classes, ids or directly on the HTML element.

This example shows how text in the color `rgb(60, 38, 23)` looks like.

```
.text, #text, p{  
    color:rgb(60, 38, 23)  
}
```

If you want to add a text shadow in that color use the text-shadow property, you can generate a text shadow directly with our [CSS Text Shadow Generator](#).

Here you see how black text with a 4 pixel rgb(60, 38, 23) colored shadow looks like.

```
.shadow{ text-shadow: 4px 4px 2px rgb(60, 38, 23) }
```

Border

The CSS property to change the border of an element to HunterLab 15.5201, 4.0223, 6.5372 is called "border".

The border property can be set on classes, ids or directly on the HTML element.

This example shows the color as border, it can be applied via the CSS property "border" or "border-color".

```
.border, #border, table{ border:4px solid rgb(60, 38, 23) }
```


If only the border color should be changed use the property `border-color`.

```
.border{ border-color:rgb(60, 38, 23) }
```

If you want to add a box shadow in that color use:

Here you see how a box with a 4 pixel `rgb(60, 38, 23)` colored shadow looks like.

```
.boxshadow{ -moz-box-shadow:4px 4px 4px  
4px rgb(60, 38, 23); -webkit-box-  
shadow:4px 4px 4px 4px rgb(60, 38, 23);  
box-shadow:4px 4px 4px 4px rgb(60, 38, 23)  
}
```

Background

The CSS property to change the background color of an element to HunterLab 15.5201, 4.0223, 6.5372 is called "background". The background property can be set on classes, ids or directly on the HTML element.

```
.background, #background, body{  
background: rgb(60, 38, 23) }
```

If only the background color should be changed can be used:

```
.background{ background-color: rgb(60, 38,  
23) }
```

This example shows the color as background, it is applied via the CSS property "background".

To optimize and compress your CSS code, you can use our [online CSS compressor and optimizer](#) based on csstidy. If you want to create a linear or radial gradient as background or border, check our [CSS Gradient Generator](#).

Hey! You found this booklet
interesting? Support Converting
Colors with the new Membership
Option!

The pro membership hides all ads, plus gives you
double the colors in the color bucket, and more
awesome pro features!

[Learn more, Memberships starting at \\$2.50/m!](#)

**Follow me
on Twitter!**

@ConvertingColor