

Converting Colors

HunterLab(15.4989, 11.6273,
4.7917)

Have a look what the booklet for
HunterLab(15.4989, 11.6273,
4.7917) contains.

HunterLab(15.5087, 11.8095, 4.8073)	3
<i>Conversions</i>	4
<i>Details</i>	6
<i>Harmonies</i>	12
<i>Previews</i>	24
<i>Color Blindness Simulation</i>	28
<i>CSS Examples</i>	31

Color

**HunterLab(15.5087, 11.8095,
4.8073)**

Conversions

Conversions Part 1

Format	Color
Hex	481E1F
RGB	72, 30, 31
RGB Percent	28%, 12%, 12%
CMY	0.7176, 0.8823, 0.8784
CMYK	0.00, 0.58, 0.57, 0.72
HSL	359°, 41%, 20%
HSV	359°, 58%, 28%
XYZ	3.3841, 2.4052, 1.5822
YIQ	42.6720, 24.7110, 9.2150

Conversions

Conversions Part 2

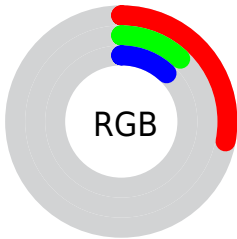
Format	Color
R_{YB}	72, 30, 31
Decimal	4726303
CIE Lab	17.48, 20.16, 8.93
CIE LCh	17, 22.047, 23.886
Yxy	2.4053, 0.4591, 0.3263
Android (android.graphics.Color)	4282916383 (0xFF481E1F)
YUV	42.6720, -5.7543, 25.7207
Hunter-Lab	15.5087, 11.8095, 4.8073

Details

The HunterLab color **15.5087, 11.8095, 4.8073** is a dark color, and the websafe version is hex **663333**. A complement of this color would be **23.1641, -9.7886, -1.1570**, and the grayscale version is **15.4484, -0.8243, 0.8393**.

A 20% lighter version of the original color is **31.2268, 13.6878, 6.8426**, and **3.9929, 6.8379, 2.5801** is the 20% darker color. If you saturate the color by 10%, you get **14.3127, 14.1075, 5.4931**, and if you desaturate by 10%, it is **16.8927, 9.4363, 4.1297**.

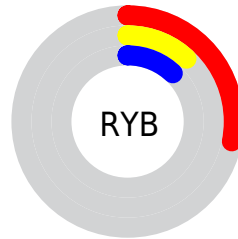
Distribution



Red (28%)

Green (12%)

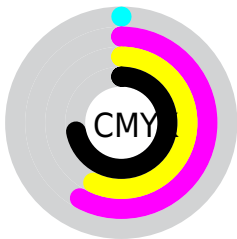
Blue (12%)



Red (28%)

Yellow (12%)

Blue (12%)

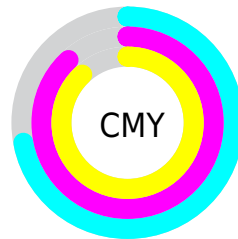


Cyan (0%)

Magenta (58%)

Yellow (57%)

Black (72%)



Cyan (72%)

Magenta (88%)

Yellow (88%)

Brightness & Saturation Gradients

These gradients show how the HunterLab color 15.5087, 11.8095, 4.8073 changes by changing the brightness by 10 percent. The first figure shows a shift by +10% for each color and the second figure -10%.

Similar to the brightness gradients but the following saturation gradients show a change of the HunterLab color 15.5087, 11.8095, 4.8073 by changing the saturation by 10% instead.

■ 15.5087, 11.8095,
4.8073

■ 15.5087, 11.8095,
4.8073

■ 109.8333, 16.1181,
14.5290

■ 9.1029, 10.7387,
4.5606

■ 31.3083, 13.5158,
7.0242

0.0000, INF, NaN

0.0000, NaN, NaN

■ 40.4873, 14.1643,
8.0916

0.0000, NaN, NaN

■ 50.4209, 14.7013,
9.1516

0.0000, NaN, NaN

■ 61.0555, 15.1411,
10.2117

0.0000, NaN, NaN

0.0000, NaN, NaN

■ 72.3478, 15.4947,
11.2767

0.0000, NaN, NaN

■ 84.2614, 15.7708,

0.0000, NaN, NaN

12.3499

■ 96.7654, 15.9766,
13.4335

■ 15.5087, 11.8095,
4.8073

■ 15.5087, 11.8095,
4.8073

■ 14.3127, 14.1075,
5.4931

■ 16.8927, 9.4363,
4.1297

■ 13.3301, 16.2106,
6.1495

■ 18.4367, 7.0728,
3.4818

■ 12.5771, 17.9842,
6.7229

■ 20.1174, 4.7636,
2.8744

■ 11.8749, 19.8244,
7.2508

■ 21.9143, 2.5296,
2.3104

■ 11.7536, 20.1602,
7.3477

■ 23.8107, 0.3760,
1.7884

■ 25.7931, -1.6999,
1.3048

■ 27.8502, -3.7051,
0.8555

■ 29.9733, -5.6479,
0.4360

■ 32.1550, -7.5368,
0.0424

Harmonies

Analogous

The Analogous color harmony consists of three colors that are next to each other on the color wheel.



15.5091, 13.0742, -0.4279



15.5087, 11.8095, 4.8073



15.5091, 6.9376, 7.5593

Triad

The Triadic color harmony groups three colors that are evenly spaced from another and form a triangle on the color wheel.



15.5091, 11.8084, 4.8076



15.5091, -9.4167, 6.1973



15.5091, -2.0919, -15.4397

Complementary

The Complementary color scheme is a pair of colors which are on the opposite of each other on the color wheel.



15.5087, 11.8095, 4.8073



23.1641, -9.7886, -1.1570

Split Complementary

Split-complementary colors differ from the complementary color scheme. The scheme consists of three colors, the original color and two neighbors of the complement color.



15.5091, -7.3146, -11.5747



15.5087, 11.8095, 4.8073



15.5091, -11.0889, 2.0169

Square

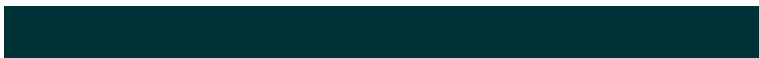
The Square scheme is like the rectangle color scheme, but the four colors are evenly spaced on the color wheel.



15.5091, 11.8084, 4.8076



15.5091, -5.4151, 8.1870



15.5091, -10.3854, -4.5556



15.5091, 4.3623, -13.7322

Rectangle

The Rectangle color scheme consists of four colors that form a rectangle on the color wheel.



15.5087, 11.8095, 4.8073



15.5091, 2.6622, 8.4601



15.5091, -10.3854, -4.5556



15.5091, -4.0352, -14.7128

Sweetspot

The Sweet Spot groups the original color and five complimentary colors.



15.5091, 11.8084, 4.8076



29.0711, 3.1505, 3.0021



16.4957, 16.6168, -11.5806



14.9034, 1.7534, 1.5814



65.8695, -3.5146, 3.5788



17.3419, -0.9253, 0.9422

Same Dimension

The Same Dimension uses a secret algorithm to generate beautiful new colors.



15.5091, 11.8084, 4.8076



18.2657, 19.9003, 7.6440



19.2840, 3.5607, 8.1680



12.3093, 0.2220, 0.9329



16.3806, 28.0839, 10.3398



40.4161, 69.2430, 25.8893

Inverse Universe

The Inverse Universe completely reimagines the original color for something new.



15.5091, 11.8084, 4.8076



18.2657, 19.9003, 7.6440



17.9886, -2.1957, -9.1612



12.3093, 0.2220, 0.9329



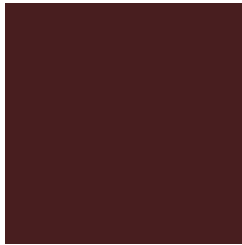
16.3806, 28.0839, 10.3398



40.4161, 69.2430, 25.8893

Previews

White Background



This preview shows how the HunterLab color 15.5087, 11.8095, 4.8073 looks on a white background.

Color Contrast Check

Large Text (above 18pt) WCAG AA ✓ Pass

Any Text WCAG AA ✓ Pass

Large Text (above 18pt) WCAG AAA ✓ Pass

Any Text WCAG AAA ✓ Pass

Black Background



Color Contrast Check

Large Text (above 18pt) WCAG AA × Fail

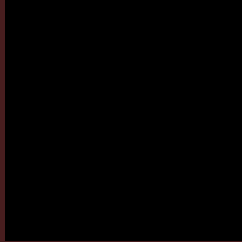
Any Text WCAG AA × Fail

Large Text (above 18pt) WCAG AAA × Fail

Any Text WCAG AAA × Fail

If you want to check with other color combinations, try the [Color Contrast Checker](#).

HunterLab 15.5087, 11.8095, 4.8073 Background



This preview shows how black text looks on a background with the HunterLab color 15.5087, 11.8095, 4.8073.

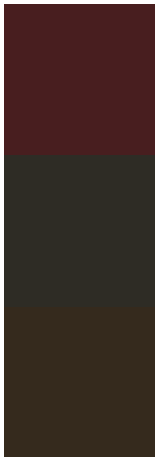


This preview shows how white text looks on a background with the HunterLab color 15.5087, 11.8095,

Color Blindness Simulation

Color vision deficiency is a very complex topic, and I could not describe the different causes any better than Wikipedia does, so if you want to learn more, you should check out their [article about color blindness](#).

Dichromacy



Original Color

15.5087, 11.8095, 4.8073

Protanopia

15.8612, -1.1831, 3.2103

Deuteranopia

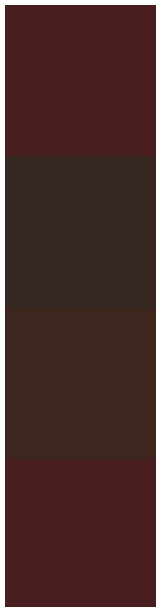
15.8162, 0.7388, 5.4013



Tritanopia

15.5259, 11.8899, 4.5568

Trichromacy



Original Color

15.5087, 11.8095, 4.8073

Protanomaly

15.4422, 3.0815, 3.4642

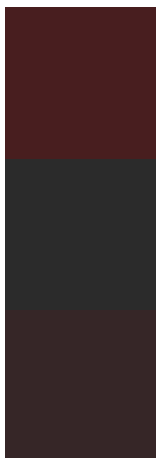
Deuteranomaly

15.6225, 4.5494, 5.0446

Tritanomaly

15.5259, 11.8899, 4.5568

Monochromacy



Original Color

15.5087, 11.8095, 4.8073

Achromatopsia

15.5427, -0.8293, 0.8445

Achromatomaly

15.2216, 3.6247, 1.9665

CSS Examples

Text

The CSS property to change the color of the text to HunterLab 15.5087, 11.8095, 4.8073 is called "color". The color property can be set on classes, ids or directly on the HTML element.

This example shows how text in the color `rgb(72, 30, 31)` looks like.

```
.text, #text, p{  
    color:rgb(72, 30, 31)  
}
```

If you want to add a text shadow in that color use the text-shadow property, you can generate a text shadow directly with our [CSS Text Shadow Generator](#).

Here you see how black text with a 4 pixel rgb(72, 30, 31) colored shadow looks like.

```
.shadow{ text-shadow: 4px 4px 2px rgb(72, 30, 31) }
```

Border

The CSS property to change the border of an element to HunterLab 15.5087, 11.8095, 4.8073 is called "border". The border property can be set on classes, ids or directly on the HTML element.

This example shows the color as border, it can be applied via the CSS property "border" or "border-color".

```
.border, #border, table{ border:4px solid rgb(72, 30, 31) }
```


If only the border color should be changed use the property `border-color`.

```
.border{ border-color:rgb(72, 30, 31) }
```

If you want to add a box shadow in that color use:

Here you see how a box with a 4 pixel `rgb(72, 30, 31)` colored shadow looks like.

```
.boxshadow{ -moz-box-shadow:4px 4px 4px  
4px rgb(72, 30, 31); -webkit-box-  
shadow:4px 4px 4px 4px rgb(72, 30, 31);  
box-shadow:4px 4px 4px 4px rgb(72, 30, 31)  
}
```

Background

The CSS property to change the background color of an element to HunterLab 15.5087, 11.8095, 4.8073 is called "background". The background property can be set on classes, ids or directly on the HTML element.

```
.background, #background, body{  
background: rgb(72, 30, 31) }
```

If only the background color should be changed can be used:

```
.background{ background-color: rgb(72, 30,  
31) }
```

This example shows the color as background, it is applied via the CSS property "background".

To optimize and compress your CSS code, you can use our [online CSS compressor and optimizer](#) based on csstidy. If you want to create a linear or radial gradient as background or border, check our [CSS Gradient Generator](#).

Hey! You found this booklet interesting? Support Converting Colors with the new Membership Option!

The pro membership hides all ads, plus gives you double the colors in the color bucket, and more awesome pro features!

[Learn more, Memberships starting at \\$2.50/m!](#)

**Follow me
on Twitter!**

@ConvertingColor