

Converting Colors

HunterLab(15.7467, 6.8419,
6.5316)

Have a look what the booklet for
HunterLab(15.7467, 6.8419, 6.5316)
contains.

HunterLab(15.7669, 6.8528, 6.5859)	3
<i>Conversions</i>	4
<i>Details</i>	6
<i>Harmonies</i>	12
<i>Previews</i>	24
<i>Color Blindness Simulation</i>	28
<i>CSS Examples</i>	31

Color

**HunterLab(15.7669, 6.8528,
6.5859)**

Conversions

Conversions Part 1

Format	Color
Hex	422418
RGB	66, 36, 24
RGB Percent	26%, 14%, 9%
CMY	0.7412, 0.8588, 0.9059
CMYK	0.00, 0.45, 0.64, 0.74
HSL	17°, 47%, 18%
HSV	17°, 64%, 26%
XYZ	3.0425, 2.4860, 1.1836
YIQ	43.6020, 21.7320, 2.6280

Conversions

Conversions Part 2

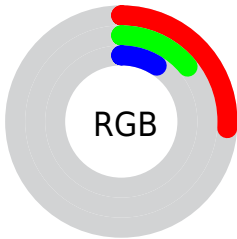
Format	Color
RYB	66, 41, 24
Decimal	4334616
CIELab	17.86, 12.83, 14.07
CIELCh	18, 19.039, 47.633
Yxy	2.4861, 0.4533, 0.3704
Android (android.graphics.Color)	4282524696 (0xFF422418)
YUV	43.6020, -9.6638, 19.6430
Hunter-Lab	15.7669, 6.8528, 6.5859

Details

The HunterLab color **15.7669, 6.8528, 6.5859** is a dark color, and the websafe version is hex **663333**. A complement of this color would be **17.9603, -4.8034, -6.0321**, and the grayscale version is **15.7658, -0.8412, 0.8566**.

A 20% lighter version of the original color is **31.6277, 7.6250, 9.6677**, and **2.4099, 4.1271, 1.5572** is the 20% darker color. If you saturate the color by 10%, you get **14.8158, 8.3927, 7.0878**, and if you desaturate by 10%, it is **16.7970, 5.3765, 5.9655**.

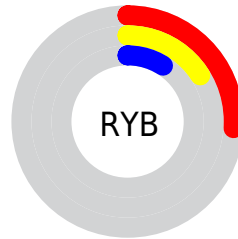
Distribution



Red (26%)

Green (14%)

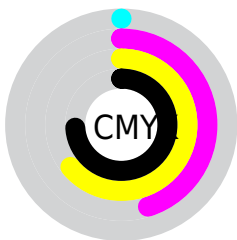
Blue (9%)



Red (26%)

Yellow (16%)

Blue (9%)

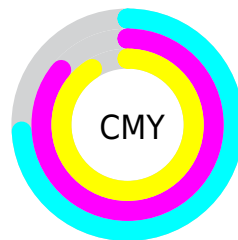


Cyan (0%)

Magenta (45%)

Yellow (64%)

Black (74%)



Cyan (74%)

Magenta (86%)

Yellow (91%)

Brightness & Saturation Gradients

These gradients show how the HunterLab color 15.7669, 6.8528, 6.5859 changes by changing the brightness by 10 percent. The first figure shows a shift by +10% for each color and the second figure -10%.

Similar to the brightness gradients but the following saturation gradients show a change of the HunterLab color 15.7669, 6.8528, 6.5859 by changing the saturation by 10% instead.

15.7669, 6.8528,
6.5859

15.7669, 6.8528,
6.5859

110.3281, 7.9292,
19.1736

9.3255, 6.1962,
6.5279

31.6343, 7.7101,
9.6681

0.0000, INF, NaN

0.0000, NaN, NaN

40.8424, 7.9671,
11.0931

0.0000, NaN, NaN

50.8028, 8.1332,
12.4777

0.0000, NaN, NaN

0.0000, NaN, NaN

61.4625, 8.2201,
13.8366

0.0000, NaN, NaN

72.7784, 8.2368,
15.1797

0.0000, NaN, NaN

84.7144, 8.1904,

0.0000, NaN, NaN

16.5138

■ 97.2398, 8.0863,
17.8439

■ 15.7669, 6.8528,
6.5859

■ 15.7669, 6.8528,
6.5859

■ 14.8158, 8.3927,
7.0878

■ 16.7970, 5.3765,
5.9655

■ 13.9514, 9.9795,
7.4516

■ 17.8965, 3.9765,
5.2440

■ 13.1755, 11.5443,
7.7780

■ 19.0582, 2.6551,
4.4380

■ 12.7250, 12.4810,
8.0596

■ 20.2754, 1.4113,
3.5611

■ 21.5423, 0.2411,
2.6247

■ 22.8539, -0.8607,
1.6379

■ 24.2058, -1.8998,
0.6082

■ 25.5944, -2.8822,
-0.4586

■ 27.0163, -3.8134,
-1.5576

Harmonies

Analogous

The Analogous color harmony consists of three colors that are next to each other on the color wheel.



15.7673, 10.4280, 3.5870



15.7669, 6.8528, 6.5859



15.7673, 1.4635, 7.8328

Triad

The Triadic color harmony groups three colors that are evenly spaced from another and form a triangle on the color wheel.



15.7673, 6.8519, 6.5861



15.7673, -9.8213, 2.8459



15.7673, 2.4564, -11.8898

Complementary

The Complementary color scheme is a pair of colors which are on the opposite of each other on the color wheel.



15.7669, 6.8528, 6.5859



17.9603, -4.8034, -6.0321

Split Complementary

Split-complementary colors differ from the complementary color scheme. The scheme consists of three colors, the original color and two neighbors of the complement color.



15.7673, -3.0225, -12.2991



15.7669, 6.8528, 6.5859



15.7673, -9.6311, -2.4666

Square

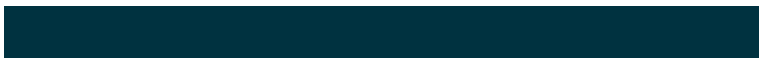
The Square scheme is like the rectangle color scheme, but the four colors are evenly spaced on the color wheel.



15.7673, 6.8519, 6.5861



15.7673, -7.8561, 6.2029



15.7673, -7.2956, -8.4162



15.7673, 7.6631, -7.4368

Rectangle

The Rectangle color scheme consists of four colors that form a rectangle on the color wheel.



15.7669, 6.8528, 6.5859



15.7673, -2.2088, 7.9046



15.7673, -7.2956, -8.4162



15.7673, 0.5727, -12.5484

Sweetspot

The Sweet Spot groups the original color and five complimentary colors.



15.7673, 6.8519, 6.5861



27.3498, 1.2619, 4.2321



14.4181, 14.9003, -5.2572



13.8158, 0.7408, 2.2312



63.7533, -3.4017, 3.4638



15.6573, -0.8354, 0.8507

Same Dimension

The Same Dimension uses a secret algorithm to generate beautiful new colors.



15.7673, 6.8519, 6.5861



18.8640, 12.2445, 9.6376



20.3484, -1.6629, 9.9915



11.7786, -0.1754, 1.1274



18.3079, 19.8996, 11.6296



44.2630, 54.4298, 28.2275

Inverse Universe

The Inverse Universe completely reimagines the original color for something new.



17.9603, -4.8034, -6.0321



22.2693, -6.3272, -10.2243



12.9647, 3.5637, -15.5202



11.9506, -1.0596, 0.1521



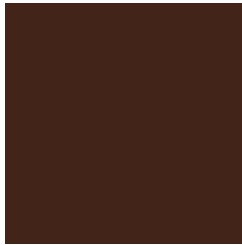
22.6789, -5.8905, -15.6307



55.3542, -12.6167, -41.9521

Previews

White Background



This preview shows how the HunterLab color 15.7669, 6.8528, 6.5859 looks on a white background.

Color Contrast Check

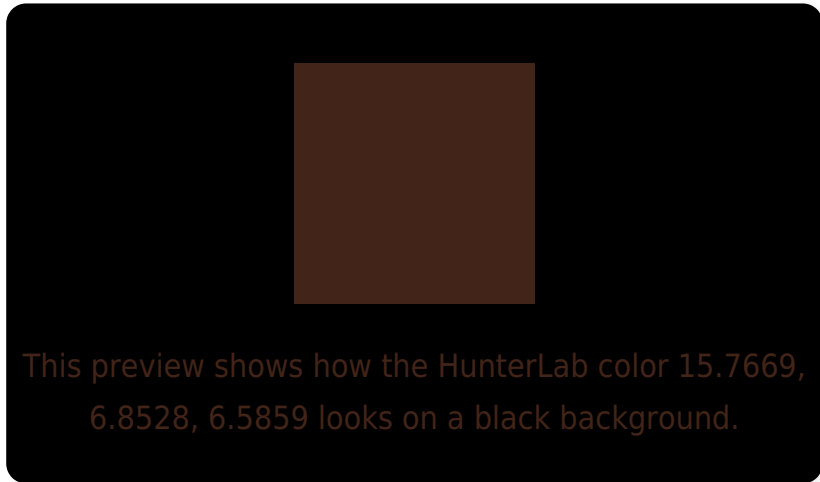
Large Text (above 18pt) WCAG AA ✓ Pass

Any Text WCAG AA ✓ Pass

Large Text (above 18pt) WCAG AAA ✓ Pass

Any Text WCAG AAA ✓ Pass

Black Background



Color Contrast Check

Large Text (above 18pt) WCAG AA × Fail

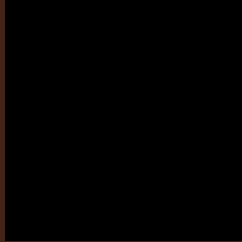
Any Text WCAG AA × Fail

Large Text (above 18pt) WCAG AAA × Fail

Any Text WCAG AAA × Fail

If you want to check with other color combinations, try the [Color Contrast Checker](#).

HunterLab 15.7669, 6.8528, 6.5859 Background



This preview shows how black text looks on a background with the HunterLab color 15.7669, 6.8528, 6.5859.

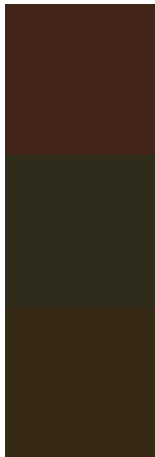


This preview shows how white text looks on a background with the HunterLab color 15.7669, 6.8528,

Color Blindness Simulation

Color vision deficiency is a very complex topic, and I could not describe the different causes any better than Wikipedia does, so if you want to learn more, you should check out their [article about color blindness](#).

Dichromacy



Original Color

15.7669, 6.8528, 6.5859

Protanopia

15.8394, -1.6030, 5.8508

Deuteranopia

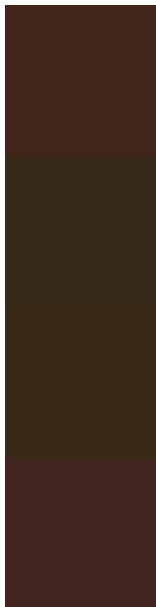
15.8179, 0.5748, 6.7186



Tritanopia

15.7192, 9.0643, 3.2431

Trichromacy



Original Color

15.7669, 6.8528, 6.5859

Protanomaly

15.7248, 1.4841, 6.0307

Deuteranomaly

15.7448, 2.5847, 6.6946

Tritanomaly

15.8102, 8.1950, 4.7612

Monochromacy



Original Color

15.7669, 6.8528, 6.5859

Achromatopsia

15.8704, -0.8468, 0.8623

Achromatomaly

15.6509, 1.6145, 3.0418

CSS Examples

Text

The CSS property to change the color of the text to HunterLab 15.7669, 6.8528, 6.5859 is called "color". The color property can be set on classes, ids or directly on the HTML element.

This example shows how text in the color `rgb(66, 36, 24)` looks like.

```
.text, #text, p{  
    color:rgb(66, 36, 24)  
}
```

If you want to add a text shadow in that color use the text-shadow property, you can generate a text shadow directly with our [CSS Text Shadow Generator](#).

Here you see how black text with a 4 pixel rgb(66, 36, 24) colored shadow looks like.

```
.shadow{ text-shadow: 4px 4px 2px rgb(66, 36, 24) }
```

Border

The CSS property to change the border of an element to HunterLab 15.7669, 6.8528, 6.5859 is called "border".

The border property can be set on classes, ids or directly on the HTML element.

This example shows the color as border, it can be applied via the CSS property "border" or "border-color".

```
.border, #border, table{ border:4px solid rgb(66, 36, 24) }
```


If only the border color should be changed use the property `border-color`.

```
.border{ border-color:rgb(66, 36, 24) }
```

If you want to add a box shadow in that color use:

Here you see how a box with a 4 pixel `rgb(66, 36, 24)` colored shadow looks like.

```
.boxshadow{ -moz-box-shadow:4px 4px 4px  
4px rgb(66, 36, 24); -webkit-box-  
shadow:4px 4px 4px 4px rgb(66, 36, 24);  
box-shadow:4px 4px 4px 4px rgb(66, 36, 24)  
}
```

Background

The CSS property to change the background color of an element to HunterLab 15.7669, 6.8528, 6.5859 is called "background". The background property can be set on classes, ids or directly on the HTML element.

```
.background, #background, body{  
background: rgb(66, 36, 24) }
```

If only the background color should be changed can be used:

```
.background{ background-color: rgb(66, 36,  
24) }
```

This example shows the color as background, it is applied via the CSS property "background".

To optimize and compress your CSS code, you can use our [online CSS compressor and optimizer](#) based on csstidy. If you want to create a linear or radial gradient as background or border, check our [CSS Gradient Generator](#).

Hey! You found this booklet interesting? Support Converting Colors with the new Membership Option!

The pro membership hides all ads, plus gives you double the colors in the color bucket, and more awesome pro features!

[Learn more, Memberships starting at \\$2.50/m!](#)

**Follow me
on Twitter!**

@ConvertingColor