

Converting Colors

HunterLab(15.8243, 9.4369,
4.5135)

Have a look what the booklet for
HunterLab(15.8243, 9.4369, 4.5135)
contains.

HunterLab(15.8716, 9.3471, 4.5687)	3
<i>Conversions</i>	4
<i>Details</i>	6
<i>Harmonies</i>	12
<i>Previews</i>	24
<i>Color Blindness Simulation</i>	28
<i>CSS Examples</i>	31

Color

**HunterLab(15.8716, 9.3471,
4.5687)**

Conversions

Conversions Part 1

Format	Color
Hex	452221
RGB	69, 34, 33
RGB Percent	27%, 13%, 13%
CMY	0.7294, 0.8667, 0.8706
CMYK	0.00, 0.51, 0.52, 0.73
HSL	2°, 35%, 20%
HSV	2°, 52%, 27%
XYZ	3.3008, 2.5191, 1.7511
YIQ	44.3510, 21.1810, 7.1090

Conversions

Conversions Part 2

Format	Color
R_{YB}	69, 34, 33
Decimal	4530721
CIE _{Lab}	18.01, 16.56, 8.15
CIE _{LCh}	18, 18.451, 26.200
Yxy	2.5192, 0.4360, 0.3327
Android (android.graphics.Color)	4282720801 (0xFF452221)
YUV	44.3510, -5.5960, 21.6172
Hunter-Lab	15.8716, 9.3471, 4.5687

Details

The HunterLab color **15.8716, 9.3471, 4.5687** is a dark color, and the websafe version is hex **663333**. A complement of this color would be **22.1066, -8.2586, -1.6229**, and the grayscale version is **15.9989, -0.8537, 0.8693**.

A 20% lighter version of the original color is **31.7013, 10.6455, 6.5891**, and **3.7208, 6.3721, 2.4043** is the 20% darker color. If you saturate the color by 10%, you get **14.6208, 11.5345, 5.2243**, and if you desaturate by 10%, it is **17.2732, 7.1652, 3.9089**.

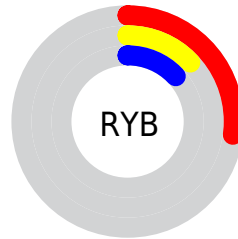
Distribution



Red (27%)

Green (13%)

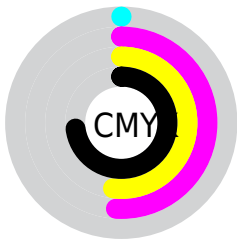
Blue (13%)



Red (27%)

Yellow (13%)

Blue (13%)

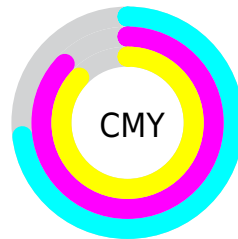


Cyan (0%)

Magenta (51%)

Yellow (52%)

Black (73%)



Cyan (73%)

Magenta (87%)

Yellow (87%)

Brightness & Saturation Gradients

These gradients show how the HunterLab color 15.8716, 9.3471, 4.5687 changes by changing the brightness by 10 percent. The first figure shows a shift by +10% for each color and the second figure -10%.

Similar to the brightness gradients but the following saturation gradients show a change of the HunterLab color 15.8716, 9.3471, 4.5687 by changing the saturation by 10% instead.

■ 15.8716, 9.3471,
4.5687

■ 15.8716, 9.3471,
4.5687

■ 110.5282, 12.0662,
13.8654

■ 9.4140, 8.4556,
4.0993

■ 31.7663, 10.6394,
6.6543

0.0000, INF, NaN

0.0000, NaN, NaN

■ 40.9861, 11.0954,
7.6686

0.0000, NaN, NaN

■ 50.9573, 11.4497,
8.6807

0.0000, NaN, NaN

0.0000, NaN, NaN

■ 61.6272, 11.7155,
9.6969

0.0000, NaN, NaN

■ 72.9527, 11.9027,
10.7212

0.0000, NaN, NaN

■ 84.8977, 12.0195,

0.0000, NaN, NaN

11.7563

97.4317, 12.0723,
12.8040

15.8716, 9.3471,
4.5687

15.8716, 9.3471,
4.5687

14.6208, 11.5345,
5.2243

17.2732, 7.1652,
3.9089

13.5432, 13.6536,
5.8477

18.8028, 5.0360,
3.2607

12.6622, 15.5913,
6.4012

20.4422, 2.9796,
2.6329

11.9696, 17.2549,
6.9095

22.1758, 1.0022,
2.0287

11.4320, 18.6404,
7.3707

23.9907, -0.8982,
1.4485

■ 25.8767, -2.7278,
0.8908

■ 27.8252, -4.4941,
0.3536

■ 29.8293, -6.2055,
-0.1656

■ 31.8831, -7.8694,
-0.6690

Harmonies

Analogous

The Analogous color harmony consists of three colors that are next to each other on the color wheel.



15.8720, 10.6270, 0.2093



15.8716, 9.3471, 4.5687



15.8720, 5.2149, 6.9837

Triad

The Triadic color harmony groups three colors that are evenly spaced from another and form a triangle on the color wheel.



15.8720, 9.3462, 4.5690



15.8720, -8.4451, 5.3583



15.8720, -1.5162, -12.1368

Complementary

The Complementary color scheme is a pair of colors which are on the opposite of each other on the color wheel.



15.8716, 9.3471, 4.5687



22.1066, -8.2586, -1.6229

Split Complementary

Split-complementary colors differ from the complementary color scheme. The scheme consists of three colors, the original color and two neighbors of the complement color.



15.8720, -6.1180, -9.4602



15.8716, 9.3471, 4.5687



15.8720, -9.7735, 1.4919

Square

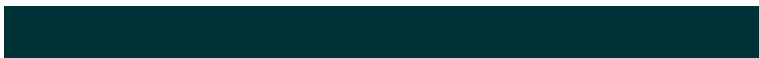
The Square scheme is like the rectangle color scheme, but the four colors are evenly spaced on the color wheel.



15.8720, 9.3462, 4.5690



15.8720, -5.0926, 7.3236



15.8720, -8.9804, -4.0279



15.8720, 3.8961, -10.4976

Rectangle

The Rectangle color scheme consists of four colors that form a rectangle on the color wheel.



15.8716, 9.3471, 4.5687



15.8720, 1.6516, 7.6826



15.8720, -8.9804, -4.0279



15.8720, -3.2014, -11.6941

Sweetspot

The Sweet Spot groups the original color and five complimentary colors.



15.8720, 9.3462, 4.5690



27.7956, 2.4366, 2.9827



16.6589, 14.2828, -9.1773



14.3623, 1.3848, 1.5879



64.8100, -3.4581, 3.5212



16.4960, -0.8802, 0.8963

Same Dimension

The Same Dimension uses a secret algorithm to generate beautiful new colors.



15.8720, 9.3462, 4.5690



18.5043, 15.9232, 7.0655



19.4819, 1.9969, 7.6607



12.3293, 0.1740, 0.9843



16.5474, 27.4046, 10.6762



40.5708, 68.6101, 26.2007

Inverse Universe

The Inverse Universe completely reimagines the original color for something new.



22.1066, -8.2586, -1.6229



28.2436, -12.1033, -2.7643



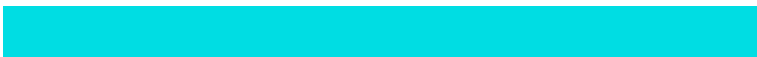
17.5174, -1.5207, -8.2888



12.9322, -1.4795, 0.4004



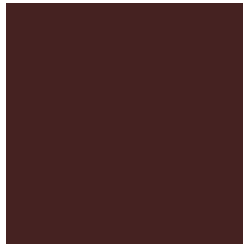
30.6598, -15.7008, -4.4286



75.5399, -38.5779, -11.1395

Previews

White Background



This preview shows how the HunterLab color 15.8716, 9.3471, 4.5687 looks on a white background.

Color Contrast Check

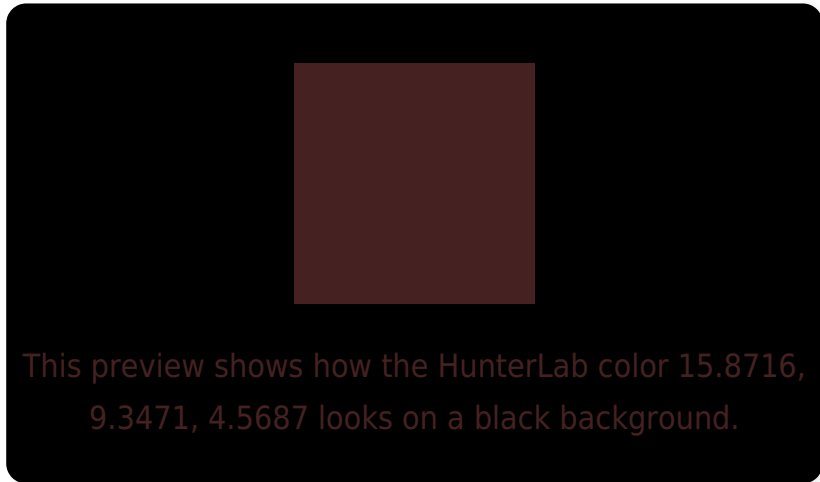
Large Text (above 18pt) WCAG AA ✓ Pass

Any Text WCAG AA ✓ Pass

Large Text (above 18pt) WCAG AAA ✓ Pass

Any Text WCAG AAA ✓ Pass

Black Background



Color Contrast Check

Large Text (above 18pt) WCAG AA × Fail

Any Text WCAG AA × Fail

Large Text (above 18pt) WCAG AAA × Fail

Any Text WCAG AAA × Fail

If you want to check with other color combinations, try the [Color Contrast Checker](#).

HunterLab 15.8716, 9.3471, 4.5687 Background



This preview shows how black text looks on a background with the HunterLab color 15.8716, 9.3471, 4.5687.



This preview shows how white text looks on a background with the HunterLab color 15.8716, 9.3471,

4.5687.

Color Blindness Simulation

Color vision deficiency is a very complex topic, and I could not describe the different causes any better than Wikipedia does, so if you want to learn more, you should check out their [article about color blindness](#).

Dichromacy



Original Color

15.8716, 9.3471, 4.5687

Protanopia

16.1897, -1.2032, 3.2394

Deuteranopia

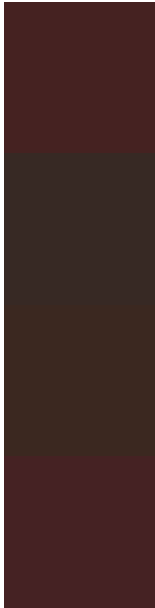
16.0735, 0.5163, 5.1317



Tritanopia

15.9268, 9.6139, 3.7690

Trichromacy



Original Color

15.8716, 9.3471, 4.5687

Protanomaly

15.8917, 2.3696, 3.6068

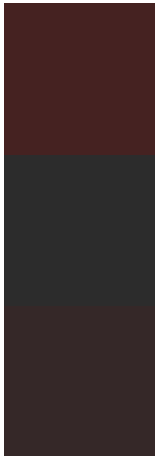
Deuteranomaly

15.9740, 3.5925, 4.8340

Tritanomaly

15.9079, 9.5226, 4.0426

Monochromacy



Original Color

15.8716, 9.3471, 4.5687

Achromatopsia

15.8704, -0.8468, 0.8623

Achromatomaly

15.5810, 2.6341, 2.0080

CSS Examples

Text

The CSS property to change the color of the text to HunterLab 15.8716, 9.3471, 4.5687 is called "color". The color property can be set on classes, ids or directly on the HTML element.

This example shows how text in the color `rgb(69, 34, 33)` looks like.

```
.text, #text, p{  
    color:rgb(69, 34, 33)  
}
```

If you want to add a text shadow in that color use the text-shadow property, you can generate a text shadow directly with our [CSS Text Shadow Generator](#).

Here you see how black text with a 4 pixel rgb(69, 34, 33) colored shadow looks like.

```
.shadow{ text-shadow: 4px 4px 2px rgb(69, 34, 33) }
```

Border

The CSS property to change the border of an element to HunterLab 15.8716, 9.3471, 4.5687 is called "border".

The border property can be set on classes, ids or directly on the HTML element.

This example shows the color as border, it can be applied via the CSS property "border" or "border-color".

```
.border, #border, table{ border:4px solid rgb(69, 34, 33) }
```


If only the border color should be changed use the property `border-color`.

```
.border{ border-color:rgb(69, 34, 33) }
```

If you want to add a box shadow in that color use:

Here you see how a box with a 4 pixel `rgb(69, 34, 33)` colored shadow looks like.

```
.boxshadow{ -moz-box-shadow:4px 4px 4px  
4px rgb(69, 34, 33); -webkit-box-  
shadow:4px 4px 4px 4px rgb(69, 34, 33);  
box-shadow:4px 4px 4px 4px rgb(69, 34, 33)  
}
```

Background

The CSS property to change the background color of an element to HunterLab 15.8716, 9.3471, 4.5687 is called "background". The background property can be set on classes, ids or directly on the HTML element.

```
.background, #background, body{  
background: rgb(69, 34, 33) }
```

If only the background color should be changed can be used:

```
.background{ background-color: rgb(69, 34,  
33) }
```

This example shows the color as background, it is applied via the CSS property "background".

To optimize and compress your CSS code, you can use our [online CSS compressor and optimizer](#) based on csstidy. If you want to create a linear or radial gradient as background or border, check our [CSS Gradient Generator](#).

Hey! You found this booklet
interesting? Support Converting
Colors with the new Membership
Option!

The pro membership hides all ads, plus gives you
double the colors in the color bucket, and more
awesome pro features!

[Learn more, Memberships starting at \\$2.50/m!](#)

**Follow me
on Twitter!**

@ConvertingColor