

Converting Colors

HunterLab(15.8803, 6.6749,
2.9605)

Have a look what the booklet for
HunterLab(15.8803, 6.6749, 2.9605)
contains.

HunterLab(15.8740, 6.6444, 3.0488)	3
<i>Conversions</i>	4
<i>Details</i>	6
<i>Harmonies</i>	12
<i>Previews</i>	24
<i>Color Blindness Simulation</i>	28
<i>CSS Examples</i>	31

Color

**HunterLab(15.8740, 6.6444,
3.0488)**

Conversions

Conversions Part 1

Format	Color
Hex	3F2526
RGB	63, 37, 38
RGB Percent	25%, 15%, 15%
CMY	0.7529, 0.8549, 0.8510
CMYK	0.00, 0.41, 0.40, 0.75
HSL	358°, 26%, 20%
HSV	358°, 41%, 25%
XYZ	3.0613, 2.5198, 2.1587
YIQ	44.8880, 15.1750, 5.8230

Conversions

Conversions Part 2

Format	Color
R_YB	63, 37, 38
Decimal	4138278
CIE Lab	18.01, 12.50, 4.50
CIE LCh	18, 13.283, 19.822
Yxy	2.5200, 0.3955, 0.3256
Android (android.graphics.Color)	4282328358 (0xFF3F2526)
YUV	44.8880, -3.3958, 15.8842
Hunter-Lab	15.8740, 6.6444, 3.0488

Details

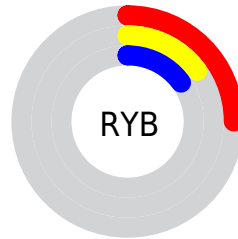
The HunterLab color **15.8740, 6.6444, 3.0488** is a dark color, and the websafe version is hex **333333**. A complement of this color would be **20.7272, -6.9056, -0.3860**, and the grayscale version is **16.1699, -0.8628, 0.8785**.

A 20% lighter version of the original color is **31.7866, 7.6089, 4.4554**, and **2.5403, 4.3503, 1.6415** is the 20% darker color. If you saturate the color by 10%, you get **14.5781, 8.6755, 3.5939**, and if you desaturate by 10%, it is **17.2883, 4.6491, 2.5426**.

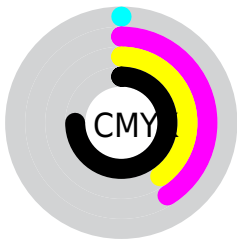
Distribution



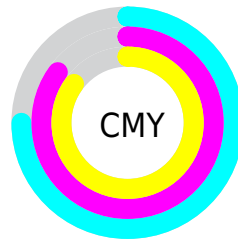
- Red (25%)
- Green (15%)
- Blue (15%)



- Red (25%)
- Yellow (15%)
- Blue (15%)



- Cyan (0%)
- Magenta (41%)
- Yellow (40%)
- Black (75%)



- Cyan (75%)
- Magenta (85%)
- Yellow (85%)

Brightness & Saturation Gradients

These gradients show how the HunterLab color 15.8740, 6.6444, 3.0488 changes by changing the brightness by 10 percent. The first figure shows a shift by +10% for each color and the second figure -10%.

Similar to the brightness gradients but the following saturation gradients show a change of the HunterLab color 15.8740, 6.6444, 3.0488 by changing the saturation by 10% instead.

■ 15.8740, 6.6444,
3.0488

■ 15.8740, 6.6444,
3.0488

■ 110.5327, 7.5586,
10.4322

■ 9.4160, 6.0111,
2.4955

■ 31.7693, 7.4572,
4.5639

0.0000, INF, NaN

0.0000, NaN, NaN

■ 40.9893, 7.6944,
5.3409

0.0000, NaN, NaN

■ 50.9608, 7.8419,
6.1365

0.0000, NaN, NaN

0.0000, NaN, NaN

■ 61.6310, 7.9114,
6.9525

0.0000, NaN, NaN

■ 72.9566, 7.9116,
7.7898

0.0000, NaN, NaN

■ 84.9018, 7.8493,

0.0000, NaN, NaN

8.6488

97.4360, 7.7302,
9.5297

15.8740, 6.6444,
3.0488

15.8740, 6.6444,
3.0488

14.5781, 8.6755,
3.5939

17.2883, 4.6491,
2.5426

13.4194, 10.7020,
4.1684

18.8026, 2.7127,
2.0766

12.4200, 12.6510,
4.7539

20.4031, 0.8415,
1.6496

11.6018, 14.4173,
5.3201

22.0780, -0.9651,
1.2585

10.9229, 16.0502,
5.8099

23.8178, -2.7120,
0.8993

■ 10.3056, 17.7002,
6.2605

■ 25.6149, -4.4055,
0.5679

■ 27.4627, -6.0523,
0.2608

■ 29.3561, -7.6591,
-0.0254

■ 31.2908, -9.2317,
-0.2936

Harmonies

Analogous

The Analogous color harmony consists of three colors that are next to each other on the color wheel.



15.8744, 7.0203, -0.4165



15.8740, 6.6444, 3.0488



15.8744, 4.1572, 5.3176

Triad

The Triadic color harmony groups three colors that are evenly spaced from another and form a triangle on the color wheel.



15.8744, 6.6436, 3.0491



15.8744, -6.0635, 4.7327



15.8744, -2.1210, -7.6332

Complementary

The Complementary color scheme is a pair of colors which are on the opposite of each other on the color wheel.



15.8740, 6.6444, 3.0488



20.7272, -6.9056, -0.3860

Split Complementary

Split-complementary colors differ from the complementary color scheme. The scheme consists of three colors, the original color and two neighbors of the complement color.



15.8744, -5.3006, -5.4315



15.8740, 6.6444, 3.0488



15.8744, -7.4305, 2.0461

Square

The Square scheme is like the rectangle color scheme, but the four colors are evenly spaced on the color wheel.



15.8744, 6.6436, 3.0491



15.8744, -3.2551, 6.1190



15.8744, -7.1651, -1.6838



15.8744, 1.7120, -7.1835

Rectangle

The Rectangle color scheme consists of four colors that form a rectangle on the color wheel.



15.8740, 6.6444, 3.0488



15.8744, 1.7573, 6.1098



15.8744, -7.1651, -1.6838



15.8744, -3.2952, -7.1618

Sweetspot

The Sweet Spot groups the original color and five complimentary colors.



15.8744, 6.6436, 3.0491



26.1843, 1.3902, 2.2052



16.4213, 9.5977, -6.6923



13.4080, 0.7399, 1.1372



62.6995, -3.3455, 3.4066



14.8260, -0.7911, 0.8055

Same Dimension

The Same Dimension uses a secret algorithm to generate beautiful new colors.



15.8744, 6.6436, 3.0491



18.7559, 11.4840, 4.7246



18.3359, 1.6898, 5.6680



10.8453, 0.1632, 0.7965



15.5118, 26.6157, 9.6266



39.4013, 67.5232, 25.0929

Inverse Universe

The Inverse Universe completely reimagines the original color for something new.



15.8744, 6.6436, 3.0491



18.7559, 11.4840, 4.7246



17.7377, -2.2877, -4.8291



10.8453, 0.1632, 0.7965



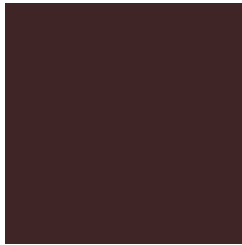
15.5118, 26.6157, 9.6266



39.4013, 67.5232, 25.0929

Previews

White Background



This preview shows how the HunterLab color 15.8740, 6.6444, 3.0488 looks on a white background.

Color Contrast Check

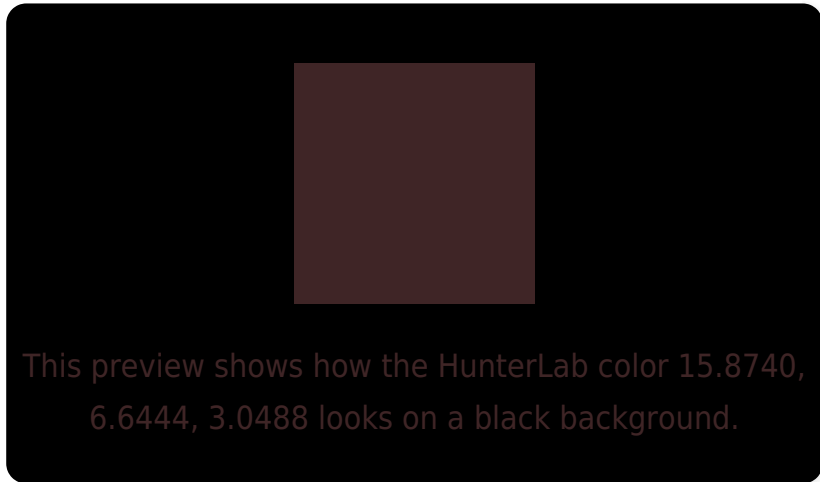
Large Text (above 18pt) WCAG AA ✓ Pass

Any Text WCAG AA ✓ Pass

Large Text (above 18pt) WCAG AAA ✓ Pass

Any Text WCAG AAA ✓ Pass

Black Background



Color Contrast Check

Large Text (above 18pt) WCAG AA × Fail

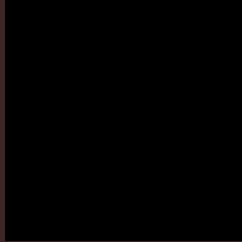
Any Text WCAG AA × Fail

Large Text (above 18pt) WCAG AAA × Fail

Any Text WCAG AAA × Fail

If you want to check with other color combinations, try the [Color Contrast Checker](#).

HunterLab 15.8740, 6.6444, 3.0488 Background



This preview shows how black text looks on a background with the HunterLab color 15.8740, 6.6444, 3.0488.

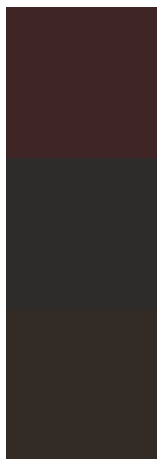


This preview shows how white text looks on a background with the HunterLab color 15.8740, 6.6444,

Color Blindness Simulation

Color vision deficiency is a very complex topic, and I could not describe the different causes any better than Wikipedia does, so if you want to learn more, you should check out their [article about color blindness](#).

Dichromacy



Original Color

15.8740, 6.6444, 3.0488

Protanopia

15.9668, -0.6045, 1.6940

Deuteranopia

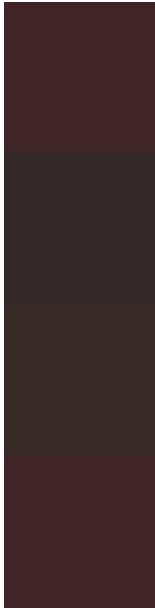
16.0160, 0.5373, 3.3991



Tritanopia

15.8946, 6.7475, 2.7523

Trichromacy



Original Color

15.8740, 6.6444, 3.0488

Protanomaly

15.7354, 2.0630, 1.8278

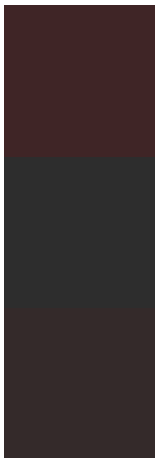
Deuteranomaly

15.9112, 2.4724, 3.3257

Tritanomaly

15.8946, 6.7475, 2.7523

Monochromacy



Original Color

15.8740, 6.6444, 3.0488

Achromatopsia

16.1991, -0.8643, 0.8801

Achromatomaly

15.9786, 1.7757, 1.7490

CSS Examples

Text

The CSS property to change the color of the text to HunterLab 15.8740, 6.6444, 3.0488 is called "color". The color property can be set on classes, ids or directly on the HTML element.

This example shows how text in the color `rgb(63, 37, 38)` looks like.

```
.text, #text, p{  
    color:rgb(63, 37, 38)  
}
```

If you want to add a text shadow in that color use the text-shadow property, you can generate a text shadow directly with our [CSS Text Shadow Generator](#).

Here you see how black text with a 4 pixel rgb(63, 37, 38) colored shadow looks like.

```
.shadow{ text-shadow: 4px 4px 2px rgb(63, 37, 38) }
```

Border

The CSS property to change the border of an element to HunterLab 15.8740, 6.6444, 3.0488 is called "border". The border property can be set on classes, ids or directly on the HTML element.

This example shows the color as border, it can be applied via the CSS property "border" or "border-color".

```
.border, #border, table{ border:4px solid rgb(63, 37, 38) }
```


If only the border color should be changed use the property `border-color`.

```
.border{ border-color:rgb(63, 37, 38) }
```

If you want to add a box shadow in that color use:

Here you see how a box with a 4 pixel `rgb(63, 37, 38)` colored shadow looks like.

```
.boxshadow{ -moz-box-shadow:4px 4px 4px  
4px rgb(63, 37, 38); -webkit-box-  
shadow:4px 4px 4px 4px rgb(63, 37, 38);  
box-shadow:4px 4px 4px 4px rgb(63, 37, 38)  
}
```

Background

The CSS property to change the background color of an element to HunterLab 15.8740, 6.6444, 3.0488 is called "background". The background property can be set on classes, ids or directly on the HTML element.

```
.background, #background, body{  
background: rgb(63, 37, 38) }
```

If only the background color should be changed can be used:

```
.background{ background-color: rgb(63, 37,  
38) }
```

This example shows the color as background, it is applied via the CSS property "background".

To optimize and compress your CSS code, you can use our [online CSS compressor and optimizer](#) based on csstidy. If you want to create a linear or radial gradient as background or border, check our [CSS Gradient Generator](#).

Hey! You found this booklet interesting? Support Converting Colors with the new Membership Option!

The pro membership hides all ads, plus gives you double the colors in the color bucket, and more awesome pro features!

[Learn more, Memberships starting at \\$2.50/m!](#)

**Follow me
on Twitter!**

@ConvertingColor