

Converting Colors

HunterLab(15.9363, 8.7819,
2.1398)

Have a look what the booklet for
HunterLab(15.9363, 8.7819, 2.1398)
contains.

HunterLab(15.8758, 8.7368, 2.1010)	3
<i>Conversions</i>	4
<i>Details</i>	6
<i>Harmonies</i>	12
<i>Previews</i>	24
<i>Color Blindness Simulation</i>	28
<i>CSS Examples</i>	31

Color

**HunterLab(15.8758, 8.7368,
2.1010)**

Conversions

Conversions Part 1

Format	Color
Hex	422329
RGB	66, 35, 41
RGB Percent	26%, 14%, 16%
CMY	0.7412, 0.8627, 0.8392
CMYK	0.00, 0.47, 0.38, 0.74
HSL	348°, 31%, 20%
HSV	348°, 47%, 26%
XYZ	3.2480, 2.5204, 2.4131
YIQ	44.9530, 16.5500, 8.4380

Conversions

Conversions Part 2

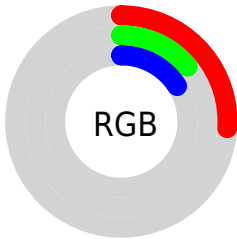
Format	Color
RYB	66, 35, 41
Decimal	4334377
CIELab	18.01, 15.66, 2.46
CIELCh	18, 15.848, 8.934
Yxy	2.5205, 0.3970, 0.3081
Android (android.graphics.Color)	4282524457 (0xFF422329)
YUV	44.9530, -1.9488, 18.4582
Hunter-Lab	15.8758, 8.7368, 2.1010

Details

The HunterLab color **15.8758, 8.7368, 2.1010** is a dark color, and the websafe version is hex **663333**. A complement of this color would be **21.4011, -8.6174, 1.1922**, and the grayscale version is **16.1864, -0.8637, 0.8794**.

A 20% lighter version of the original color is **31.7081, 9.9174, 3.2495**, and **3.4521, 5.9118, 2.2307** is the 20% darker color. If you saturate the color by 10%, you get **14.6061, 10.9209, 2.5206**, and if you desaturate by 10%, it is **17.2798, 6.5376, 1.7783**.

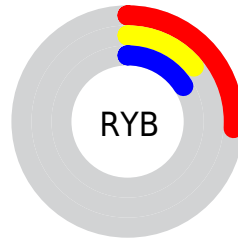
Distribution



Red (26%)

Green (14%)

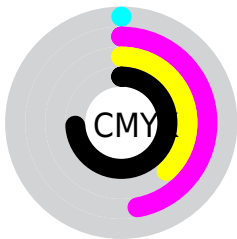
Blue (16%)



Red (26%)

Yellow (14%)

Blue (16%)

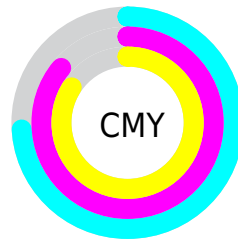


Cyan (0%)

Magenta (47%)

Yellow (38%)

Black (74%)



Cyan (74%)

Magenta (86%)

Yellow (84%)

Brightness & Saturation Gradients

These gradients show how the HunterLab color 15.8758, 8.7368, 2.1010 changes by changing the brightness by 10 percent. The first figure shows a shift by +10% for each color and the second figure -10%.

Similar to the brightness gradients but the following saturation gradients show a change of the HunterLab color 15.8758, 8.7368, 2.1010 by changing the saturation by 10% instead.

■ 15.8758, 8.7368,
2.1010

■ 15.8758, 8.7368,
2.1010

■ 110.5362, 11.0616,
8.4528

■ 9.4175, 7.8999,
1.5959

■ 31.7716, 9.9255,
3.3131

0.0000, INF, NaN

0.0000, NaN, NaN

■ 40.9918, 10.3338,
3.9626

0.0000, NaN, NaN

■ 50.9635, 10.6429,
4.6413

0.0000, NaN, NaN

■ 61.6338, 10.8656,
5.3489

0.0000, NaN, NaN

0.0000, NaN, NaN

■ 72.9596, 11.0118,
6.0846

0.0000, NaN, NaN

■ 84.9050, 11.0893,

0.0000, NaN, NaN

6.8476

97.4394, 11.1042,
7.6373

15.8758, 8.7368,
2.1010

15.8758, 8.7368,
2.1010

14.6061, 10.9209,
2.5206

17.2798, 6.5376,
1.7783

13.4911, 13.0247,
3.0382

18.7975, 4.3653,
1.5435

12.5537, 14.9471,
3.6451

20.4131, 2.2392,
1.3865

11.8087, 16.5778,
4.3117

22.1130, 0.1666,
1.2965

11.1107, 18.3171,
4.8760

23.8860, -1.8522,
1.2638

■ 10.8937, 18.9171,
5.0133

■ 25.7232, -3.8207,
1.2799

■ 27.6170, -5.7440,
1.3376

■ 29.5615, -7.6279,
1.4309

■ 31.5516, -9.4778,
1.5547

Harmonies

Analogous

The Analogous color harmony consists of three colors that are next to each other on the color wheel.



15.8762, 8.1538, -2.4223



15.8758, 8.7368, 2.1010



15.8762, 6.5346, 5.2496

Triad

The Triadic color harmony groups three colors that are evenly spaced from another and form a triangle on the color wheel.



15.8762, 8.7360, 2.1013



15.8762, -5.9731, 6.0645



15.8762, -3.8674, -9.0105

Complementary

The Complementary color scheme is a pair of colors which are on the opposite of each other on the color wheel.



15.8758, 8.7368, 2.1010



21.4011, -8.6174, 1.1922

Split Complementary

Split-complementary colors differ from the complementary color scheme. The scheme consists of three colors, the original color and two neighbors of the complement color.



15.8762, -7.0877, -5.2951



15.8758, 8.7368, 2.1010



15.8762, -8.2050, 3.5703

Square

The Square scheme is like the rectangle color scheme, but the four colors are evenly spaced on the color wheel.



15.8762, 8.7360, 2.1013



15.8762, -2.1820, 7.0766



15.8762, -8.5888, -0.4813



15.8762, 0.5316, -9.7316

Rectangle

The Rectangle color scheme consists of four colors that form a rectangle on the color wheel.



15.8758, 8.7368, 2.1010



15.8762, 3.9159, 6.4616



15.8762, -8.5888, -0.4813



15.8762, -5.1089, -8.0289

Sweetspot

The Sweet Spot groups the original color and five complimentary colors.



15.8762, 8.7360, 2.1013



27.4214, 2.3012, 1.7919



15.9687, 10.4619, -9.1143



13.8488, 1.3062, 0.9191



63.7533, -3.4017, 3.4638



15.6573, -0.8354, 0.8507

Same Dimension

The Same Dimension uses a secret algorithm to generate beautiful new colors.



15.8762, 8.7360, 2.1013



19.0189, 14.8124, 3.4147



17.6168, 4.2502, 5.5777



11.5854, 0.2572, 0.6929



16.0688, 27.8056, 8.1561



40.1109, 69.1337, 22.4877

Inverse Universe

The Inverse Universe completely reimagines the original color for something new.



15.8762, 8.7360, 2.1013



19.0189, 14.8124, 3.4147



19.0983, -4.2151, -4.3068



11.5854, 0.2572, 0.6929



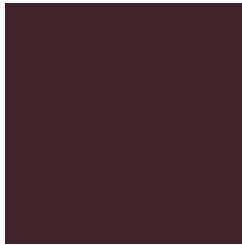
16.0688, 27.8056, 8.1561



40.1109, 69.1337, 22.4877

Previews

White Background



This preview shows how the HunterLab color 15.8758, 8.7368, 2.1010 looks on a white background.

Color Contrast Check

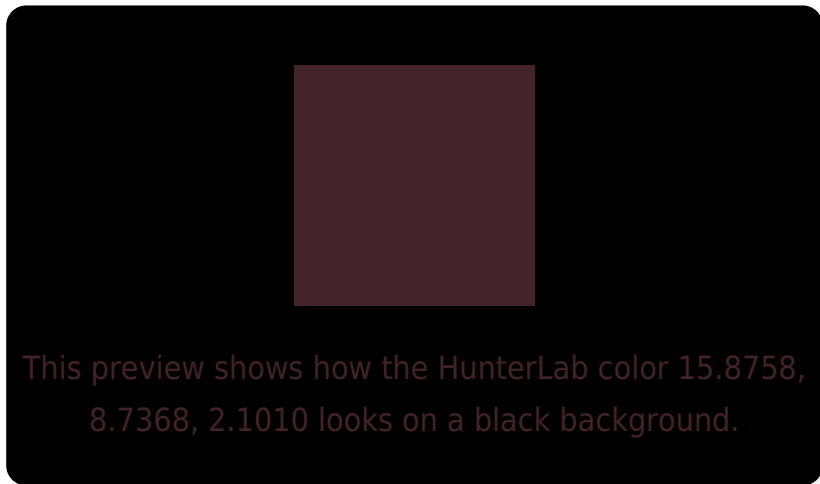
Large Text (above 18pt) WCAG AA ✓ Pass

Any Text WCAG AA ✓ Pass

Large Text (above 18pt) WCAG AAA ✓ Pass

Any Text WCAG AAA ✓ Pass

Black Background



Color Contrast Check

Large Text (above 18pt) WCAG AA × Fail

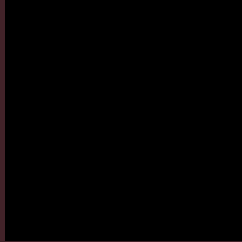
Any Text WCAG AA × Fail

Large Text (above 18pt) WCAG AAA × Fail

Any Text WCAG AAA × Fail

If you want to check with other color combinations, try the [Color Contrast Checker](#).

HunterLab 15.8758, 8.7368, 2.1010 Background



This preview shows how black text looks on a background with the HunterLab color 15.8758, 8.7368, 2.1010.



This preview shows how white text looks on a background with the HunterLab color 15.8758, 8.7368,

Color Blindness Simulation

Color vision deficiency is a very complex topic, and I could not describe the different causes any better than Wikipedia does, so if you want to learn more, you should check out their [article about color blindness](#).

Dichromacy



Original Color

15.8758, 8.7368, 2.1010

Protanopia

15.9891, -0.3390, 0.2617

Deuteranopia

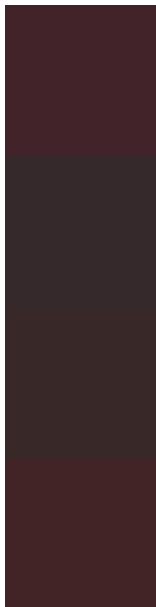
16.0772, 0.8665, 2.5186



Tritanopia

15.9998, 8.0074, 3.2040

Trichromacy



Original Color

15.8758, 8.7368, 2.1010

Protanomaly

15.8890, 2.7035, 0.9464

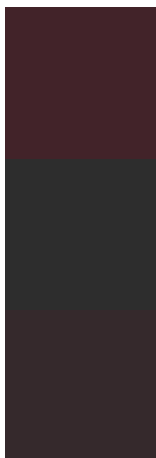
Deuteranomaly

15.8478, 3.4960, 2.3162

Tritanomaly

16.0203, 8.1080, 2.9098

Monochromacy



Original Color

15.8758, 8.7368, 2.1010

Achromatopsia

16.1991, -0.8643, 0.8801

Achromatomaly

15.8890, 2.7035, 0.9464

CSS Examples

Text

The CSS property to change the color of the text to HunterLab 15.8758, 8.7368, 2.1010 is called "color". The color property can be set on classes, ids or directly on the HTML element.

This example shows how text in the color `rgb(66, 35, 41)` looks like.

```
.text, #text, p{  
    color:rgb(66, 35, 41)  
}
```

If you want to add a text shadow in that color use the text-shadow property, you can generate a text shadow directly with our [CSS Text Shadow Generator](#).

Here you see how black text with a 4 pixel rgb(66, 35, 41) colored shadow looks like.

```
.shadow{ text-shadow: 4px 4px 2px rgb(66, 35, 41) }
```

Border

The CSS property to change the border of an element to HunterLab 15.8758, 8.7368, 2.1010 is called "border". The border property can be set on classes, ids or directly on the HTML element.

This example shows the color as border, it can be applied via the CSS property "border" or "border-color".

```
.border, #border, table{ border:4px solid rgb(66, 35, 41) }
```


If only the border color should be changed use the property `border-color`.

```
.border{ border-color:rgb(66, 35, 41) }
```

If you want to add a box shadow in that color use:

Here you see how a box with a 4 pixel `rgb(66, 35, 41)` colored shadow looks like.

```
.boxshadow{ -moz-box-shadow:4px 4px 4px  
4px rgb(66, 35, 41); -webkit-box-  
shadow:4px 4px 4px 4px rgb(66, 35, 41);  
box-shadow:4px 4px 4px 4px rgb(66, 35, 41)  
}
```

Background

The CSS property to change the background color of an element to HunterLab 15.8758, 8.7368, 2.1010 is called "background". The background property can be set on classes, ids or directly on the HTML element.

```
.background, #background, body{  
background: rgb(66, 35, 41) }
```

If only the background color should be changed can be used:

```
.background{ background-color: rgb(66, 35,  
41) }
```

This example shows the color as background, it is applied via the CSS property "background".

To optimize and compress your CSS code, you can use our [online CSS compressor and optimizer](#) based on csstidy. If you want to create a linear or radial gradient as background or border, check our [CSS Gradient Generator](#).

Hey! You found this booklet interesting? Support Converting Colors with the new Membership Option!

The pro membership hides all ads, plus gives you double the colors in the color bucket, and more awesome pro features!

[Learn more, Memberships starting at \\$2.50/m!](#)

**Follow me
on Twitter!**

@ConvertingColor