

Converting Colors

HunterLab(15.9923, 4.4193,
3.8719)

Have a look what the booklet for
HunterLab(15.9923, 4.4193, 3.8719)
contains.

HunterLab(15.9345, 4.6842, 3.6904)	3
<i>Conversions</i>	4
<i>Details</i>	6
<i>Harmonies</i>	12
<i>Previews</i>	24
<i>Color Blindness Simulation</i>	28
<i>CSS Examples</i>	31

Color

**HunterLab(15.9345, 4.6842,
3.6904)**

Conversions

Conversions Part 1

Format	Color
Hex	3C2724
RGB	60, 39, 36
RGB Percent	24%, 15%, 14%
CMY	0.7647, 0.8471, 0.8588
CMYK	0.00, 0.35, 0.40, 0.76
HSL	8°, 25%, 19%
HSV	8°, 40%, 24%
XYZ	2.9075, 2.5391, 2.0059
YIQ	44.9370, 13.4790, 3.5190

Conversions

Conversions Part 2

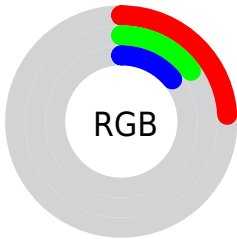
Format	Color
R _Y B	60, 39, 36
Decimal	3942180
CIE Lab	18.09, 9.41, 5.96
CIE LCh	18, 11.142, 32.350
Yxy	2.5392, 0.3901, 0.3407
Android (android.graphics.Color)	4282132260 (0xFF3C2724)
YUV	44.9370, -4.4059, 13.2103
Hunter-Lab	15.9345, 4.6842, 3.6904

Details

The HunterLab color **15.9345, 4.6842, 3.6904** is a dark color, and the websafe version is hex **333333**. A complement of this color would be **19.0459, -5.1554, -1.6624**, and the grayscale version is **16.1897, -0.8638, 0.8796**.

A 20% lighter version of the original color is **31.7930, 5.0128, 5.5252**, and **1.3914, 2.3828, 0.8991** is the 20% darker color. If you saturate the color by 10%, you get **14.7795, 6.2960, 4.2897**, and if you desaturate by 10%, it is **17.1697, 3.1324, 3.0705**.

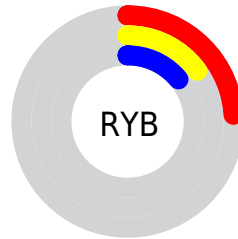
Distribution



Red (24%)

Green (15%)

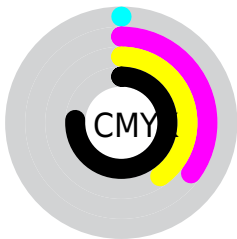
Blue (14%)



Red (24%)

Yellow (15%)

Blue (14%)

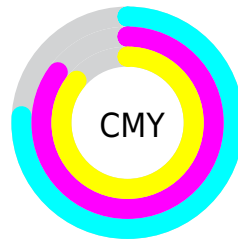


Cyan (0%)

Magenta (35%)

Yellow (40%)

Black (76%)



Cyan (76%)

Magenta (85%)

Yellow (86%)

Brightness & Saturation Gradients

These gradients show how the HunterLab color 15.9345, 4.6842, 3.6904 changes by changing the brightness by 10 percent. The first figure shows a shift by +10% for each color and the second figure -10%.

Similar to the brightness gradients but the following saturation gradients show a change of the HunterLab color 15.9345, 4.6842, 3.6904 by changing the saturation by 10% instead.

■ 15.9345, 4.6842,
3.6904

■ 15.9345, 4.6842,
3.6904

■ 110.6482, 4.1761,
11.8294

■ 9.4668, 4.2691,
3.1261

■ 31.8455, 5.1101,
5.4293

0.0000, INF, NaN

0.0000, NaN, NaN

■ 41.0723, 5.1742,
6.2998

0.0000, NaN, NaN

■ 51.0501, 5.1593,
7.1810

0.0000, NaN, NaN

0.0000, NaN, NaN

■ 61.7260, 5.0753,
8.0762

0.0000, NaN, NaN

■ 73.0572, 4.9296,
8.9877

0.0000, NaN, NaN

■ 85.0076, 4.7283,

0.0000, NaN, NaN

9.9166

97.5468, 4.4758,
10.8637

15.9345, 4.6842,
3.6904

15.9345, 4.6842,
3.6904

14.7795, 6.2960,
4.2897

17.1697, 3.1324,
3.0705

13.7155, 7.9566,
4.8551

18.4739, 1.6470,
2.4378

12.7563, 9.6385,
5.3692

19.8388, 0.2262,
1.7981

11.9161, 11.2966,
5.8097

21.2572, -1.1343,
1.1549

11.2045, 12.8464,
6.2173

22.7231, -2.4398,
0.5103

■ 10.5998, 14.2029,
6.7802

■ 24.2315, -3.6962,
-0.1348

■ 10.5998, 14.2030,
6.7802

■ 25.7782, -4.9093,
-0.7796

■ 27.3596, -6.0845,
-1.4242

■ 28.9728, -7.2266,
-2.0685

Harmonies

Analogous

The Analogous color harmony consists of three colors that are next to each other on the color wheel.



15.9349, 5.7700, 1.1054



15.9345, 4.6842, 3.6904



15.9349, 2.1041, 5.2276

Triad

The Triadic color harmony groups three colors that are evenly spaced from another and form a triangle on the color wheel.



15.9349, 4.6835, 3.6907



15.9349, -5.9404, 3.3502



15.9349, -0.5982, -6.1539

Complementary

The Complementary color scheme is a pair of colors which are on the opposite of each other on the color wheel.



15.9345, 4.6842, 3.6904



19.0459, -5.1554, -1.6624

Split Complementary

Split-complementary colors differ from the complementary color scheme. The scheme consists of three colors, the original color and two neighbors of the complement color.



15.9349, -3.6055, -5.2327



15.9345, 4.6842, 3.6904



15.9349, -6.5414, 0.6257

Square

The Square scheme is like the rectangle color scheme, but the four colors are evenly spaced on the color wheel.



15.9349, 4.6835, 3.6907



15.9349, -4.0097, 5.0600



15.9349, -5.7202, -2.5908



15.9349, 2.5745, -4.9078

Rectangle

The Rectangle color scheme consists of four colors that form a rectangle on the color wheel.



15.9345, 4.6842, 3.6904



15.9349, -0.0242, 5.6439



15.9349, -5.7202, -2.5908



15.9349, -1.6615, -6.0873

Sweetspot

The Sweet Spot groups the original color and five complimentary colors.



15.9349, 4.6835, 3.6907



25.6435, 0.7713, 2.5841



15.8741, 8.6299, -4.6233



13.5610, 0.4362, 1.3818



62.6995, -3.3455, 3.4066



14.8260, -0.7911, 0.8055

Same Dimension

The Same Dimension uses a secret algorithm to generate beautiful new colors.



15.9349, 4.6835, 3.6907



19.4104, 8.3513, 5.6693



18.5426, -0.1329, 6.0866



10.9254, 0.0070, 0.9257



16.2983, 23.8412, 10.4603



40.4034, 63.9860, 26.0166

Inverse Universe

The Inverse Universe completely reimagines the original color for something new.



19.0459, -5.1554, -1.6624



24.4483, -7.7321, -3.0325



16.1041, -0.5912, -5.8262



11.2998, -1.1617, 0.2849



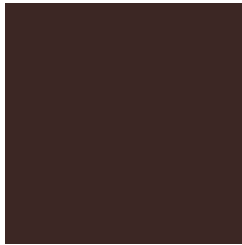
26.3294, -11.5344, -8.0101



66.2543, -28.4387, -21.4211

Previews

White Background



This preview shows how the HunterLab color 15.9345, 4.6842, 3.6904 looks on a white background.

Color Contrast Check

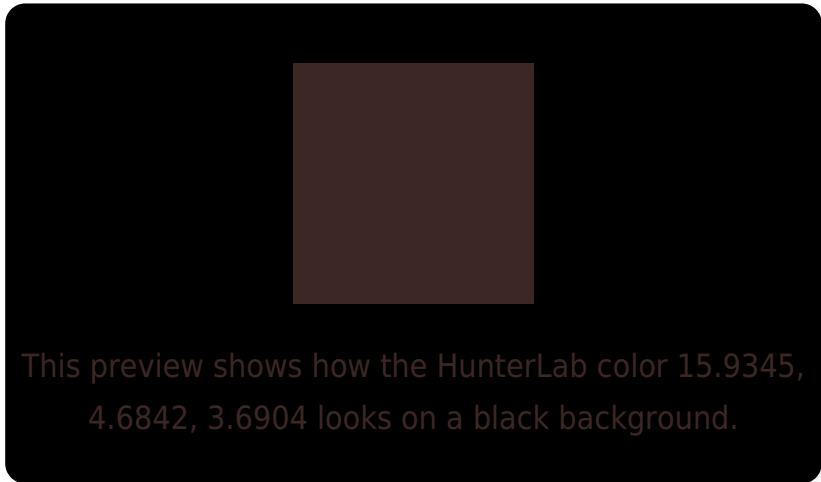
Large Text (above 18pt) WCAG AA ✓ Pass

Any Text WCAG AA ✓ Pass

Large Text (above 18pt) WCAG AAA ✓ Pass

Any Text WCAG AAA ✓ Pass

Black Background



Color Contrast Check

Large Text (above 18pt) WCAG AA × Fail

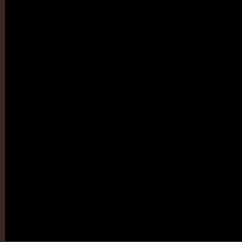
Any Text WCAG AA × Fail

Large Text (above 18pt) WCAG AAA × Fail

Any Text WCAG AAA × Fail

If you want to check with other color combinations, try the [Color Contrast Checker](#).

HunterLab 15.9345, 4.6842, 3.6904 Background



This preview shows how black text looks on a background with the HunterLab color 15.9345, 4.6842, 3.6904.

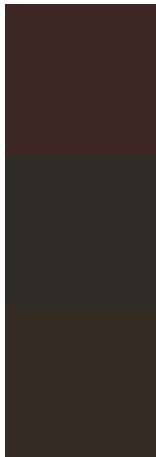


This preview shows how white text looks on a background with the HunterLab color 15.9345, 4.6842,

Color Blindness Simulation

Color vision deficiency is a very complex topic, and I could not describe the different causes any better than Wikipedia does, so if you want to learn more, you should check out their [article about color blindness](#).

Dichromacy



Original Color

15.9345, 4.6842, 3.6904

Protanopia

15.9756, -0.7035, 2.7081

Deuteranopia

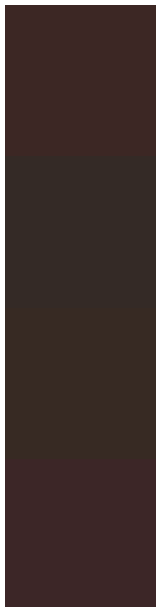
16.0598, 0.6094, 4.0362



Tritanopia

15.8334, 5.6256, 1.9995

Trichromacy



Original Color

15.9345, 4.6842, 3.6904

Protanomaly

15.8932, 1.3206, 2.9757

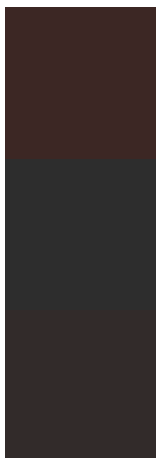
Deuteranomaly

16.0919, 1.8653, 4.0897

Tritanomaly

15.7904, 5.4071, 2.6174

Monochromacy



Original Color

15.9345, 4.6842, 3.6904

Achromatopsia

16.1991, -0.8643, 0.8801

Achromatomaly

16.0407, 0.8302, 1.8022

CSS Examples

Text

The CSS property to change the color of the text to HunterLab 15.9345, 4.6842, 3.6904 is called "color". The color property can be set on classes, ids or directly on the HTML element.

This example shows how text in the color `rgb(60, 39, 36)` looks like.

```
.text, #text, p{  
    color:rgb(60, 39, 36)  
}
```

If you want to add a text shadow in that color use the text-shadow property, you can generate a text shadow directly with our [CSS Text Shadow Generator](#).

Here you see how black text with a 4 pixel rgb(60, 39, 36) colored shadow looks like.

```
.shadow{ text-shadow: 4px 4px 2px rgb(60, 39, 36) }
```

Border

The CSS property to change the border of an element to HunterLab 15.9345, 4.6842, 3.6904 is called "border". The border property can be set on classes, ids or directly on the HTML element.

This example shows the color as border, it can be applied via the CSS property "border" or "border-color".

```
.border, #border, table{ border:4px solid rgb(60, 39, 36) }
```


If only the border color should be changed use the property `border-color`.

```
.border{ border-color:rgb(60, 39, 36) }
```

If you want to add a box shadow in that color use:

Here you see how a box with a 4 pixel `rgb(60, 39, 36)` colored shadow looks like.

```
.boxshadow{ -moz-box-shadow:4px 4px 4px  
4px rgb(60, 39, 36); -webkit-box-  
shadow:4px 4px 4px 4px rgb(60, 39, 36);  
box-shadow:4px 4px 4px 4px rgb(60, 39, 36)  
}
```

Background

The CSS property to change the background color of an element to HunterLab 15.9345, 4.6842, 3.6904 is called "background". The background property can be set on classes, ids or directly on the HTML element.

```
.background, #background, body{  
background: rgb(60, 39, 36) }
```

If only the background color should be changed can be used:

```
.background{ background-color: rgb(60, 39,  
36) }
```

This example shows the color as background, it is applied via the CSS property "background".

To optimize and compress your CSS code, you can use our [online CSS compressor and optimizer](#) based on csstidy. If you want to create a linear or radial gradient as background or border, check our [CSS Gradient Generator](#).

Hey! You found this booklet interesting? Support Converting Colors with the new Membership Option!

The pro membership hides all ads, plus gives you double the colors in the color bucket, and more awesome pro features!

[Learn more, Memberships starting at \\$2.50/m!](#)

**Follow me
on Twitter!**

@ConvertingColor