

Converting Colors

HunterLab(16.0471, 5.2699,
3.0238)

Have a look what the booklet for
HunterLab(16.0471, 5.2699, 3.0238)
contains.

HunterLab(16.0923, 5.2949, 2.9367)	3
<i>Conversions</i>	4
<i>Details</i>	6
<i>Harmonies</i>	12
<i>Previews</i>	24
<i>Color Blindness Simulation</i>	28
<i>CSS Examples</i>	31

Color

**HunterLab(16.0923, 5.2949,
2.9367)**

Conversions

Conversions Part 1

Format	Color
Hex	3D2727
RGB	61, 39, 39
RGB Percent	24%, 15%, 15%
CMY	0.7608, 0.8471, 0.8471
CMYK	0.00, 0.36, 0.36, 0.76
HSL	0°, 22%, 20%
HSV	0°, 36%, 24%
XYZ	3.0162, 2.5896, 2.2603
YIQ	45.5780, 13.1120, 4.6640

Conversions

Conversions Part 2

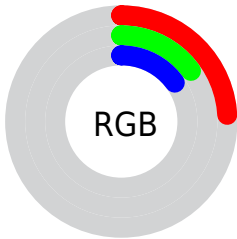
Format	Color
R_{YB}	61, 39, 39
Decimal	4007719
CIE Lab	18.32, 10.37, 4.20
CIE LCh	18, 11.190, 22.071
Yxy	2.5897, 0.3834, 0.3292
Android (android.graphics.Color)	4282197799 (0xFF3D2727)
YUV	45.5780, -3.2430, 13.5251
Hunter-Lab	16.0923, 5.2949, 2.9367

Details

The HunterLab color **16.0923, 5.2949, 2.9367** is a dark color, and the websafe version is hex **333333**. A complement of this color would be **20.2623, -5.9676, -0.5374**, and the grayscale version is **16.3973, -0.8749, 0.8909**.

A 20% lighter version of the original color is **31.9874, 5.8365, 4.2661**, and **2.2721, 3.8910, 1.4682** is the 20% darker color. If you saturate the color by 10%, you get **14.7771, 7.2225, 3.4883**, and if you desaturate by 10%, it is **17.5124, 3.4207, 2.4115**.

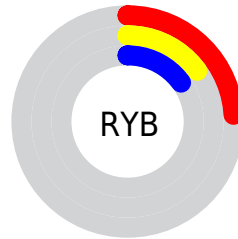
Distribution



Red (24%)

Green (15%)

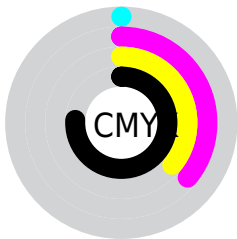
Blue (15%)



Red (24%)

Yellow (15%)

Blue (15%)

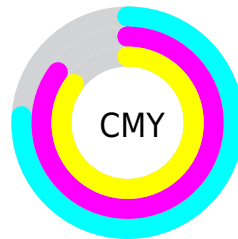


Cyan (0%)

Magenta (36%)

Yellow (36%)

Black (76%)



Cyan (76%)

Magenta (85%)

Yellow (85%)

Brightness & Saturation Gradients

These gradients show how the HunterLab color 16.0923, 5.2949, 2.9367 changes by changing the brightness by 10 percent. The first figure shows a shift by +10% for each color and the second figure -10%.

Similar to the brightness gradients but the following saturation gradients show a change of the HunterLab color 16.0923, 5.2949, 2.9367 by changing the saturation by 10% instead.

■ 16.0923, 5.2949,
2.9367

■ 16.0923, 5.2949,
2.9367

■ 110.9489, 5.2151,
10.1722

■ 9.5995, 4.8146,
2.3413

■ 32.0442, 5.8368,
4.4072

0.0000, INF, NaN

0.0000, NaN, NaN

■ 41.2885, 5.9529,
5.1658

0.0000, NaN, NaN

■ 51.2825, 5.9869,
5.9447

0.0000, NaN, NaN

0.0000, NaN, NaN

■ 61.9736, 5.9491,
6.7453

0.0000, NaN, NaN

■ 73.3190, 5.8475,
7.5683

0.0000, NaN, NaN

■ 85.2830, 5.6882,

0.0000, NaN, NaN

8.4138

97.8351, 5.4760,
9.2818

16.0923, 5.2949,
2.9367

16.0923, 5.2949,
2.9367

14.7771, 7.2225,
3.4883

17.5124, 3.4207,
2.4115

13.5837, 9.1781,
4.0576

19.0214, 1.6128,
1.9144

12.5324, 11.1093,
4.6290

20.6072, -0.1280,
1.4453

11.6448, 12.9332,
5.1761

22.2598, -1.8056,
1.0023

10.9331, 14.5543,
5.6680

23.9709, -3.4261,
0.5825

■ 10.2448, 16.2865,
6.1990

■ 25.7337, -4.9965,
0.1834

■ 9.9609, 17.0561,
6.4364

■ 27.5428, -6.5234,
-0.1979

■ 29.3936, -8.0132,
-0.5638

■ 31.2823, -9.4714,
-0.9163

Harmonies

Analogous

The Analogous color harmony consists of three colors that are next to each other on the color wheel.



16.0927, 5.7483, 0.0415



16.0923, 5.2949, 2.9367



16.0927, 3.1288, 4.8659

Triad

The Triadic color harmony groups three colors that are evenly spaced from another and form a triangle on the color wheel.



16.0927, 5.2942, 2.9370



16.0927, -5.4608, 4.0941



16.0927, -1.7054, -6.1233

Complementary

The Complementary color scheme is a pair of colors which are on the opposite of each other on the color wheel.



16.0923, 5.2949, 2.9367



20.2623, -5.9676, -0.5374

Split Complementary

Split-complementary colors differ from the complementary color scheme. The scheme consists of three colors, the original color and two neighbors of the complement color.



16.0927, -4.4937, -4.5009



16.0923, 5.2949, 2.9367



16.0927, -6.5479, 1.6680

Square

The Square scheme is like the rectangle color scheme, but the four colors are evenly spaced on the color wheel.



16.0927, 5.2942, 2.9370



16.0927, -3.1221, 5.4367



16.0927, -6.2082, -1.4998



16.0927, 1.5354, -5.5992

Rectangle

The Rectangle color scheme consists of four colors that form a rectangle on the color wheel.



16.0923, 5.2949, 2.9367



16.0927, 1.0926, 5.5352



16.0927, -6.2082, -1.4998



16.0927, -2.7228, -5.8012

Sweetspot

The Sweet Spot groups the original color and five complimentary colors.



16.0927, 5.2942, 2.9370



25.5655, 1.0470, 2.1973



16.6736, 8.2083, -5.2811



13.5023, 0.6037, 1.1775



62.6995, -3.3455, 3.4066



14.8260, -0.7911, 0.8055

Same Dimension

The Same Dimension uses a secret algorithm to generate beautiful new colors.



16.0927, 5.2942, 2.9370



19.3280, 9.0655, 4.4348



18.4927, 0.7581, 5.2543



10.8428, 0.1493, 0.8331



15.4866, 26.5192, 10.0071



39.3780, 67.4339, 25.4451

Inverse Universe

The Inverse Universe completely reimagines the original color for something new.



20.2623, -5.9676, -0.5374



25.9294, -8.9093, -1.1145



17.4628, -1.7383, -4.2595



11.3863, -1.3006, 0.3863



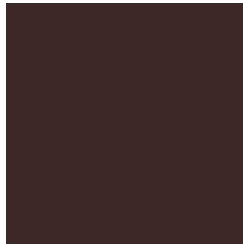
29.8013, -15.7980, -3.1457



75.7767, -40.1699, -7.9991

Previews

White Background



This preview shows how the HunterLab color 16.0923, 5.2949, 2.9367 looks on a white background.

Color Contrast Check

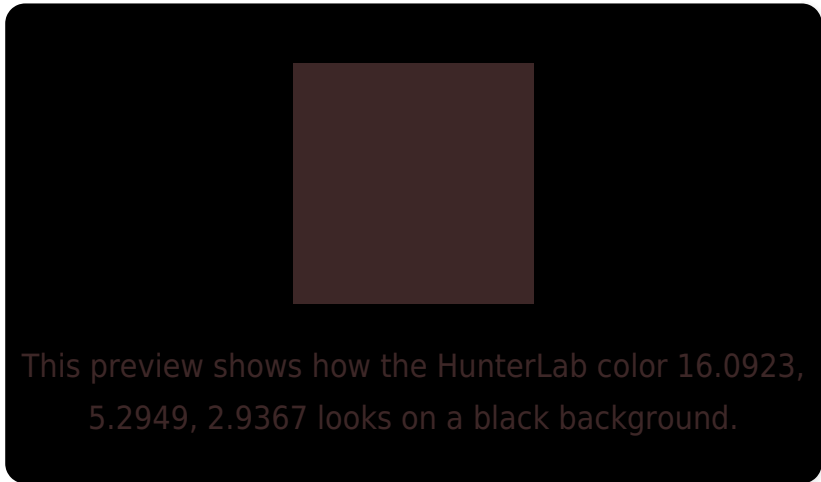
Large Text (above 18pt) WCAG AA ✓ Pass

Any Text WCAG AA ✓ Pass

Large Text (above 18pt) WCAG AAA ✓ Pass

Any Text WCAG AAA ✓ Pass

Black Background



Color Contrast Check

Large Text (above 18pt) WCAG AA × Fail

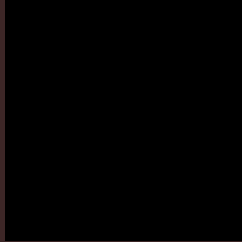
Any Text WCAG AA × Fail

Large Text (above 18pt) WCAG AAA × Fail

Any Text WCAG AAA × Fail

If you want to check with other color combinations, try the [Color Contrast Checker](#).

HunterLab 16.0923, 5.2949, 2.9367 Background



This preview shows how black text looks on a background with the HunterLab color 16.0923, 5.2949, 2.9367.

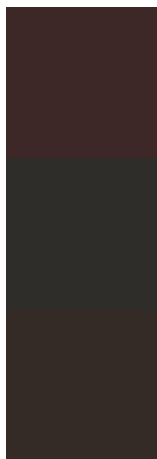


This preview shows how white text looks on a background with the HunterLab color 16.0923, 5.2949,

Color Blindness Simulation

Color vision deficiency is a very complex topic, and I could not describe the different causes any better than Wikipedia does, so if you want to learn more, you should check out their [article about color blindness](#).

Dichromacy



Original Color

16.0923, 5.2949, 2.9367

Protanopia

16.2735, -0.7432, 2.0340

Deuteranopia

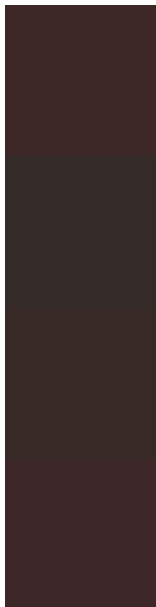
16.1176, 0.9201, 3.2022



Tritanopia

16.1564, 5.6211, 2.0154

Trichromacy



Original Color

16.0923, 5.2949, 2.9367

Protanomaly

16.1800, 1.2544, 2.3047

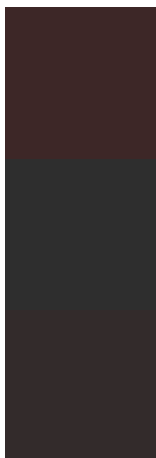
Deuteranomaly

16.1496, 2.1709, 3.2572

Tritanomaly

16.1345, 5.5099, 2.3296

Monochromacy



Original Color

16.0923, 5.2949, 2.9367

Achromatopsia

16.5290, -0.8819, 0.8981

Achromatomaly

16.1430, 1.2194, 1.5745

CSS Examples

Text

The CSS property to change the color of the text to HunterLab 16.0923, 5.2949, 2.9367 is called "color". The color property can be set on classes, ids or directly on the HTML element.

This example shows how text in the color `rgb(61, 39, 39)` looks like.

```
.text, #text, p{  
    color:rgb(61, 39, 39)  
}
```

If you want to add a text shadow in that color use the text-shadow property, you can generate a text shadow directly with our [CSS Text Shadow Generator](#).

Here you see how black text with a 4 pixel rgb(61, 39, 39) colored shadow looks like.

```
.shadow{ text-shadow: 4px 4px 2px rgb(61, 39, 39) }
```

Border

The CSS property to change the border of an element to HunterLab 16.0923, 5.2949, 2.9367 is called "border". The border property can be set on classes, ids or directly on the HTML element.

This example shows the color as border, it can be applied via the CSS property "border" or "border-color".

```
.border, #border, table{ border:4px solid rgb(61, 39, 39) }
```


If only the border color should be changed use the property `border-color`.

```
.border{ border-color:rgb(61, 39, 39) }
```

If you want to add a box shadow in that color use:

Here you see how a box with a 4 pixel `rgb(61, 39, 39)` colored shadow looks like.

```
.boxshadow{ -moz-box-shadow:4px 4px 4px  
4px rgb(61, 39, 39); -webkit-box-  
shadow:4px 4px 4px 4px rgb(61, 39, 39);  
box-shadow:4px 4px 4px 4px rgb(61, 39, 39)  
}
```

Background

The CSS property to change the background color of an element to HunterLab 16.0923, 5.2949, 2.9367 is called "background". The background property can be set on classes, ids or directly on the HTML element.

```
.background, #background, body{  
background: rgb(61, 39, 39) }
```

If only the background color should be changed can be used:

```
.background{ background-color: rgb(61, 39,  
39) }
```

This example shows the color as background, it is applied via the CSS property "background".

To optimize and compress your CSS code, you can use our [online CSS compressor and optimizer](#) based on csstidy. If you want to create a linear or radial gradient as background or border, check our [CSS Gradient Generator](#).

Hey! You found this booklet interesting? Support Converting Colors with the new Membership Option!

The pro membership hides all ads, plus gives you double the colors in the color bucket, and more awesome pro features!

[Learn more, Memberships starting at \\$2.50/m!](#)

**Follow me
on Twitter!**

@ConvertingColor