

# Converting Colors

HunterLab(16.1143, 8.6237,  
1.5021)

Have a look what the booklet for  
HunterLab(16.1143, 8.6237, 1.5021)  
contains.

<b>HunterLab(16.1072, 8.5347, 1.6618)</b> .....	3
<i><b>Conversions</b></i> .....	4
<i><b>Details</b></i> .....	6
<i><b>Harmonies</b></i> .....	12
<i><b>Previews</b></i> .....	24
<i><b>Color Blindness Simulation</b></i> .....	28
<i><b>CSS Examples</b></i> .....	31

# Color

**HunterLab(16.1072, 8.5347,  
1.6618)**

# Conversions

## Conversions Part 1

Format	Color
Hex	42242B
RGB	66, 36, 43
RGB Percent	26%, 14%, 17%
CMY	0.7412, 0.8588, 0.8314
CMYK	0.00, 0.45, 0.35, 0.74
HSL	346°, 29%, 20%
HSV	346°, 45%, 26%
XYZ	3.3137, 2.5944, 2.6116
YIQ	45.7680, 15.6330, 8.5370

# Conversions

## Conversions Part 2

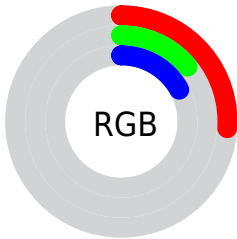
Format	Color
<a href="#">RYB</a>	<a href="#">66, 36, 43</a>
Decimal	<a href="#">4334635</a>
CIELab	<a href="#">18.34, 15.32, 1.53</a>
CIELCh	<a href="#">18, 15.397, 5.702</a>
Yxy	<a href="#">2.5945, 0.3889, 0.3045</a>
Android (android.graphics.Color)	<a href="#">4282524715 (0xFF42242B)</a>
YUV	<a href="#">45.7680, -1.3646, 17.7435</a>
Hunter-Lab	<a href="#">16.1072, 8.5347, 1.6618</a>

# Details

The HunterLab color **16.1072, 8.5347, 1.6618** is a dark color, and the websafe version is hex **663333**. A complement of this color would be **21.4181, -8.6014, 1.5924**, and the grayscale version is **16.4535, -0.8779, 0.8939**.

A 20% lighter version of the original color is **31.9911, 9.7115, 2.7718**, and **3.7208, 6.3721, 2.4043** is the 20% darker color. If you saturate the color by 10%, you get **14.8201, 10.7392, 2.0044**, and if you desaturate by 10%, it is **17.5246, 6.3163, 1.4264**.

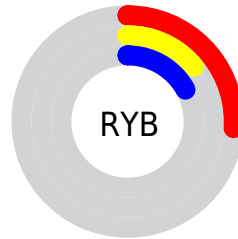
# Distribution



Red (26%)

Green (14%)

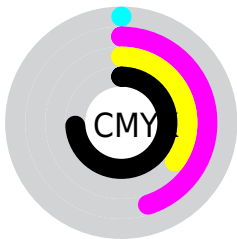
Blue (17%)



Red (26%)

Yellow (14%)

Blue (17%)

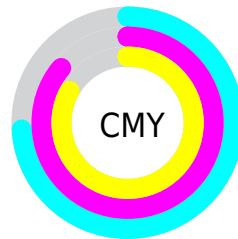


Cyan (0%)

Magenta (45%)

Yellow (35%)

Black (74%)



Cyan (74%)

Magenta (86%)

Yellow (83%)

# Brightness & Saturation Gradients

These gradients show how the HunterLab color 16.1072, 8.5347, 1.6618 changes by changing the brightness by 10 percent. The first figure shows a shift by +10% for each color and the second figure -10%.

Similar to the brightness gradients but the following saturation gradients show a change of the HunterLab color 16.1072, 8.5347, 1.6618 by changing the saturation by 10% instead.



■ 16.1072, 8.5347,  
1.6618

■ 16.1072, 8.5347,  
1.6618

■ 110.9773, 10.6853,  
7.5635

■ 9.6121, 7.7247,  
1.1865

■ 32.0629, 9.6753,  
2.7427

0.0000, INF, NaN

0.0000, NaN, NaN

■ 41.3089, 10.0622,  
3.3366

0.0000, NaN, NaN

■ 51.3044, 10.3513,  
3.9644

0.0000, NaN, NaN

0.0000, NaN, NaN

■ 61.9970, 10.5553,  
4.6245

0.0000, NaN, NaN

■ 73.3437, 10.6838,  
5.3157

0.0000, NaN, NaN

■ 85.3090, 10.7444,

0.0000, NaN, NaN

6.0366

97.8623, 10.7433,  
6.7862

16.1072, 8.5347,  
1.6618

16.1072, 8.5347,  
1.6618

14.8201, 10.7392,  
2.0044

17.5246, 6.3163,  
1.4264

13.6834, 12.8683,  
2.4606

19.0525, 4.1237,  
1.2854

12.7194, 14.8254,  
3.0288

20.6755, 1.9749,  
1.2262

11.9482, 16.4878,  
3.6912

22.3807, -0.1232,  
1.2369

11.2522, 18.1607,  
4.3037

24.1574, -2.1703,  
1.3066

■ 10.9265, 19.0381,  
4.5325

■ 25.9968, -4.1698,  
1.4264

■ 27.8917, -6.1264,  
1.5886

■ 29.8364, -8.0456,  
1.7872

■ 31.8260, -9.9328,  
2.0170

# Harmonies

## Analogous

The Analogous color harmony consists of three colors that are next to each other on the color wheel.



16.1076, 7.6722, -2.8312



16.1072, 8.5347, 1.6618



16.1076, 6.6662, 4.9288

# Triad

The Triadic color harmony groups three colors that are evenly spaced from another and form a triangle on the color wheel.



16.1076, 8.5339, 1.6621



16.1076, -5.5409, 6.1712



16.1076, -4.2213, -8.4077

# Complementary

The Complementary color scheme is a pair of colors which are on the opposite of each other on the color wheel.



16.1072, 8.5347, 1.6618



21.4181, -8.6014, 1.5924

# Split Complementary

Split-complementary colors differ from the complementary color scheme. The scheme consists of three colors, the original color and two neighbors of the complement color.



16.1076, -7.2170, -4.6121



16.1072, 8.5347, 1.6618



16.1076, -7.9192, 3.8704

# Square

The Square scheme is like the rectangle color scheme, but the four colors are evenly spaced on the color wheel.



16.1076, 8.5339, 1.6621



16.1076, -1.6989, 7.0403



16.1076, -8.4980, 0.0498



16.1076, -0.0043, -9.4643



# Rectangle

The Rectangle color scheme consists of four colors that form a rectangle on the color wheel.



16.1072, 8.5347, 1.6618



16.1076, 4.2323, 6.2419



16.1076, -8.4980, 0.0498



16.1076, -5.3896, -7.3677

# Sweetspot

The Sweet Spot groups the original color and five complimentary colors.



16.1076, 8.5339, 1.6621



27.4339, 2.3678, 1.6139



16.0781, 9.8100, -8.9281



13.8556, 1.3422, 0.8227



63.7533, -3.4017, 3.4638



15.6573, -0.8354, 0.8507



# Same Dimension

The Same Dimension uses a secret algorithm to generate beautiful new colors.



16.1076, 8.5339, 1.6621



19.2233, 14.7120, 2.7470



17.5702, 4.4639, 5.2721



11.5884, 0.2732, 0.6507



16.1127, 27.9677, 7.5110



40.2025, 69.4725, 21.1363



# Inverse Universe

The Inverse Universe completely reimagines the original color for something new.



16.1076, 8.5339, 1.6621



19.2233, 14.7120, 2.7470



19.4798, -4.5463, -3.7641



11.5884, 0.2732, 0.6507



16.1127, 27.9677, 7.5110

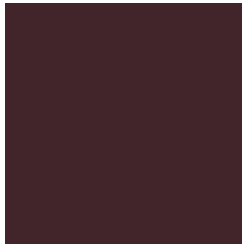


40.2025, 69.4725, 21.1363



# Previews

## White Background



This preview shows how the HunterLab color 16.1072, 8.5347, 1.6618 looks on a white background.

## Color Contrast Check

Large Text (above 18pt) WCAG AA ✓ Pass

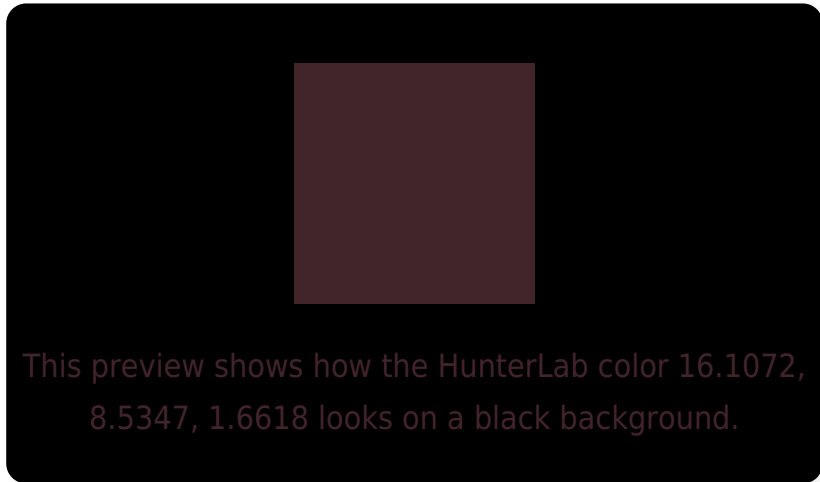
Any Text WCAG AA ✓ Pass

Large Text (above 18pt) WCAG AAA ✓ Pass

Any Text WCAG AAA ✓ Pass



# Black Background



## Color Contrast Check

Large Text (above 18pt) WCAG AA × Fail

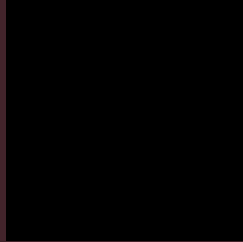
Any Text WCAG AA × Fail

Large Text (above 18pt) WCAG AAA × Fail

Any Text WCAG AAA × Fail

If you want to check with other color combinations, try the [Color Contrast Checker](#).

# HunterLab 16.1072, 8.5347, 1.6618 Background



This preview shows how black text looks on a background with the HunterLab color 16.1072, 8.5347, 1.6618.



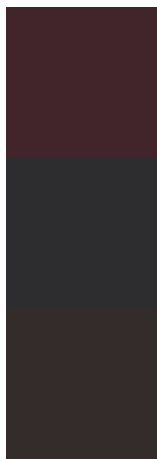
This preview shows how white text looks on a background with the HunterLab color 16.1072, 8.5347,



# Color Blindness Simulation

Color vision deficiency is a very complex topic, and I could not describe the different causes any better than Wikipedia does, so if you want to learn more, you should check out their [article about color blindness](#).

## Dichromacy



### Original Color

16.1072, 8.5347, 1.6618

### Protanopia

16.2729, -0.4614, -0.1691

### Deuteranopia

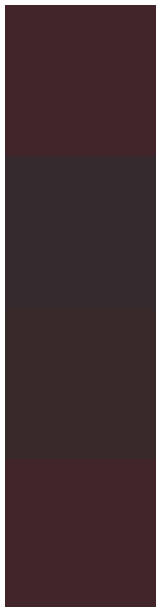
16.3473, 0.6977, 2.1407



## Tritanopia

16.2107, 7.6880, 3.1032

# Trichromacy



## Original Color

16.1072, 8.5347, 1.6618

## Protanomaly

16.1557, 2.5458, 0.5138

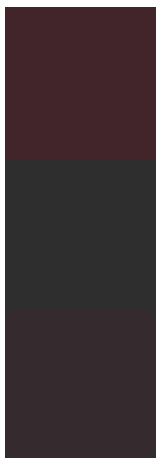
## Deuteranomaly

16.1053, 3.3118, 1.9179

## Tritanomaly

16.2314, 7.7905, 2.8052

# Monochromacy



## Original Color

16.1072, 8.5347, 1.6618

## Achromatopsia

16.5290, -0.8819, 0.8981

## Achromatomaly

16.1316, 2.4185, 0.8579

# CSS Examples

## Text

The CSS property to change the color of the text to HunterLab 16.1072, 8.5347, 1.6618 is called "color". The color property can be set on classes, ids or directly on the HTML element.

This example shows how text in the color `rgb(66, 36, 43)` looks like.

```
.text, #text, p{  
    color:rgb(66, 36, 43)  
}
```

If you want to add a text shadow in that color use the text-shadow property, you can generate a text shadow directly with our [CSS Text Shadow Generator](#).

Here you see how black text with a 4 pixel rgb(66, 36, 43) colored shadow looks like.

```
.shadow{ text-shadow: 4px 4px 2px rgb(66, 36, 43) }
```

## Border

The CSS property to change the border of an element to HunterLab 16.1072, 8.5347, 1.6618 is called "border". The border property can be set on classes, ids or directly on the HTML element.

This example shows the color as border, it can be applied via the CSS property "border" or "border-color".

```
.border, #border, table{ border:4px solid rgb(66, 36, 43) }
```



If only the border color should be changed use the property `border-color`.

```
.border{ border-color:rgb(66, 36, 43) }
```

If you want to add a box shadow in that color use:

Here you see how a box with a 4 pixel `rgb(66, 36, 43)` colored shadow looks like.

```
.boxshadow{ -moz-box-shadow:4px 4px 4px  
4px rgb(66, 36, 43); -webkit-box-  
shadow:4px 4px 4px 4px rgb(66, 36, 43);  
box-shadow:4px 4px 4px 4px rgb(66, 36, 43)  
}
```

# Background

The CSS property to change the background color of an element to HunterLab 16.1072, 8.5347, 1.6618 is called "background". The background property can be set on classes, ids or directly on the HTML element.

```
.background, #background, body{  
background: rgb(66, 36, 43) }
```

If only the background color should be changed can be used:

```
.background{ background-color: rgb(66, 36,  
43) }
```

This example shows the color as background, it is applied via the CSS property "background".

To optimize and compress your CSS code, you can use our [online CSS compressor and optimizer](#) based on csstidy. If you want to create a linear or radial gradient as background or border, check our [CSS Gradient Generator](#).

Hey! You found this booklet interesting? Support Converting Colors with the new Membership Option!

The pro membership hides all ads, plus gives you double the colors in the color bucket, and more awesome pro features!

**[Learn more, Memberships starting at \\$2.50/m!](#)**

**Follow me  
on Twitter!**

@ConvertingColor