

Converting Colors

HunterLab(16.2106, 6.4131,
3.2116)

Have a look what the booklet for
HunterLab(16.2106, 6.4131, 3.2116)
contains.

HunterLab(16.1947, 6.6397, 3.0681)	3
<i>Conversions</i>	4
<i>Details</i>	6
<i>Harmonies</i>	12
<i>Previews</i>	24
<i>Color Blindness Simulation</i>	28
<i>CSS Examples</i>	31

Color

**HunterLab(16.1947, 6.6397,
3.0681)**

Conversions

Conversions Part 1

Format	Color
Hex	402627
RGB	64, 38, 39
RGB Percent	25%, 15%, 15%
CMY	0.7490, 0.8510, 0.8471
CMYK	0.00, 0.41, 0.39, 0.75
HSL	358°, 25%, 20%
HSV	358°, 41%, 25%
XYZ	3.1737, 2.6227, 2.2584
YIQ	45.8880, 15.1750, 5.8230

Conversions

Conversions Part 2

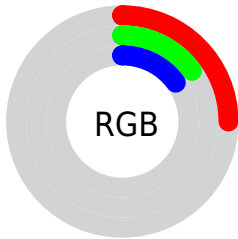
Format	Color
RYB	64, 38, 39
Decimal	4204071
CIELab	18.47, 12.45, 4.47
CIElCh	18, 13.230, 19.753
Yxy	2.6228, 0.3940, 0.3256
Android (android.graphics.Color)	4282394151 (0xFF402627)
YUV	45.8880, -3.3958, 15.8842
Hunter-Lab	16.1947, 6.6397, 3.0681

Details

The HunterLab color **16.1947, 6.6397, 3.0681** is a dark color, and the websafe version is hex **333333**. A complement of this color would be **21.0660, -6.9544, -0.3770**, and the grayscale version is **16.4996, -0.8804, 0.8965**.

A 20% lighter version of the original color is **32.1517, 7.6000, 4.4776**, and **3.1868, 5.4575, 2.0592** is the 20% darker color. If you saturate the color by 10%, you get **14.8682, 8.7072, 3.6214**, and if you desaturate by 10%, it is **17.6411, 4.6103, 2.5547**.

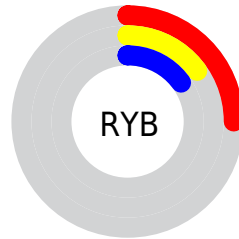
Distribution



Red (25%)

Green (15%)

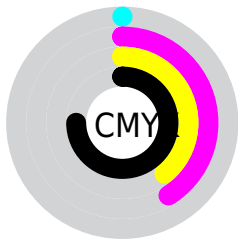
Blue (15%)



Red (25%)

Yellow (15%)

Blue (15%)

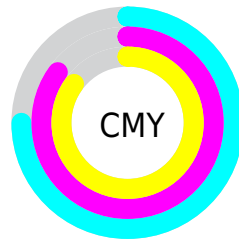


Cyan (0%)

Magenta (41%)

Yellow (39%)

Black (75%)



Cyan (75%)

Magenta (85%)

Yellow (85%)

Brightness & Saturation Gradients

These gradients show how the HunterLab color 16.1947, 6.6397, 3.0681 changes by changing the brightness by 10 percent. The first figure shows a shift by +10% for each color and the second figure -10%.

Similar to the brightness gradients but the following saturation gradients show a change of the HunterLab color 16.1947, 6.6397, 3.0681 by changing the saturation by 10% instead.

16.1947, 6.6397,
3.0681

16.1947, 6.6397,
3.0681

111.1437, 7.4997,
10.4418

9.6858, 6.0178,
2.4473

32.1730, 7.4353,
4.5790

0.0000, INF, NaN

0.0000, NaN, NaN

41.4286, 7.6656,
5.3546

0.0000, NaN, NaN

51.4331, 7.8070,
6.1491

0.0000, NaN, NaN

0.0000, NaN, NaN

62.1340, 7.8709,
6.9643

0.0000, NaN, NaN

73.4887, 7.8660,
7.8010

0.0000, NaN, NaN

85.4614, 7.7990,

0.0000, NaN, NaN

8.6594

98.0219, 7.6755,
9.5397

16.1947, 6.6397,
3.0681

16.1947, 6.6397,
3.0681

14.8682, 8.7072,
3.6214

17.6411, 4.6103,
2.5547

13.6807, 10.7729,
4.2054

19.1888, 2.6418,
2.0825

12.6550, 12.7636,
4.8018

20.8237, 0.7401,
1.6499

11.8133, 14.5731,
5.3801

22.5341, -1.0960,
1.2538

11.1279, 16.2099,
5.8817

24.3101, -2.8714,
0.8899

■ 10.4660, 17.9748,
6.3639

■ 26.1441, -4.5927,
0.5542

■ 28.0296, -6.2669,
0.2430

■ 29.9613, -7.9006,
-0.0470

■ 31.9349, -9.4998,
-0.3188

Harmonies

Analogous

The Analogous color harmony consists of three colors that are next to each other on the color wheel.



16.1951, 7.0101, -0.4106



16.1947, 6.6397, 3.0681



16.1951, 4.1558, 5.3570

Triad

The Triadic color harmony groups three colors that are evenly spaced from another and form a triangle on the color wheel.



16.1951, 6.6389, 3.0684



16.1951, -6.0956, 4.7753



16.1951, -2.1503, -7.6054

Complementary

The Complementary color scheme is a pair of colors which are on the opposite of each other on the color wheel.



16.1947, 6.6397, 3.0681



21.0660, -6.9544, -0.3770

Split Complementary

Split-complementary colors differ from the complementary color scheme. The scheme consists of three colors, the original color and two neighbors of the complement color.



16.1951, -5.3400, -5.4053



16.1947, 6.6397, 3.0681



16.1951, -7.4740, 2.0752

Square

The Square scheme is like the rectangle color scheme, but the four colors are evenly spaced on the color wheel.



16.1951, 6.6389, 3.0684



16.1951, -3.2719, 6.1727



16.1951, -7.2108, -1.6604



16.1951, 1.6913, -7.1638

Rectangle

The Rectangle color scheme consists of four colors that form a rectangle on the color wheel.



16.1947, 6.6397, 3.0681



16.1951, 1.7545, 6.1598



16.1951, -7.2108, -1.6604



16.1951, -3.3279, -7.1336

Sweetspot

The Sweet Spot groups the original color and five complimentary colors.



16.1951, 6.6389, 3.0684



27.0122, 1.4486, 2.2791



16.7434, 9.6046, -6.6906



14.1376, 0.8067, 1.2066



63.7533, -3.4017, 3.4638



15.6573, -0.8354, 0.8507

Same Dimension

The Same Dimension uses a secret algorithm to generate beautiful new colors.



16.1951, 6.6389, 3.0684



19.4912, 11.6302, 4.8147



18.6699, 1.6710, 5.7097



11.5740, 0.1955, 0.8560



15.9501, 27.3661, 9.9102



39.9126, 68.3989, 25.4238

Inverse Universe

The Inverse Universe completely reimagines the original color for something new.



16.1951, 6.6389, 3.0684



19.4912, 11.6302, 4.8147



18.0698, -2.3204, -4.8212



11.5740, 0.1955, 0.8560



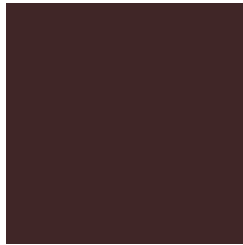
15.9501, 27.3661, 9.9102



39.9126, 68.3989, 25.4238

Previews

White Background



This preview shows how the HunterLab color 16.1947, 6.6397, 3.0681 looks on a white background.

Color Contrast Check

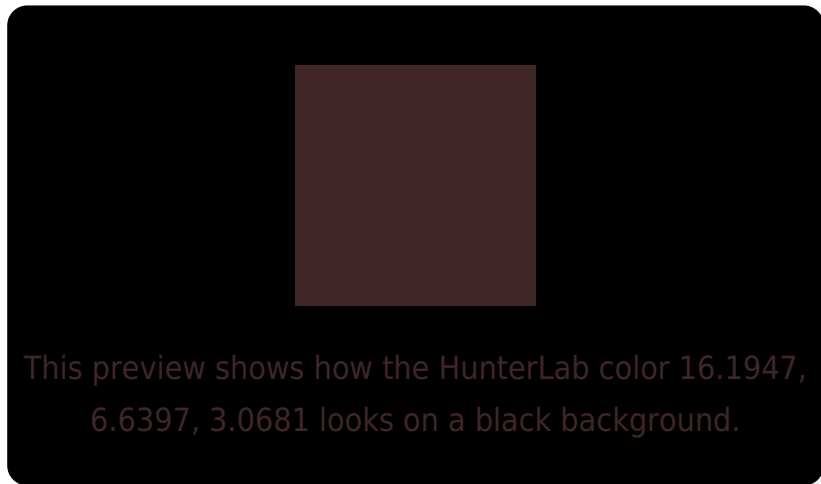
Large Text (above 18pt) WCAG AA ✓ Pass

Any Text WCAG AA ✓ Pass

Large Text (above 18pt) WCAG AAA ✓ Pass

Any Text WCAG AAA ✓ Pass

Black Background



Color Contrast Check

Large Text (above 18pt) WCAG AA × Fail

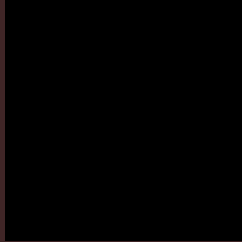
Any Text WCAG AA × Fail

Large Text (above 18pt) WCAG AAA × Fail

Any Text WCAG AAA × Fail

If you want to check with other color combinations, try the [Color Contrast Checker](#).

HunterLab 16.1947, 6.6397, 3.0681 Background



This preview shows how black text looks on a background with the HunterLab color 16.1947, 6.6397, 3.0681.

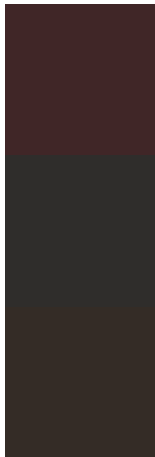


This preview shows how white text looks on a background with the HunterLab color 16.1947, 6.6397,

Color Blindness Simulation

Color vision deficiency is a very complex topic, and I could not describe the different causes any better than Wikipedia does, so if you want to learn more, you should check out their [article about color blindness](#).

Dichromacy



Original Color

16.1947, 6.6397, 3.0681

Protanopia

16.2958, -0.6215, 1.7150

Deuteranopia

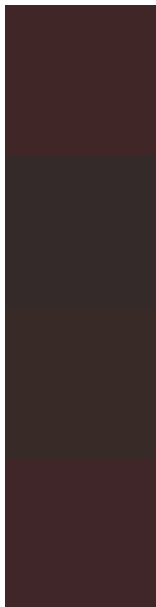
16.3443, 0.5211, 3.4285



Tritanopia

16.2367, 6.8500, 2.4645

Trichromacy



Original Color

16.1947, 6.6397, 3.0681

Protanomaly

16.0623, 2.0524, 1.8478

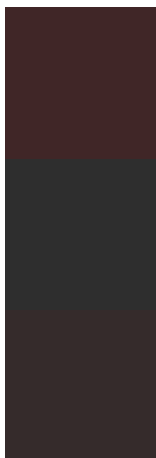
Deuteranomaly

16.2377, 2.4600, 3.3530

Tritanomaly

16.2155, 6.7436, 2.7698

Monochromacy



Original Color

16.1947, 6.6397, 3.0681

Achromatopsia

16.5290, -0.8819, 0.8981

Achromatomaly

16.3066, 1.7646, 1.7690

CSS Examples

Text

The CSS property to change the color of the text to HunterLab 16.1947, 6.6397, 3.0681 is called "color". The color property can be set on classes, ids or directly on the HTML element.

This example shows how text in the color `rgb(64, 38, 39)` looks like.

```
.text, #text, p{  
    color:rgb(64, 38, 39)  
}
```

If you want to add a text shadow in that color use the text-shadow property, you can generate a text shadow directly with our [CSS Text Shadow Generator](#).

Here you see how black text with a 4 pixel rgb(64, 38, 39) colored shadow looks like.

```
.shadow{ text-shadow: 4px 4px 2px rgb(64, 38, 39) }
```

Border

The CSS property to change the border of an element to HunterLab 16.1947, 6.6397, 3.0681 is called "border". The border property can be set on classes, ids or directly on the HTML element.

This example shows the color as border, it can be applied via the CSS property "border" or "border-color".

```
.border, #border, table{ border:4px solid rgb(64, 38, 39) }
```


If only the border color should be changed use the property `border-color`.

```
.border{ border-color:rgb(64, 38, 39) }
```

If you want to add a box shadow in that color use:

Here you see how a box with a 4 pixel `rgb(64, 38, 39)` colored shadow looks like.

```
.boxshadow{ -moz-box-shadow:4px 4px 4px  
4px rgb(64, 38, 39); -webkit-box-  
shadow:4px 4px 4px 4px rgb(64, 38, 39);  
box-shadow:4px 4px 4px 4px rgb(64, 38, 39)  
}
```

Background

The CSS property to change the background color of an element to HunterLab 16.1947, 6.6397, 3.0681 is called "background". The background property can be set on classes, ids or directly on the HTML element.

```
.background, #background, body{  
background: rgb(64, 38, 39) }
```

If only the background color should be changed can be used:

```
.background{ background-color: rgb(64, 38,  
39) }
```

This example shows the color as background, it is applied via the CSS property "background".

To optimize and compress your CSS code, you can use our [online CSS compressor and optimizer](#) based on csstidy. If you want to create a linear or radial gradient as background or border, check our [CSS Gradient Generator](#).

Hey! You found this booklet interesting? Support Converting Colors with the new Membership Option!

The pro membership hides all ads, plus gives you double the colors in the color bucket, and more awesome pro features!

[Learn more, Memberships starting at \\$2.50/m!](#)

**Follow me
on Twitter!**

@ConvertingColor