

Converting Colors

HunterLab(16.2308, 7.5471,
3.6940)

Have a look what the booklet for
HunterLab(16.2308, 7.5471, 3.6940)
contains.

HunterLab(16.1708, 7.4904, 3.6782)	3
<i>Conversions</i>	4
<i>Details</i>	6
<i>Harmonies</i>	12
<i>Previews</i>	24
<i>Color Blindness Simulation</i>	28
<i>CSS Examples</i>	31

Color

**HunterLab(16.1708, 7.4904,
3.6782)**

Conversions

Conversions Part 1

Format	Color
Hex	422525
RGB	66, 37, 37
RGB Percent	26%, 15%, 15%
CMY	0.7412, 0.8549, 0.8549
CMYK	0.00, 0.44, 0.44, 0.74
HSL	0°, 28%, 20%
HSV	0°, 44%, 26%
XYZ	3.2422, 2.6149, 2.0841
YIQ	45.6710, 17.2840, 6.1480

Conversions

Conversions Part 2

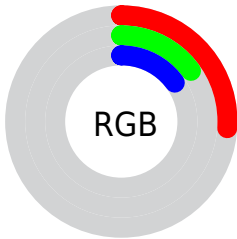
Format	Color
R_{YB}	66, 37, 37
Decimal	4334885
CIE Lab	18.43, 13.75, 5.86
CIE LCh	18, 14.947, 23.099
Yxy	2.6151, 0.4083, 0.3293
Android (android.graphics.Color)	4282524965 (0xFF422525)
YUV	45.6710, -4.2748, 17.8285
Hunter-Lab	16.1708, 7.4904, 3.6782

Details

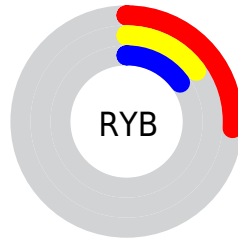
The HunterLab color **16.1708, 7.4904, 3.6782** is a dark color, and the websafe version is hex **663333**. A complement of this color would be **21.6400, -7.3960, -0.9168**, and the grayscale version is **16.4303, -0.8767, 0.8927**.

A 20% lighter version of the original color is **32.0759, 8.4789, 5.1581**, and **3.4521, 5.9118, 2.2307** is the 20% darker color. If you saturate the color by 10%, you get **14.8428, 9.6314, 4.3005**, and if you desaturate by 10%, it is **17.6321, 5.3842, 3.0783**.

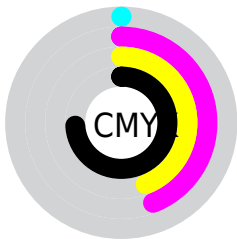
Distribution



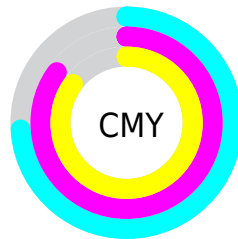
- Red (26%)
- Green (15%)
- Blue (15%)



- Red (26%)
- Yellow (15%)
- Blue (15%)



- Cyan (0%)
- Magenta (44%)
- Yellow (44%)
- Black (74%)



- Cyan (74%)
- Magenta (85%)
- Yellow (85%)

Brightness & Saturation Gradients

These gradients show how the HunterLab color 16.1708, 7.4904, 3.6782 changes by changing the brightness by 10 percent. The first figure shows a shift by +10% for each color and the second figure -10%.

Similar to the brightness gradients but the following saturation gradients show a change of the HunterLab color 16.1708, 7.4904, 3.6782 by changing the saturation by 10% instead.

■ 16.1708, 7.4904,
3.6782

■ 16.1708, 7.4904,
3.6782

■ 111.0982, 8.9364,
11.7695

■ 9.6657, 6.7819,
3.0468

■ 32.1429, 8.4432,
5.4015

0.0000, INF, NaN

0.0000, NaN, NaN

■ 41.3960, 8.7447,
6.2660

0.0000, NaN, NaN

■ 51.3980, 8.9531,
7.1418

0.0000, NaN, NaN

0.0000, NaN, NaN

■ 62.0966, 9.0806,
8.0322

0.0000, NaN, NaN

■ 73.4491, 9.1361,
8.9393

0.0000, NaN, NaN

■ 85.4198, 9.1269,

0.0000, NaN, NaN

9.8641

97.9783, 9.0588,
10.8074

16.1708, 7.4904,
3.6782

16.1708, 7.4904,
3.6782

14.8428, 9.6314,
4.3005

17.6321, 5.3842,
3.0783

13.6694, 11.7557,
4.9277

19.2060, 3.3426,
2.5076

12.6751, 13.7736,
5.5322

20.8764, 1.3749,
1.9686

11.8821, 15.5618,
6.0742

22.6299, -0.5188,
1.4604

11.1979, 17.2602,
6.5940

24.4556, -2.3435,
0.9805

■ 10.7626, 18.4292,
6.9545

■ 26.3445, -4.1065,
0.5259

■ 28.2894, -5.8154,
0.0934

■ 30.2844, -7.4778,
-0.3199

■ 32.3246, -9.1007,
-0.7166

Harmonies

Analogous

The Analogous color harmony consists of three colors that are next to each other on the color wheel.



16.1712, 8.2162, -0.0962



16.1708, 7.4904, 3.6782



16.1712, 4.4207, 6.0018

Triad

The Triadic color harmony groups three colors that are evenly spaced from another and form a triangle on the color wheel.



16.1712, 7.4896, 3.6785



16.1712, -6.9732, 4.9353



16.1712, -1.8477, -9.0683

Complementary

The Complementary color scheme is a pair of colors which are on the opposite of each other on the color wheel.



16.1708, 7.4904, 3.6782



21.6400, -7.3960, -0.9168

Split Complementary

Split-complementary colors differ from the complementary color scheme. The scheme consists of three colors, the original color and two neighbors of the complement color.



16.1712, -5.5462, -6.7808



16.1708, 7.4904, 3.6782



16.1712, -8.2979, 1.7993

Square

The Square scheme is like the rectangle color scheme, but the four colors are evenly spaced on the color wheel.



16.1712, 7.4896, 3.6785



16.1712, -3.9892, 6.5835



16.1712, -7.8042, -2.5292



16.1712, 2.5188, -8.1829

Rectangle

The Rectangle color scheme consists of four colors that form a rectangle on the color wheel.



16.1708, 7.4904, 3.6782



16.1712, 1.6175, 6.7536



16.1712, -7.8042, -2.5292



16.1712, -3.2038, -8.6287

Sweetspot

The Sweet Spot groups the original color and five complimentary colors.



16.1712, 7.4896, 3.6785



27.5977, 1.7176, 2.5689



16.9551, 11.2997, -7.3783



13.9215, 1.0155, 1.3458



63.7533, -3.4017, 3.4638



15.6573, -0.8354, 0.8507

Same Dimension

The Same Dimension uses a secret algorithm to generate beautiful new colors.



16.1712, 7.4896, 3.6785



19.3363, 13.0823, 5.7817



19.2442, 1.4441, 6.4910



11.5712, 0.1802, 0.8961



15.9249, 27.2699, 10.2902



39.8893, 68.3098, 25.7755

Inverse Universe

The Inverse Universe completely reimagines the original color for something new.



21.6400, -7.3960, -0.9168



28.1371, -11.2000, -1.7230



17.8837, -1.8308, -6.1001



12.1665, -1.4078, 0.4067



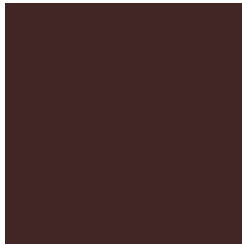
30.6449, -16.2453, -3.2344



76.7614, -40.6923, -8.1022

Previews

White Background



This preview shows how the HunterLab color 16.1708, 7.4904, 3.6782 looks on a white background.

Color Contrast Check

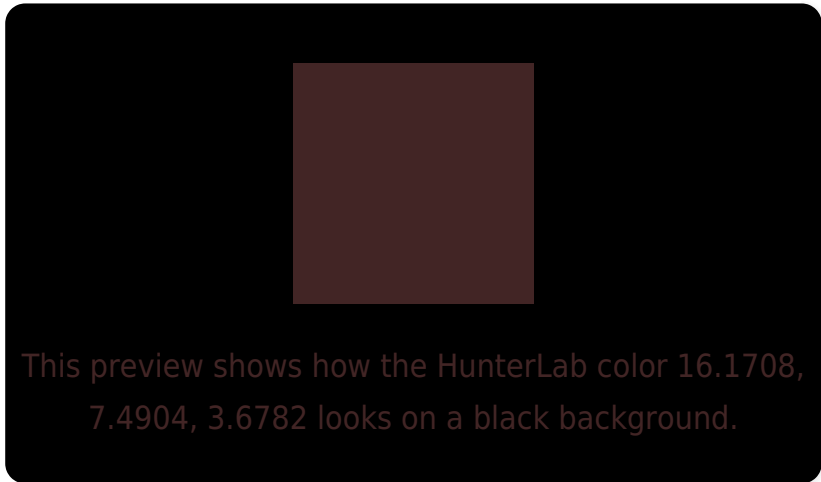
Large Text (above 18pt) WCAG AA ✓ Pass

Any Text WCAG AA ✓ Pass

Large Text (above 18pt) WCAG AAA ✓ Pass

Any Text WCAG AAA ✓ Pass

Black Background



Color Contrast Check

Large Text (above 18pt) WCAG AA × Fail

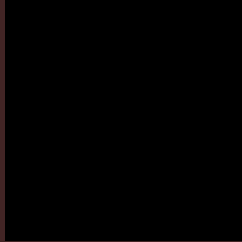
Any Text WCAG AA × Fail

Large Text (above 18pt) WCAG AAA × Fail

Any Text WCAG AAA × Fail

If you want to check with other color combinations, try the [Color Contrast Checker](#).

HunterLab 16.1708, 7.4904, 3.6782 Background



This preview shows how black text looks on a background with the HunterLab color 16.1708, 7.4904, 3.6782.

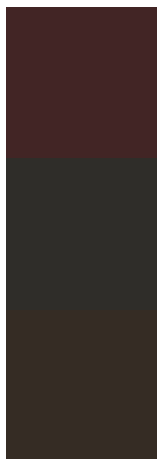


This preview shows how white text looks on a background with the HunterLab color 16.1708, 7.4904,

Color Blindness Simulation

Color vision deficiency is a very complex topic, and I could not describe the different causes any better than Wikipedia does, so if you want to learn more, you should check out their [article about color blindness](#).

Dichromacy



Original Color

16.1708, 7.4904, 3.6782

Protanopia

16.2518, -0.8622, 2.3459

Deuteranopia

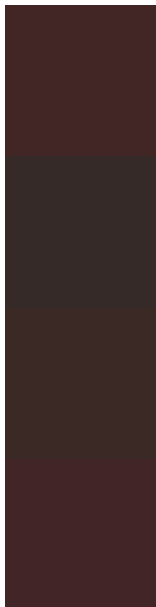
16.3879, 0.5920, 4.0699



Tritanopia

16.2107, 7.6880, 3.1032

Trichromacy



Original Color

16.1708, 7.4904, 3.6782

Protanomaly

16.1040, 2.1031, 2.5691

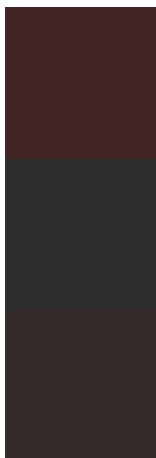
Deuteranomaly

16.1641, 3.2548, 3.8951

Tritanomaly

16.1905, 7.5880, 3.3942

Monochromacy



Original Color

16.1708, 7.4904, 3.6782

Achromatopsia

16.5290, -0.8819, 0.8981

Achromatomaly

16.3066, 1.7646, 1.7690

CSS Examples

Text

The CSS property to change the color of the text to HunterLab 16.1708, 7.4904, 3.6782 is called "color". The color property can be set on classes, ids or directly on the HTML element.

This example shows how text in the color `rgb(66, 37, 37)` looks like.

```
.text, #text, p{  
    color:rgb(66, 37, 37)  
}
```

If you want to add a text shadow in that color use the text-shadow property, you can generate a text shadow directly with our [CSS Text Shadow Generator](#).

Here you see how black text with a 4 pixel rgb(66, 37, 37) colored shadow looks like.

```
.shadow{ text-shadow: 4px 4px 2px rgb(66, 37, 37) }
```

Border

The CSS property to change the border of an element to HunterLab 16.1708, 7.4904, 3.6782 is called "border".

The border property can be set on classes, ids or directly on the HTML element.

This example shows the color as border, it can be applied via the CSS property "border" or "border-color".

```
.border, #border, table{ border:4px solid rgb(66, 37, 37) }
```


If only the border color should be changed use the property `border-color`.

```
.border{ border-color:rgb(66, 37, 37) }
```

If you want to add a box shadow in that color use:

Here you see how a box with a 4 pixel `rgb(66, 37, 37)` colored shadow looks like.

```
.boxshadow{ -moz-box-shadow:4px 4px 4px  
4px rgb(66, 37, 37); -webkit-box-  
shadow:4px 4px 4px 4px rgb(66, 37, 37);  
box-shadow:4px 4px 4px 4px rgb(66, 37, 37)  
}
```

Background

The CSS property to change the background color of an element to HunterLab 16.1708, 7.4904, 3.6782 is called "background". The background property can be set on classes, ids or directly on the HTML element.

```
.background, #background, body{  
background: rgb(66, 37, 37) }
```

If only the background color should be changed can be used:

```
.background{ background-color: rgb(66, 37,  
37) }
```

This example shows the color as background, it is applied via the CSS property "background".

To optimize and compress your CSS code, you can use our [online CSS compressor and optimizer](#) based on csstidy. If you want to create a linear or radial gradient as background or border, check our [CSS Gradient Generator](#).

Hey! You found this booklet interesting? Support Converting Colors with the new Membership Option!

The pro membership hides all ads, plus gives you double the colors in the color bucket, and more awesome pro features!

[Learn more, Memberships starting at \\$2.50/m!](#)

**Follow me
on Twitter!**

@ConvertingColor