

# Converting Colors

HunterLab(16.2697, 6.7658,  
3.5962)

Have a look what the booklet for  
HunterLab(16.2697, 6.7658, 3.5962)  
contains.

<b>HunterLab(16.2788, 6.8523, 3.4721)</b> .....	3
<i><b>Conversions</b></i> .....	4
<i><b>Details</b></i> .....	6
<i><b>Harmonies</b></i> .....	12
<i><b>Previews</b></i> .....	24
<i><b>Color Blindness Simulation</b></i> .....	28
<i><b>CSS Examples</b></i> .....	31

# Color

**HunterLab(16.2788, 6.8523,  
3.4721)**

# Conversions

## Conversions Part 1

<b>Format</b>	<b>Color</b>
Hex	412626
RGB	65, 38, 38
RGB Percent	25%, 15%, 15%
CMY	0.7451, 0.8510, 0.8510
CMYK	0.00, 0.42, 0.42, 0.75
HSL	0°, 26%, 20%
HSV	0°, 42%, 25%
XYZ	3.2229, 2.6500, 2.1754
YIQ	46.0730, 16.0920, 5.7240

# Conversions

## Conversions Part 2

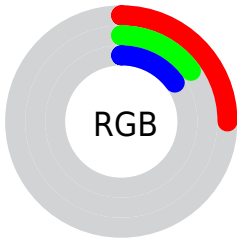
<b>Format</b>	<b>Color</b>
<b>R<sub>YB</sub></b>	65, 38, 38
Decimal	4269606
CIE <sub>Lab</sub>	18.58, 12.77, 5.36
CIE <sub>LCh</sub>	19, 13.845, 22.769
Yxy	2.6501, 0.4004, 0.3293
Android (android.graphics.Color)	4282459686 (0xFF412626)
YUV	46.0730, -3.9800, 16.5990
Hunter-Lab	16.2788, 6.8523, 3.4721

# Details

The HunterLab color **16.2788, 6.8523, 3.4721** is a dark color, and the websafe version is hex **333333**. A complement of this color would be **21.3873, -7.0172, -0.8080**, and the grayscale version is **16.5625, -0.8837, 0.8999**.

A 20% lighter version of the original color is **32.2311, 7.8047, 4.9433**, and **3.3190, 5.6839, 2.1447** is the 20% darker color. If you saturate the color by 10%, you get **14.9393, 8.9504, 4.0791**, and if you desaturate by 10%, it is **17.7438, 4.7971, 2.8895**.

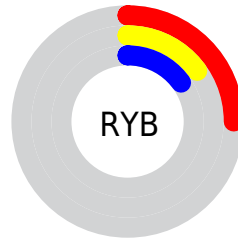
# Distribution



Red (25%)

Green (15%)

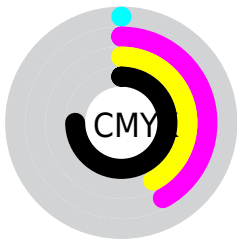
Blue (15%)



Red (25%)

Yellow (15%)

Blue (15%)

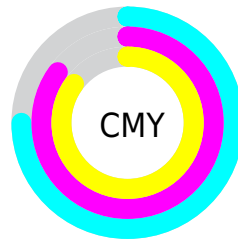


Cyan (0%)

Magenta (42%)

Yellow (42%)

Black (75%)



Cyan (75%)

Magenta (85%)

Yellow (85%)

# Brightness & Saturation Gradients

These gradients show how the HunterLab color 16.2788, 6.8523, 3.4721 changes by changing the brightness by 10 percent. The first figure shows a shift by +10% for each color and the second figure -10%.

Similar to the brightness gradients but the following saturation gradients show a change of the HunterLab color 16.2788, 6.8523, 3.4721 by changing the saturation by 10% instead.



■ 16.2788, 6.8523,  
3.4721

■ 16.2788, 6.8523,  
3.4721

■ 111.3034, 7.8459,  
11.3030

■ 9.7567, 6.2113,  
2.8181

■ 32.2787, 7.6831,  
5.1176

0.0000, INF, NaN

0.0000, NaN, NaN

■ 41.5436, 7.9295,  
5.9498

0.0000, NaN, NaN

■ 51.5567, 8.0862,  
6.7961

0.0000, NaN, NaN

0.0000, NaN, NaN

■ 62.2656, 8.1647,  
7.6593

0.0000, NaN, NaN

■ 73.6279, 8.1737,  
8.5410

0.0000, NaN, NaN

■ 85.6078, 8.1200,

0.0000, NaN, NaN

9.4418

98.1751, 8.0093,  
10.3624

16.2788, 6.8523,  
3.4721

16.2788, 6.8523,  
3.4721

14.9393, 8.9504,  
4.0791

17.7438, 4.7971,  
2.8895

13.7455, 11.0485,  
4.6961

19.3148, 2.8090,  
2.3366

12.7211, 13.0683,  
5.2991

20.9769, 0.8940,  
1.8146

11.8886, 14.8969,  
5.8518

22.7175, -0.9494,  
1.3224

11.2042, 16.5546,  
6.3580

24.5266, -2.7267,  
0.8572

■ 10.6014, 18.1533,  
6.8503

■ 26.3958, -4.4453,  
0.4160

■ 28.3185, -6.1128,  
-0.0042

■ 30.2890, -7.7364,  
-0.4062

■ 32.3027, -9.3227,  
-0.7926

# Harmonies

## Analogous

The Analogous color harmony consists of three colors that are next to each other on the color wheel.



16.2792, 7.4900, -0.0625



16.2788, 6.8523, 3.4721



16.2792, 4.0531, 5.7037

# Triad

The Triadic color harmony groups three colors that are evenly spaced from another and form a triangle on the color wheel.



16.2792, 6.8515, 3.4724



16.2792, -6.5549, 4.7222



16.2792, -1.8268, -8.1777

# Complementary

The Complementary color scheme is a pair of colors which are on the opposite of each other on the color wheel.



16.2788, 6.8523, 3.4721



21.3873, -7.0172, -0.8080

# Split Complementary

Split-complementary colors differ from the complementary color scheme. The scheme consists of three colors, the original color and two neighbors of the complement color.



16.2792, -5.2688, -6.0866



16.2788, 6.8523, 3.4721



16.2792, -7.8221, 1.7809

# Square

The Square scheme is like the rectangle color scheme, but the four colors are evenly spaced on the color wheel.



16.2792, 6.8515, 3.4724



16.2792, -3.7421, 6.2942



16.2792, -7.3751, -2.2094



16.2792, 2.2172, -7.4124



# Rectangle

The Rectangle color scheme consists of four colors that form a rectangle on the color wheel.



16.2788, 6.8523, 3.4721



16.2792, 1.4734, 6.4422



16.2792, -7.3751, -2.2094



16.2792, -3.0870, -7.7713

# Sweetspot

The Sweet Spot groups the original color and five complimentary colors.



16.2792, 6.8515, 3.4724



27.0027, 1.3961, 2.4181



17.0051, 10.4150, -6.7758



14.1324, 0.7784, 1.2816



63.7533, -3.4017, 3.4638



15.6573, -0.8354, 0.8507



# Same Dimension

The Same Dimension uses a secret algorithm to generate beautiful new colors.



16.2792, 6.8515, 3.4724



19.2896, 11.7676, 5.3376



19.1713, 1.2321, 6.1636



11.5712, 0.1802, 0.8961



15.9249, 27.2699, 10.2902



39.8893, 68.3099, 25.7755



# Inverse Universe

The Inverse Universe completely reimagines the original color for something new.



21.3873, -7.0172, -0.8080



27.3859, -10.4742, -1.5339



17.9035, -1.8266, -5.5616



12.1665, -1.4078, 0.4067



30.6450, -16.2454, -3.2343

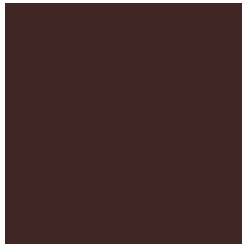


76.7616, -40.6925, -8.1020



# Previews

## White Background



This preview shows how the HunterLab color 16.2788, 6.8523, 3.4721 looks on a white background.

## Color Contrast Check

Large Text (above 18pt) WCAG AA ✓ Pass

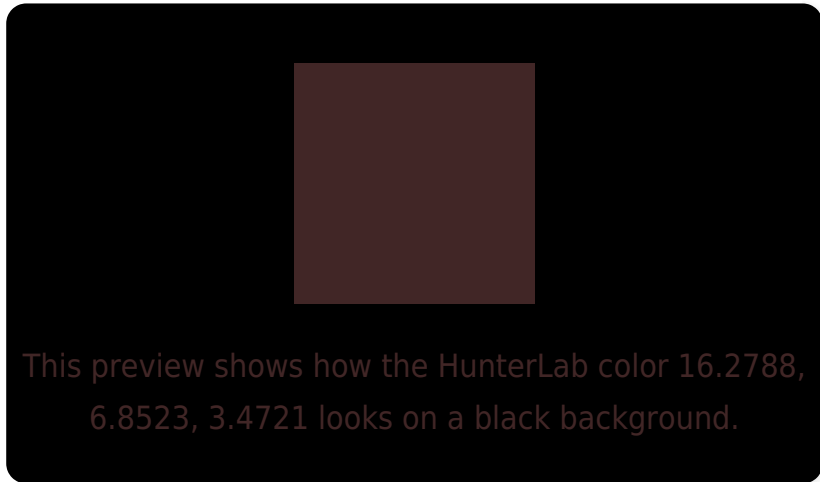
Any Text WCAG AA ✓ Pass

Large Text (above 18pt) WCAG AAA ✓ Pass

Any Text WCAG AAA ✓ Pass



# Black Background



## Color Contrast Check

Large Text (above 18pt) WCAG AA × Fail

Any Text WCAG AA × Fail

Large Text (above 18pt) WCAG AAA × Fail

Any Text WCAG AAA × Fail

If you want to check with other color combinations, try the [Color Contrast Checker](#).

## HunterLab 16.2788, 6.8523, 3.4721 Background



This preview shows how black text looks on a background with the HunterLab color 16.2788, 6.8523, 3.4721.



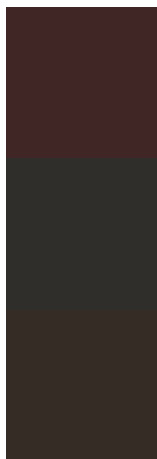
This preview shows how white text looks on a background with the HunterLab color 16.2788, 6.8523,



# Color Blindness Simulation

Color vision deficiency is a very complex topic, and I could not describe the different causes any better than Wikipedia does, so if you want to learn more, you should check out their [article about color blindness](#).

## Dichromacy



### Original Color

16.2788, 6.8523, 3.4721

### Protanopia

16.5091, -1.1337, 2.2861

### Deuteranopia

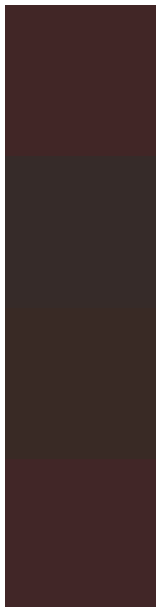
16.4068, 0.6938, 3.7969



## Tritanopia

16.3195, 7.0556, 2.8861

# Trichromacy



## Original Color

16.2788, 6.8523, 3.4721

## Protanomaly

16.3466, 1.8095, 2.4955

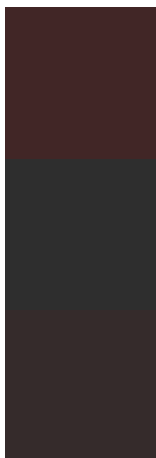
## Deuteranomaly

16.3075, 2.6491, 3.7315

## Tritanomaly

16.2989, 6.9527, 3.1826

# Monochromacy



## Original Color

16.2788, 6.8523, 3.4721

## Achromatopsia

16.5290, -0.8819, 0.8981

## Achromatomaly

16.3066, 1.7646, 1.7690

# CSS Examples

## Text

The CSS property to change the color of the text to HunterLab 16.2788, 6.8523, 3.4721 is called "color". The color property can be set on classes, ids or directly on the HTML element.

This example shows how text in the color `rgb(65, 38, 38)` looks like.

```
.text, #text, p{  
    color:rgb(65, 38, 38)  
}
```

If you want to add a text shadow in that color use the text-shadow property, you can generate a text shadow directly with our [CSS Text Shadow Generator](#).

Here you see how black text with a 4 pixel rgb(65, 38, 38) colored shadow looks like.

```
.shadow{ text-shadow: 4px 4px 2px rgb(65, 38, 38) }
```

## Border

The CSS property to change the border of an element to HunterLab 16.2788, 6.8523, 3.4721 is called "border".

The border property can be set on classes, ids or directly on the HTML element.

This example shows the color as border, it can be applied via the CSS property "border" or "border-color".

```
.border, #border, table{ border:4px solid rgb(65, 38, 38) }
```



If only the border color should be changed use the property `border-color`.

```
.border{ border-color:rgb(65, 38, 38) }
```

If you want to add a box shadow in that color use:

Here you see how a box with a 4 pixel `rgb(65, 38, 38)` colored shadow looks like.

```
.boxshadow{ -moz-box-shadow:4px 4px 4px  
4px rgb(65, 38, 38); -webkit-box-  
shadow:4px 4px 4px 4px rgb(65, 38, 38);  
box-shadow:4px 4px 4px 4px rgb(65, 38, 38)  
}
```

# Background

The CSS property to change the background color of an element to HunterLab 16.2788, 6.8523, 3.4721 is called "background". The background property can be set on classes, ids or directly on the HTML element.

```
.background, #background, body{  
background: rgb(65, 38, 38) }
```

If only the background color should be changed can be used:

```
.background{ background-color: rgb(65, 38,  
38) }
```

This example shows the color as background, it is applied via the CSS property "background".

To optimize and compress your CSS code, you can use our [online CSS compressor and optimizer](#) based on csstidy. If you want to create a linear or radial gradient as background or border, check our [CSS Gradient Generator](#).

Hey! You found this booklet interesting? Support Converting Colors with the new Membership Option!

The pro membership hides all ads, plus gives you double the colors in the color bucket, and more awesome pro features!

**[Learn more, Memberships starting at \\$2.50/m!](#)**

**Follow me  
on Twitter!**

@ConvertingColor