

Converting Colors

HunterLab(16.3006, 6.8642,
1.9197)

Have a look what the booklet for
HunterLab(16.3006, 6.8642, 1.9197)
contains.

HunterLab(16.2808, 7.0701, 1.8328)	3
<i>Conversions</i>	4
<i>Details</i>	6
<i>Harmonies</i>	12
<i>Previews</i>	24
<i>Color Blindness Simulation</i>	28
<i>CSS Examples</i>	31

Color

**HunterLab(16.2808, 7.0701,
1.8328)**

Conversions

Conversions Part 1

Format	Color
Hex	40262B
RGB	64, 38, 43
RGB Percent	25%, 15%, 17%
CMY	0.7490, 0.8510, 0.8314
CMYK	0.00, 0.41, 0.33, 0.75
HSL	348°, 25%, 20%
HSV	348°, 41%, 25%
XYZ	3.2435, 2.6506, 2.6262
YIQ	46.3440, 13.8910, 7.0670

Conversions

Conversions Part 2

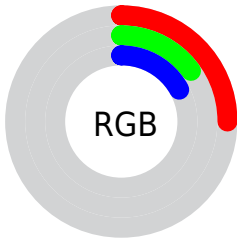
Format	Color
R_{YB}	64, 38, 43
Decimal	4204075
CIE Lab	18.59, 13.10, 1.85
CIE LCh	19, 13.228, 8.028
Yxy	2.6508, 0.3807, 0.3111
Android (android.graphics.Color)	4282394155 (0xFF40262B)
YUV	46.3440, -1.6486, 15.4843
Hunter-Lab	16.2808, 7.0701, 1.8328

Details

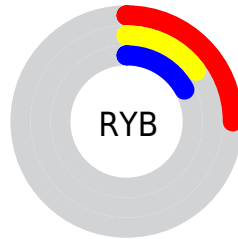
The HunterLab color **16.2808, 7.0701, 1.8328** is a dark color, and the websafe version is hex **333333**. A complement of this color would be **20.9636, -7.5464, 1.0825**, and the grayscale version is **16.6452, -0.8881, 0.9044**.

A 20% lighter version of the original color is **32.2518, 8.1187, 3.0430**, and **3.4521, 5.9118, 2.2307** is the 20% darker color. If you saturate the color by 10%, you get **14.9685, 9.1910, 2.1777**, and if you desaturate by 10%, it is **17.7095, 4.9625, 1.5759**.

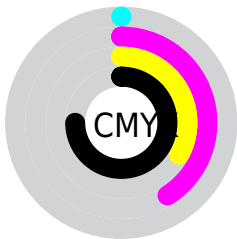
Distribution



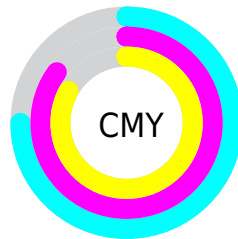
- Red (25%)
- Green (15%)
- Blue (17%)



- Red (25%)
- Yellow (15%)
- Blue (17%)



- Cyan (0%)
- Magenta (41%)
- Yellow (33%)
- Black (75%)



- Cyan (75%)
- Magenta (85%)
- Yellow (83%)

Brightness & Saturation Gradients

These gradients show how the HunterLab color 16.2808, 7.0701, 1.8328 changes by changing the brightness by 10 percent. The first figure shows a shift by +10% for each color and the second figure -10%.

Similar to the brightness gradients but the following saturation gradients show a change of the HunterLab color 16.2808, 7.0701, 1.8328 by changing the saturation by 10% instead.

■ 16.2808, 7.0701,
1.8328

■ 16.2808, 7.0701,
1.8328

■ 111.3072, 8.2127,
7.8968

■ 9.7584, 6.4072,
1.3265

■ 32.2812, 7.9409,
2.9604

0.0000, INF, NaN

0.0000, NaN, NaN

■ 41.5463, 8.2054,
3.5743

0.0000, NaN, NaN

■ 51.5596, 8.3792,
4.2205

0.0000, NaN, NaN

0.0000, NaN, NaN

■ 62.2687, 8.4738,
4.8978

0.0000, NaN, NaN

■ 73.6311, 8.4981,
5.6051

0.0000, NaN, NaN

■ 85.6112, 8.4592,

0.0000, NaN, NaN

6.3413

98.1787, 8.3625,
7.1055

16.2808, 7.0701,
1.8328

16.2808, 7.0701,
1.8328

14.9685, 9.1910,
2.1777

17.7095, 4.9625,
1.5759

13.7907, 11.2812,
2.6157

19.2369, 2.8951,
1.3967

12.7691, 13.2655,
3.1462

20.8494, 0.8777,
1.2852

11.9246, 15.0382,
3.7556

22.5357, -1.0876,
1.2318

11.2305, 16.6156,
4.3782

24.2866, -3.0030,
1.2280

■ 10.5702, 18.3600,
4.8285

■ 26.0943, -4.8730,
1.2665

■ 27.9527, -6.7031,
1.3411

■ 29.8566, -8.4986,
1.4466

■ 31.8017, -10.2647,
1.5790

Harmonies

Analogous

The Analogous color harmony consists of three colors that are next to each other on the color wheel.



16.2812, 6.5254, -1.9539



16.2808, 7.0701, 1.8328



16.2812, 5.3363, 4.6331

Triad

The Triadic color harmony groups three colors that are evenly spaced from another and form a triangle on the color wheel.



16.2812, 7.0694, 1.8331



16.2812, -5.1561, 5.4891



16.2812, -3.5303, -7.0259

Complementary

The Complementary color scheme is a pair of colors which are on the opposite of each other on the color wheel.



16.2808, 7.0701, 1.8328



20.9636, -7.5464, 1.0825

Split Complementary

Split-complementary colors differ from the complementary color scheme. The scheme consists of three colors, the original color and two neighbors of the complement color.



16.2812, -6.2660, -4.0383



16.2808, 7.0701, 1.8328



16.2812, -7.1425, 3.2920

Square

The Square scheme is like the rectangle color scheme, but the four colors are evenly spaced on the color wheel.



16.2812, 7.0694, 1.8331



16.2812, -1.8838, 6.4022



16.2812, -7.5292, -0.1212



16.2812, 0.1700, -7.6722

Rectangle

The Rectangle color scheme consists of four colors that form a rectangle on the color wheel.



16.2808, 7.0701, 1.8328



16.2812, 3.2094, 5.7731



16.2812, -7.5292, -0.1212



16.2812, -4.5828, -6.2337

Sweetspot

The Sweet Spot groups the original color and five complimentary colors.



16.2812, 7.0694, 1.8331



27.0517, 1.6605, 1.7150



16.3715, 8.5343, -7.3290



14.1588, 0.9209, 0.9025



63.7533, -3.4017, 3.4638



15.6573, -0.8354, 0.8507

Same Dimension

The Same Dimension uses a secret algorithm to generate beautiful new colors.



16.2812, 7.0694, 1.8331



19.6242, 12.2702, 2.8990



17.8002, 3.2809, 4.9174



11.5853, 0.2567, 0.6942



16.0675, 27.8010, 8.1747



40.1083, 69.1241, 22.5259

Inverse Universe

The Inverse Universe completely reimagines the original color for something new.



16.2812, 7.0694, 1.8331



19.6242, 12.2702, 2.8990



19.0529, -3.8430, -3.4212



11.5853, 0.2567, 0.6942



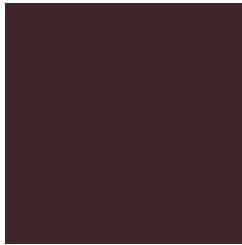
16.0675, 27.8010, 8.1747



40.1083, 69.1241, 22.5259

Previews

White Background



This preview shows how the HunterLab color 16.2808, 7.0701, 1.8328 looks on a white background.

Color Contrast Check

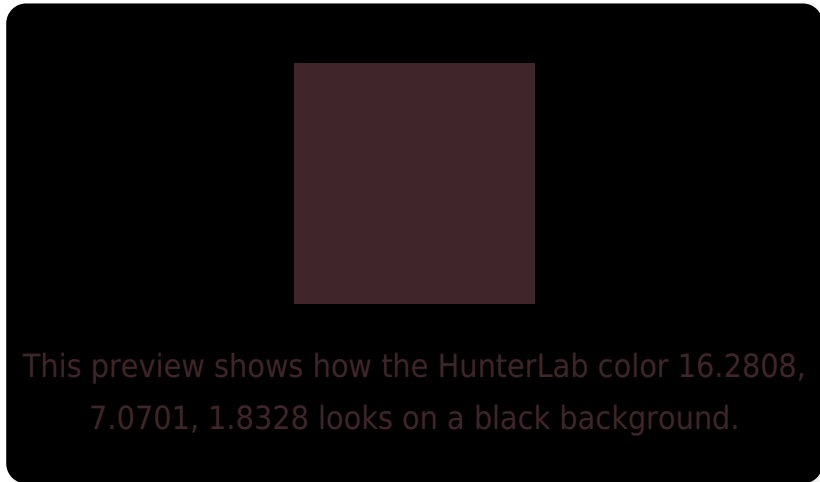
Large Text (above 18pt) WCAG AA ✓ Pass

Any Text WCAG AA ✓ Pass

Large Text (above 18pt) WCAG AAA ✓ Pass

Any Text WCAG AAA ✓ Pass

Black Background



Color Contrast Check

Large Text (above 18pt) WCAG AA × Fail

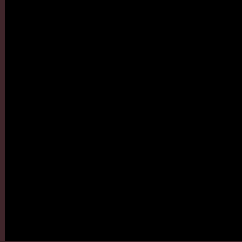
Any Text WCAG AA × Fail

Large Text (above 18pt) WCAG AAA × Fail

Any Text WCAG AAA × Fail

If you want to check with other color combinations, try the [Color Contrast Checker](#).

HunterLab 16.2808, 7.0701, 1.8328 Background



This preview shows how black text looks on a background with the HunterLab color 16.2808, 7.0701, 1.8328.



This preview shows how white text looks on a background with the HunterLab color 16.2808, 7.0701,

Color Blindness Simulation

Color vision deficiency is a very complex topic, and I could not describe the different causes any better than Wikipedia does, so if you want to learn more, you should check out their [article about color blindness](#).

Dichromacy



Original Color

16.2808, 7.0701, 1.8328

Protanopia

16.3182, -0.3549, 0.2777

Deuteranopia

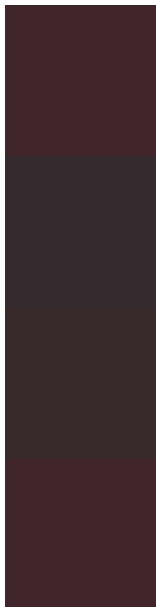
16.3473, 0.6977, 2.1407



Tritanopia

16.2367, 6.8500, 2.4645

Trichromacy



Original Color

16.2808, 7.0701, 1.8328

Protanomaly

16.1557, 2.5458, 0.5138

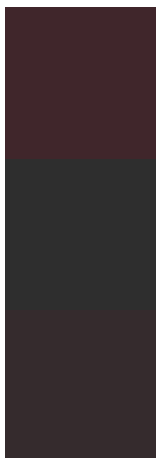
Deuteranomaly

16.3213, 2.8999, 2.1505

Tritanomaly

16.2585, 6.9588, 2.1521

Monochromacy



Original Color

16.2808, 7.0701, 1.8328

Achromatopsia

16.5290, -0.8819, 0.8981

Achromatomaly

16.3527, 2.0092, 1.1104

CSS Examples

Text

The CSS property to change the color of the text to HunterLab 16.2808, 7.0701, 1.8328 is called "color". The color property can be set on classes, ids or directly on the HTML element.

This example shows how text in the color `rgb(64, 38, 43)` looks like.

```
.text, #text, p{  
    color:rgb(64, 38, 43)  
}
```

If you want to add a text shadow in that color use the text-shadow property, you can generate a text shadow directly with our [CSS Text Shadow Generator](#).

Here you see how black text with a 4 pixel rgb(64, 38, 43) colored shadow looks like.

```
.shadow{ text-shadow: 4px 4px 2px rgb(64, 38, 43) }
```

Border

The CSS property to change the border of an element to HunterLab 16.2808, 7.0701, 1.8328 is called "border".

The border property can be set on classes, ids or directly on the HTML element.

This example shows the color as border, it can be applied via the CSS property "border" or "border-color".

```
.border, #border, table{ border:4px solid rgb(64, 38, 43) }
```


If only the border color should be changed use the property `border-color`.

```
.border{ border-color:rgb(64, 38, 43) }
```

If you want to add a box shadow in that color use:

Here you see how a box with a 4 pixel `rgb(64, 38, 43)` colored shadow looks like.

```
.boxshadow{ -moz-box-shadow:4px 4px 4px  
4px rgb(64, 38, 43); -webkit-box-  
shadow:4px 4px 4px 4px rgb(64, 38, 43);  
box-shadow:4px 4px 4px 4px rgb(64, 38, 43)  
}
```

Background

The CSS property to change the background color of an element to HunterLab 16.2808, 7.0701, 1.8328 is called "background". The background property can be set on classes, ids or directly on the HTML element.

```
.background, #background, body{  
background: rgb(64, 38, 43) }
```

If only the background color should be changed can be used:

```
.background{ background-color: rgb(64, 38,  
43) }
```

This example shows the color as background, it is applied via the CSS property "background".

To optimize and compress your CSS code, you can use our [online CSS compressor and optimizer](#) based on csstidy. If you want to create a linear or radial gradient as background or border, check our [CSS Gradient Generator](#).

Hey! You found this booklet
interesting? Support Converting
Colors with the new Membership
Option!

The pro membership hides all ads, plus gives you
double the colors in the color bucket, and more
awesome pro features!

[Learn more, Memberships starting at \\$2.50/m!](#)

**Follow me
on Twitter!**

@ConvertingColor