

Converting Colors

HunterLab(16.3660, 6.8631,
5.5085)

Have a look what the booklet for
HunterLab(16.3660, 6.8631, 5.5085)
contains.

HunterLab(16.3660, 6.8631, 5.5085)	3
<i>Conversions</i>	4
<i>Details</i>	6
<i>Harmonies</i>	12
<i>Previews</i>	24
<i>Color Blindness Simulation</i>	28
<i>CSS Examples</i>	31

Color

**HunterLab(16.3660, 6.8631,
5.5085)**

Conversions

Conversions Part 1

Format	Color
Hex	43261F
RGB	67, 38, 31
RGB Percent	26%, 15%, 12%
CMY	0.7373, 0.8510, 0.8784
CMYK	0.00, 0.43, 0.54, 0.74
HSL	12°, 37%, 19%
HSV	12°, 54%, 26%
XYZ	3.2552, 2.6785, 1.6418
YIQ	45.8730, 19.5310, 3.9710

Conversions

Conversions Part 2

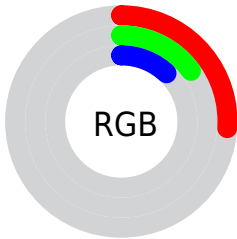
Format	Color
RYB	67, 40, 31
Decimal	4400671
CIELab	18.71, 12.77, 10.43
CIELCh	19, 16.490, 39.237
Yxy	2.6786, 0.4297, 0.3536
Android (android.graphics.Color)	4282590751 (0xFF43261F)
YUV	45.8730, -7.3324, 18.5284
Hunter-Lab	16.3660, 6.8631, 5.5085

Details

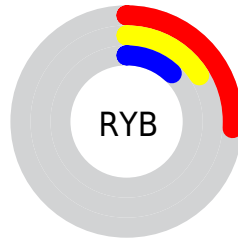
The HunterLab color **16.3660, 6.8631, 5.5085** is a dark color, and the websafe version is hex **663333**. A complement of this color would be **19.8195, -5.9181, -3.7764**, and the grayscale version is **16.5064, -0.8807, 0.8968**.

A 20% lighter version of the original color is **32.3673, 7.8772, 7.8890**, and **3.4521, 5.9118, 2.2307** is the 20% darker color. If you saturate the color by 10%, you get **15.2526, 8.6006, 6.1260**, and if you desaturate by 10%, it is **17.5734, 5.1861, 4.8178**.

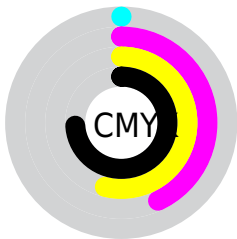
Distribution



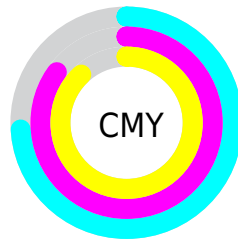
- Red (26%)
- Green (15%)
- Blue (12%)



- Red (26%)
- Yellow (16%)
- Blue (12%)



- Cyan (0%)
- Magenta (43%)
- Yellow (54%)
- Black (74%)



- Cyan (74%)
- Magenta (85%)
- Yellow (88%)

Brightness & Saturation Gradients

These gradients show how the HunterLab color 16.3660, 6.8631, 5.5085 changes by changing the brightness by 10 percent. The first figure shows a shift by +10% for each color and the second figure -10%.

Similar to the brightness gradients but the following saturation gradients show a change of the HunterLab color 16.3660, 6.8631, 5.5085 by changing the saturation by 10% instead.

■ 16.3660, 6.8631,
5.5085

■ 16.3660, 6.8631,
5.5085

■ 111.4688, 7.8501,
16.0405

■ 9.8302, 6.2239,
4.9487

■ 32.3882, 7.6914,
7.9607

0.0000, INF, NaN

0.0000, NaN, NaN

■ 41.6627, 7.9369,
9.1284

0.0000, NaN, NaN

■ 51.6847, 8.0929,
10.2805

0.0000, NaN, NaN

0.0000, NaN, NaN

■ 62.4019, 8.1708,
11.4263

0.0000, NaN, NaN

■ 73.7720, 8.1792,
12.5716

0.0000, NaN, NaN

■ 85.7594, 8.1251,

0.0000, NaN, NaN

13.7207

98.3337, 8.0139,
14.8763

16.3660, 6.8631,
5.5085

16.3660, 6.8631,
5.5085

15.2526, 8.6006,
6.1260

17.5734, 5.1861,
4.8178

14.2447, 10.3766,
6.6480

18.8621, 3.5840,
4.0706

13.3561, 12.1486,
7.0506

20.2226, 2.0596,
3.2805

12.5916, 13.8197,
7.4328

21.6464, 0.6108,
2.4575

12.1735, 14.7538,
7.7595

23.1263, -0.7671,
1.6091

■ 24.6562, -2.0800,
0.7405

■ 26.2310, -3.3346,
-0.1445

■ 27.8462, -4.5373,
-1.0431

■ 29.4983, -5.6940,
-1.9534

Harmonies

Analogous

The Analogous color harmony consists of three colors that are next to each other on the color wheel.



16.3664, 9.2107, 2.2318



16.3660, 6.8631, 5.5085



16.3664, 2.5098, 7.1345

Triad

The Triadic color harmony groups three colors that are evenly spaced from another and form a triangle on the color wheel.



16.3664, 6.8622, 5.5088



16.3664, -8.6054, 3.6947



16.3664, 0.6260, -10.2882

Complementary

The Complementary color scheme is a pair of colors which are on the opposite of each other on the color wheel.



16.3660, 6.8631, 5.5085



19.8195, -5.9181, -3.7764

Split Complementary

Split-complementary colors differ from the complementary color scheme. The scheme consists of three colors, the original color and two neighbors of the complement color.



16.3664, -4.0037, -9.5619



16.3660, 6.8631, 5.5085



16.3664, -8.9869, -0.5741

Square

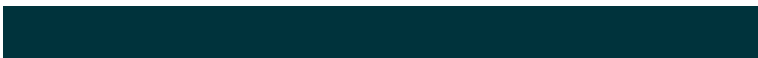
The Square scheme is like the rectangle color scheme, but the four colors are evenly spaced on the color wheel.



16.3664, 6.8622, 5.5088



16.3664, -6.2866, 6.3150



16.3664, -7.3961, -5.6531



16.3664, 5.3482, -7.4212

Rectangle

The Rectangle color scheme consists of four colors that form a rectangle on the color wheel.



16.3660, 6.8631, 5.5085



16.3664, -0.7517, 7.4393



16.3664, -7.3961, -5.6531



16.3664, -0.9962, -10.4707

Sweetspot

The Sweet Spot groups the original color and five complimentary colors.



16.3664, 6.8622, 5.5088



27.5579, 1.3333, 3.5072



15.8234, 13.2694, -6.2443



13.9596, 0.7456, 1.8237



63.7533, -3.4017, 3.4638



15.6573, -0.8354, 0.8507

Same Dimension

The Same Dimension uses a secret algorithm to generate beautiful new colors.



16.3664, 6.8622, 5.5088



19.4116, 11.8306, 8.1641



20.2039, -0.3975, 8.6383



11.7121, -0.0620, 1.0536



17.3103, 22.8065, 11.0658



42.0550, 61.1736, 26.9850

Inverse Universe

The Inverse Universe completely reimagines the original color for something new.



19.8195, -5.9181, -3.7764



24.7670, -8.3324, -6.3165



15.4306, 0.9960, -10.8780



12.0193, -1.1711, 0.2336



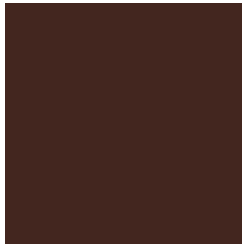
25.1349, -9.3212, -11.2947



61.9292, -21.9547, -30.0122

Previews

White Background



This preview shows how the HunterLab color 16.3660, 6.8631, 5.5085 looks on a white background.

Color Contrast Check

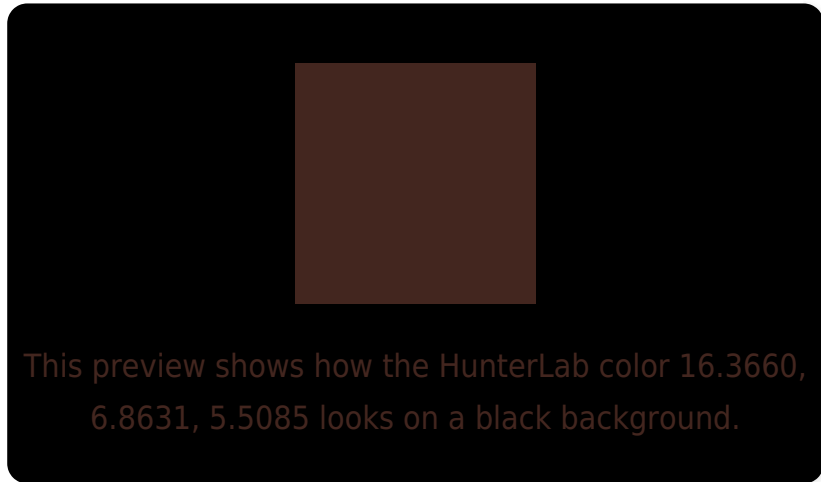
Large Text (above 18pt) WCAG AA ✓ Pass

Any Text WCAG AA ✓ Pass

Large Text (above 18pt) WCAG AAA ✓ Pass

Any Text WCAG AAA ✓ Pass

Black Background



Color Contrast Check

Large Text (above 18pt) WCAG AA × Fail

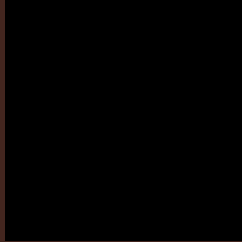
Any Text WCAG AA × Fail

Large Text (above 18pt) WCAG AAA × Fail

Any Text WCAG AAA × Fail

If you want to check with other color combinations, try the [Color Contrast Checker](#).

HunterLab 16.3660, 6.8631, 5.5085 Background



This preview shows how black text looks on a background with the HunterLab color 16.3660, 6.8631, 5.5085.

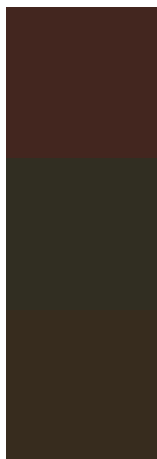


This preview shows how white text looks on a background with the HunterLab color 16.3660, 6.8631,

Color Blindness Simulation

Color vision deficiency is a very complex topic, and I could not describe the different causes any better than Wikipedia does, so if you want to learn more, you should check out their [article about color blindness](#).

Dichromacy



Original Color

16.3660, 6.8631, 5.5085

Protanopia

16.4999, -1.4791, 4.7031

Deuteranopia

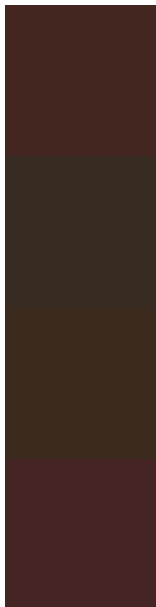
16.4540, 0.6111, 5.7235



Tritanopia

16.4273, 8.3236, 3.3404

Trichromacy



Original Color

16.3660, 6.8631, 5.5085

Protanomaly

16.3656, 1.5650, 4.8991

Deuteranomaly

16.3691, 2.6063, 5.6832

Tritanomaly

16.3690, 8.0366, 4.1817

Monochromacy



Original Color

16.3660, 6.8631, 5.5085

Achromatopsia

16.5290, -0.8819, 0.8981

Achromatomaly

16.3466, 1.8095, 2.4955

CSS Examples

Text

The CSS property to change the color of the text to HunterLab 16.3660, 6.8631, 5.5085 is called "color". The color property can be set on classes, ids or directly on the HTML element.

This example shows how text in the color `rgb(67, 38, 31)` looks like.

```
.text, #text, p{  
    color:rgb(67, 38, 31)  
}
```

If you want to add a text shadow in that color use the text-shadow property, you can generate a text shadow directly with our [CSS Text Shadow Generator](#).

Here you see how black text with a 4 pixel rgb(67, 38, 31) colored shadow looks like.

```
.shadow{ text-shadow: 4px 4px 2px rgb(67, 38, 31) }
```

Border

The CSS property to change the border of an element to HunterLab 16.3660, 6.8631, 5.5085 is called "border". The border property can be set on classes, ids or directly on the HTML element.

This example shows the color as border, it can be applied via the CSS property "border" or "border-color".

```
.border, #border, table{ border:4px solid rgb(67, 38, 31) }
```


If only the border color should be changed use the property `border-color`.

```
.border{ border-color:rgb(67, 38, 31) }
```

If you want to add a box shadow in that color use:

Here you see how a box with a 4 pixel `rgb(67, 38, 31)` colored shadow looks like.

```
.boxshadow{ -moz-box-shadow:4px 4px 4px  
4px rgb(67, 38, 31); -webkit-box-  
shadow:4px 4px 4px 4px rgb(67, 38, 31);  
box-shadow:4px 4px 4px 4px rgb(67, 38, 31)  
}
```

Background

The CSS property to change the background color of an element to HunterLab 16.3660, 6.8631, 5.5085 is called "background". The background property can be set on classes, ids or directly on the HTML element.

```
.background, #background, body{  
background: rgb(67, 38, 31) }
```

If only the background color should be changed can be used:

```
.background{ background-color: rgb(67, 38,  
31) }
```

This example shows the color as background, it is applied via the CSS property "background".

To optimize and compress your CSS code, you can use our [online CSS compressor and optimizer](#) based on csstidy. If you want to create a linear or radial gradient as background or border, check our [CSS Gradient Generator](#).

Hey! You found this booklet interesting? Support Converting Colors with the new Membership Option!

The pro membership hides all ads, plus gives you double the colors in the color bucket, and more awesome pro features!

[Learn more, Memberships starting at \\$2.50/m!](#)

**Follow me
on Twitter!**

@ConvertingColor